



CYPRESS

CY7C344

32-Macrocell MAX® EPLD

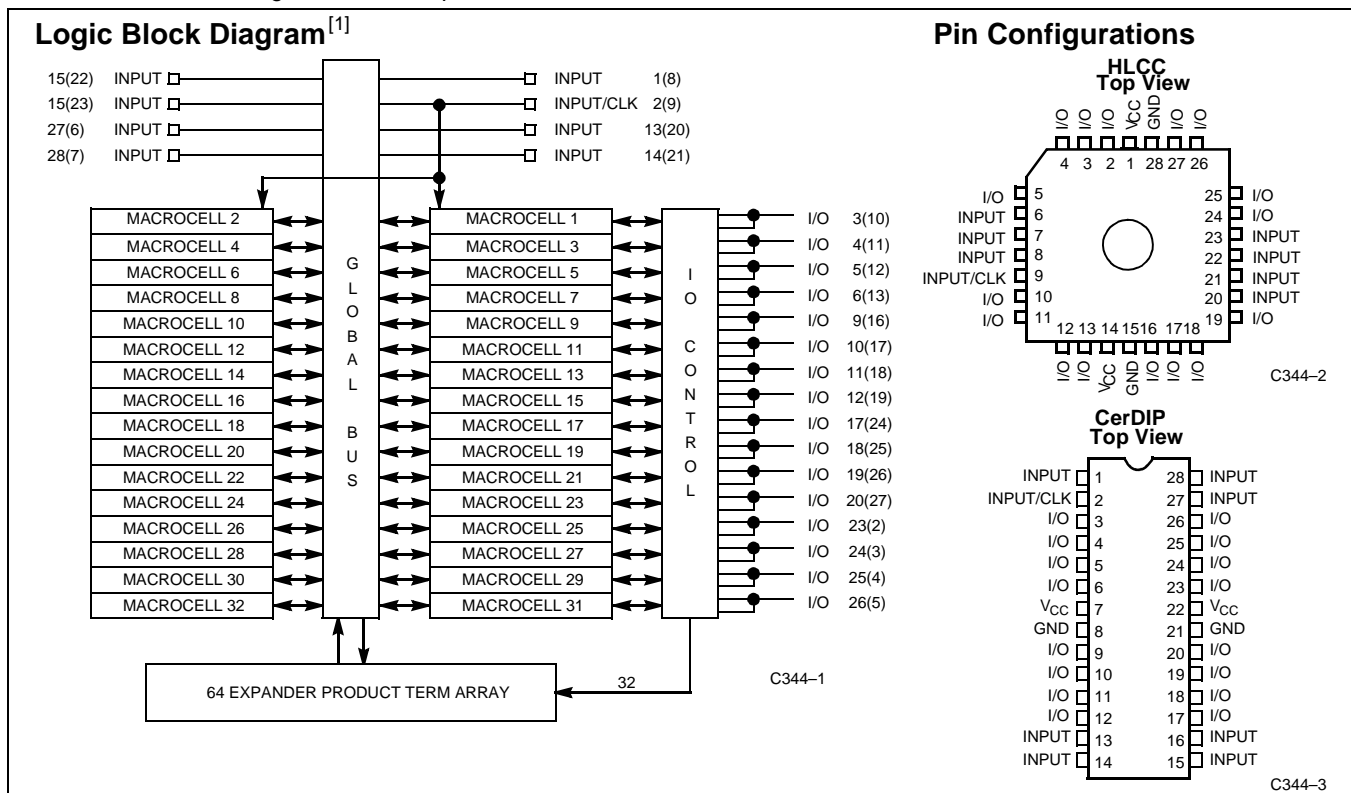
Features

- High-performance, high-density replacement for TTL, 74HC, and custom logic
- 32 macrocells, 64 expander product terms in one LAB
- 8 dedicated inputs, 16 I/O pins
- 0.8-micron double-metal CMOS EPROM technology
- 28-pin, 300-mil DIP, cerDIP or 28-pin HLCC, PLCC package

Functional Description

Available in a 28-pin, 300-mil DIP or windowed J-leaded ceramic chip carrier (HLCC), the CY7C344 represents the densest EPLD of this size. Eight dedicated inputs and 16 bidirectional I/O pins communicate to one logic array block. In the CY7C344 LAB there are 32 macrocells and 64 expander product terms. When an I/O macrocell is used as an input, two expanders are used to create an input path. Even if all of the I/O pins are driven by macrocell registers, there are still 16 "buried" registers available. All inputs, macrocells, and I/O pins are interconnected within the LAB.

The speed and density of the CY7C344 makes it a natural for all types of applications. With just this one device, the designer can implement complex state machines, registered logic, and combinatorial "glue" logic, without using multiple chips. This architectural flexibility allows the CY7C344 to replace multi-chip TTL solutions, whether they are synchronous, asynchronous, combinatorial, or all three.



Selection Guide

| | | 7C344-15 | 7C344-20 | 7C344-25 |
|--------------------------------|------------|----------|----------|----------|
| Maximum Access Time (ns) | | 15 | 20 | 25 |
| Maximum Operating Current (mA) | Commercial | 200 | 200 | 200 |
| | Military | | 220 | 220 |
| | Industrial | 220 | 220 | 220 |
| Maximum Standby Current (mA) | Commercial | 150 | 150 | 150 |
| | Military | | 170 | 170 |
| | Industrial | 170 | 170 | 170 |

Note:

1. Numbers in () refer to J-leaded packages.

Maximum Ratings

(Above which the useful life may be impaired. For user guidelines, not tested.)

| | |
|--|-----------------|
| Storage Temperature | –65°C to +150°C |
| Ambient Temperature with Power Applied..... | 0°C to +70°C |
| Maximum Junction Temperature (Under Bias)..... | 150°C |
| Supply Voltage to Ground Potential..... | –2.0V to +7.0V |
| Maximum Power Dissipation..... | 1500 mW |
| DC V_{CC} or GND Current..... | 500 mA |

Static Discharge Voltage

(per MIL-STD-883, Method 3015) >2001V

DC Output Current, per Pin –25 mA to +25 mA

DC Input Voltage^[2] –3.0V to +7.0V

DC Program Voltage +13.0V

Operating Range

| Range | Ambient Temperature | V_{CC} |
|------------|------------------------|----------|
| Commercial | 0°C to +70°C | 5V ±5% |
| Industrial | –40°C to +85°C | 5V ±10% |
| Military | –55°C to +125°C (Case) | 5V ±10% |

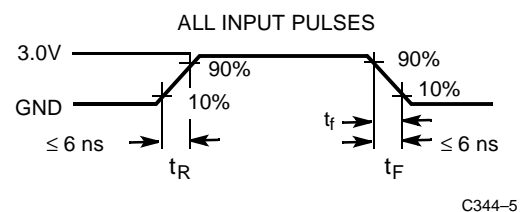
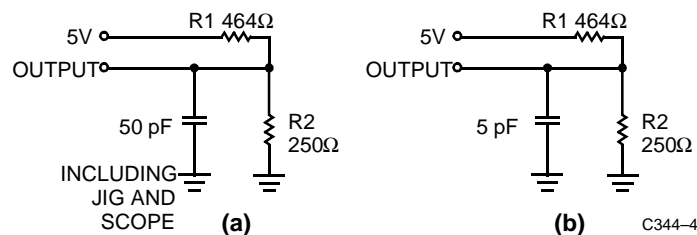
Electrical Characteristics Over the Operating Range^[3]

| Parameter | Description | Test Conditions | Min. | Max. | Unit |
|-----------|--------------------------------|---|---------------------|----------------|------|
| V_{OH} | Output HIGH Voltage | $V_{CC} = \text{Min.}, I_{OH} = -4.0 \text{ mA}$ | 2.4 | | V |
| V_{OL} | Output LOW Voltage | $V_{CC} = \text{Min.}, I_{OL} = 8 \text{ mA}$ | | 0.45 | V |
| V_{IH} | Input HIGH Level | | 2.2 | $V_{CC} + 0.3$ | V |
| V_{IL} | Input LOW Level | | –0.3 | 0.8 | V |
| I_{IX} | Input Current | $GND \leq V_{IN} \leq V_{CC}$ | –10 | +10 | μA |
| I_{OZ} | Output Leakage Current | $V_O = V_{CC}$ or GND | –40 | +40 | μA |
| I_{OS} | Output Short Circuit Current | $V_{CC} = \text{Max.}, V_{OUT} = 0.5V^{[4, 5]}$ | –30 | –90 | mA |
| I_{CC1} | Power Supply Current (Standby) | $V_I = V_{CC}$ or GND (No Load) | Commercial | 150 | mA |
| | | | Military/Industrial | 170 | mA |
| I_{CC2} | Power Supply Current | $V_I = V_{CC}$ or GND (No Load) $f = 1.0 \text{ MHz}^{[4, 6]}$ | Commercial | 200 | mA |
| | | | Military/Industrial | 220 | mA |
| t_R | Recommended Input Rise Time | | | 100 | ns |
| t_F | Recommended Input Fall Time | | | 100 | ns |

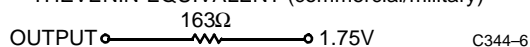
Capacitance

| Parameter | Description | Test Conditions | Max. | Unit |
|-----------|--------------------|---------------------------------------|------|------|
| C_{IN} | Input Capacitance | $V_{IN} = 2V, f = 1.0 \text{ MHz}$ | 10 | pF |
| C_{OUT} | Output Capacitance | $V_{OUT} = 2.0V, f = 1.0 \text{ MHz}$ | 10 | pF |

AC Test Loads and Waveforms^[7]



Equivalent to: THÉVENIN EQUIVALENT (commercial/military)



Notes:

- Minimum DC input is –0.3V. During transitions, the inputs may undershoot to –2.0V for periods less than 20 ns.
- Typical values are for $T_A = 25^\circ\text{C}$ and $V_{CC} = 5V$.
- Guaranteed by design but not 100% tested.
- Not more than one output should be tested at a time. Duration of the short circuit should not be more than one second. $V_{OUT} = 0.5V$ has been chosen to avoid test problems caused by tester ground degradation.
- Measured with device programmed as a 16-bit counter.
- Part (a) in AC Test Load and Waveforms is used for all parameters except t_{ER} and t_{XZ} , which is used for part (b) in AC Test Load and Waveforms. All external timing parameters are measured referenced to external pins of the device.

Timing Delays

Timing delays within the CY7C344 may be easily determined using *Warp™*, *Warp Professional™*, or *Warp Enterprise™* software. The CY7C344 has fixed internal delays, allowing the user to determine the worst case timing delays for any design.

Design Recommendations

Operation of the devices described herein with conditions above those listed under “Maximum Ratings” may cause permanent damage to the device. This is a stress rating only and functional operation of the device at these or any other conditions above those indicated in the operational sections of this data sheet is not implied. Exposure to absolute maximum ratings conditions for extended periods of time may affect device reliability. The CY7C344 contains circuitry to protect device pins from high-static voltages or electric fields; however, normal precautions should be taken to avoid applying any voltage higher than maximum rated voltages.

For proper operation, input and output pins must be constrained to the range $GND \leq (V_{IN} \text{ or } V_{OUT}) \leq V_{CC}$. Unused inputs must always be tied to an appropriate logic level (either V_{CC} or GND). Each set of V_{CC} and GND pins must be connected together directly at the device. Power supply decoupling capacitors of at least 0.2 μF must be connected between V_{CC} and GND . For the most effective decoupling, each V_{CC} pin should be separately decoupled.

Timing Considerations

Unless otherwise stated, propagation delays do not include expanders. When using expanders, add the maximum expander delay t_{EXP} to the overall delay.

When calculating synchronous frequencies, use t_{S1} if all inputs are on the input pins. t_{S2} should be used if data is applied at an I/O pin. If t_{S2} is greater than t_{CO1} , $1/t_{S2}$ becomes the limiting frequency in the data-path mode unless $1/(t_{WH} + t_{WL})$ is less than $1/t_{S2}$.

When expander logic is used in the data path, add the appropriate maximum expander delay, t_{EXP} to t_{S1} . Determine which of $1/(t_{WH} + t_{WL})$, $1/t_{CO1}$, or $1/(t_{EXP} + t_{S1})$ is the lowest frequency. The lowest of these frequencies is the maximum data-path frequency for the synchronous configuration.

When calculating external asynchronous frequencies, use t_{AS1} if all inputs are on dedicated input pins. If any data is applied to an I/O pin, t_{AS2} must be used as the required set-up time. If $(t_{AS2} + t_{AH})$ is greater than t_{ACO1} , $1/(t_{AS2} + t_{AH})$ becomes the limiting frequency in the data-path mode unless $1/(t_{AWH} + t_{AWL})$ is less than $1/(t_{AS2} + t_{AH})$.

When expander logic is used in the data path, add the appropriate maximum expander delay, t_{EXP} to t_{AS1} . Determine which of $1/(t_{AWH} + t_{AWL})$, $1/t_{ACO1}$, or $1/(t_{EXP} + t_{AS1})$ is the lowest frequency. The lowest of these frequencies is the maximum data-path frequency for the asynchronous configuration.

The parameter t_{OH} indicates the system compatibility of this device when driving other synchronous logic with positive input hold times, which is controlled by the same synchronous clock. If t_{OH} is greater than the minimum required input hold time of the subsequent synchronous logic, then the devices are guaranteed to function properly with a common synchronous clock under worst-case environmental and supply voltage conditions.

The parameter t_{AOH} indicates the system compatibility of this device when driving subsequent registered logic with a positive hold time and using the same clock as the CY7C344. In general, if t_{AOH} is greater than the minimum required input hold time of the subsequent logic (synchronous or asynchronous), then the devices are guaranteed to function properly under worst-case environmental and supply voltage conditions, provided the clock signal source is the same. This also applies if expander logic is used in the clock signal path of the driving device, but not for the driven device. This is due to the expander logic in the second device's clock signal path adding an additional delay (t_{EXP}), causing the output data from the preceding device to change prior to the arrival of the clock signal at the following device's register.

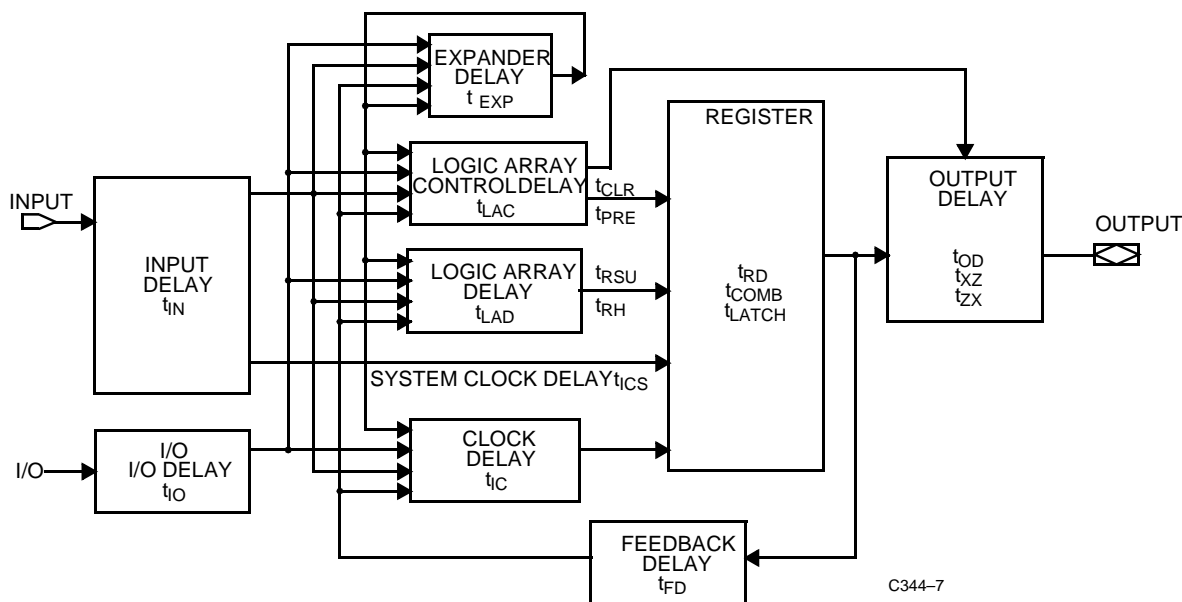


Figure 1. CY7C344 Timing Model.

External Synchronous Switching Characteristics^[7] Over Operating Range

| Parameter | Description | | 7C344-15 | | 7C344-20 | | 7C344-25 | | Unit |
|------------------|---|------------|----------|------|----------|------|----------|------|------|
| | | | Min. | Max. | Min. | Max. | Min. | Max. | |
| t _{PD1} | Dedicated Input to Combinatorial Output Delay ^[8] | Com'l/Ind | | 15 | | 20 | | 25 | ns |
| | | Mil | | 15 | | 20 | | 25 | |
| t _{PD2} | I/O Input to Combinatorial Output Delay ^[9] | Com'l/Ind | | 15 | | 20 | | 25 | ns |
| | | Mil | | 15 | | 20 | | 25 | |
| t _{PD3} | Dedicated Input to Combinatorial Output Delay with Expander Delay ^[10] | Com'l/Ind | | 30 | | 30 | | 40 | ns |
| | | Mil | | 30 | | 30 | | 40 | |
| t _{PD4} | I/O Input to Combinatorial Output Delay with Expander Delay ^[4, 11] | Com'l/Ind | | 30 | | 30 | | 40 | ns |
| | | Mil | | 30 | | 30 | | 40 | |
| t _{EA} | Input to Output Enable Delay ^[4] | Com'l/Ind | | 20 | | 20 | | 25 | ns |
| | | Mil | | 20 | | 20 | | 25 | |
| t _{ER} | Input to Output Disable Delay ^[4] | Com'l/Ind | | 20 | | 20 | | 25 | ns |
| | | Mil | | 20 | | 20 | | 25 | |
| t _{CO1} | Synchronous Clock Input to Output Delay | Com'l/Ind | | 10 | | 12 | | 15 | ns |
| | | Mil | | 10 | | 12 | | 15 | |
| t _{CO2} | Synchronous Clock to Local Feedback to Combinatorial Output ^[4, 12] | Com'l/Ind | | 20 | | 22 | | 29 | ns |
| | | Mil | | 20 | | 22 | | 29 | |
| t _S | Dedicated Input or Feedback Set-Up Time to Synchronous Clock Input | Com'l/Ind | 10 | | 12 | | 15 | | ns |
| | | Mil | 10 | | 12 | | 15 | | |
| t _H | Input Hold Time from Synchronous Clock Input ^[7] | Com'l/Ind | 0 | | 0 | | 0 | | ns |
| | | Mil | 0 | | 0 | | 0 | | |
| t _{WH} | Synchronous Clock Input HIGH Time ^[4] | Com'l/Ind | 6 | | 7 | | 8 | | ns |
| | | Mil | 6 | | 7 | | 8 | | |
| t _{WL} | Synchronous Clock Input LOW Time ^[4] | Com'l/Ind | 6 | | 7 | | 8 | | ns |
| | | Mil | 6 | | 7 | | 8 | | |
| t _{RW} | Asynchronous Clear Width ^[4] | Com'l/Ind | 20 | | 20 | | 25 | | ns |
| | | Mil | 20 | | 20 | | 25 | | |
| t _{RR} | Asynchronous Clear Recovery Time ^[4] | Com'l/Ind | 20 | | 20 | | 25 | | ns |
| | | Mil | 20 | | 20 | | 25 | | |
| t _{RO} | Asynchronous Clear to Registered Output Delay ^[4] | Com'l/Ind | | 15 | | 20 | | 25 | ns |
| | | Mil | | 15 | | 20 | | 25 | |
| t _{PW} | Asynchronous Preset Width ^[4] | Com'l /Ind | 20 | | 20 | | 25 | | ns |
| | | Mil | 20 | | 20 | | 25 | | |
| t _{PR} | Asynchronous Preset Recovery Time ^[4] | Com'l /Ind | 20 | | 20 | | 25 | | ns |
| | | Mil | 20 | | 20 | | 25 | | |
| t _{PO} | Asynchronous Preset to Registered Output Delay ^[4] | Com'l /Ind | | 15 | | 20 | | 25 | ns |
| | | Mil | | 15 | | 20 | | 25 | |
| t _{CF} | Synchronous Clock to Local Feedback Input ^[4, 13] | Com'l /Ind | | 4 | | 4 | | 7 | ns |
| | | Mil | | 4 | | 4 | | 7 | |
| t _P | External Synchronous Clock Period (1/f _{MAX3}) ^[4] | Com'l/Ind | 13 | | 14 | | 16 | | ns |
| | | Mil | 13 | | 14 | | 16 | | |

External Synchronous Switching Characteristics^[7] Over Operating Range (continued)

| Parameter | Description | | 7C344-15 | | 7C344-20 | | 7C344-25 | | Unit |
|-------------------|--|-----------|----------|------|----------|------|----------|------|------|
| | | | Min. | Max. | Min. | Max. | Min. | Max. | |
| f _{MAX1} | External Maximum Frequency $(1/(t_{CO1} + t_S))^{[4, 14]}$ | Com'I/Ind | 50.0 | | 41.6 | | 33.3 | | MHz |
| | | Mil | 50.0 | | 41.6 | | 33.3 | | |
| f _{MAX2} | Maximum Frequency with Internal Only Feedback $(1/(t_{CF} + t_S))^{[4, 15]}$ | Com'I/Ind | 71.4 | | 62.5 | | 45.4 | | MHz |
| | | Mil | 71.4 | | 62.5 | | 45.4 | | |
| f _{MAX3} | Data Path Maximum Frequency, least of $1/(t_{WL} + t_{WH})$, $1/(t_S + t_H)$, or $(1/t_{CO1})^{[4, 16]}$ | Com'I/Ind | 83.3 | | 71.4 | | 62.5 | | MHz |
| | | Mil | 83.3 | | 71.4 | | 62.5 | | |
| f _{MAX4} | Maximum Register Toggle Frequency $1/(t_{WL} + t_{WH})^{[4, 17]}$ | Com'I/Ind | 83.3 | | 71.4 | | 62.5 | | MHz |
| | | Mil | 83.3 | | 71.4 | | 62.5 | | |
| t _{OH} | Output Data Stable Time from Synchronous Clock Input ^[4, 18] | Com'I/Ind | 3 | | 3 | | 3 | | ns |
| | | Mil | 3 | | 3 | | 3 | | |

Notes:

8. This parameter is the delay from an input signal applied to a dedicated input pin to a combinatorial output on any output pin. This delay assumes no expander terms are used to form the logic function.
9. This parameter is the delay associated with an input signal applied to an I/O macrocell pin to any output. This delay assumes no expander terms are used to form the logic function.
10. This parameter is the delay associated with an input signal applied to a dedicated input pin to combinatorial output on any output pin. This delay assumes expander terms are used to form the logic function and includes the worst-case expander logic delay for one pass through the expander logic. This parameter is tested periodically by sampling production material.
11. This parameter is the delay associated with an input signal applied to an I/O macrocell pin to any output pin. This delay assumes expander terms are used to form the logic function and includes the worst-case expander logic delay for one pass through the expander logic. This parameter is tested periodically by sampling production material.
12. This specification is a measure of the delay from synchronous register clock input to internal feedback of the register output signal to a combinatorial output for which the registered output signal is used as an input. This parameter assumes no expanders are used in the logic of the combinatorial output and the register is synchronously clocked. This parameter is tested periodically by sampling production material.
13. This specification is a measure of the delay associated with the internal register feedback path. This delay plus the register set-up time, t_S , is the minimum internal period for an internal state machine configuration. This parameter is tested periodically by sampling production material.
14. This specification indicates the guaranteed maximum frequency at which a state machine configuration with external only feedback can operate.
15. This specification indicates the guaranteed maximum frequency at which a state machine with internal-only feedback can operate. If register output states must also control external points, this frequency can still be observed as long as it is less than $1/t_{CO1}$. This specification assumes no expander logic is used. This parameter is tested periodically by sampling production material.
16. This frequency indicates the maximum frequency at which the device may operate in data-path mode (dedicated input pin to output pin). This assumes that no expander logic is used.
17. This specification indicates the guaranteed maximum frequency in synchronous mode, at which an individual output or buried register can be cycled by a clock signal applied to either a dedicated input pin or an I/O pin.
18. This parameter indicates the minimum time after a synchronous register clock input that the previous register output data is maintained on the output pin.

External Asynchronous Switching Characteristics Over Operating Range^[7]

| Parameter | Description | | 7C344-15 | | 7C344-20 | | 7C344-25 | | Unit |
|-------------|--|-----------|----------|------|----------|------|----------|------|------|
| | | | Min. | Max. | Min. | Max. | Min. | Max. | |
| t_{ACO1} | Asynchronous Clock Input to Output Delay | Com'l/Ind | | 15 | | 20 | | 25 | ns |
| | | Mil | | 15 | | 20 | | 25 | |
| t_{ACO2} | Asynchronous Clock Input to Local Feedback to Combinatorial Output ^[19] | Com'l/Ind | | 30 | | 30 | | 37 | ns |
| | | Mil | | 30 | | 30 | | 37 | |
| t_{AS} | Dedicated Input or Feedback Set-Up Time to Asynchronous Clock Input | Com'l/Ind | 7 | | 9 | | 12 | | ns |
| | | Mil | 7 | | 9 | | 12 | | |
| t_{AH} | Input Hold Time from Asynchronous Clock Input | Com'l/Ind | 7 | | 9 | | 12 | | ns |
| | | Mil | 7 | | 9 | | 12 | | |
| t_{AWH} | Asynchronous Clock Input HIGH Time ^[4, 20] | Com'l/Ind | 6 | | 7 | | 9 | | ns |
| | | Mil | 6 | | 7 | | 9 | | |
| t_{AWL} | Asynchronous Clock Input LOW Time ^[4] | Com'l/Ind | 7 | | 9 | | 11 | | ns |
| | | Mil | 7 | | 9 | | 11 | | |
| t_{ACF} | Asynchronous Clock to Local Feedback Input ^[4, 21] | Com'l/Ind | | 18 | | 18 | | 21 | ns |
| | | Mil | | 18 | | 18 | | 21 | |
| t_{AP} | External Asynchronous Clock Period ($1/f_{MAX4}$) ^[4] | Com'l/Ind | 13 | | 16 | | 20 | | ns |
| | | Mil | 13 | | 16 | | 20 | | |
| f_{MAXA1} | External Maximum Frequency in Asynchronous Mode $1/(t_{ACO1} + t_{AS})$ ^[4, 22] | Com'l/Ind | 45.4 | | 34.4 | | 27 | | MHz |
| | | Mil | 45.4 | | 34.4 | | 27 | | |
| f_{MAXA2} | Maximum Internal Asynchronous Frequency $1/(t_{ACF} + t_{AS})$ or $1/(t_{AWH} + t_{AWL})$ ^[4, 23] | Com'l/Ind | 40 | | 37 | | 30.3 | | MHz |
| | | Mil | 40 | | 37 | | 30.3 | | |
| f_{MAXA3} | Data Path Maximum Frequency in Asynchronous Mode ^[4, 24] | Com'l/Ind | 66.6 | | 50 | | 40 | | MHz |
| | | Mil | 66.6 | | 50 | | 40 | | |
| f_{MAXA4} | Maximum Asynchronous Register Toggle Frequency $1/(t_{AWH} + t_{AWL})$ ^[4, 25] | Com'l/Ind | 76.9 | | 62.5 | | 50 | | MHz |
| | | Mil | 76.9 | | 62.5 | | 50 | | |
| t_{AOH} | Output Data Stable Time from Asynchronous Clock Input ^[4, 26] | Com'l/Ind | 15 | | 15 | | 15 | | ns |
| | | Mil | 15 | | 15 | | 15 | | |

Notes:

19. This specification is a measure of the delay from an asynchronous register clock input to internal feedback of the registered output signal to a combinatorial output for which the registered output signal is used as an input. Assumes no expanders are used in logic of combinatorial output or the asynchronous clock input. This parameter is tested periodically by sampling production material.
20. This parameter is measured with a positive-edge-triggered clock at the register. For negative edge triggering, the t_{AWH} and t_{AWL} parameters must be swapped. If a given input is used to clock multiple registers with both positive and negative polarity, t_{AWH} should be used for both t_{AWH} and t_{AWL} .
21. This specification is a measure of the delay associated with the internal register feedback path for an asynchronously clocked register. This delay plus the asynchronous register set-up time, t_{AS} , is the minimum internal period for an asynchronously clocked state machine configuration. This delay assumes no expander logic in the asynchronous clock path. This parameter is tested periodically by sampling production material.
22. This parameter indicates the guaranteed maximum frequency at which an asynchronously clocked state machine configuration with external feedback can operate. It is assumed that no expander logic is employed in the clock signal path or data path.
23. This specification indicates the guaranteed maximum frequency at which an asynchronously clocked state machine with internal-only feedback can operate. If register output states must also control external points, this frequency can still be observed as long as this frequency is less than $1/t_{ACO1}$. This specification assumes no expander logic is utilized. This parameter is tested periodically by sampling production material.
24. This specification indicates the guaranteed maximum frequency at which an individual output or buried register can be cycled in asynchronously clocked mode. This frequency is least of $1/(t_{AWH} + t_{AWL})$, $1/(t_{AS} + t_{AH})$, or $1/t_{ACO1}$. It also indicates the maximum frequency at which the device may operate in the asynchronously clocked data-path mode. Assumes no expander logic is used.
25. This specification indicates the guaranteed maximum frequency at which an individual output or buried register can be cycled in asynchronously clocked mode by a clock signal applied to an external dedicated input or an I/O pin.
26. This parameter indicates the minimum time that the previous register output data is maintained on the output pin after an asynchronous register clock input to an external dedicated input or I/O pin.

Typical Internal Switching Characteristics Over Operating Range^[7]

| Parameter | Description | | 7C344-15 | | 7C344-20 | | 7C344-25 | | Unit |
|--------------------|---|-----------|----------|------|----------|------|----------|------|------|
| | | | Min. | Max. | Min. | Max. | Min. | Max. | |
| t _{IN} | Dedicated Input Pad and Buffer Delay | Com'I/Ind | | 4 | | 5 | | 7 | ns |
| | | Mil | | 4 | | 5 | | 7 | |
| t _{IO} | I/O Input Pad and Buffer Delay | Com'I/Ind | | 4 | | 5 | | 7 | ns |
| | | Mil | | 4 | | 5 | | 7 | |
| t _{EXP} | Expander Array Delay | Com'I/Ind | | 8 | | 10 | | 15 | ns |
| | | Mil | | 8 | | 10 | | 15 | |
| t _{LAD} | Logic Array Data Delay | Com'I/Ind | | 7 | | 9 | | 10 | ns |
| | | Mil | | 7 | | 9 | | 10 | |
| t _{LAC} | Logic Array Control Delay | Com'I/Ind | | 5 | | 7 | | 7 | ns |
| | | Mil | | 5 | | 7 | | 7 | |
| t _{OD} | Output Buffer and Pad Delay | Com'I/Ind | | 4 | | 5 | | 5 | ns |
| | | Mil | | 4 | | 5 | | 5 | |
| t _{ZX} | Output Buffer Enable Delay ^[27] | Com'I/Ind | | 7 | | 8 | | 11 | ns |
| | | Mil | | 7 | | 8 | | 11 | |
| t _{XZ} | Output Buffer Disable Delay | Com'I/Ind | | 7 | | 8 | | 11 | ns |
| | | Mil | | 7 | | 8 | | 11 | |
| t _{RSU} | Register Set-Up Time Relative to Clock Signal at Register | Com'I/Ind | 5 | | 5 | | 8 | | ns |
| | | Mil | 5 | | 5 | | 8 | | |
| t _{RH} | Register Hold Time Relative to Clock Signal at Register | Com'I/Ind | 7 | | 9 | | 12 | | ns |
| | | Mil | 7 | | 9 | | 12 | | |
| t _{LATCH} | Flow-Through Latch Delay | Com'I/Ind | | 1 | | 1 | | 3 | ns |
| | | Mil | | 1 | | 1 | | 3 | |
| t _{RD} | Register Delay | Com'I/Ind | | 1 | | 1 | | 1 | ns |
| | | Mil | | 1 | | 1 | | 1 | |
| t _{COMB} | Transparent Mode Delay ^[28] | Com'I/Ind | | 1 | | 1 | | 3 | ns |
| | | Mil | | 1 | | 1 | | 3 | |
| t _{CH} | Clock HIGH Time | Com'I/Ind | 6 | | 7 | | 8 | | ns |
| | | Mil | 6 | | 7 | | 8 | | |
| t _{CL} | Clock LOW Time | Com'I/Ind | 6 | | 7 | | 8 | | ns |
| | | Mil | 6 | | 7 | | 8 | | |
| t _{IC} | Asynchronous Clock Logic Delay | Com'I/Ind | | 7 | | 8 | | 10 | ns |
| | | Mil | | 7 | | 8 | | 10 | |
| t _{ICS} | Synchronous Clock Delay | Com'I/Ind | | 1 | | 2 | | 3 | ns |
| | | Mil | | 1 | | 2 | | 3 | |
| t _{FD} | Feedback Delay | Com'I/Ind | | 1 | | 1 | | 1 | ns |
| | | Mil | | 1 | | 1 | | 1 | |
| t _{PRE} | Asynchronous Register Preset Time | Com'I/Ind | | 5 | | 6 | | 9 | ns |
| | | Mil | | 5 | | 6 | | 9 | |
| t _{CLR} | Asynchronous Register Clear Time | Com'I/Ind | | 5 | | 6 | | 9 | ns |
| | | Mil | | 5 | | 6 | | 9 | |
| t _{PCW} | Asynchronous Preset and Clear Pulse Width | Com'I/Ind | 5 | | 5 | | 7 | | ns |
| | | Mil | 5 | | 5 | | 7 | | |

Typical Internal Switching Characteristics Over Operating Range^[7] (continued)

| Parameter | Description | | 7C344-15 | | 7C344-20 | | 7C344-25 | | Unit |
|------------------|---|-----------|----------|------|----------|------|----------|------|------|
| | | | Min. | Max. | Min. | Max. | Min. | Max. | |
| t _{PCR} | Asynchronous Preset and Clear Recovery Time | Com'l/Ind | 5 | | 5 | | 7 | | ns |
| | | Mil | 5 | | 5 | | 7 | | |

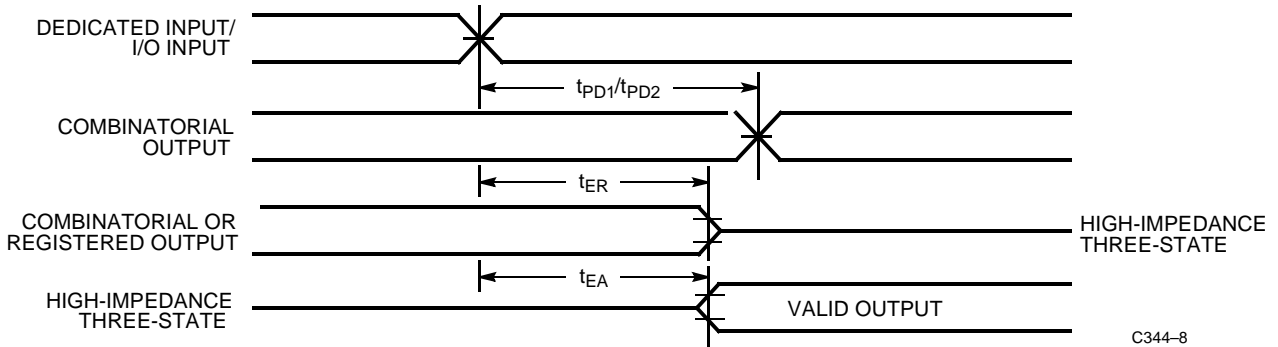
Notes:

27. Sample tested only for an output change of 500 mV.

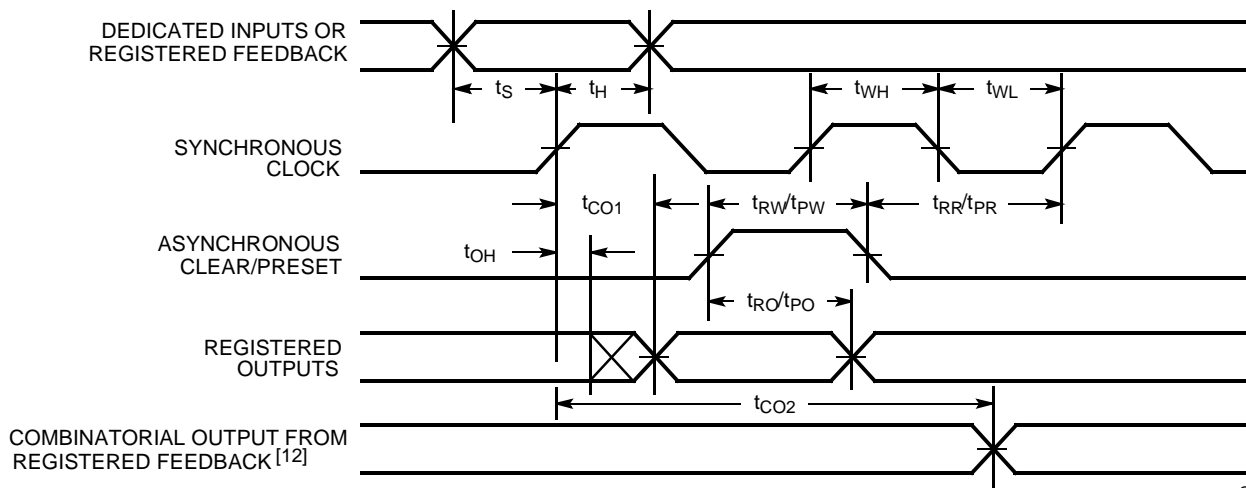
28. This specification guarantees the maximum combinatorial delay associated with the macrocell register bypass when the macrocell is configured for combinatorial operation.

Switching Waveforms

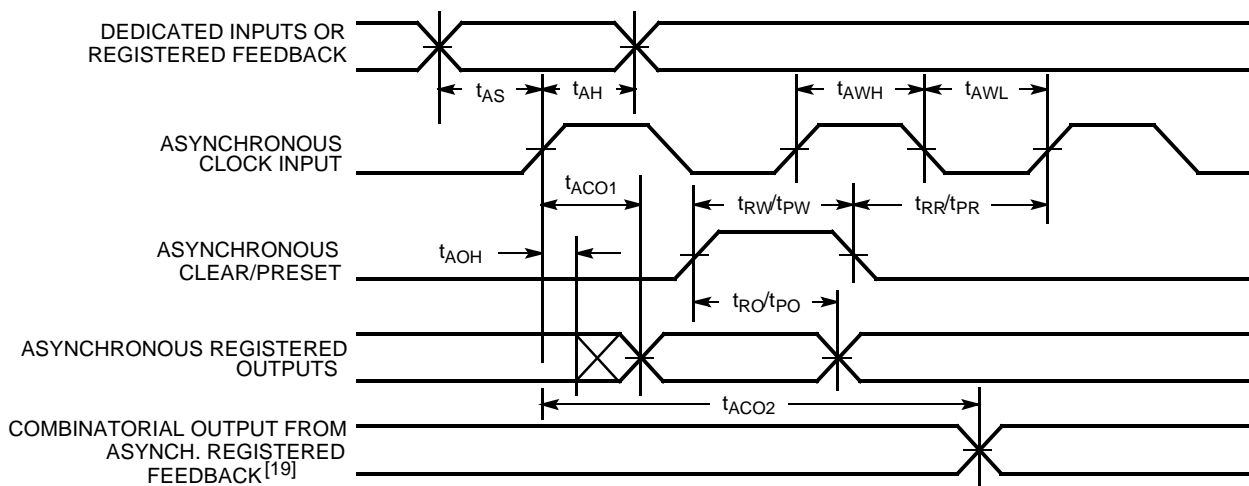
External Combinatorial

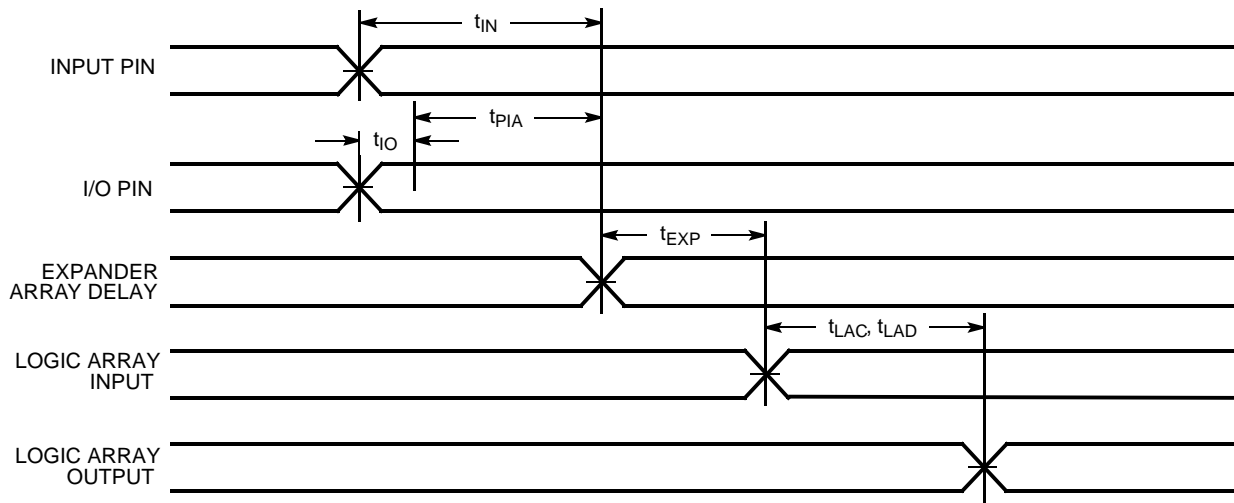


External Synchronous

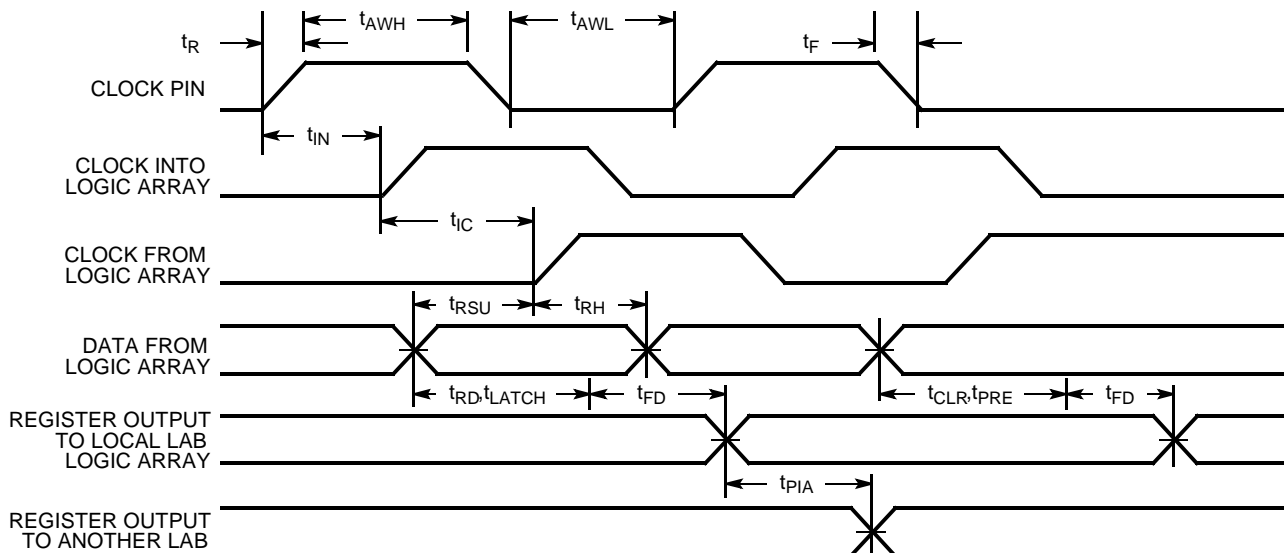


External Asynchronous

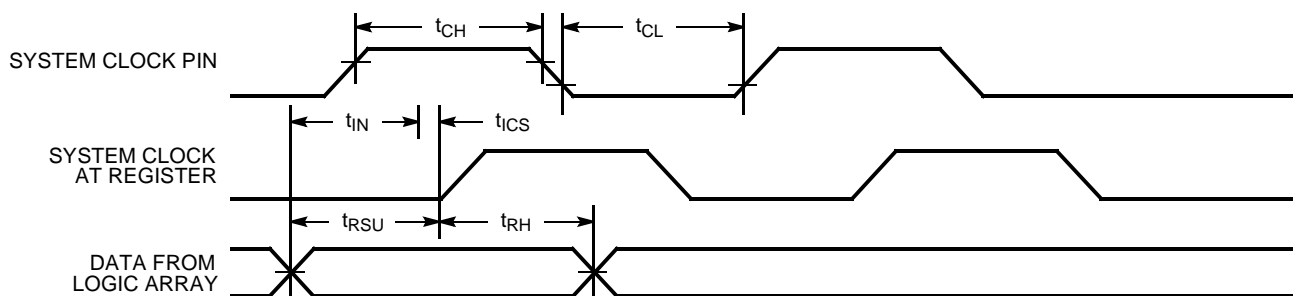


Switching Waveforms (continued)
Internal Combinatorial


C344-11

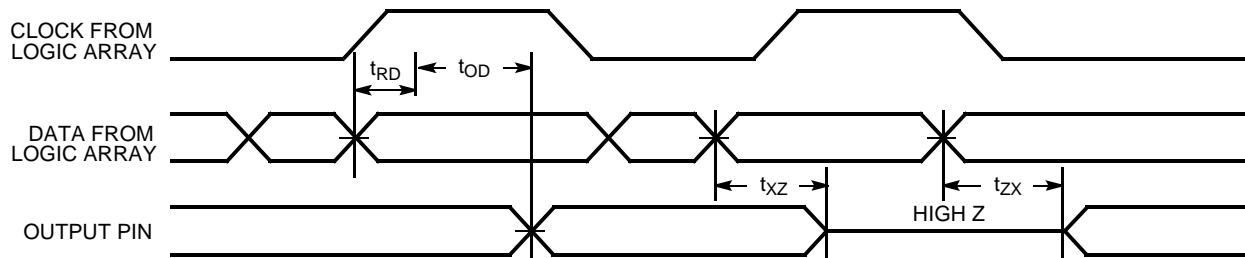
Internal Asynchronous


C344-12

Internal Synchronous (Input Path)


C344-13

Switching Waveforms (continued)

Internal Synchronous (Output Path)


C344-14

Ordering Information

| Speed (ns) | Ordering Code | Package Name | Package Type | Operating Range |
|------------|-----------------|--------------|--------------------------------------|-----------------------|
| 15 | CY7C344-15HC/HI | H64 | 28-Lead Windowed Leaded Chip Carrier | Commercial/Industrial |
| | CY7C344-15JC/JI | J64 | 28-Lead Plastic Leaded Chip Carrier | |
| | CY7C344-15PC/PI | P21 | 28-Lead (300-Mil) Molded DIP | |
| | CY7C344-15WC/WI | W22 | 28-Lead Windowed CerDIP | |
| 20 | CY7C344-20HC/HI | H64 | 28-Lead Windowed Leaded Chip Carrier | Commercial/Industrial |
| | CY7C344-20JC/JI | J64 | 28-Lead Plastic Leaded Chip Carrier | |
| | CY7C344-20PC/PI | P21 | 28-Lead (300-Mil) Molded DIP | |
| | CY7C344-20WC/WI | W22 | 28-Lead Windowed CerDIP | |
| | CY7C344-20HMB | H64 | 28-Lead Windowed Leaded Chip Carrier | Military |
| | CY7C344-20WMB | W22 | 28-Lead Windowed CerDIP | |
| 25 | CY7C344-25HC/HI | H64 | 28-Lead Windowed Leaded Chip Carrier | Commercial/Industrial |
| | CY7C344-25JC/JI | J64 | 28-Lead Plastic Leaded Chip Carrier | |
| | CY7C344-25PC/PI | P21 | 28-Lead (300-Mil) Molded DIP | |
| | CY7C344-25WC/WI | W22 | 28-Lead Windowed CerDIP | |
| | CY7C344-25HMB | H64 | 28-Lead Windowed Leaded Chip Carrier | Military |
| | CY7C344-25WMB | W22 | 28-Lead Windowed CerDIP | |

MILITARY SPECIFICATIONS
Group A Subgroup Testing
DC Characteristics

| Parameter | Subgroups |
|-----------|-----------|
| V_{OH} | 1, 2, 3 |
| V_{OL} | 1, 2, 3 |
| V_{IH} | 1, 2, 3 |
| V_{IL} | 1, 2, 3 |
| I_{IX} | 1, 2, 3 |
| I_{OZ} | 1, 2, 3 |
| I_{CC1} | 1, 2, 3 |

Switching Characteristics

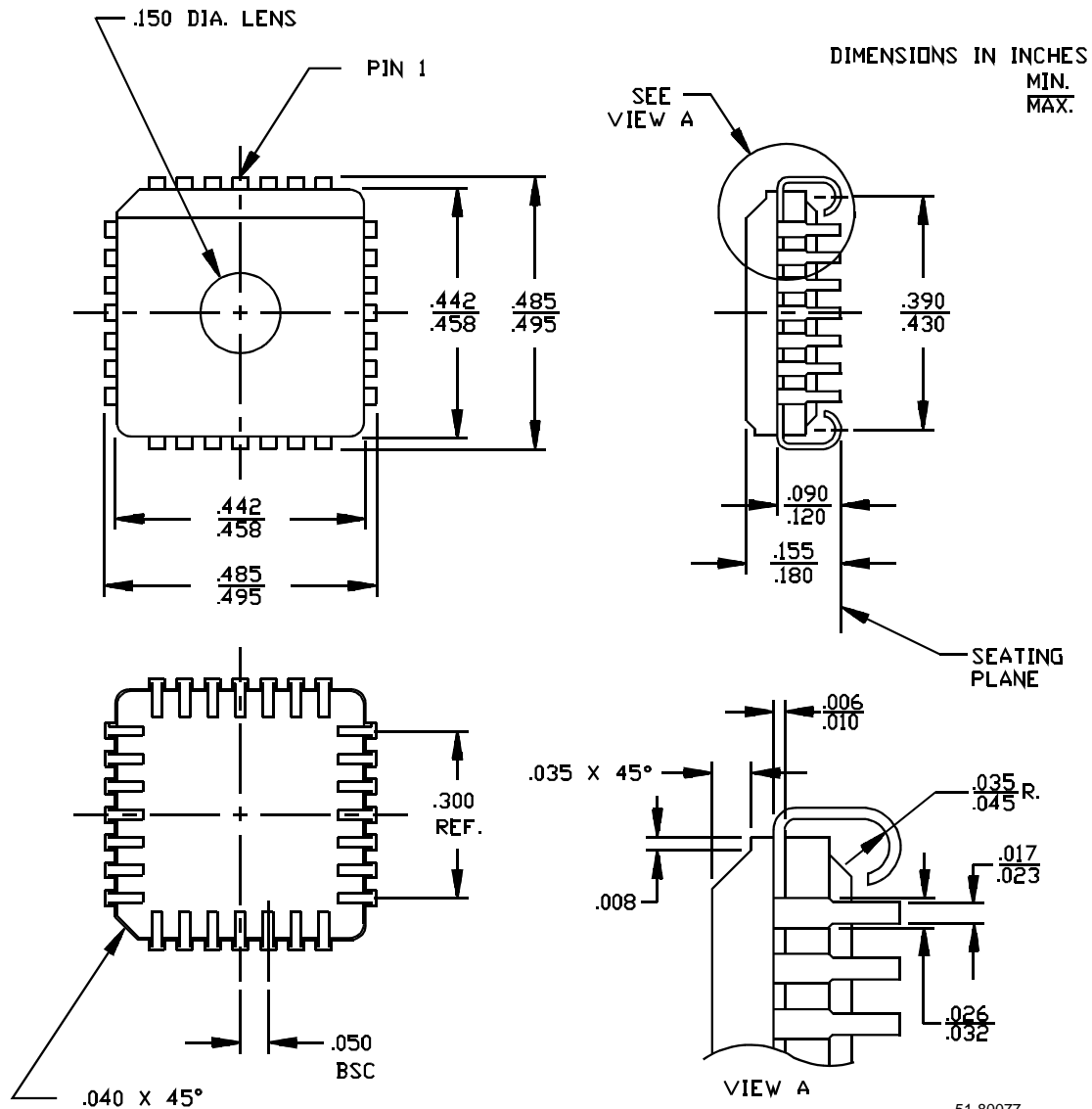
| Parameter | Subgroups |
|------------|-----------------|
| t_{PD1} | 7, 8, 9, 10, 11 |
| t_{PD2} | 7, 8, 9, 10, 11 |
| t_{PD3} | 7, 8, 9, 10, 11 |
| t_{CO1} | 7, 8, 9, 10, 11 |
| t_S | 7, 8, 9, 10, 11 |
| t_H | 7, 8, 9, 10, 11 |
| t_{ACO1} | 7, 8, 9, 10, 11 |
| t_{ACO1} | 7, 8, 9, 10, 11 |
| t_{AS} | 7, 8, 9, 10, 11 |
| t_{AH} | 7, 8, 9, 10, 11 |

MAX is a registered trademark of Altera Corporation.

Warp, Warp Professional, and Warp Enterprise are trademarks of Cypress Semiconductor.

Package Diagrams

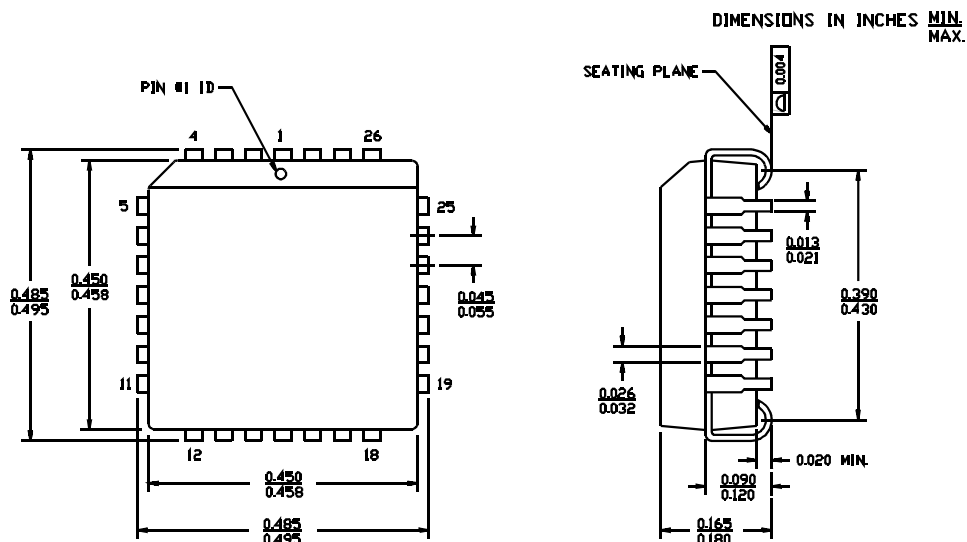
28-Pin Windowed Leaded Chip Carrier H64



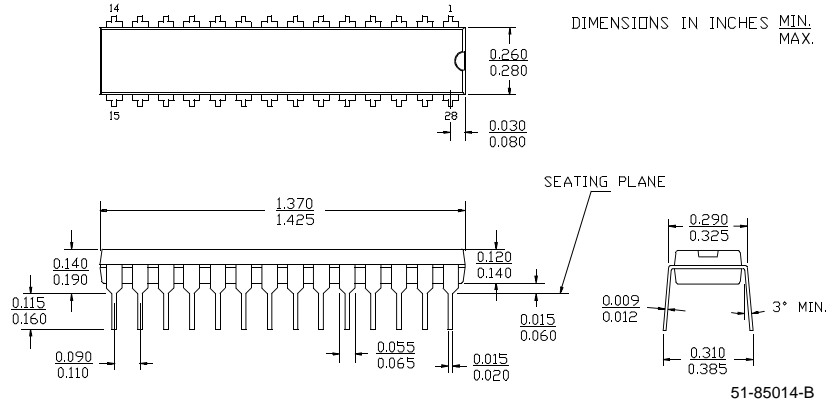
51-80077

Package Diagrams (continued)

28-Lead Plastic Leaded Chip Carrier J64

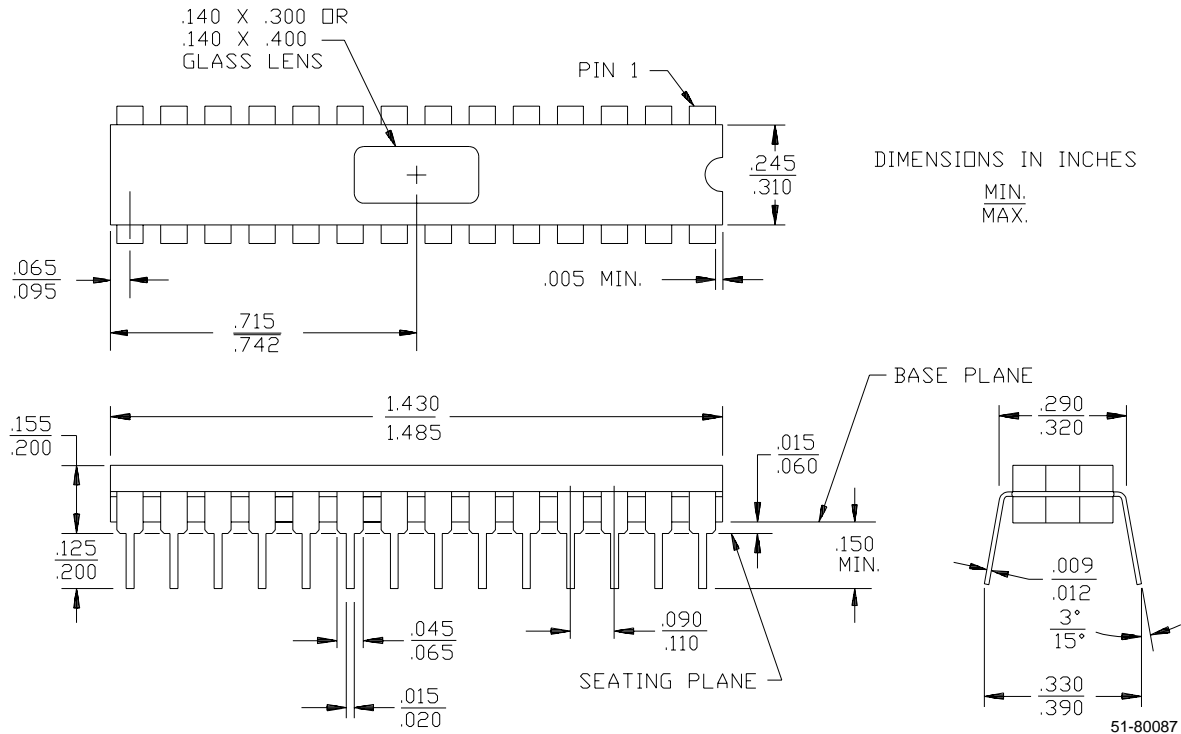


28-Lead (300-Mil) Molded DIP P21



Package Diagrams (continued)

28-Lead (300-Mil) Windowed CerDIP W22
MIL-STD-1835 D-15 Config. A



Document Title: CY7C344 32-Macrocell MAX® EPLD
Document Number: 38-03006

| REV. | ECN NO. | Issue Date | Orig. of Change | Description of Change |
|------|---------|------------|-----------------|---|
| ** | 106271 | 04/19/01 | SZV | Change from Spec number: 38-00127 to 38-03006 |