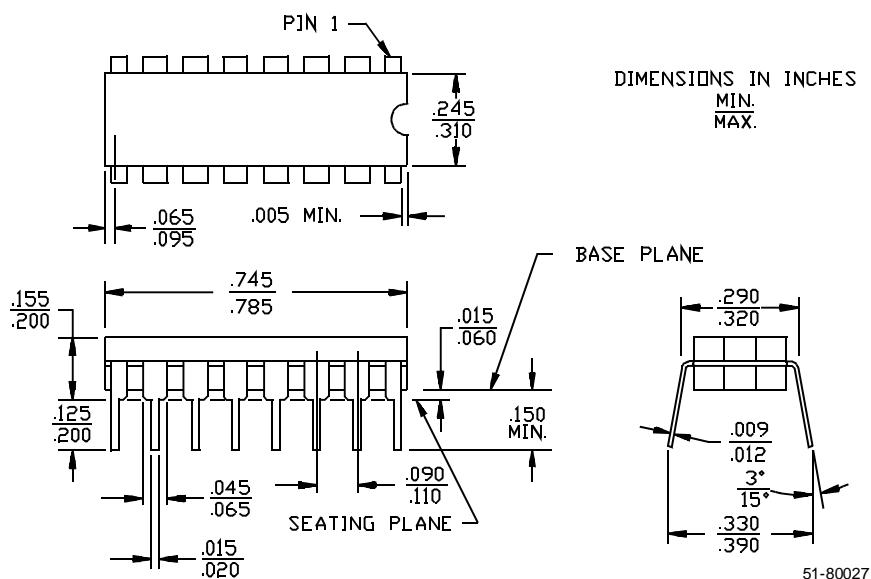
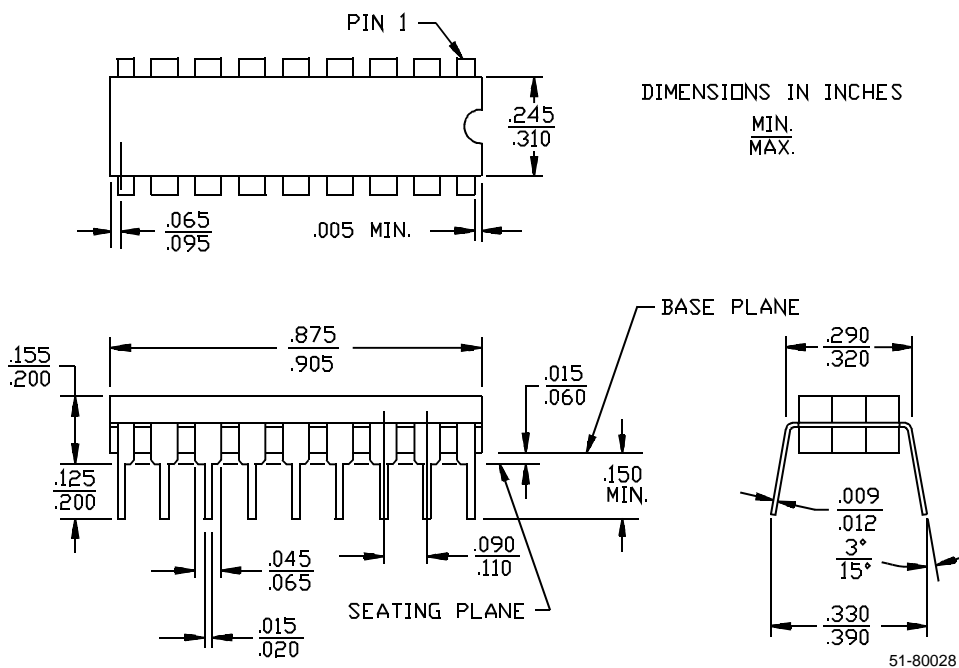


## Ceramic Dual-In-Line Packages

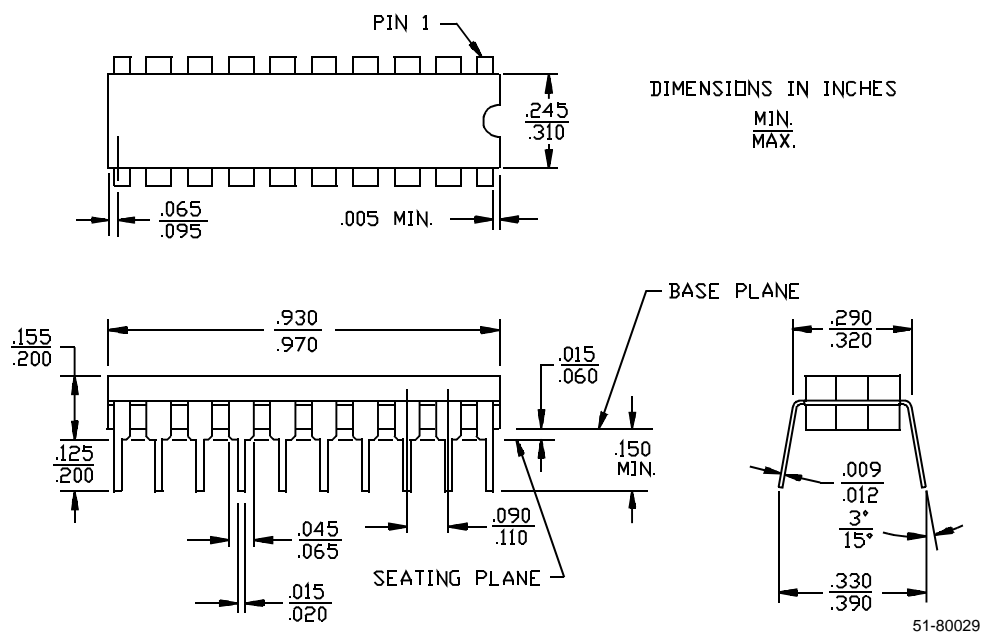
**16-Lead (300-Mil) CerDIP D2**  
MIL-STD-1835 D-2 Config. A



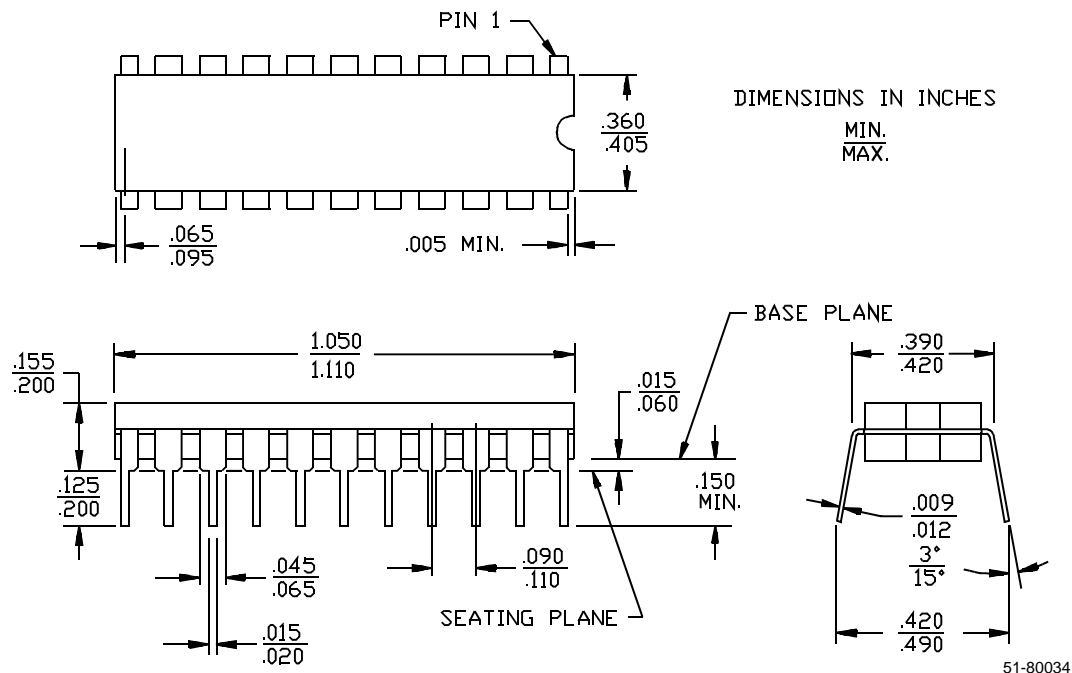
**18-Lead (300-Mil) CerDIP D4**  
MIL-STD-1835 D-6 Config. A



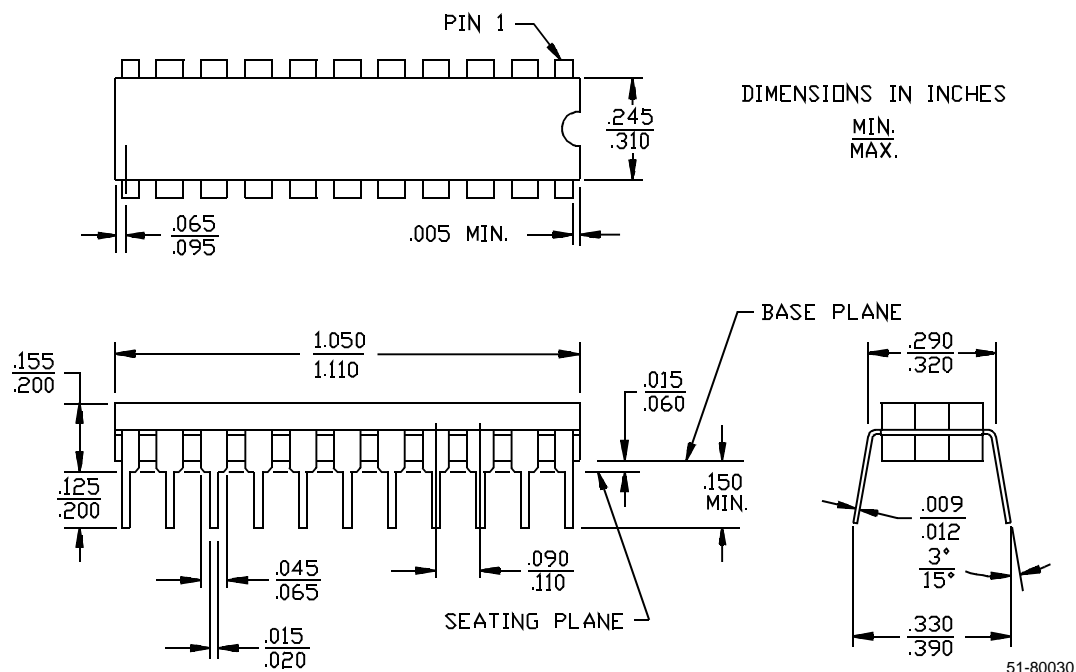
**20-Lead (300-Mil) CerDIP D6**  
MIL-STD-1835 D-8 Config. A



**22-Lead (400-Mil) CerDIP**  
MIL-STD-1835 D-7 Config. A

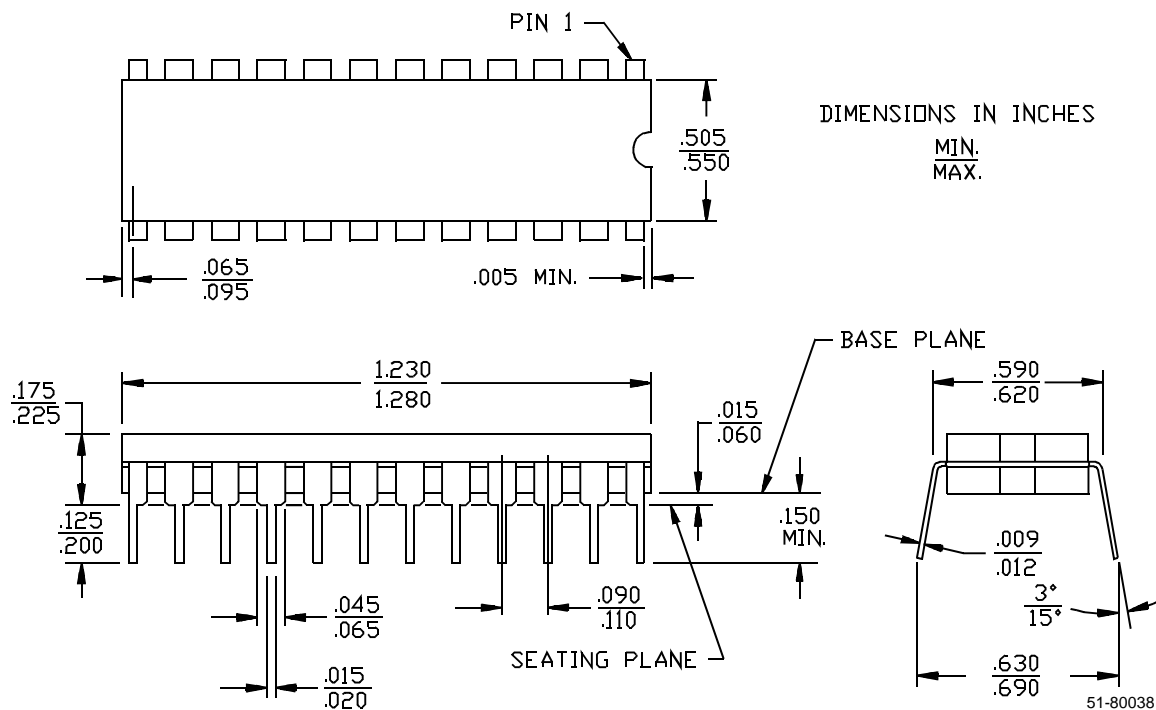


## 22-Lead (300-Mil) CerDIP D10



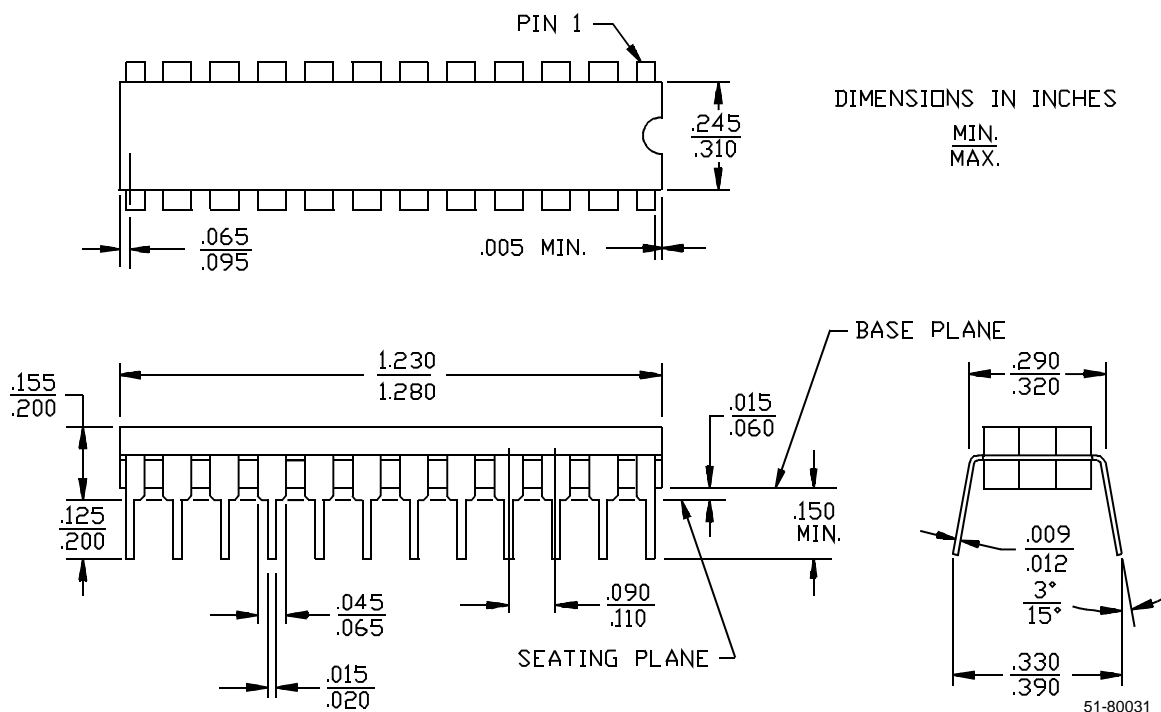
## 24-Lead (600-Mil) CerDIP D12

MIL-STD-1835 D-3 Config. A



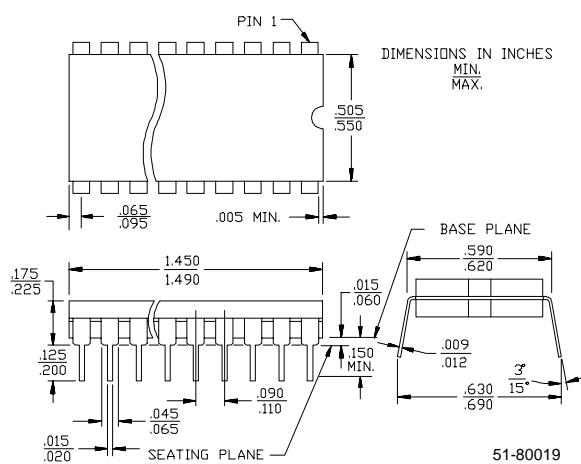
## 24-Lead (300-Mil) CerDIP D14

MIL-STD-1835 D-9 Config.A



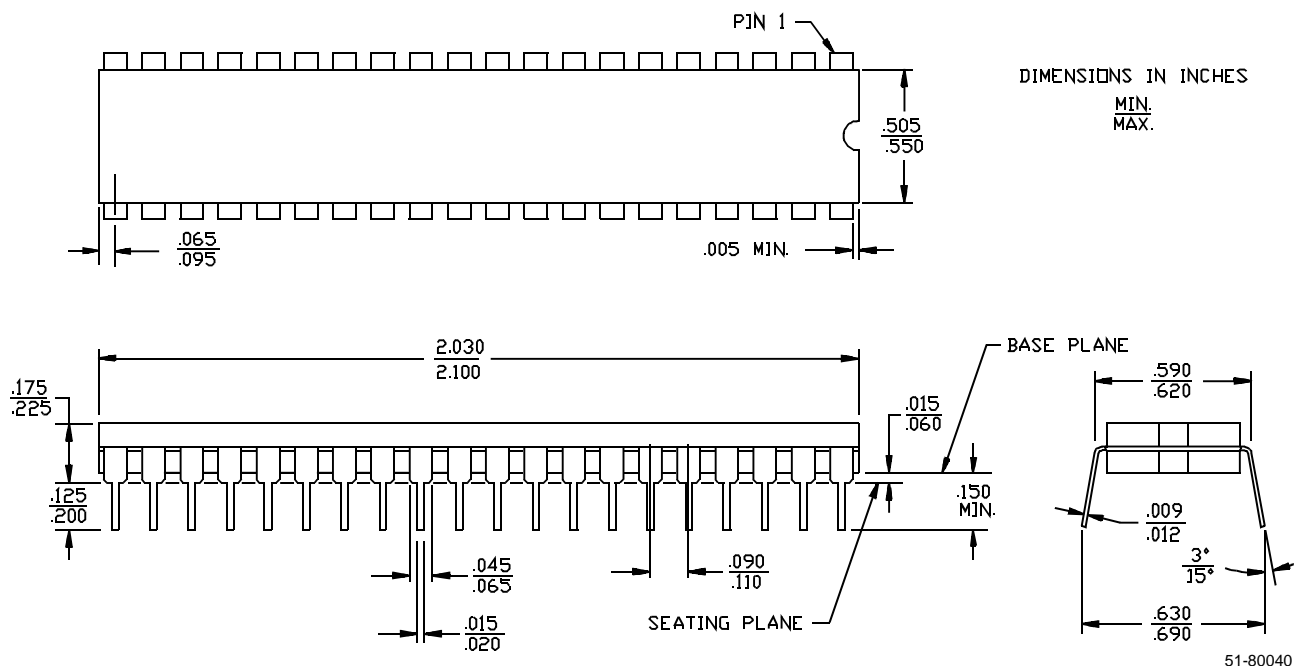
## 28-Lead (600-Mil) CerDIP D16

MIL-STD-1835 D-10 Config. A

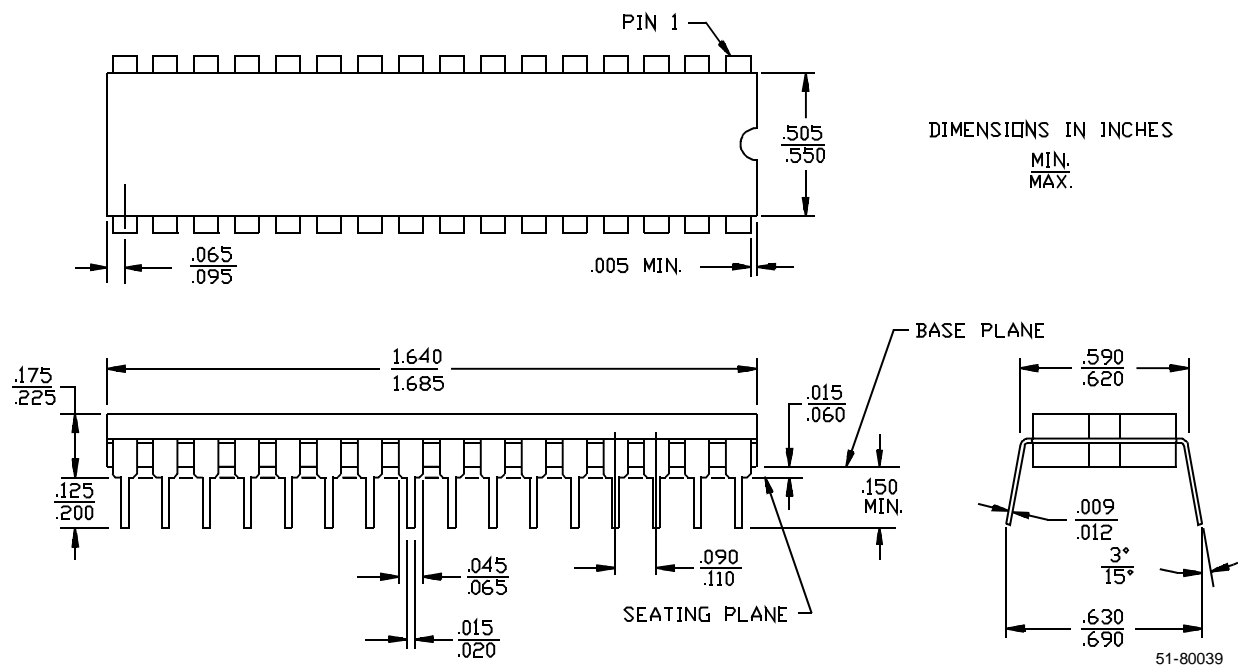


## 40-Lead (600-Mil) CerDIP D18

MIL-STD-1835 D-5 Config. A

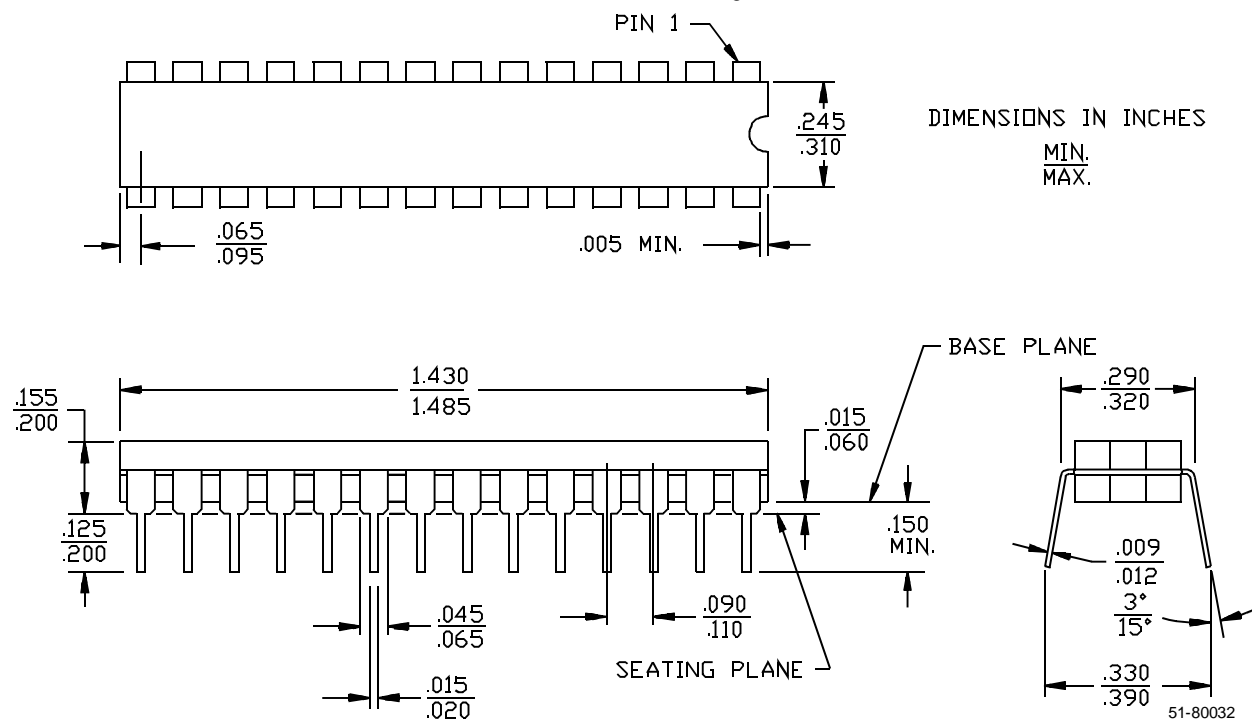


## 32-Lead (600-Mil) CerDIP D20



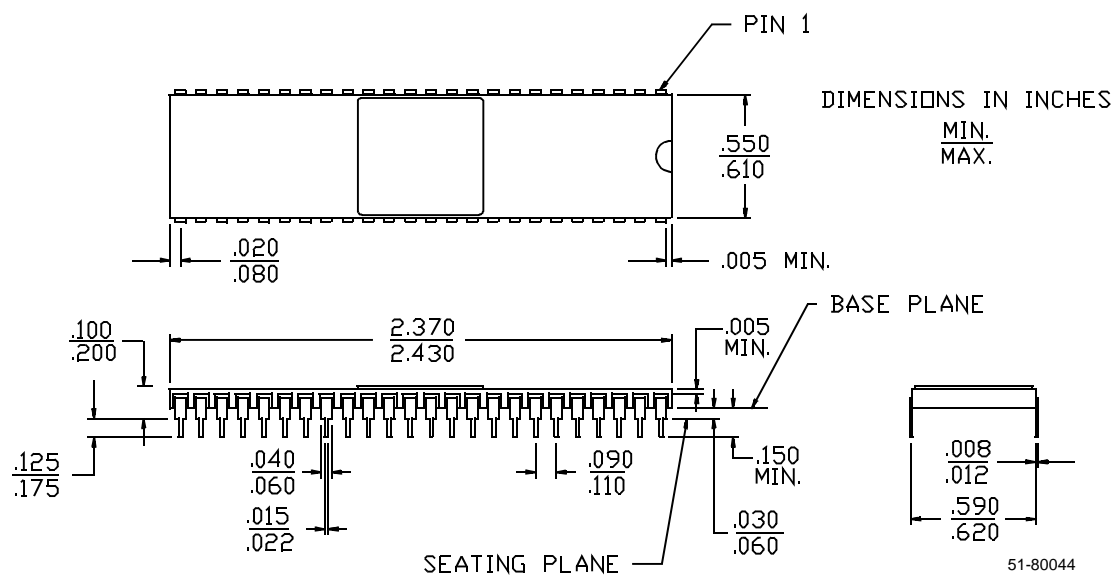
## 28-Lead (300-Mil) CerDIP D22

MIL-STD-1835 D-15 Config. A



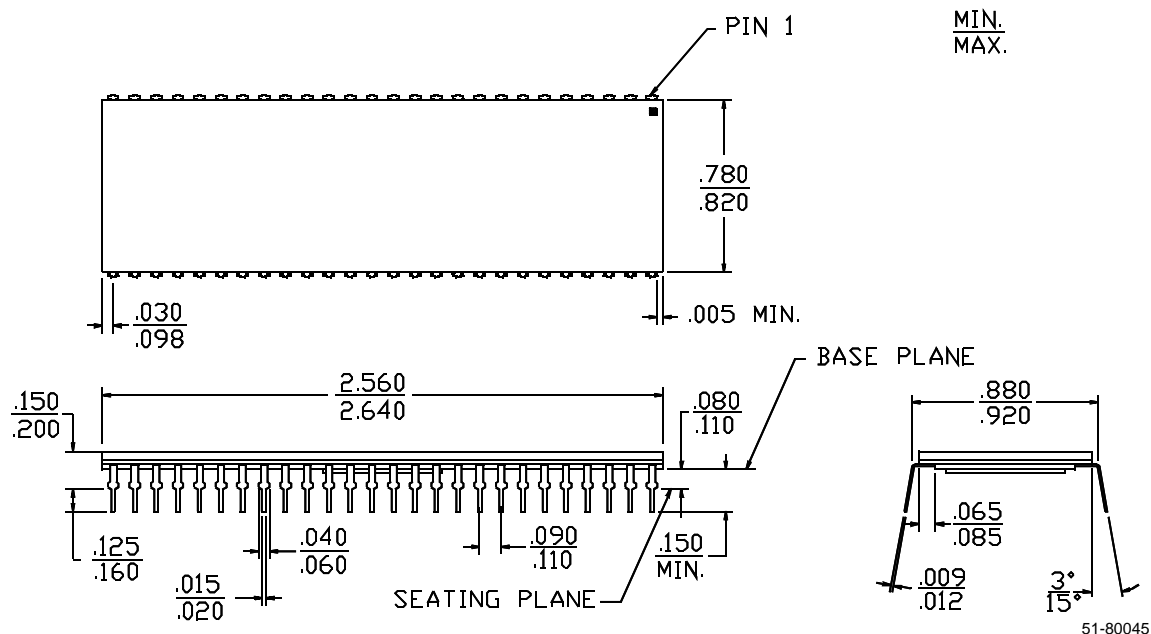
## 48-Lead (600-Mil) Sidebrazed DIP D26

MIL-STD-1835 D-14 Config. C



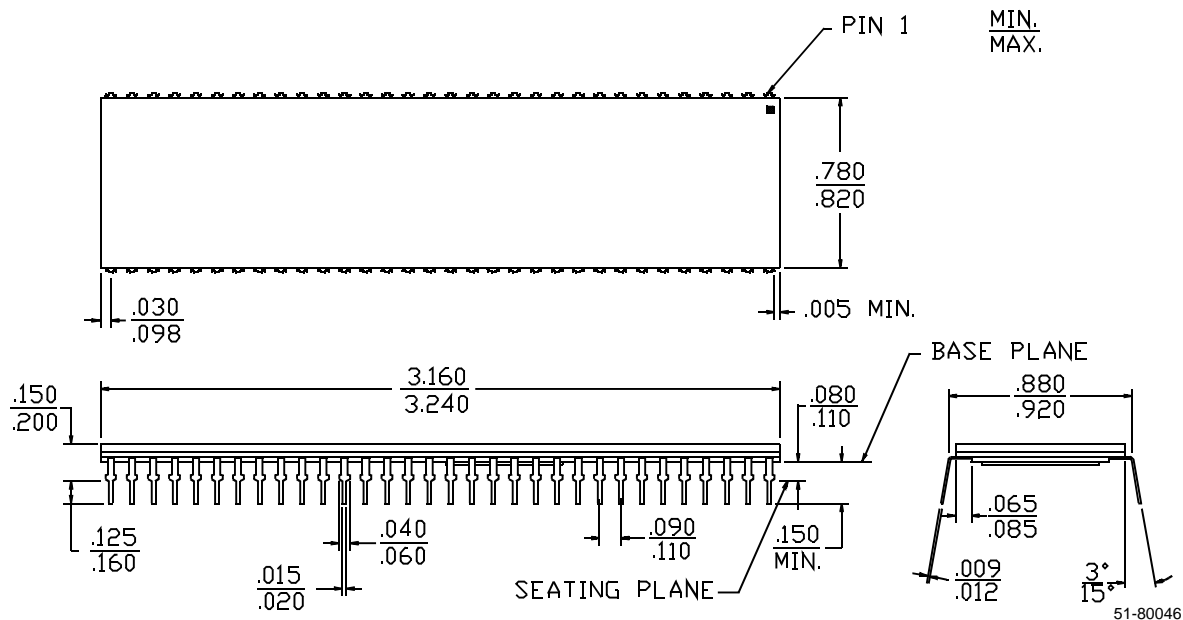
## 52-Lead (900-Mil) Bottombrazed DIP D28

DIMENSIONS IN INCHES

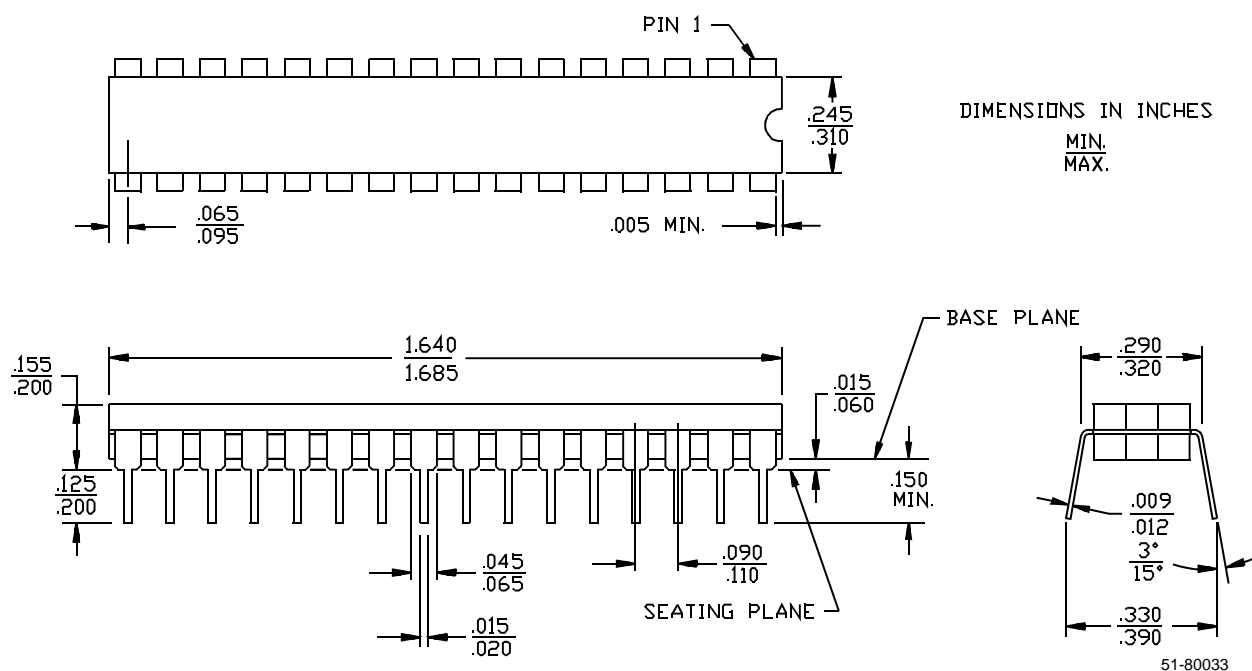


## 64-Lead (900-Mil) Bottombrazed DIP D30

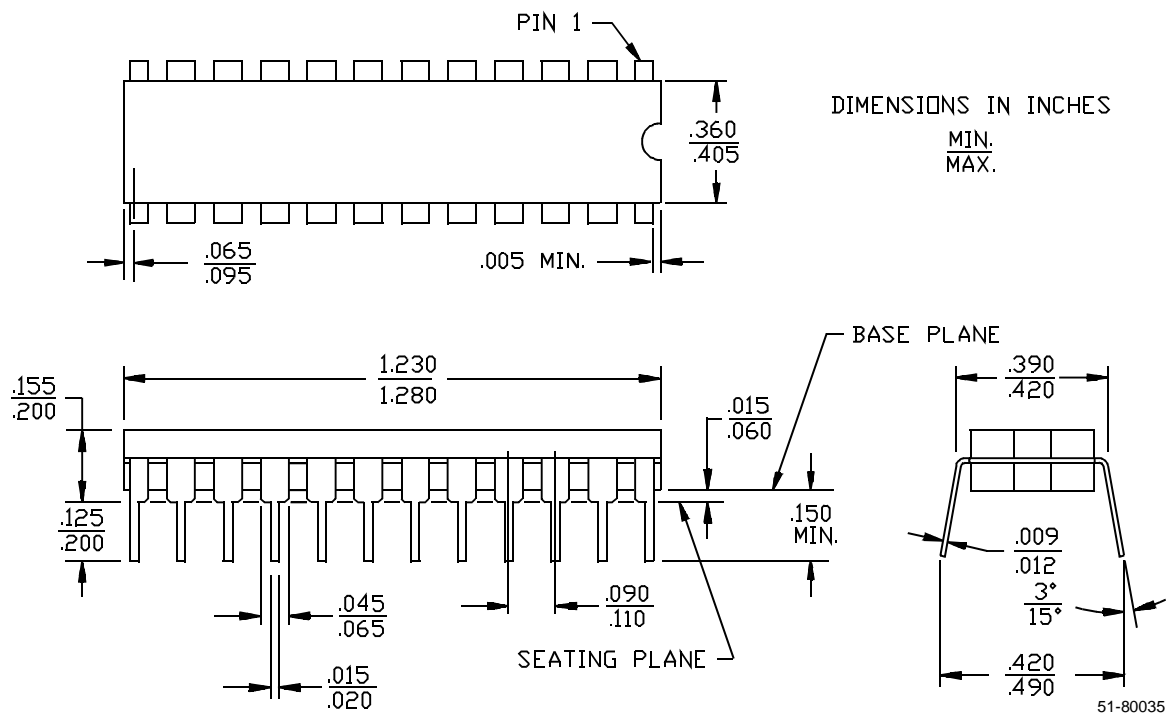
DIMENSIONS IN INCHES



## 32-Lead (300-Mil) CerDIP D32

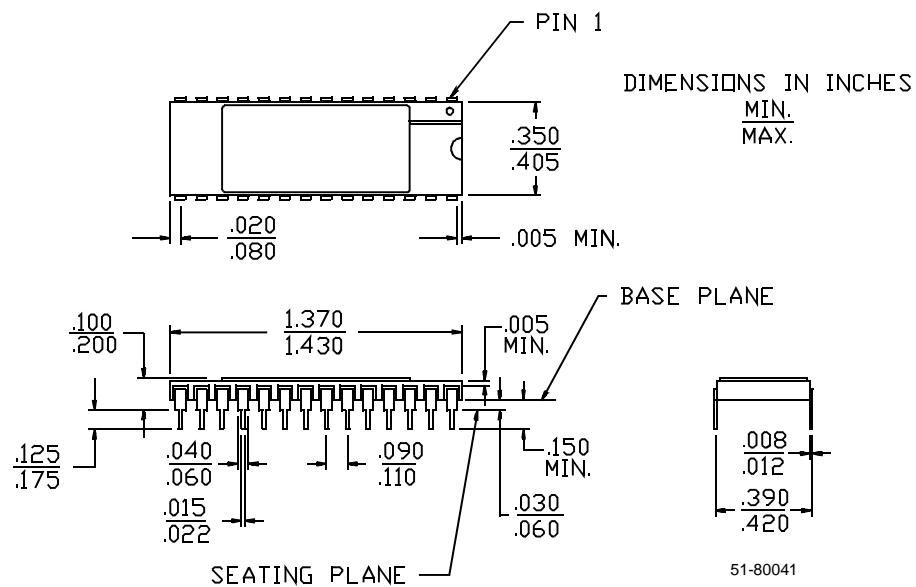


## 24-Pin (400-Mil) CerDIP D40

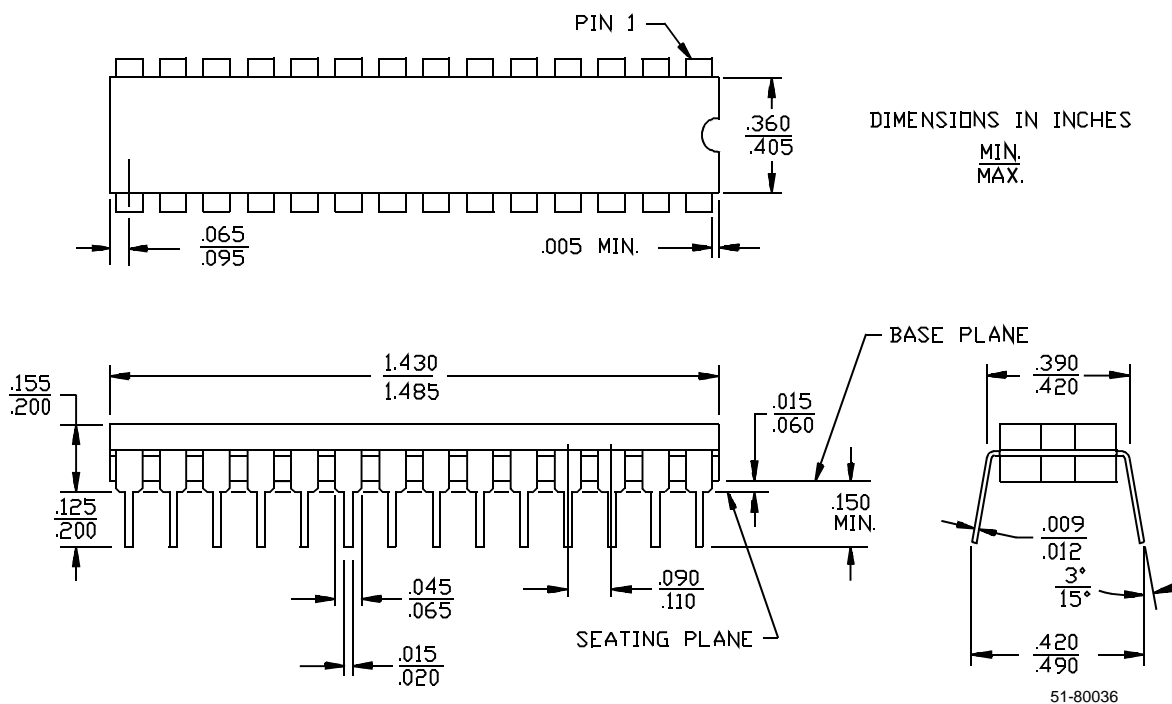




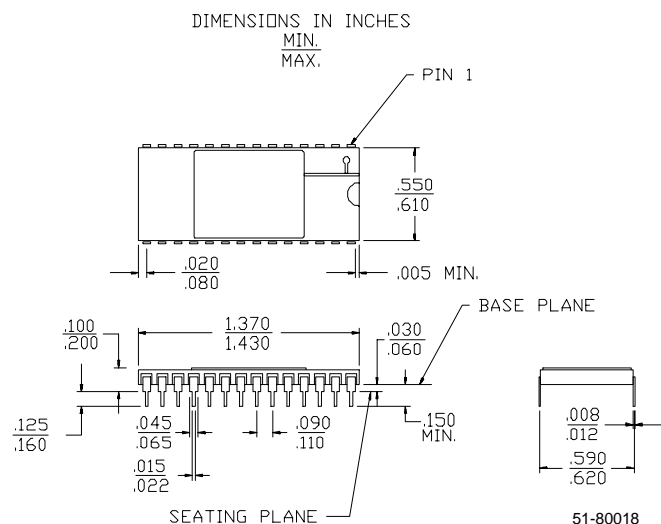
## 28-Lead (400-Mil) Sidebrazed DIP D41



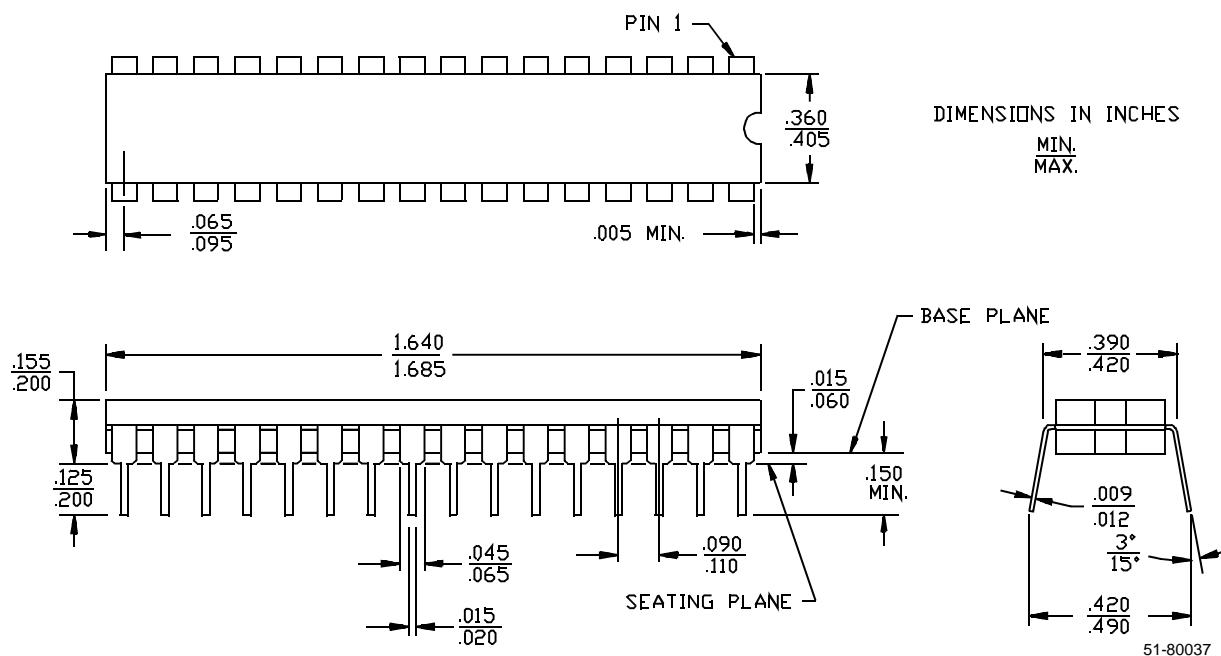
## 28-Lead (400-Mil) CerDIP D42



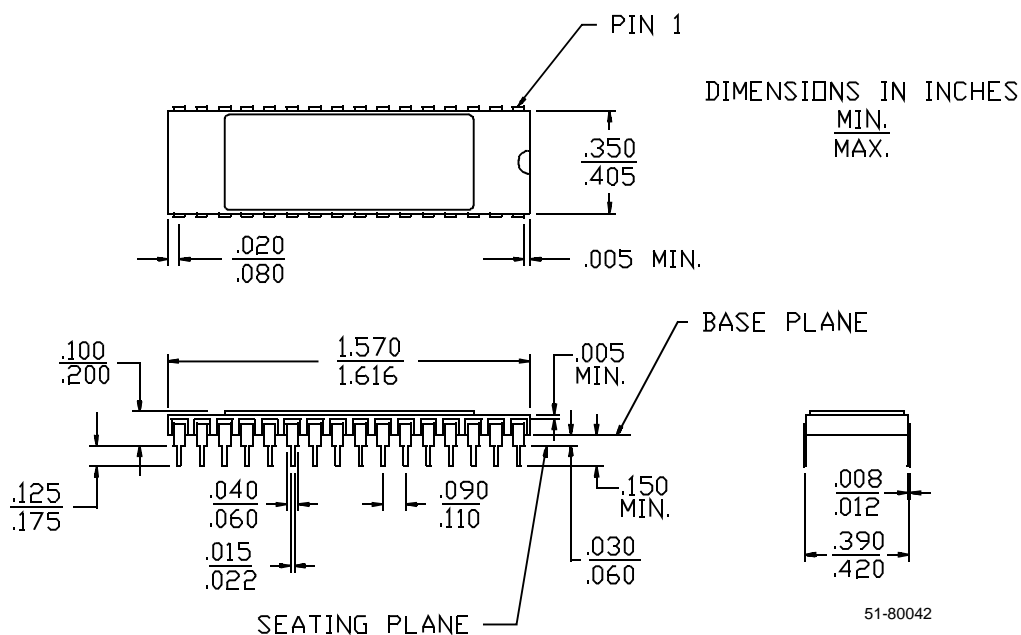
### 28-Lead (600-Mil) Sidebrazed DIP D43



### 32-Lead (400-Mil) CerDIP D44



**32-Lead (400-Mil) Sidebrazed DIP D46**



**32-Lead (600-Mil) Sidebrazed DIP D50**

