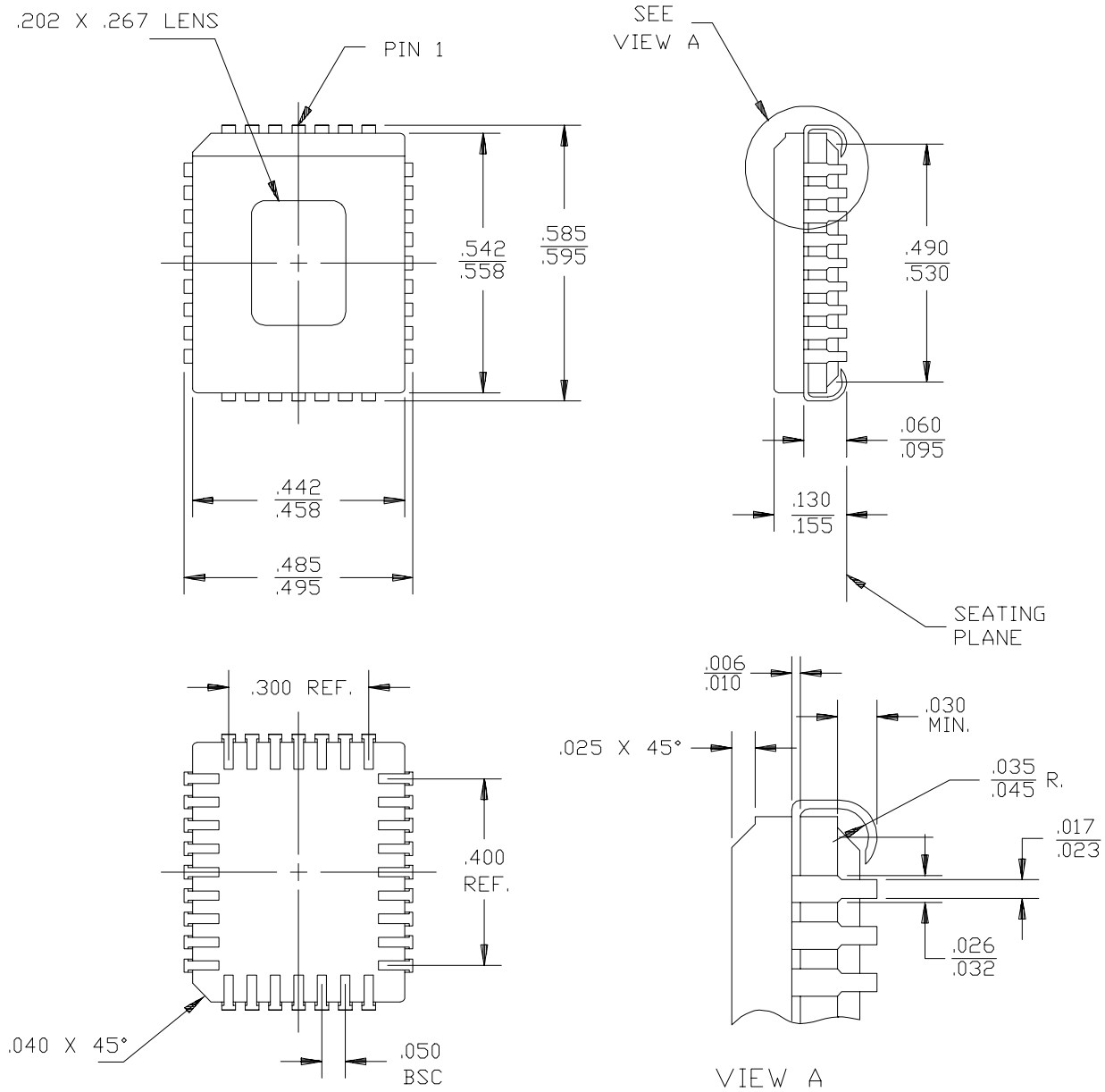
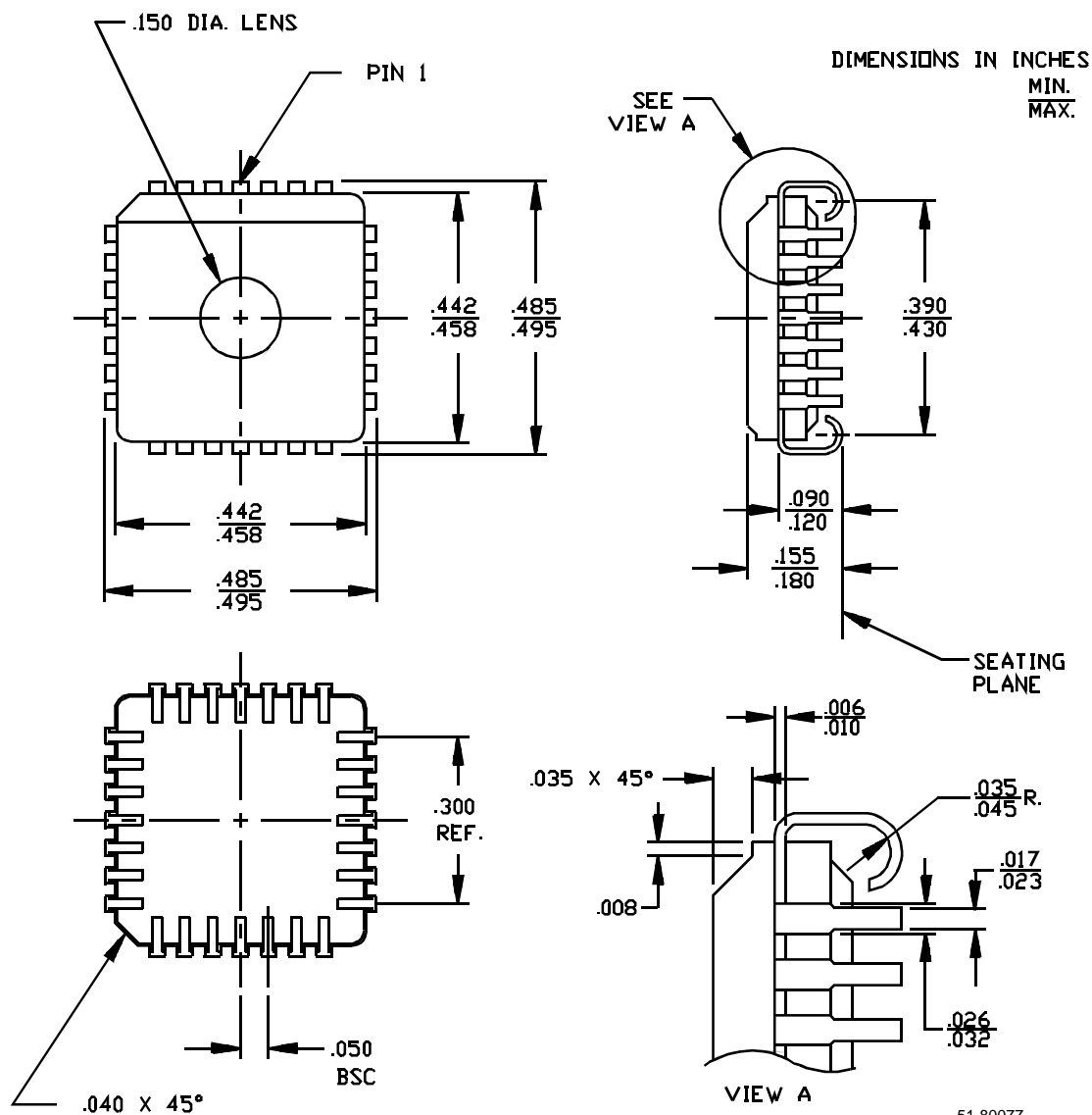


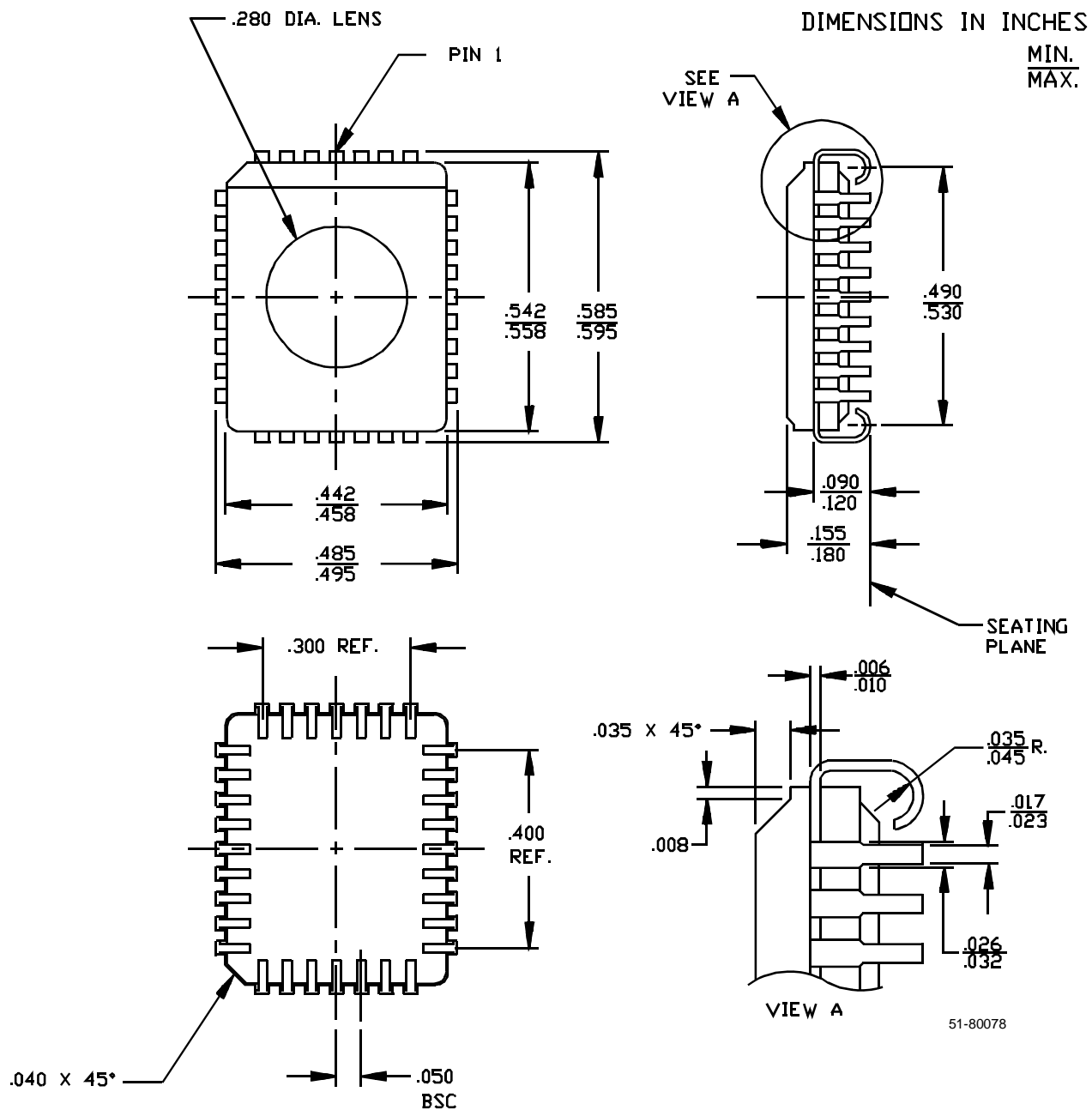
Ceramic Windowed J-Leaded Chip Carriers
32-Pin Windowed Leaded Chip Carrier H32


28-Pin Windowed Leaded Chip Carrier H64

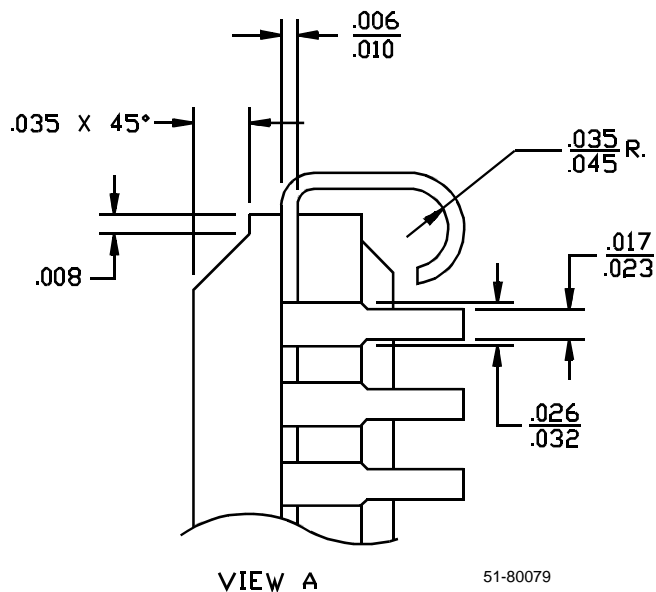
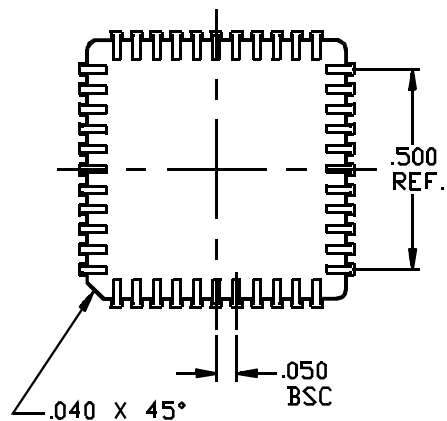
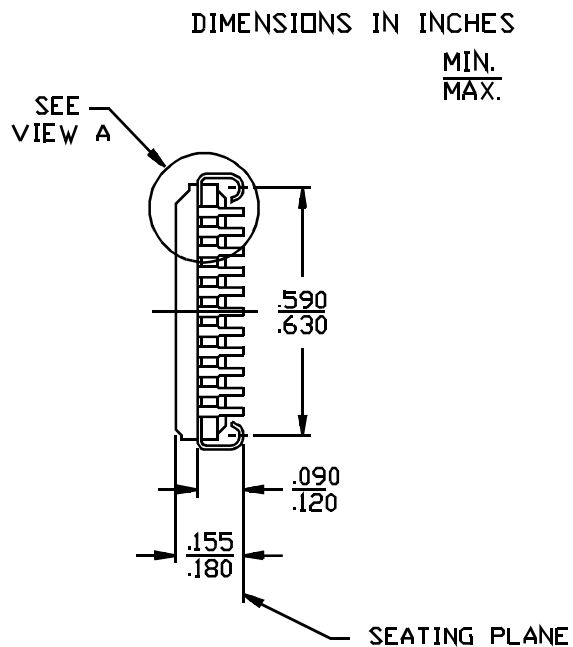
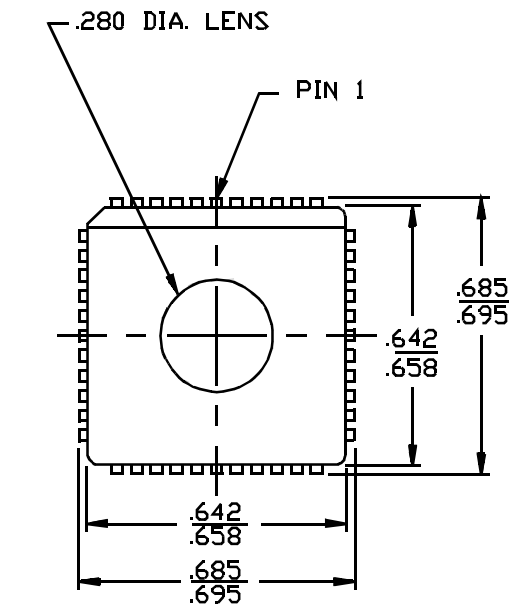


51-80077

32-Pin Windowed Leaded Chip Carrier H65

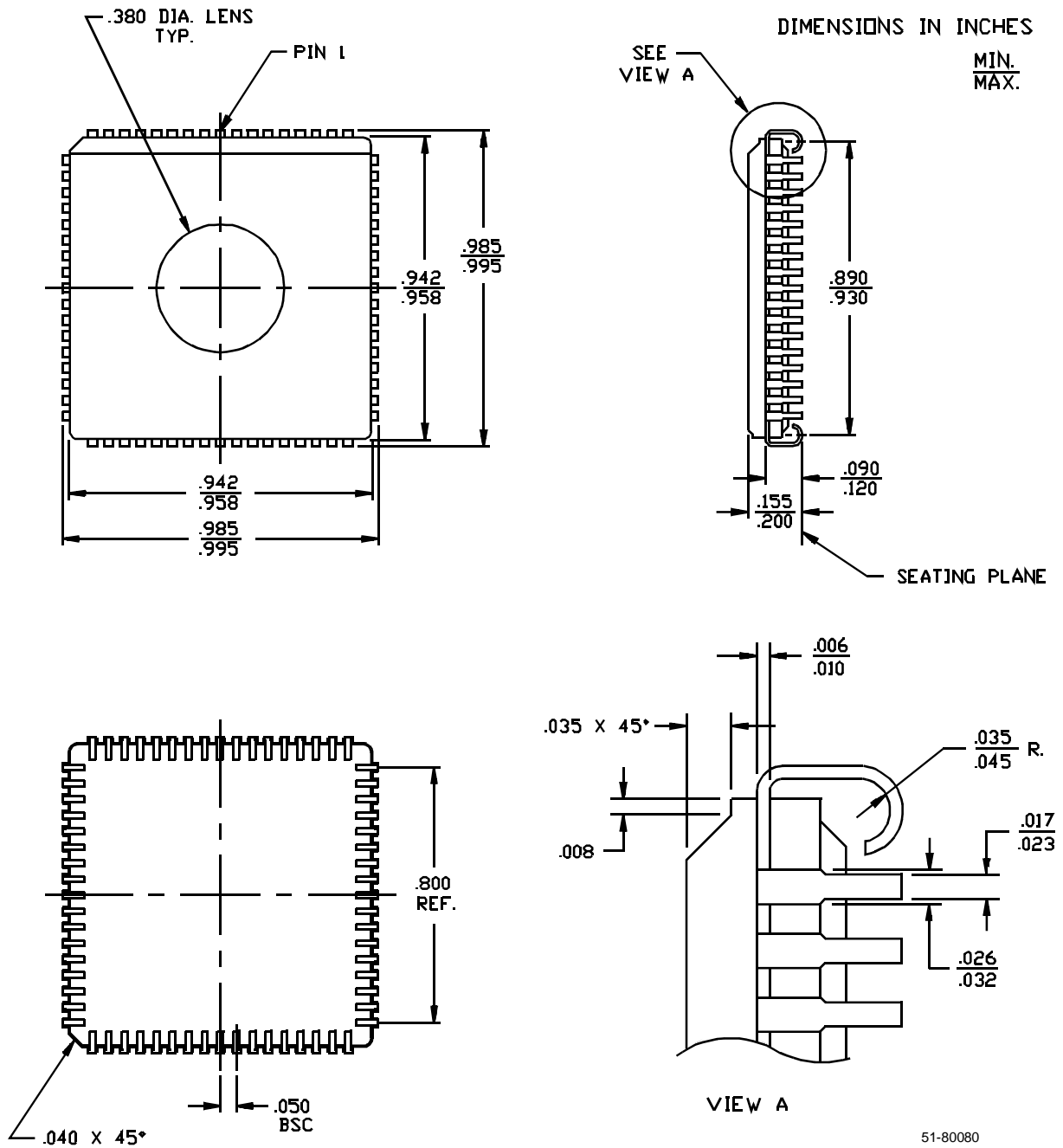


44-Pin Windowed Leaded Chip Carrier H67



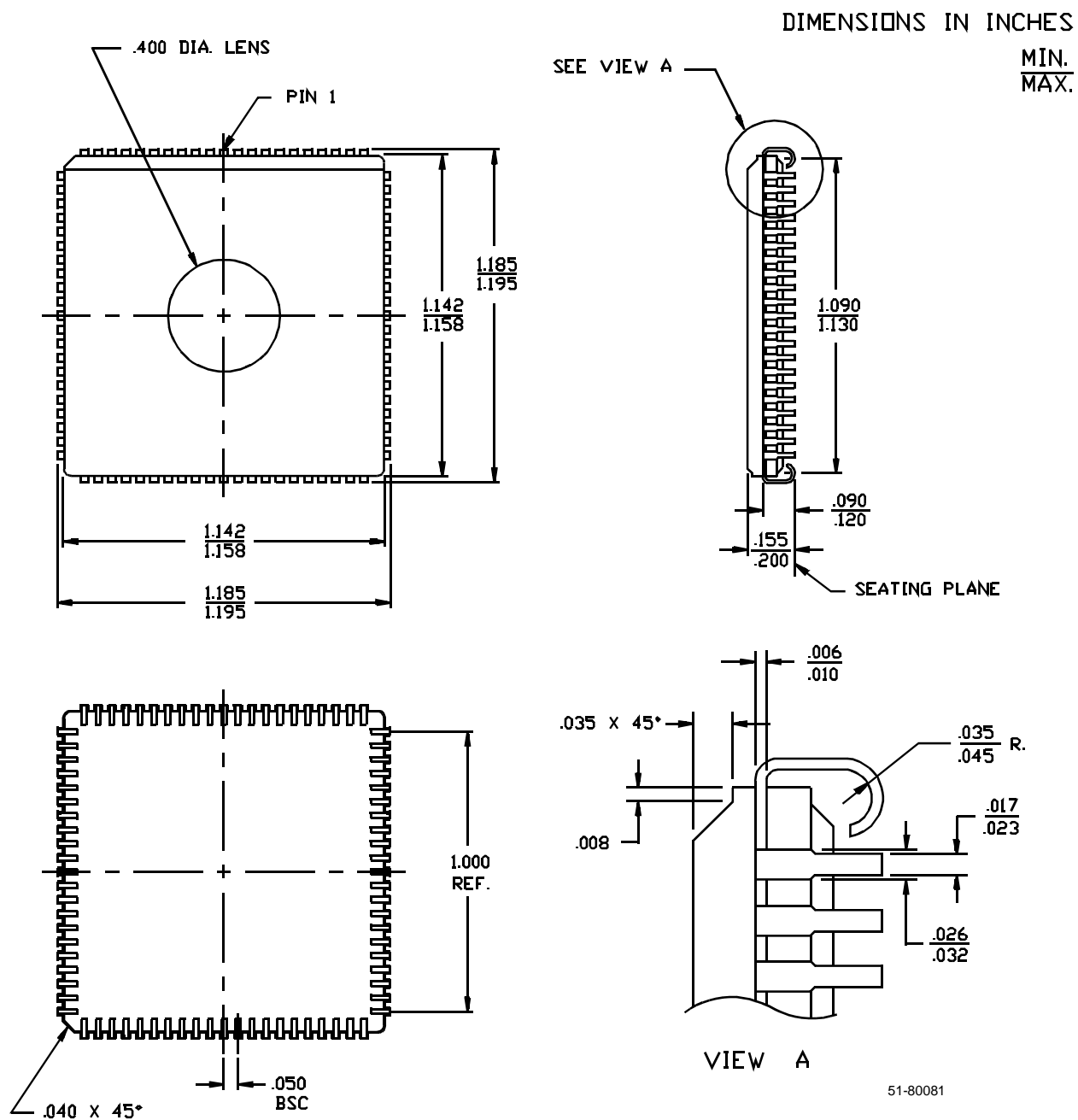
51-80079

68-Pin Windowed Leaded Chip Carrier H81



51-80080

84-Leaded Windowed Leaded Chip Carrier H84



51-80081