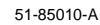




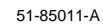
16-Lead (300-Mil) Molded DIP P1



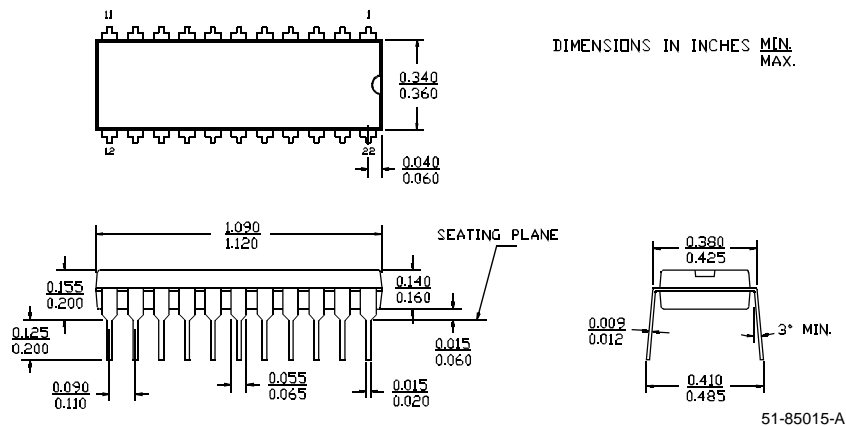
DIMENSIONS IN INCHES MIN.
 MAX.



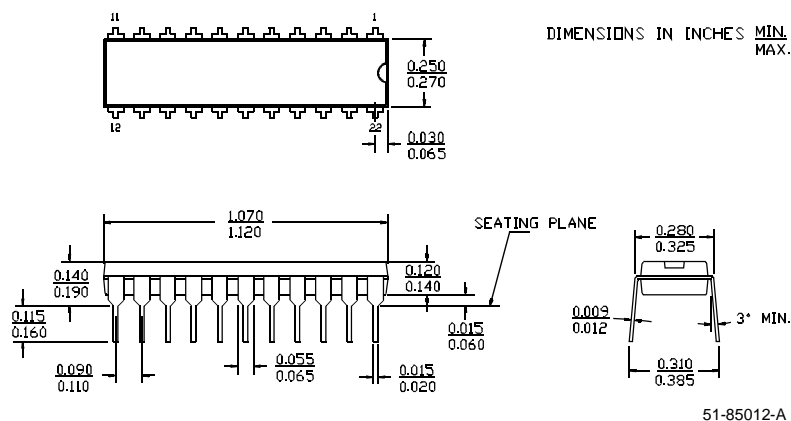
DIMENSIONS IN INCHES MIN.
 MAX.



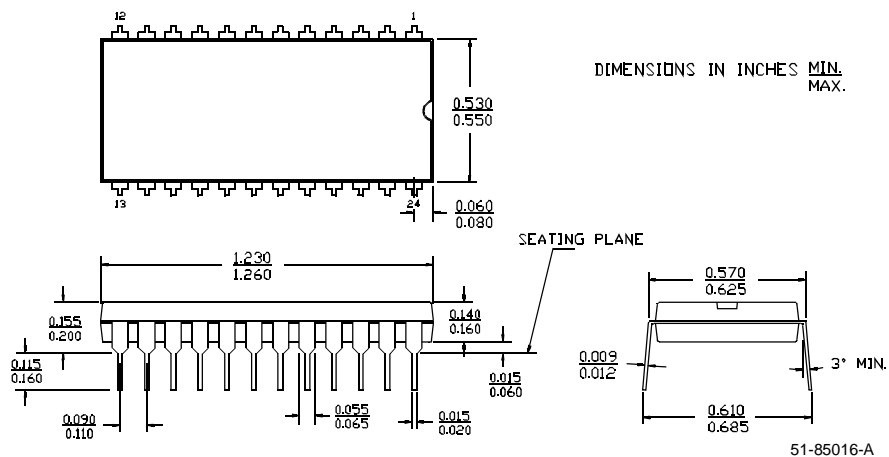
22-Lead (400-Mil) Molded DIP P7



22-Lead (300-Mil) Molded DIP P9

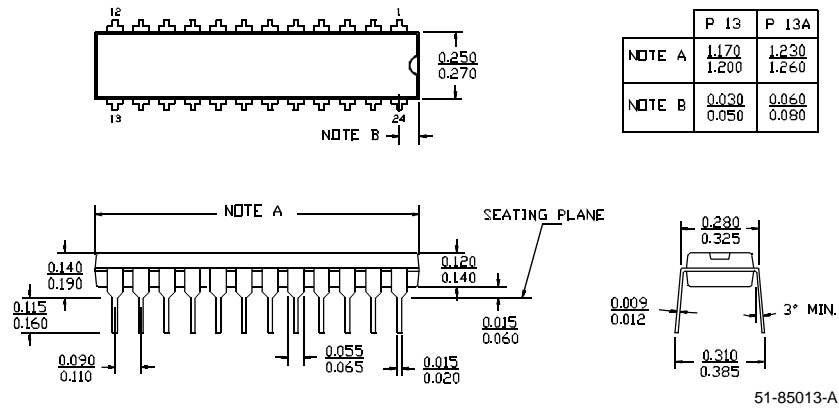


24-Lead (600-Mil) Molded DIP P11



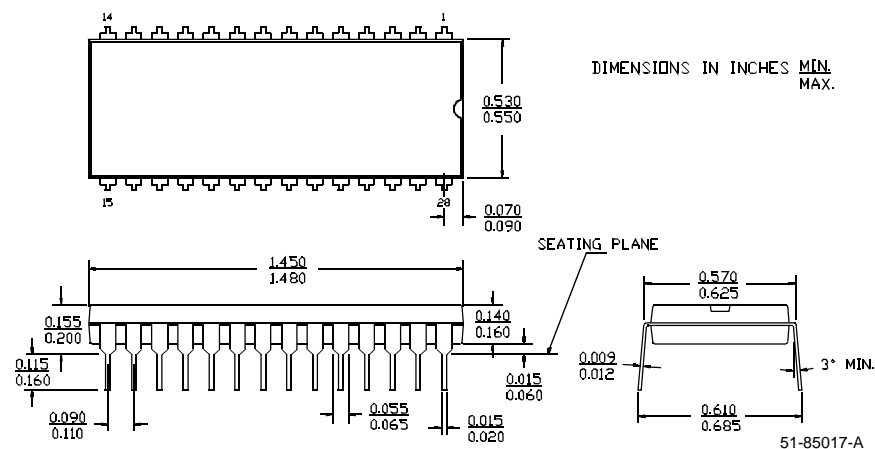
24-Lead (300-Mil) Molded DIP P13/P13A

DIMENSIONS IN INCHES MIN.
MAX.



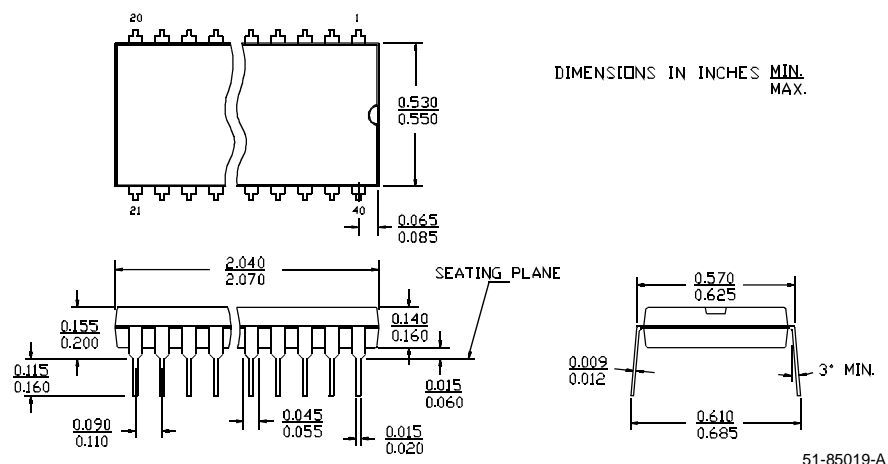
28-Lead (600-Mil) Molded DIP P15

DIMENSIONS IN INCHES MIN.
MAX.



40-Lead (600-Mil) Molded DIP P17

DIMENSIONS IN INCHES MIN.
MAX.





Technical drawing of a 16-pin D-subminiature connector. The drawing includes three views: a top view, a side view, and a cross-sectional view. The top view shows a rectangular body with 16 pins on the top edge and 16 pins on the bottom edge. Dimensions include a total width of 1.650 inches (1.680 inches including mounting tabs), a pin pitch of .155 inches, and a pin diameter of .020 inches. The side view shows a height of .530 inches (max .570 inches) and a pin height of .070 inches (max .095 inches). The cross-sectional view shows a pin diameter of .020 inches, a pin height of .015 inches, and a seating plane. The drawing is labeled '51-85018-A'.

DIMENSIONS IN INCHES
MIN.
MAX.

14

15

28

0.260
0.280

0.030
0.080

SEATING PLANE

1.370
1.425

0.140
0.190

0.120
0.140

0.015
0.060

0.009
0.012

3° MIN.

0.090
0.110

0.055
0.065

0.015
0.020

0.290
0.325

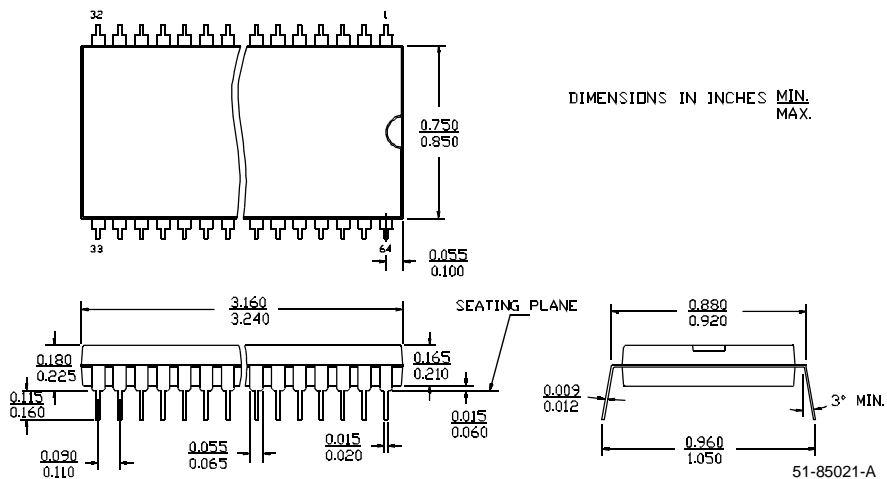
0.310
0.385

51-85014-B

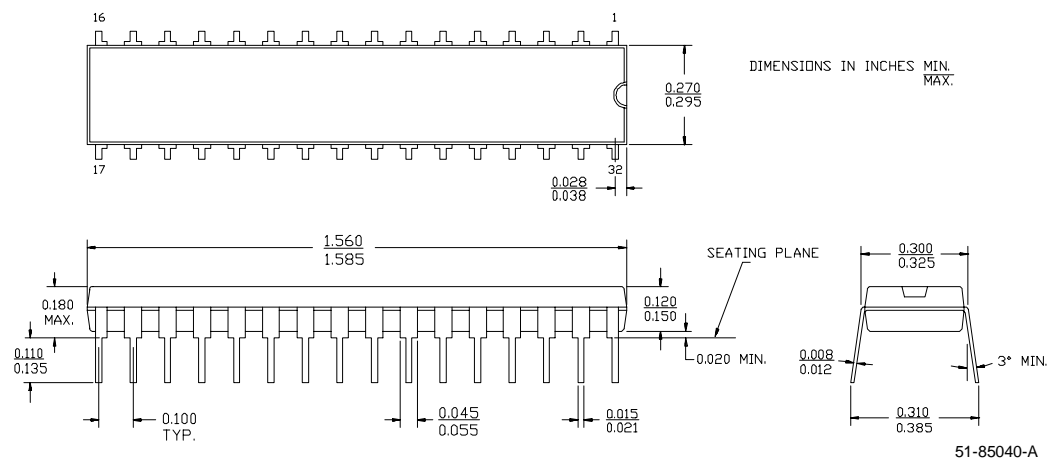
DIMENSIONS IN INCHES MIN. MAX.

24
20
1
48
0.530
0.550
0.065
0.085
2.420
2.460
0.165
0.210
0.115
0.150
0.090
0.110
0.045
0.055
0.015
0.020
0.150
0.170
0.015
0.050
SEATING PLANE
0.570
0.625
0.009
0.012
3° MIN.
0.600
0.700

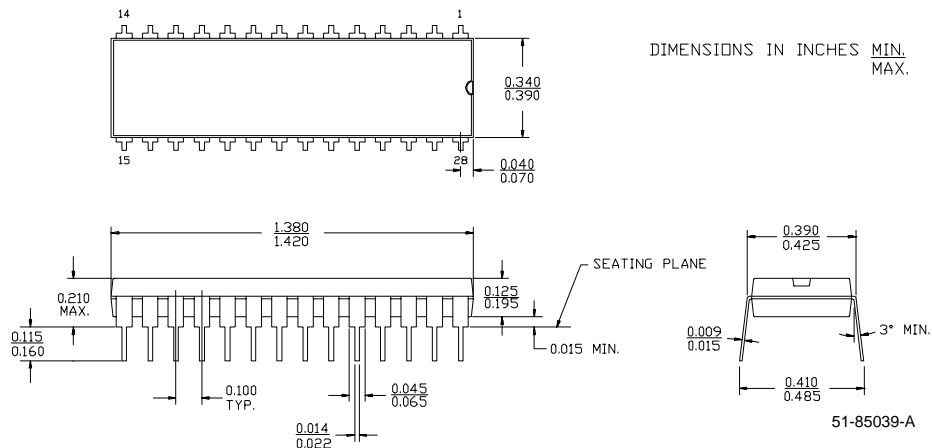
64-Lead (900-Mil) Molded DIP P29



32-Lead (300-Mil) Molded DIP P31



28-Lead (400-Mil) Molded DIP P41



32-Lead (400-Mil) Molded DIP P43

