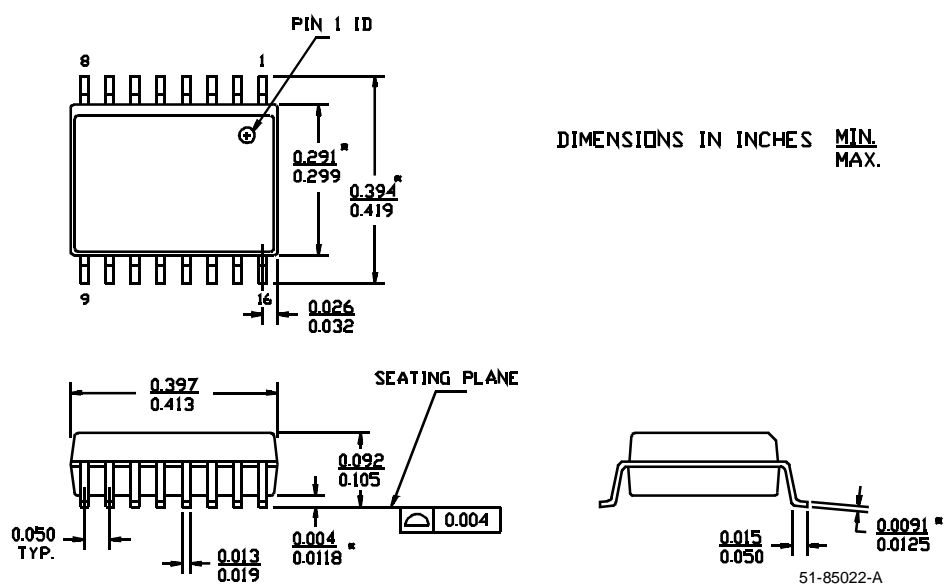
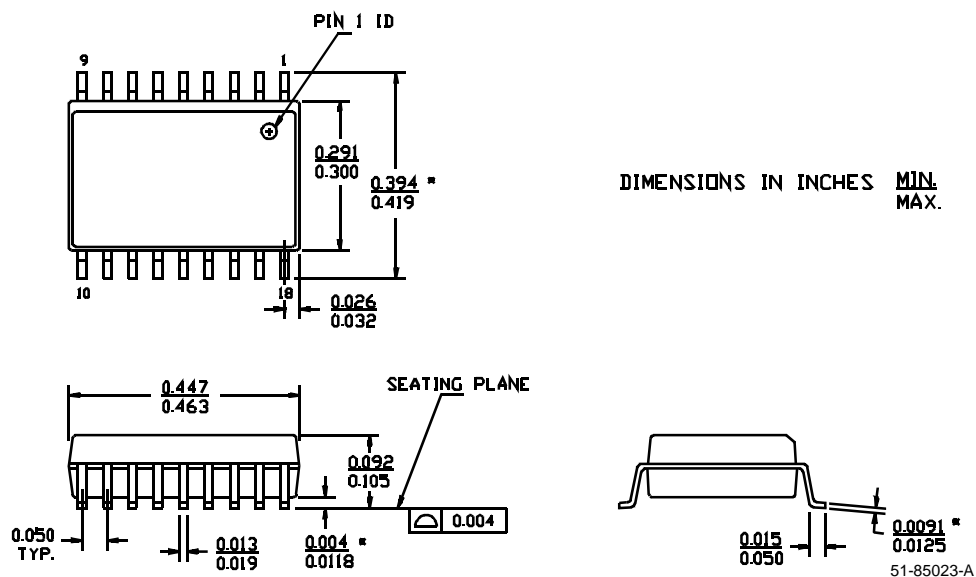


Plastic Small Outline ICs

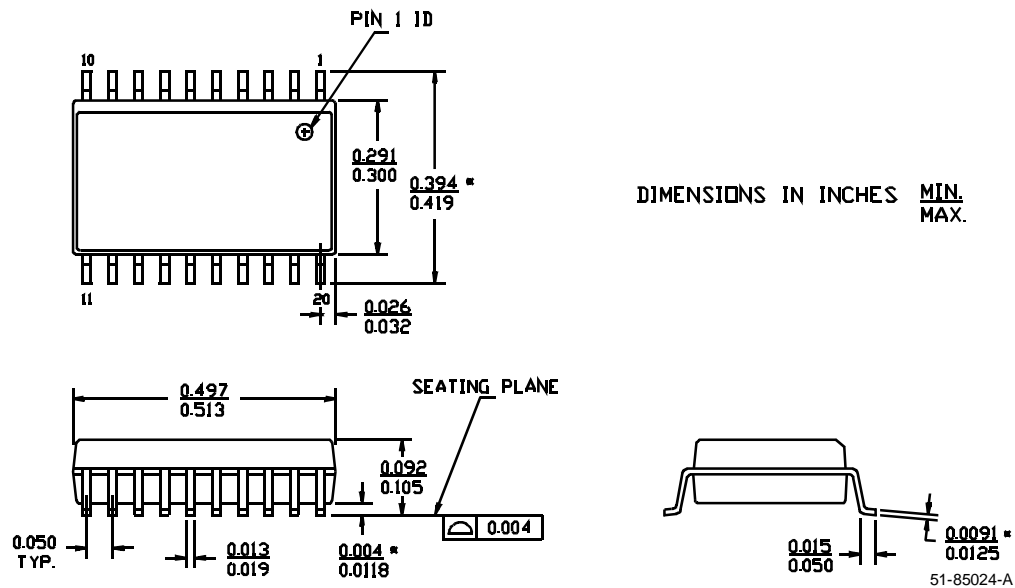
16-Lead (300-Mil) Molded SOIC S1



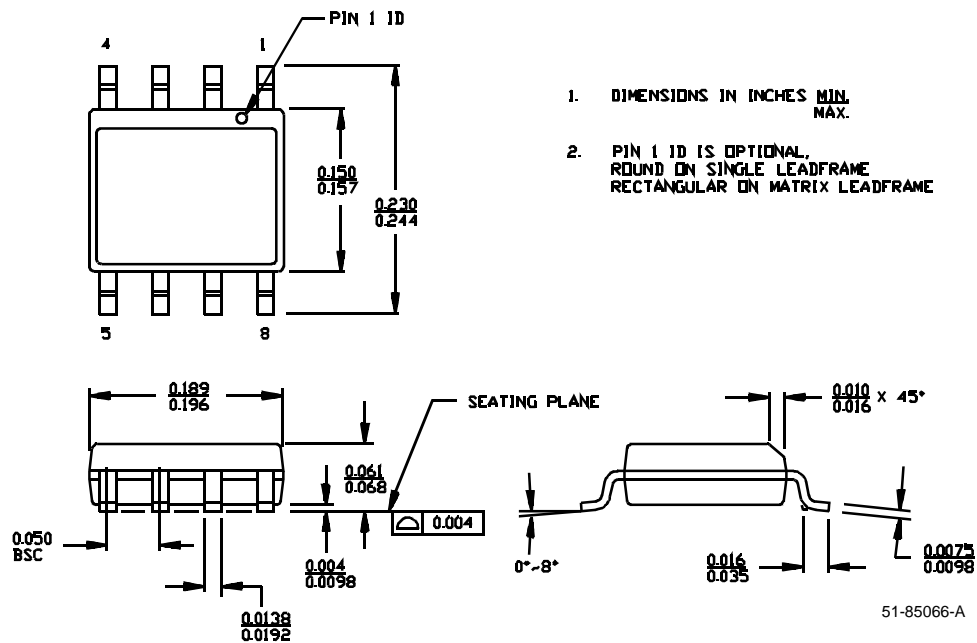
18-Lead (300-Mil) Molded SOIC S3



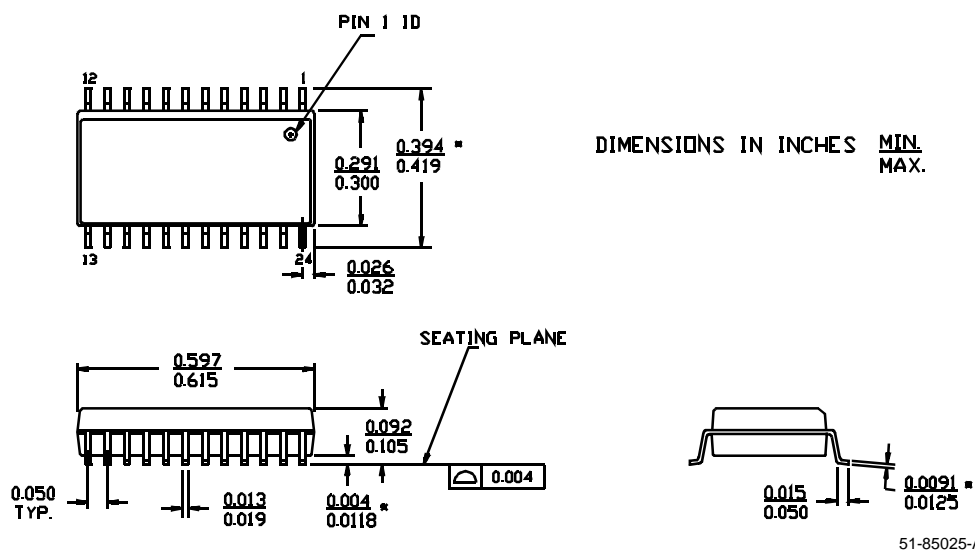
20-Lead (300-Mil) Molded SOIC S5



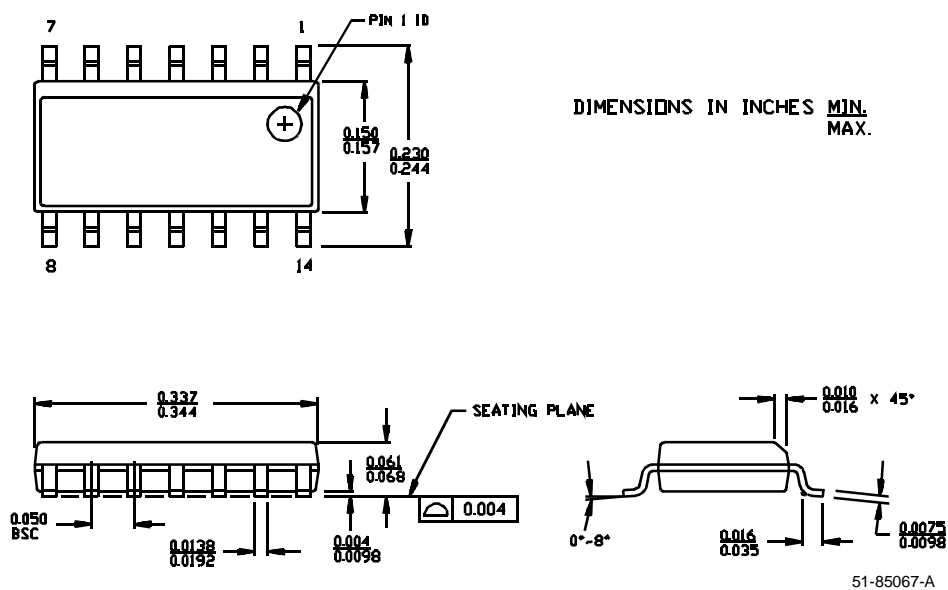
8-Lead (150-Mil) SOIC S8



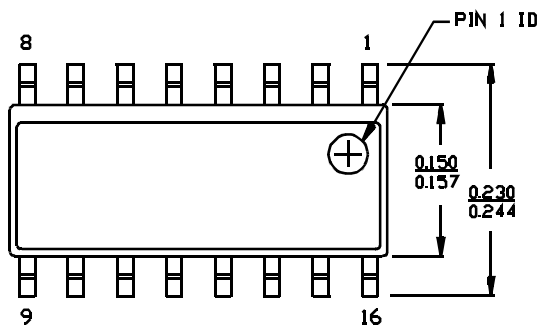
24-Lead (300-Mil) Molded SOIC S13



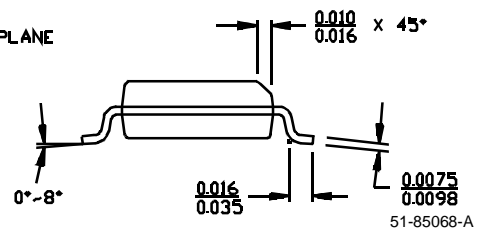
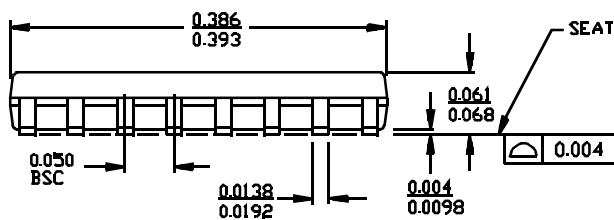
14-Lead (150-Mil) SOIC S14



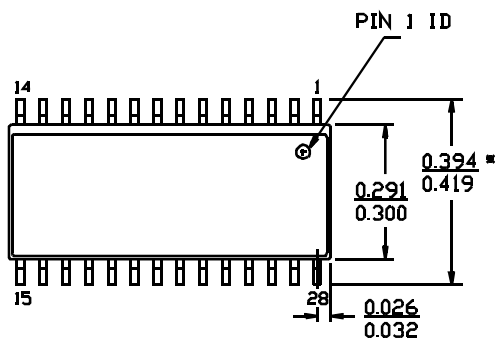
16-Lead (150-Mil) Molded SOIC S16



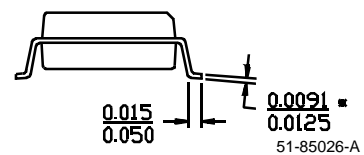
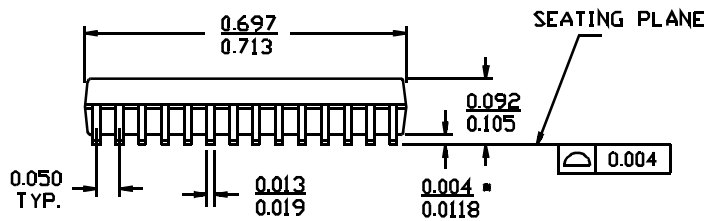
DIMENSIONS IN INCHES MIN.
MAX.



28-Lead (300-Mil) Molded SOIC S21



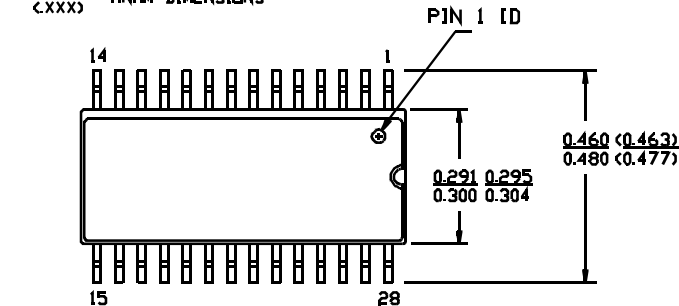
DIMENSIONS IN INCHES MIN.
MAX.



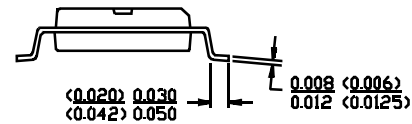
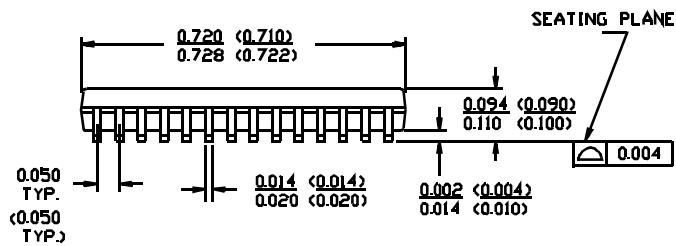
28-Lead 450-Mil (300-Mil Body Width) SOIC S22

.XXX = HYUNDAI DIMENSIONS
.XXX

(.XXX) = ANAM DIMENSIONS
(.XXX)

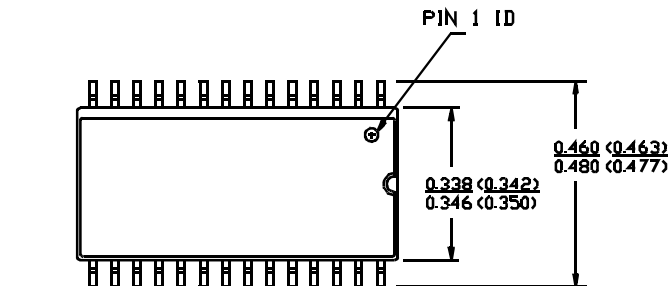


DIMENSIONS IN INCHES MIN.
MAX.



51-85073-A

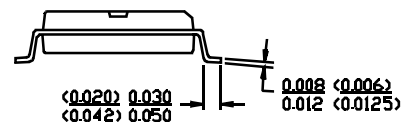
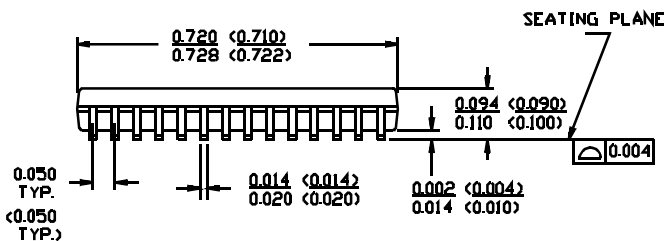
28-Lead (330-Mil) SOIC S23



DIMENSIONS IN INCHES MIN.
MAX.

.XXX = HYUNDAI DIMENSIONS
.XXX

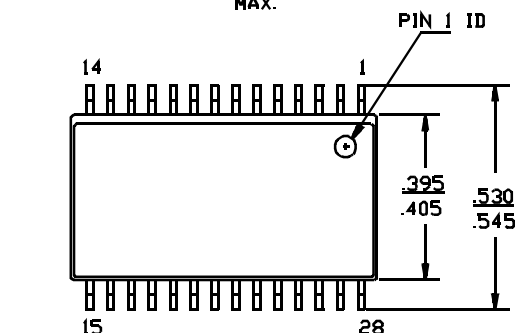
(.XXX) = ANAM DIMENSIONS
(.XXX)



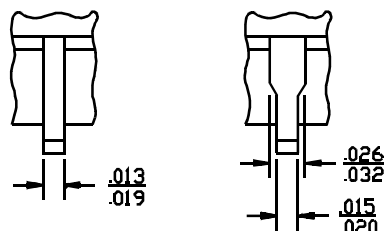
51-85058

28-Lead (400-Mil) Molded SOIC S28

DIMENSIONS IN INCHES MIN.
MAX.

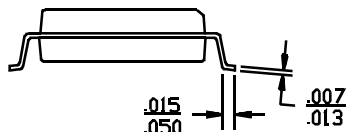
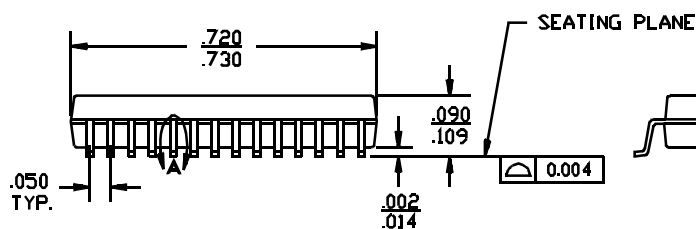


DETAIL A EXTERNAL LEAD DESIGN



OPTION 1

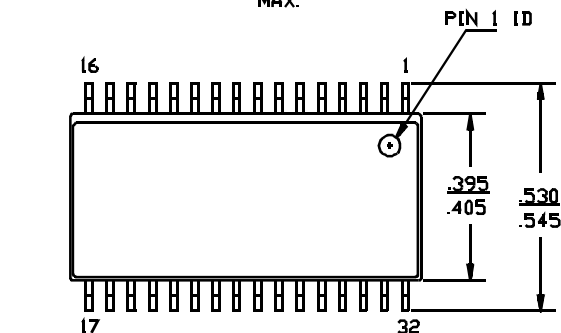
OPTION 2



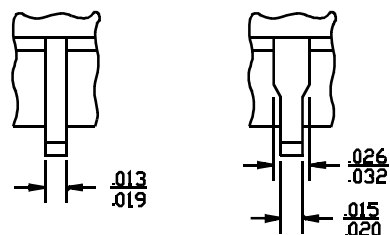
51-85027-A

32-Lead (400-Mil) Molded SOIC S33

DIMENSIONS IN INCHES MIN.
MAX.

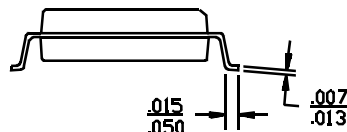
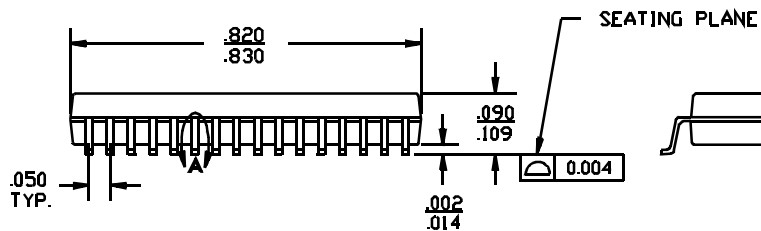


DETAIL A EXTERNAL LEAD DESIGN



OPTION 1

OPTION 2



51-85028-A

32-Lead (450 MIL) Molded SOIC S34

