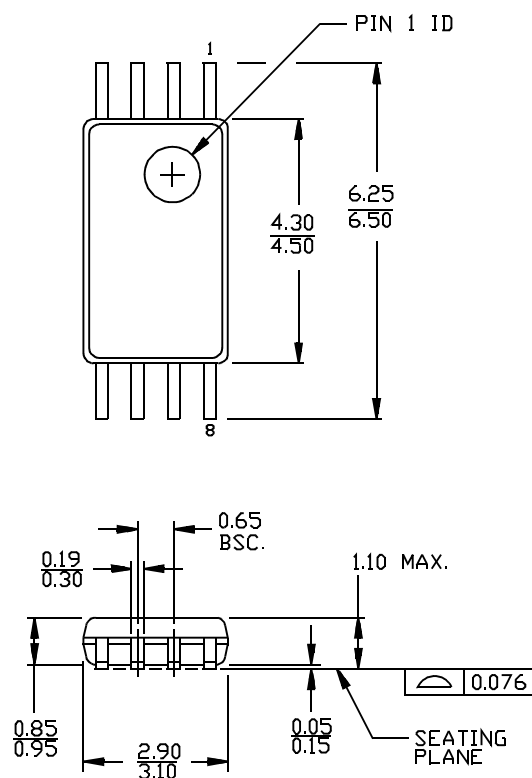


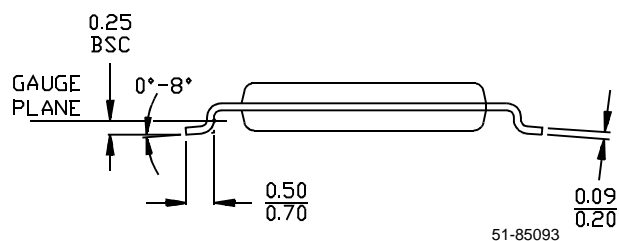
## Thin Small Outline Packages

### 8-Lead Thin Shrunk Small Outline Package (4.40 MM Body) Z8



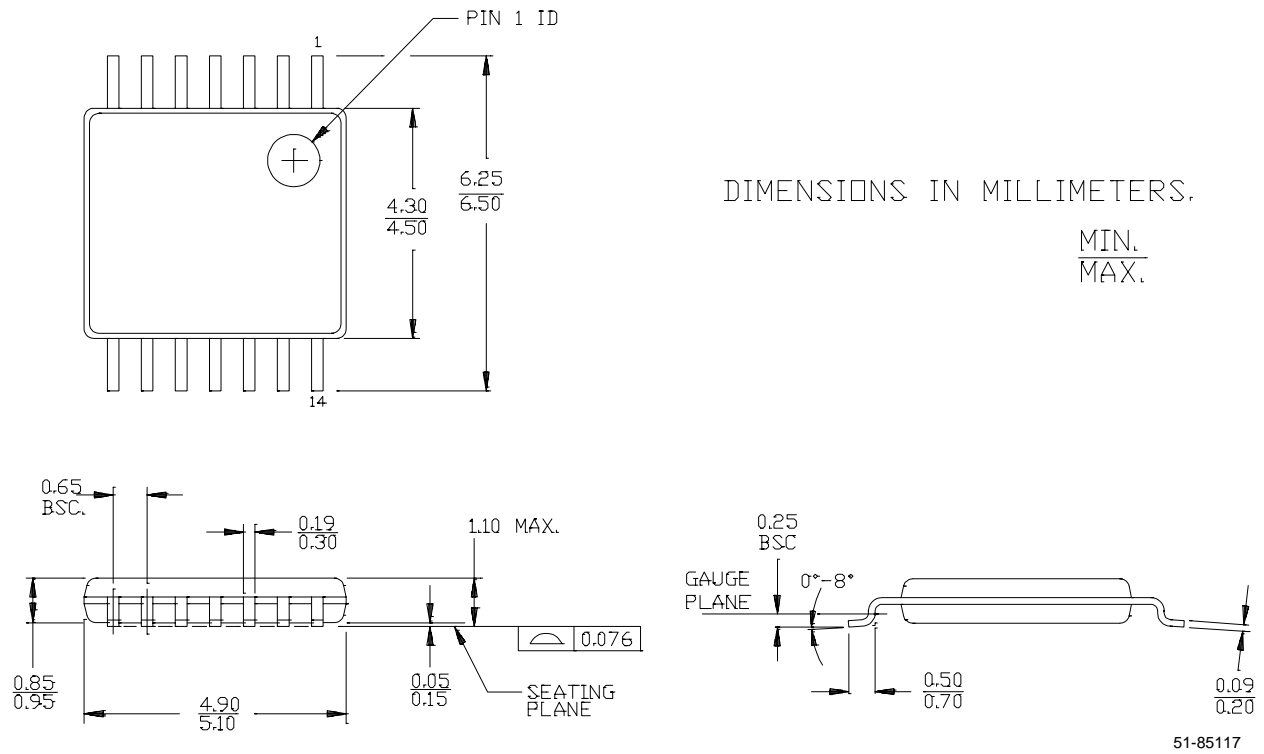
DIMENSIONS IN MILLIMETERS.

MIN.  
MAX.

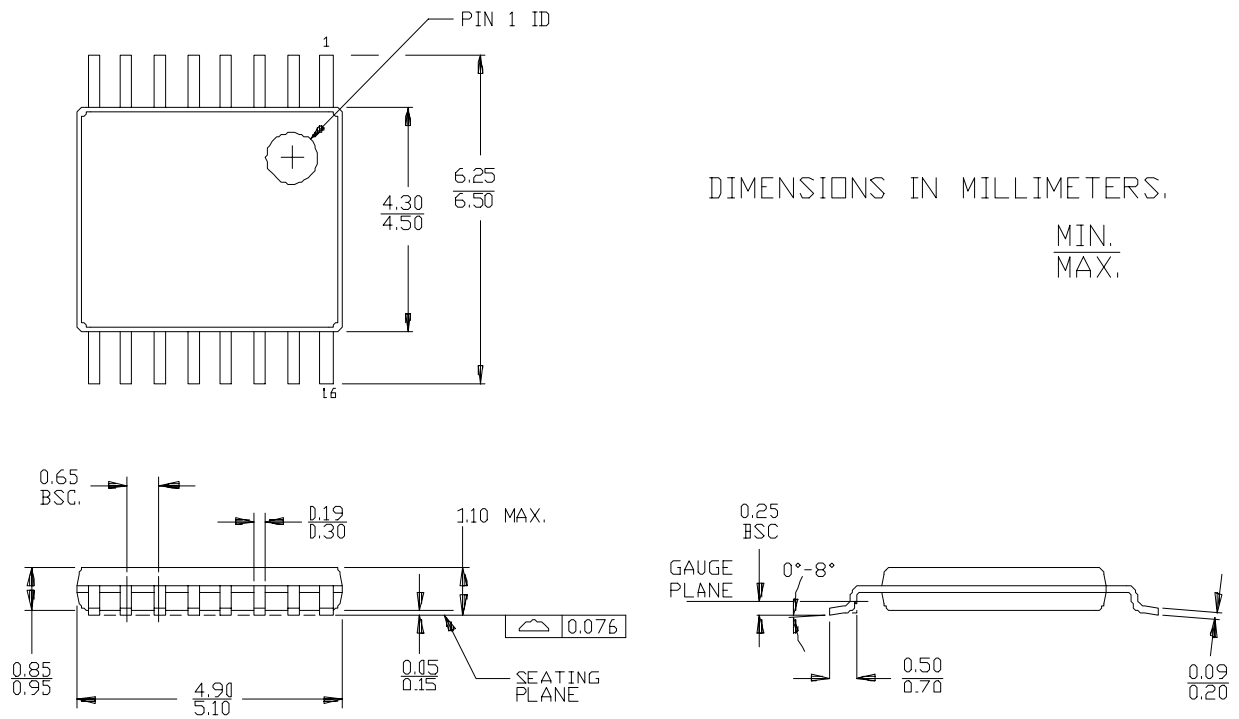


51-85093

## 14-Lead Thin Shrunk Small Outline Package (4.40-mm Body) Z14

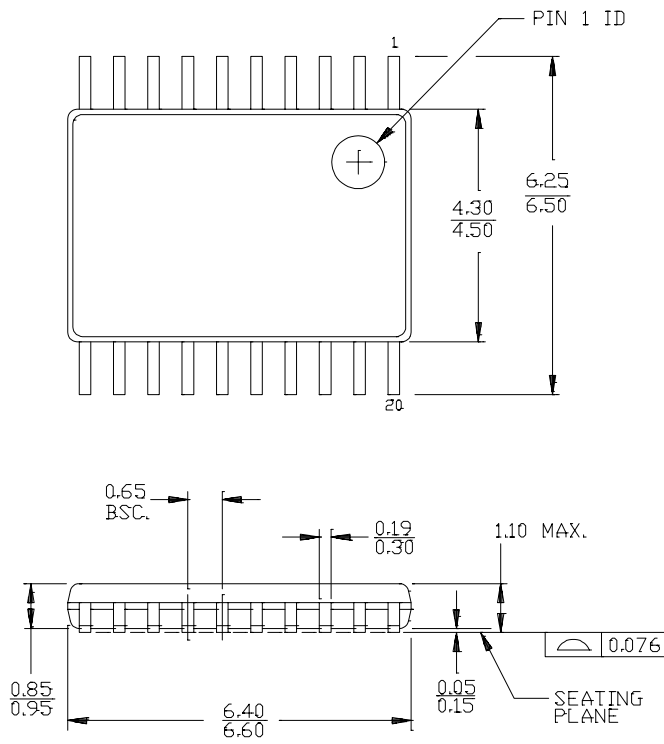


## 16-Lead Thin Shrunk Small Outline Package (4.40 MM Body) Z16



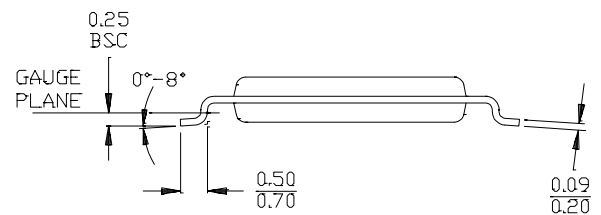
51-85091

## 20-Lead Thin Shrunk Small Outline Package (4.40-mm Body) Z20



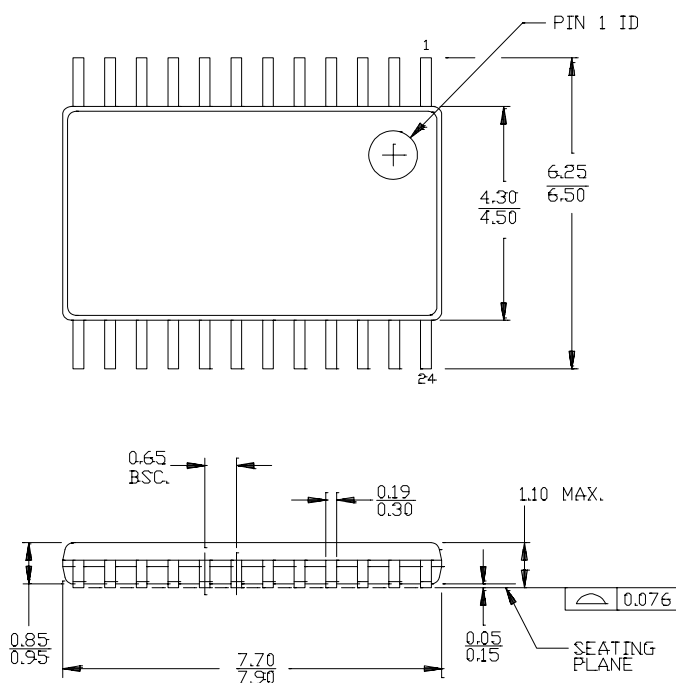
DIMENSIONS IN MILLIMETERS.

MIN.  
MAX.



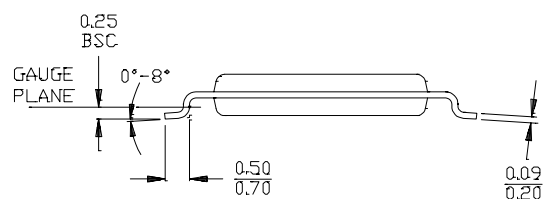
51-85118

## 24-Lead Thin Shrunk Small Outline Package (4.40-mm Body) Z24



DIMENSIONS IN MILLIMETERS.

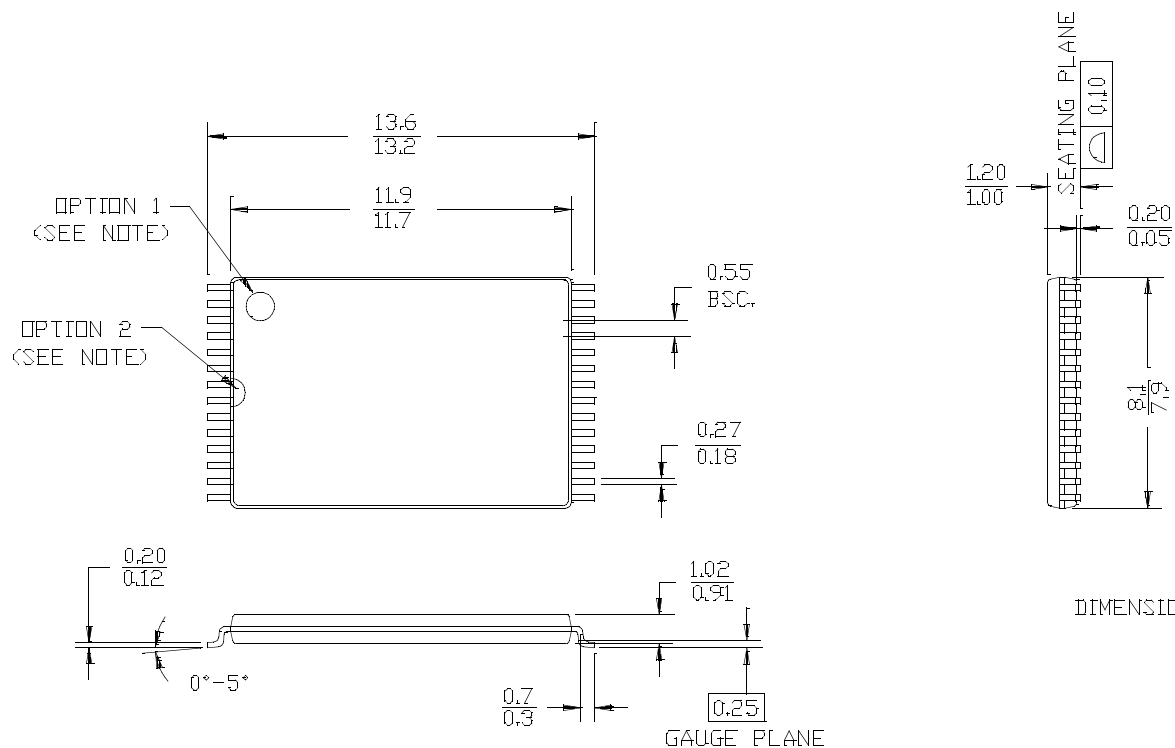
MIN.  
MAX.



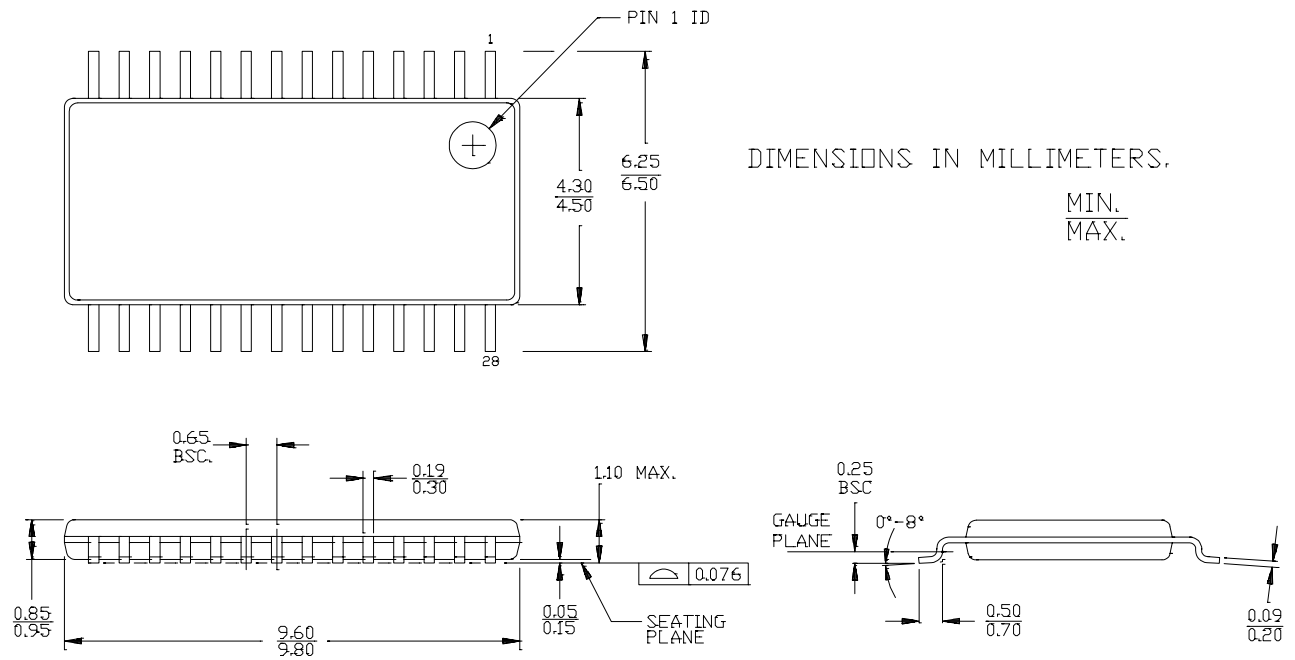
51-85119

## 28-Lead Thin Small Outline Package Type 1 (8x13.4 mm) Z28

NOTE: ORIENTATION I.D. MAY BE LOCATED EITHER  
AS SHOWN IN OPTION 1 OR OPTION 2

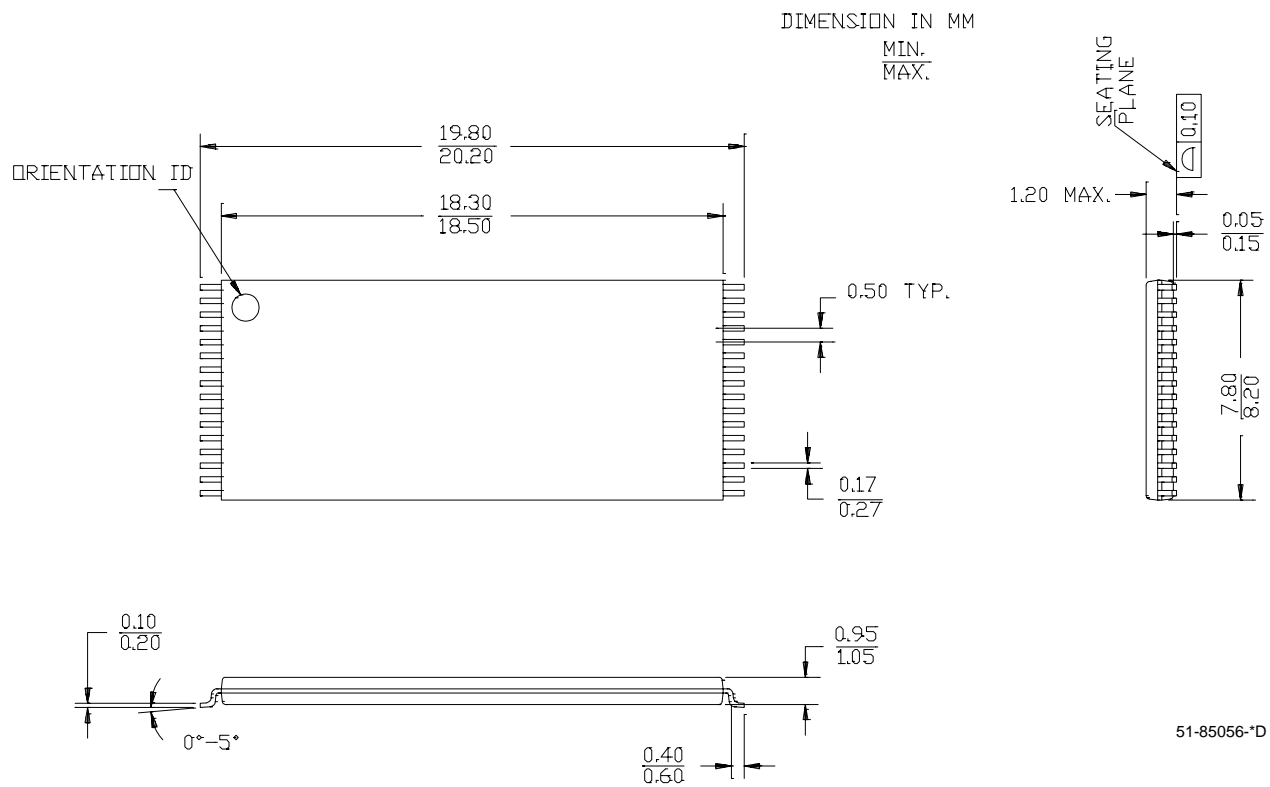


## 28-Lead Thin Shrunk Small Outline Package (4.40-mm Body) Z29



51-85120

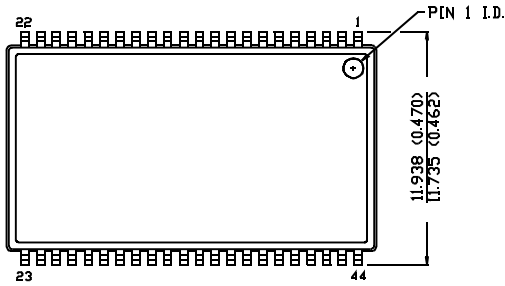
## 32-Lead Thin Small Outline Package Type I (8x20 mm) Z32



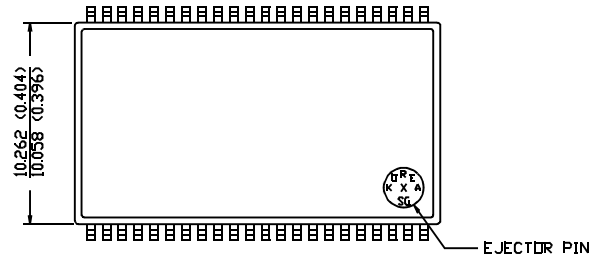


## 44-Pin TSOP II Z44

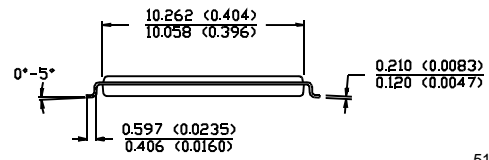
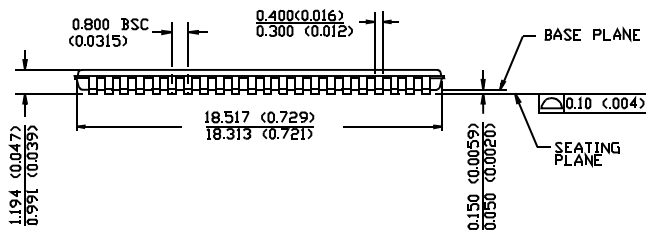
DIMENSION IN MM (INCH)  
MAX  
MIN.



TOP VIEW

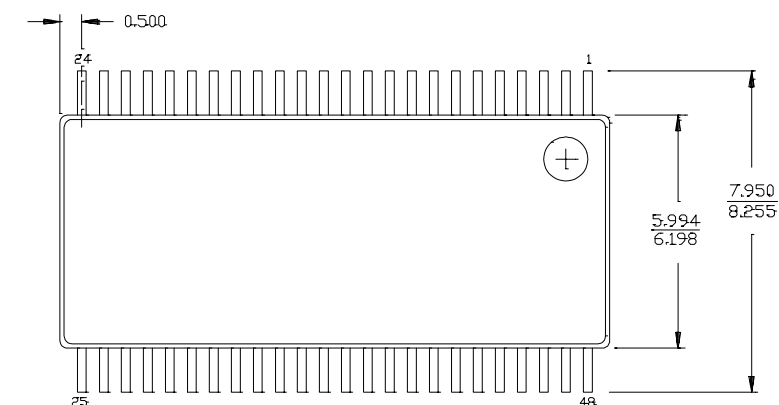


BOTTOM VIEW

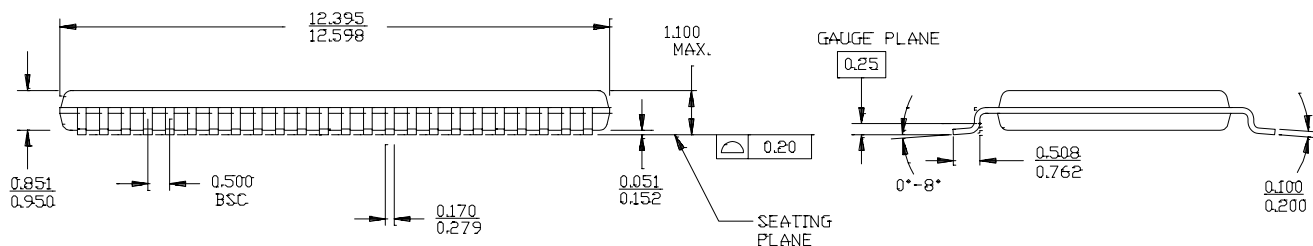


51-85087-A

## 48-Lead Thin Shrink Small Outline Package, Type II (6 mm x 12 mm) Z48

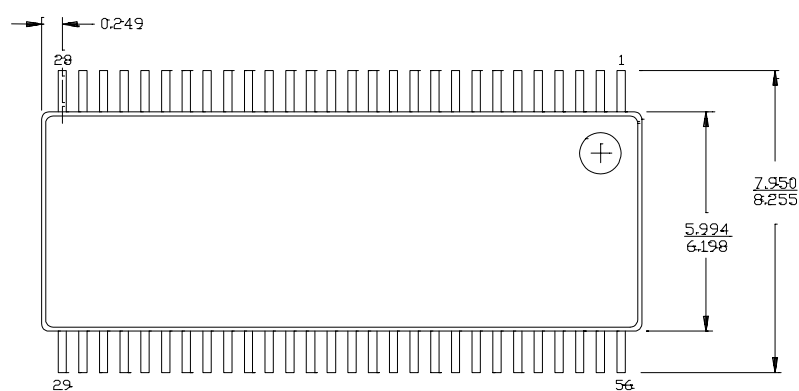


DIMENSIONS IN MM MIN.  
MAX.

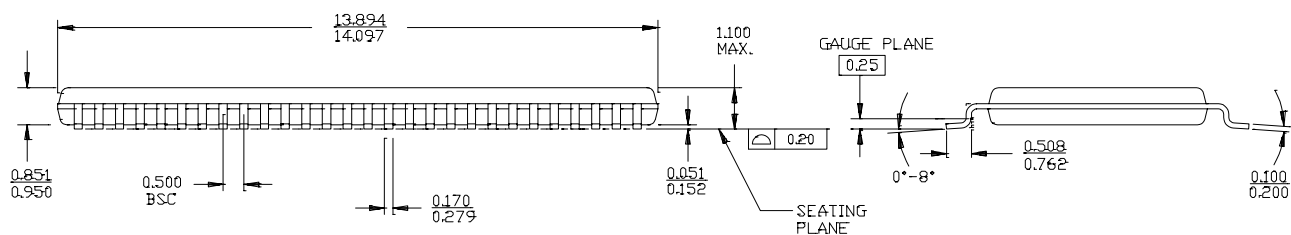


51-85059-B

## 56-Lead Thin Shrink Small Outline Package, Type II (6 mm x 12 mm) Z56



DIMENSIONS IN MM MIN.  
MAX.



51-85060-B