

# SYNCHRONOUS BURST SRAM PIPELINED OUTPUT

## 64K x 64 SRAM

**+3.3V SUPPLY, FULLY REGISTERED  
INPUTS AND OUTPUTS, BURST COUNTER**

### FEATURES

- Fast access times: 5, 6, and 7ns
- Fast clock speed: 100, 83, and 66 MHz
- Provide high performance 3-1-1 access rate
- Fast OE# access times: 5, 6, and 7ns
- Optimal for depth expansion (one cycle chip deselect to eliminate bus contention)
- 3.3V -5% and +10% core power supply, 2.5V or 3.3V I/O supply
- 5V tolerant inputs except I/O's
- Clamp diodes to VSS at all inputs and outputs
- Common data inputs and data outputs
- BYTE WRITE ENABLE and GLOBAL WRITE control
- Four chip enables for depth expansion and one chip enable for address pipeline
- Address, control, input, and output pipeline registers
- Internally self-timed WRITE CYCLE
- Burst sequence control pins MODE (interleaved or linear burst sequence)
- Automatic power-down for portable applications
- ZZ pin for snooze control
- High density, high speed packages
- High 30pF output drive capability at rated access time
- 

### OPTIONS

- Timing
  - 5ns access/10ns cycle
  - 6ns access/12ns cycle
  - 7ns access/15ns cycle
- Package
  - 128-pin PQFP
  - 128-pin TQFP

### MARKING

-5  
-6  
-7  
  
Q  
T

### GENERAL DESCRIPTION

The Galvantech Synchronous Burst SRAM family employs high-speed, low power CMOS designs using advanced triple-layer polysilicon, double-layer metal technology. Each memory cell consists of four transistors and two high valued resistors.

The GVT7164D64 SRAM integrates 65,536x64 SRAM cells with advanced synchronous peripheral circuitry and a 2-bit counter for internal burst operation. All synchronous inputs are gated by registers controlled by a positive-edge-triggered clock input (CLK). The synchronous inputs include all addresses, all data inputs, address-pipelining chip enable (CE#), depth-expansion chip enables (CE2#, CE3#, CE2 and CE3), burst control inputs (ADSC#, ADSP#, and ADV#), write enables (BW1# to BW8#, and BWE#), and global write (GW#).

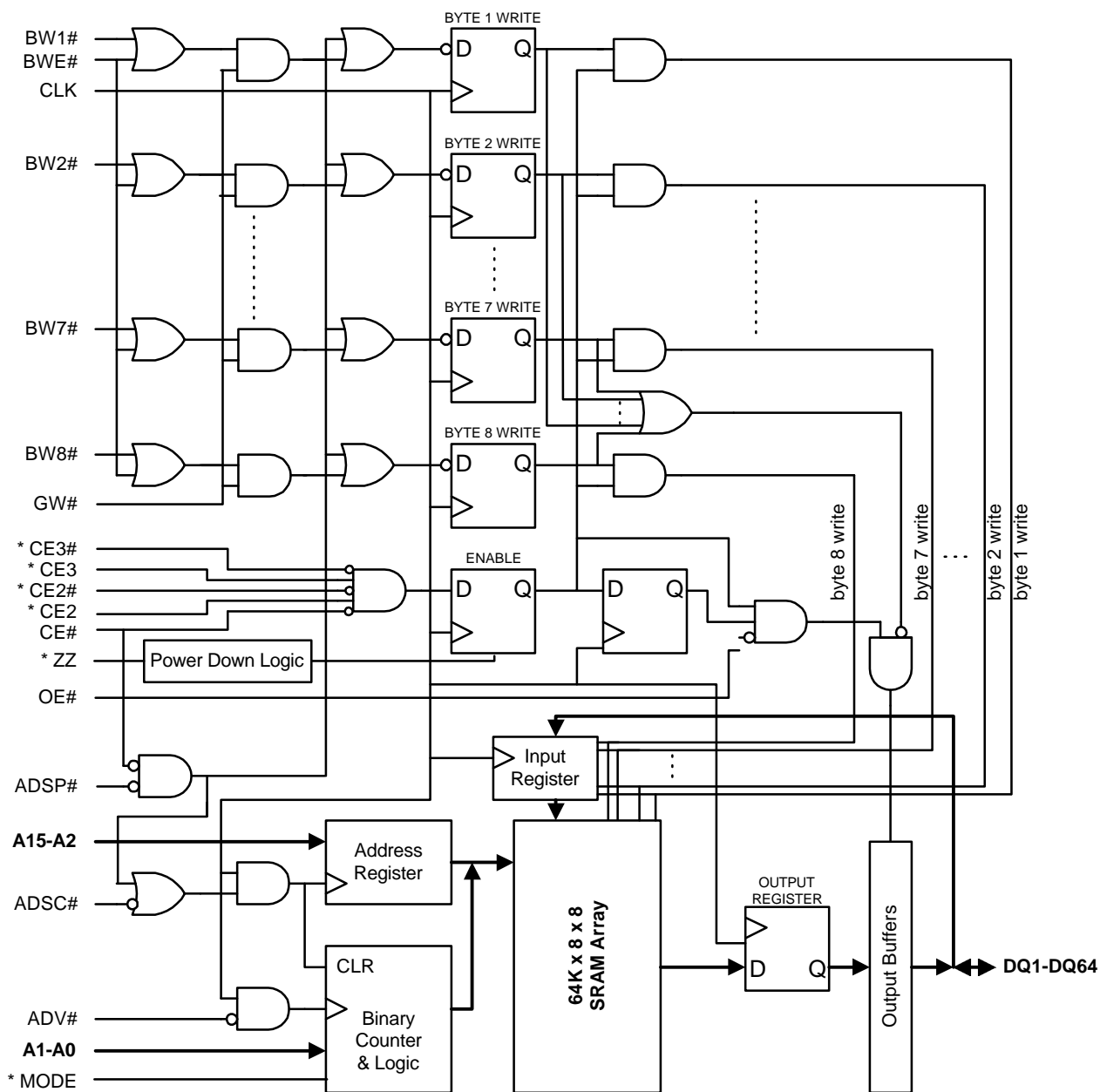
Asynchronous inputs include the output enable (OE#) and burst mode control (MODE). The data outputs (Q), enabled by OE#, are also asynchronous.

Addresses and chip enables are registered with either address status processor (ADSP#) or address status controller (ADSC#) input pins. Subsequent burst addresses can be internally generated as controlled by the burst advance pin (ADV#).

Address, data inputs, and write controls are registered on-chip to initiate self-timed WRITE cycle. WRITE cycles can be one to eight bytes wide as controlled by the write control inputs. Individual byte write allows individual byte to be written. BW1# controls DQ1-DQ8. BW2# controls DQ9-DQ16. BW3# controls DQ17-DQ24. BW4# controls DQ25-DQ32. BW5# controls DQ33-DQ40. BW6# controls DQ41-DQ48. BW7# controls DQ49-DQ56. BW8# controls DQ57-DQ64. BW1#, BW2#, BW3#, BW4#, BW5#, BW6#, BW7#, and BW8# can be active only with BWE# being LOW. GW# being LOW causes all bytes to be written.

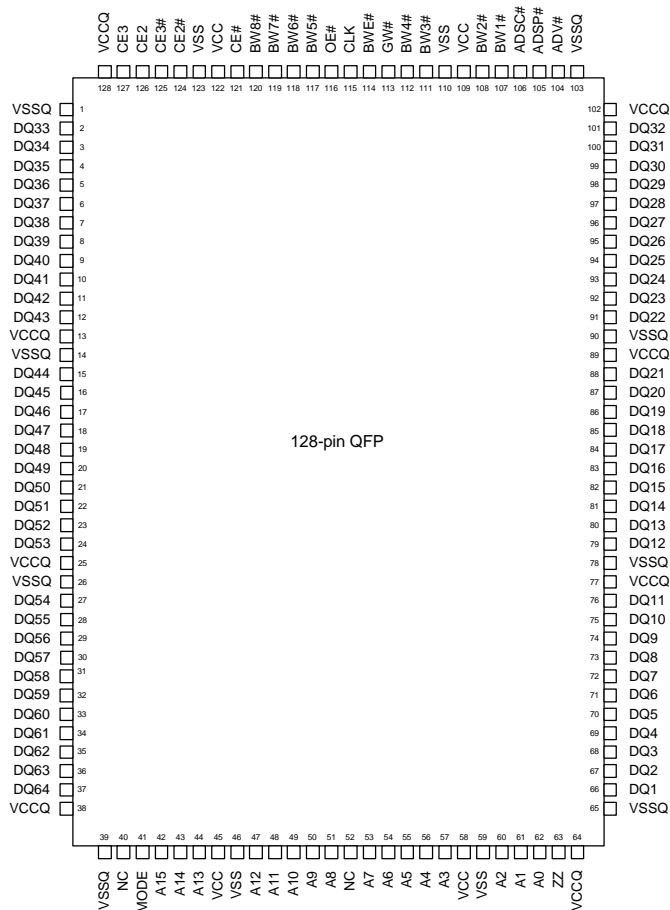
The GVT7164D64 operates from a +3.3V power supply. All inputs and outputs are TTL-compatible. The device is ideally suited for 486, Pentium™, 680x0, and PowerPC™ systems and for systems that are benefited from a wide synchronous data bus.

## FUNCTIONAL BLOCK DIAGRAM



**NOTE:** The Functional Block Diagram illustrates simplified device operation. See Truth Table, pin descriptions and timing diagrams for detailed information.

## PIN ASSIGNMENT (Top View)



## PIN DESCRIPTIONS

| GVT7164D64 PINS  | SYMBOL   | TYPE              | DESCRIPTION   |
|--|--|-------------------|---|
| 62, 61, 60, 57, 56, 55, 54, 53, 51, 50, 49, 48, 47, 44, 43, 42 | A0-A15   | Input-Synchronous | Addresses: These inputs are registered and must meet the setup and hold times around the rising edge of CLK. The burst counter generates internal addresses associated with A0 and A1, during burst cycle and wait cycle.   |
| 107, 108, 111, 112, 117, 118, 119, 120                         | BW1#, BW2#, BW3#, BW4#, BW5#, BW6#, BW7#, BW8# | Input-Synchronous | Byte Write: A byte write is LOW for a WRITE cycle and HIGH for a READ cycle. BW1# controls DQ1-DQ8. BW2# controls DQ9-DQ16. BW3# controls DQ17-DQ24. BW4# controls DQ25-DQ32. BW5# controls DQ33-DQ40. BW6# controls DQ41-DQ48. BW7# controls DQ49-DQ56. BW8# controls DQ57-DQ64. Data I/O are high impedance if either of these inputs are LOW, conditioned by BWE# being LOW. |
| 114  | BWE#   | Input-Synchronous | Write Enable: This active LOW input gates byte write operations and must meet the setup and hold times around the rising edge of CLK.   |
| 113  | GW#  | Input-Synchronous | Global Write: This active LOW input allows a full 64-bit WRITE to occur independent of the BWE# and BWn# lines and must meet the setup and hold times around the rising edge of CLK.  |
| 115  | CLK  | Input-Synchronous | Clock: This signal registers the addresses, data, chip enables, write control and burst control inputs on its rising edge. All synchronous inputs must meet setup and hold times around the clock's rising edge.  |
| 121  | CE#  | Input-Synchronous | Chip Enable: This active LOW input is used to enable the device and to gate ADSP#.  |

## PIN DESCRIPTIONS (continued)

| GVT7164D64 PINS                          | SYMBOL     | TYPE               | DESCRIPTION   |
|--|------------|--------------------|---|
| 124, 125                                 | CE2#, CE3# | Input-Synchronous  | Chip Enable: This active LOW input is used to enable the device.  |
| 126, 127                                 | CE2, CE3   | Input-Synchronous  | Chip enable: This active HIGH input is used to enable the device.   |
| 116                                      | OE#        | Input-Asynchronous | Output Enable: This active LOW asynchronous input enables the data output drivers.  |
| 104                                      | ADV#       | Input-Synchronous  | Address Advance: This active LOW input is used to control the internal burst counter. A HIGH on this pin generates wait cycle (no address advance).   |
| 105                                      | ADSP#      | Input-Synchronous  | Address Status Processor: This active LOW input, along with CE# being LOW, causes a new external address to be registered and a READ cycle is initiated using the new address.  |
| 106                                      | ADSC#      | Input-Synchronous  | Address Status Controller: This active LOW input causes device to be de-selected or selected along with new external address to be registered. A READ or WRITE cycle is initiated depending upon write control inputs.  |
| 41                                       | MODE       | Input-Static       | Mode: This input selects the burst sequence. A LOW on this pin selects LINEAR BURST. A NC or HIGH on this pin selects INTERLEAVED BURST.  |
| 63                                       | ZZ         | Input-Asynchronous | Snooze: This active HIGH input puts the device in low power consumption standby mode. For normal operation, this input has to be either LOW or NC (No Connect).   |
| 66-76, 79-88, 91-101, 2-12, 15-24, 27-37 | DQ1-DQ64   | Input/Output       | Data Inputs/Outputs: First Byte is DQ1-DQ8. Second Byte is DQ9-DQ16. Third Byte is DQ17-DQ24. Fourth Byte is DQ25-DQ32. Fifth Byte is DQ33-DQ40. Sixth Byte is DQ41-DQ48. Seventh Byte is DQ49-DQ56. eighth Byte is DQ57-DQ64. Input data must meet setup and hold times around the rising edge of CLK. |
| 45, 58, 109, 122                         | VCC        | Supply             | Power Supply: +3.3V -5% to +10%.  |
| 46, 59, 110, 123                         | VSS        | Ground             | Ground: GND   |
| 13, 25, 38, 64, 77, 89, 102              | VCCQ       | I/O Supply         | Output Buffer Supply: +2.5V or 3.3V   |
| 1, 14, 26, 39, 65, 78, 90, 103           | VSSQ       | I/O Ground         | Output Buffer Ground: GND   |
| 40, 52                                   | NC         | -                  | No Connect: These signals are not internally connected.   |

## BURST ADDRESS TABLE (MODE = NC/VCC)

| First Address (external) | Second Address (internal) | Third Address (internal) | Fourth Address (internal) |
|--------------------------|---------------------------|--------------------------|---------------------------|
| A...A00                  | A...A01                   | A...A10                  | A...A11                   |
| A...A01                  | A...A00                   | A...A11                  | A...A10                   |
| A...A10                  | A...A11                   | A...A00                  | A...A01                   |
| A...A11                  | A...A10                   | A...A01                  | A...A00                   |

## BURST ADDRESS TABLE (MODE = GND)

| First Address (external) | Second Address (internal) | Third Address (internal) | Fourth Address (internal) |
|--------------------------|---------------------------|--------------------------|---------------------------|
| A...A00                  | A...A01                   | A...A10                  | A...A11                   |
| A...A01                  | A...A10                   | A...A11                  | A...A00                   |
| A...A10                  | A...A11                   | A...A00                  | A...A01                   |
| A...A11                  | A...A00                   | A...A01                  | A...A10                   |

### TRUTH TABLE

| OPERATION                    | ADDRESS USED | CE# | ADSP# | ADSC# | ADV# | WRITE# | OE# | CLK | DQ     |
|------------------------------|--------------|-----|-------|-------|------|--------|-----|-----|--------|
| Deselected Cycle, Power Down | None         | H   | X     | L     | X    | X      | X   | L-H | High-Z |
| READ Cycle, Begin Burst      | External     | L   | L     | X     | X    | X      | L   | L-H | Q      |
| READ Cycle, Begin Burst      | External     | L   | L     | X     | X    | X      | H   | L-H | High-Z |
| WRITE Cycle, Begin Burst     | External     | L   | H     | L     | X    | L      | X   | L-H | D      |
| READ Cycle, Begin Burst      | External     | L   | H     | L     | X    | H      | L   | L-H | Q      |
| READ Cycle, Begin Burst      | External     | L   | H     | L     | X    | H      | H   | L-H | High-Z |
| READ Cycle, Continue Burst   | Next         | X   | H     | H     | L    | H      | L   | L-H | Q      |
| READ Cycle, Continue Burst   | Next         | X   | H     | H     | L    | H      | H   | L-H | High-Z |
| READ Cycle, Continue Burst   | Next         | H   | X     | H     | L    | H      | L   | L-H | Q      |
| READ Cycle, Continue Burst   | Next         | H   | X     | H     | L    | H      | H   | L-H | High-Z |
| WRITE Cycle, Continue Burst  | Next         | X   | H     | H     | L    | L      | X   | L-H | D      |
| WRITE Cycle, Continue Burst  | Next         | H   | X     | H     | L    | L      | X   | L-H | D      |
| READ Cycle, Suspend Burst    | Current      | X   | H     | H     | H    | H      | L   | L-H | Q      |
| READ Cycle, Suspend Burst    | Current      | X   | H     | H     | H    | H      | H   | L-H | High-Z |
| READ Cycle, Suspend Burst    | Current      | H   | X     | H     | H    | H      | L   | L-H | Q      |
| READ Cycle, Suspend Burst    | Current      | H   | X     | H     | H    | H      | H   | L-H | High-Z |
| WRITE Cycle, Suspend Burst   | Current      | X   | H     | H     | H    | L      | X   | L-H | D      |
| WRITE Cycle, Suspend Burst   | Current      | H   | X     | H     | H    | L      | X   | L-H | D      |

- Note:
1. X means "don't care." H means logic HIGH. L means logic LOW. WRITE# = L means [BWE# + BW1#\*BW2#\*BW3#\*BW4#\*BW5#\*BW6#\*BW7#\*BW8#]\*GW# equals LOW. WRITE# = H means [BWE# + BW1#\*BW2#\*BW3#\*BW4#\*BW5#\*BW6#\*BW7#\*BW8#]\*GW# equals HIGH.
  2. BW1# enables write to DQ1-DQ8. BW2# enables write to DQ9-DQ16. BW3# enables write to DQ17-DQ24. BW4# enables write to DQ25-DQ32. BW5# enables write to DQ33-DQ40. BW6# enables write to DQ41-DQ48. BW7# enables write to DQ49-DQ56. BW8# enables write to DQ57-DQ64.
  3. All inputs except OE# must meet setup and hold times around the rising edge (LOW to HIGH) of CLK.
  4. Suspending burst generates wait cycle.
  5. For a write operation following a read operation, OE# must be HIGH before the input data required setup time plus High-Z time for OE# and staying HIGH throughout the input data hold time.
  6. This device contains circuitry that will ensure the outputs will be in High-Z during power-up.
  7. ADSP# LOW along with chip being selected always initiates an READ cycle at the L-H edge of CLK. A WRITE cycle can be performed by setting WRITE# LOW for the CLK L-H edge of the subsequent wait cycle. Refer to WRITE timing diagram for clarification.

### PARTIAL TRUTH TABLE FOR READ/WRITE

| FUNCTION                     | GW# | BWE# | BW1# | BW2# | BW3# | BW4# | BW5# | BW6# | BW7# | BW8# |
|------------------------------|-----|------|------|------|------|------|------|------|------|------|
| READ                         | H   | H    | X    | X    | X    | X    | X    | X    | X    | X    |
| READ                         | H   | X    | H    | H    | H    | H    | H    | H    | H    | H    |
| WRITE one byte (Byte 1)      | H   | L    | L    | H    | H    | H    | H    | H    | H    | H    |
| WRITE one byte (Byte 8)      | H   | L    | H    | H    | H    | H    | H    | H    | H    | L    |
| WRITE two bytes (Byte 2 & 4) | H   | L    | H    | L    | H    | L    | H    | H    | H    | H    |
| WRITE all bytes              | H   | L    | L    | L    | L    | L    | L    | L    | L    | L    |
| WRITE all bytes              | L   | X    | X    | X    | X    | X    | X    | X    | X    | X    |

### ABSOLUTE MAXIMUM RATINGS\*

Voltage on VCC Supply Relative to VSS.....-0.5V to +4.6V  
 $V_{IN}$  .....-0.5V to +6V  
 Storage Temperature (plastic) .....-55°C to +150°  
 Junction Temperature .....+150°  
 Power Dissipation .....1.6W  
 Short Circuit Output Current .....100mA

\*Stresses greater than those listed under “Absolute Maximum Ratings” may cause permanent damage to the device. This is a stress rating only and functional operation of the device at these or any other conditions above those indicated in the operational sections of this specification is not implied. Exposure to absolute maximum rating conditions for extended periods may affect reliability.

### DC ELECTRICAL CHARACTERISTICS AND RECOMMENDED OPERATING CONDITIONS

(0°C ≤ T<sub>a</sub> ≤ 70°C; VCC = 3.3V -5 to +10% unless otherwise noted)

| DESCRIPTION                  | CONDITIONS                                  | SYMBOL    | MIN   | MAX      | UNITS | NOTES |
|------------------------------|---|-----------|-------|----------|-------|-------|
| Input High (Logic 1) Voltage | Data Inputs (DQxx)                          | $V_{IHD}$ | 2.0   | VCCQ+0.3 | V     | 1, 2  |
|                              | All Other Inputs                            | $V_{IH}$  | 2.0   | 4.6      | V     | 1, 2  |
| Input Low (Logic 0) Voltage  |   | $V_{IL}$  | -0.3  | 0.8      | V     | 1, 2  |
| Input Leakage Current        | 0V ≤ $V_{IN}$ ≤ VCC                         | $I_{LI}$  | -2    | 2        | uA    | 14    |
| Output Leakage Current       | Output(s) disabled,<br>0V ≤ $V_{OUT}$ ≤ VCC | $I_{LO}$  | -2    | 2        | uA    |       |
| Output High Voltage          | $I_{OH}$ = -4.0mA                           | $V_{OH}$  | 2.4   |          | V     | 1, 11 |
| Output Low Voltage           | $I_{OL}$ = 8.0mA                            | $V_{OL}$  |       | 0.4      | V     | 1, 11 |
| Supply Voltage               |   | VCC       | 3.1   | 3.6      | V     | 1     |
| I/O Supply Voltage           |   | VCCQ      | 2.375 | VCC      | V     | 1     |

| DESCRIPTION                     | CONDITIONS   | SYM              | TYP | -5  | -6  | -7  | UNITS | NOTES     |
|---------------------------------|--|------------------|-----|-----|-----|-----|-------|-----------|
| Power Supply Current: Operating | Device selected; all inputs ≤ $V_{IL}$ or ≥ $V_{IH}$ ; cycle time ≥ 1KC MIN; VCC = MAX; outputs open     | I <sub>CC</sub>  | 200 | 320 | 280 | 240 | mA    | 3, 12, 13 |
| CMOS Standby                    | Device deselected; VCC = MAX; all inputs ≤ VSS +0.2 or ≥ VCC -0.2; all inputs static; CLK frequency = 0  | I <sub>SB2</sub> | 0.4 | 4   | 4   | 4   | mA    | 12, 13    |
| TTL Standby                     | Device deselected; all inputs ≤ $V_{IL}$ or ≥ $V_{IH}$ ; all inputs static; VCC = MAX; CLK frequency = 0 | I <sub>SB3</sub> | 8   | 18  | 18  | 18  | mA    | 12, 13    |
| Clock Running                   | Device deselected; all inputs ≤ $V_{IL}$ or ≥ $V_{IH}$ ; VCC = MAX; CLK cycle time ≥ 1KC MIN             | I <sub>SB4</sub> | 50  | 95  | 85  | 75  | mA    | 12, 13    |

### CAPACITANCE

| DESCRIPTION                   | CONDITIONS                                     | SYMBOL         | TYP | MAX | UNITS | NOTES |
|-------------------------------|--|----------------|-----|-----|-------|-------|
| Input Capacitance             | T <sub>A</sub> = 25°C; f = 1 MHz<br>VCC = 3.3V | C <sub>I</sub> | 3   | 4   | pF    | 4     |
| Input/Output Capacitance (DQ) |  | C <sub>O</sub> | 6   | 7   | pF    | 4     |

### AC ELECTRICAL CHARACTERISTICS

(Note 5) ( $0^{\circ}\text{C} \leq T_A \leq 70^{\circ}\text{C}$ ;  $V_{CC} = 3.3\text{V} -5 \text{ to } +10\%$ )

| DESCRIPTION                   |                   | -5* |     | -6  |     | -7  |     |       |       |
|-------------------------------|-------------------|-----|-----|-----|-----|-----|-----|-------|-------|
|                               | SYM               | MIN | MAX | MIN | MAX | MIN | MAN | UNITS | NOTES |
| Clock                         |                   |     |     |     |     |     |     |       |       |
| Clock cycle time              | <sup>t</sup> KC   | 10  |     | 12  |     | 15  |     | ns    |       |
| Clock HIGH time               | <sup>t</sup> KH   | 4   |     | 4   |     | 5   |     | ns    |       |
| Clock LOW time                | <sup>t</sup> KL   | 4   |     | 4   |     | 5   |     | ns    |       |
| Output Times                  |                   |     |     |     |     |     |     |       |       |
| Clock to output valid         | <sup>t</sup> KQ   |     | 5   |     | 6   |     | 7   | ns    |       |
| Clock to output invalid       | <sup>t</sup> KQX  | 2   |     | 2   |     | 2   |     | ns    |       |
| Clock to output in Low-Z      | <sup>t</sup> KQLZ | 3   |     | 3   |     | 3   |     | ns    | 6,7   |
| Clock to output in High-Z     | <sup>t</sup> KQHZ |     | 5   |     | 5   |     | 6   | ns    | 6,7   |
| OE to output valid            | <sup>t</sup> OEQ  |     | 5   |     | 6   |     | 7   | ns    | 9     |
| OE to output in Low-Z         | <sup>t</sup> OELZ | 0   |     | 0   |     | 0   |     | ns    | 6,7   |
| OE to output in High-Z        | <sup>t</sup> OEHZ |     | 4   |     | 5   |     | 6   | ns    | 6,7   |
| Setup Times                   |                   |     |     |     |     |     |     |       |       |
| Address, Controls and Data In | <sup>t</sup> S    | 2.5 |     | 2.5 |     | 2.5 |     | ns    | 10    |
| Hold Times                    |                   |     |     |     |     |     |     |       |       |
| Address, Controls and Data In | <sup>t</sup> H    | 0.5 |     | 0.5 |     | 0.5 |     | ns    | 10    |

### CAPACITANCE DERATING

| DESCRIPTION           | SYMBOL          | TYP   | MAX | UNITS   | NOTES |
|-----------------------|-----------------|-------|-----|---------|-------|
| Clock to output valid | $\Delta t_{KQ}$ | 0.016 |     | ns / pF | 15    |

### THERMAL CONSIDERATION

| DESCRIPTION                              | CONDITIONS   | SYMBOL        | TQFP TYP | UNITS                | NOTES |
|--|--|---------------|----------|----------------------|-------|
| Thermal Resistance - Junction to Ambient | Still air, soldered on 4.25 x 1.125 inch 4-layer PCB | $\Theta_{JA}$ | 20       | $^{\circ}\text{C/W}$ |       |
| Thermal Resistance - Junction to Case    |  | $\Theta_{JC}$ | 1        | $^{\circ}\text{C/W}$ |       |

## AC TEST CONDITIONS

|                               |                     |
|-------------------------------|---------------------|
| Input pulse levels            | 0V to 3.0V          |
| Input rise and fall times     | 1.5ns               |
| Input timing reference levels | 1.5V                |
| Output reference levels       | 1.5V                |
| Output load                   | See Figures 1 and 2 |

## OUTPUT LOADS

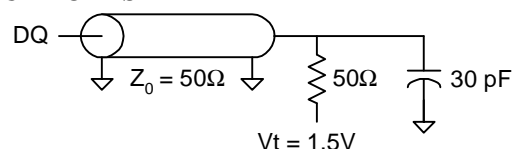


Fig. 1 OUTPUT LOAD EQUIVALENT

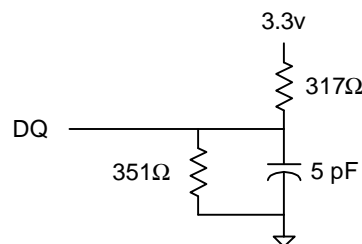


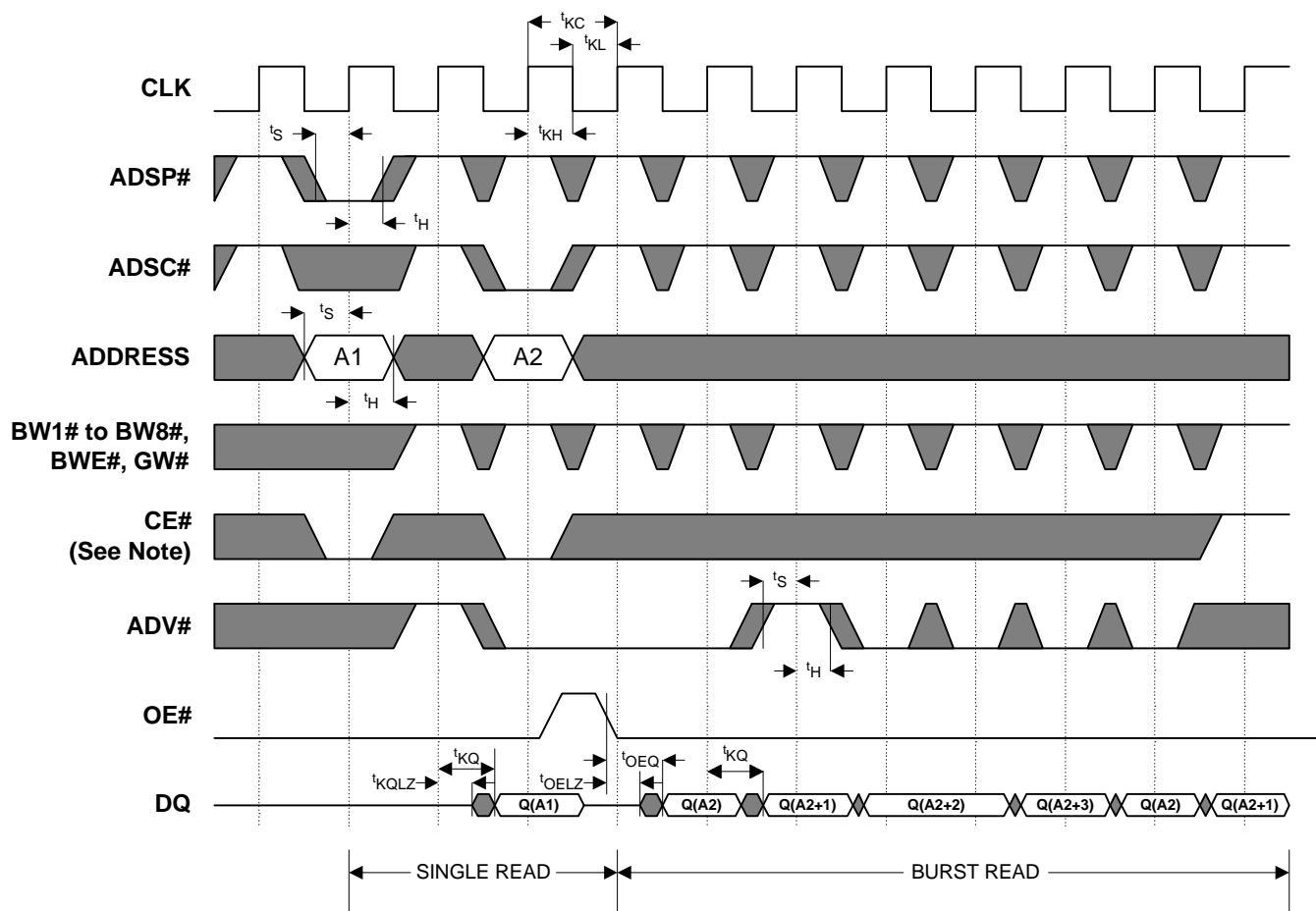
Fig. 2 OUTPUT LOAD EQUIVALENT

## NOTES

- All voltages referenced to VSS (GND).
- Overshoot:  $V_{IH} \leq +6.0V$  for  $t \leq t_{KC}/2$ .  
Undershoot:  $V_{IL} \leq -2.0V$  for  $t \leq t_{KC}/2$
- $I_{cc}$  is given with no output current.  $I_{cc}$  increases with greater output loading and faster cycle times.
- This parameter is sampled.
- Test conditions as specified with the output loading as shown in Fig. 1 unless otherwise noted.
- Output loading is specified with  $CL=5pF$  as in Fig. 2.
- At any given temperature and voltage condition,  $t_{KQHZ}$  is less than  $t_{KQLZ}$  and  $t_{OEZH}$  is less than  $t_{OELZ}$ .
- A READ cycle is defined by byte write enables all HIGH or ADSP# LOW along with chip enables being active for the required setup and hold times. A WRITE cycle is defined by at one byte or all byte WRITE per READ/WRITE TRUTH TABLE.
- OE# is a "don't care" when a byte write enable is sampled LOW.
- This is a synchronous device. All synchronous inputs must meet specified setup and hold time, except for "don't care" as defined in the truth table.
- AC I/O curves are available upon request.
- "Device Deselected" means the device is in POWER -DOWN mode as defined in the truth table. "Device Selected" means the device is active.
- Typical values are measured at 3.3V, 25°C and 20ns cycle time.
- MODE pin has an internal pull-up and ZZ pin has an internal pull-down. These two pins exhibit an input leakage current of  $\pm 30 \mu A$ .
- Capacitance derating applies to capacitance different from the load capacitance shown in Fig. 1.

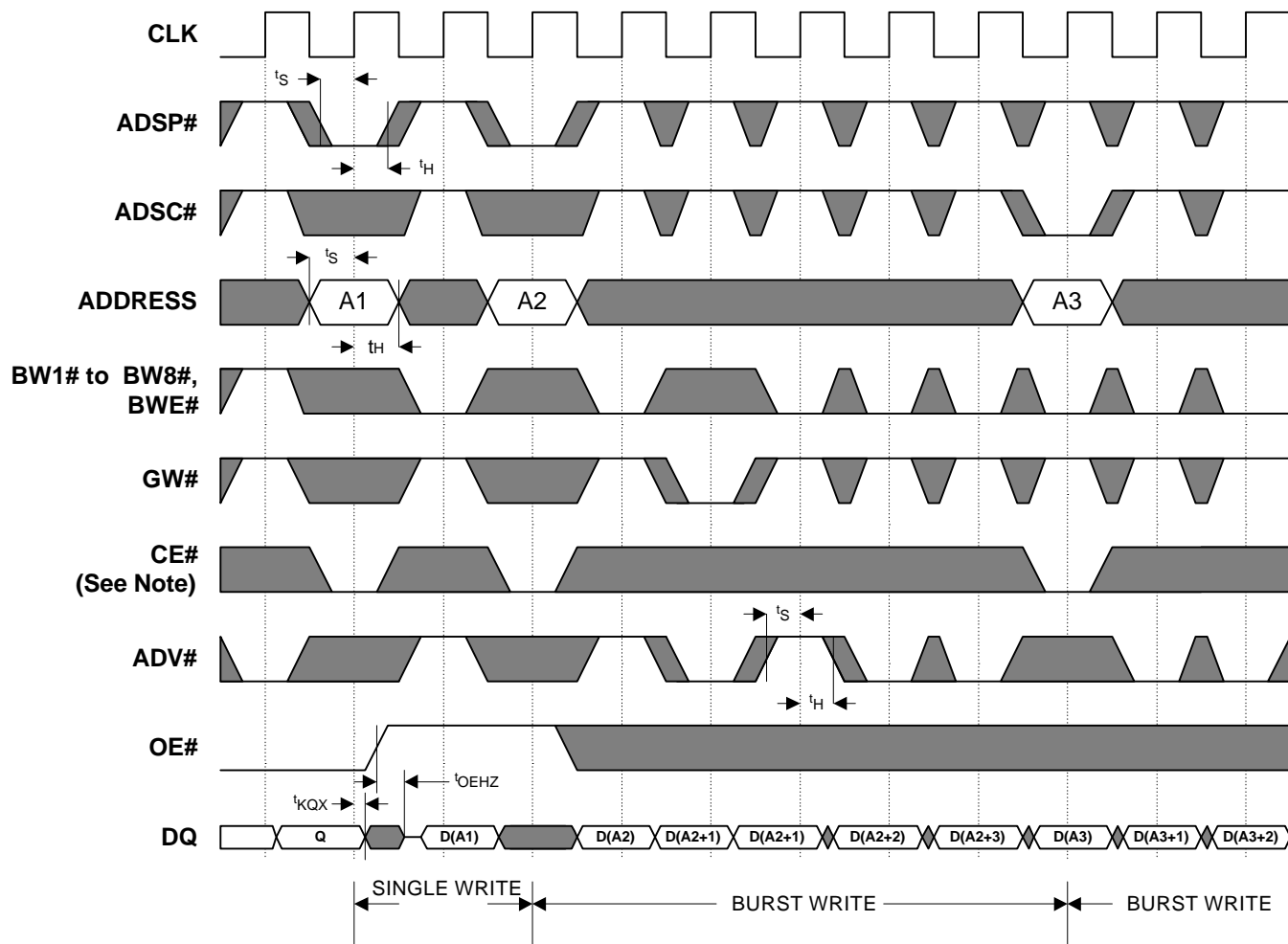


## READ TIMING



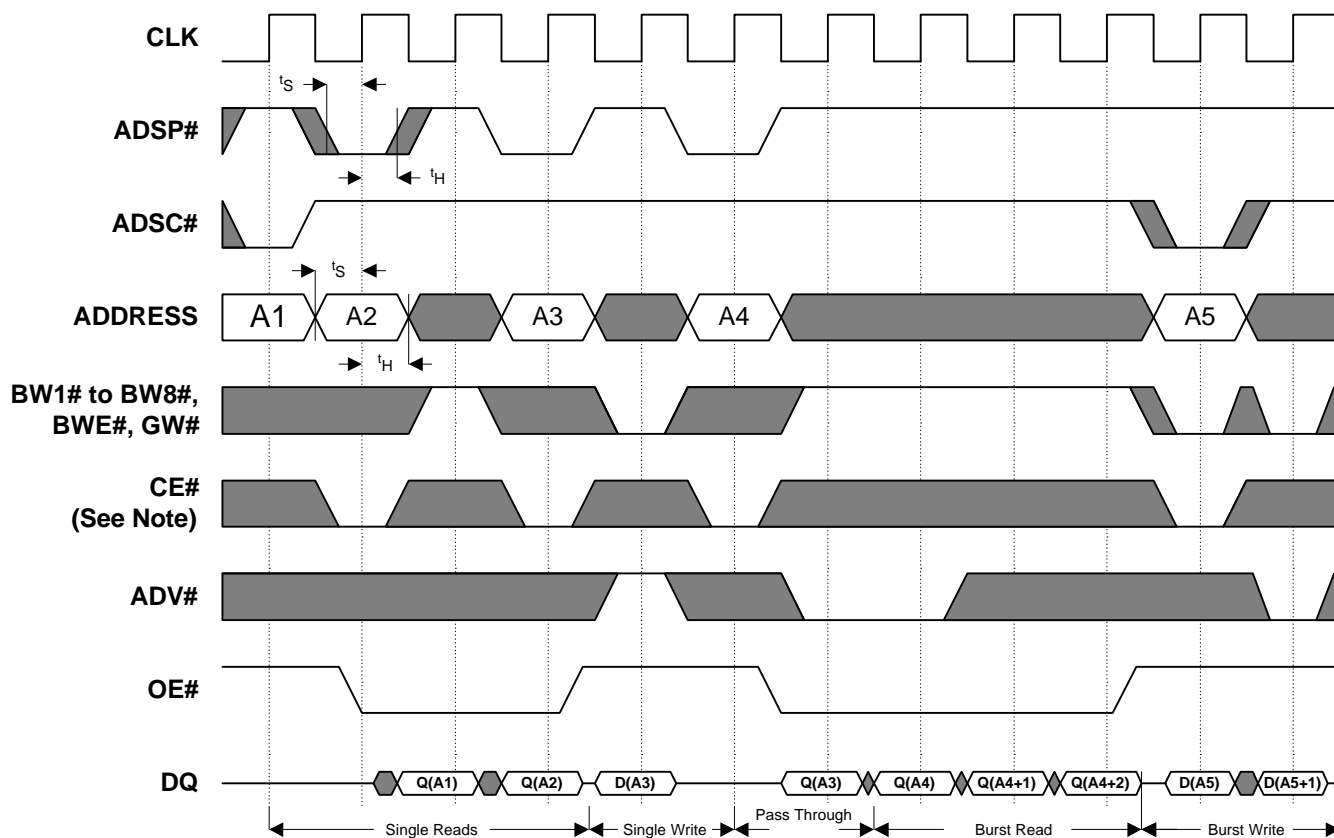
Note: CE# active in this timing diagram means that all chip enables CE#, CE2#, CE3#, CE2, and CE3 are active.

## WRITE TIMING



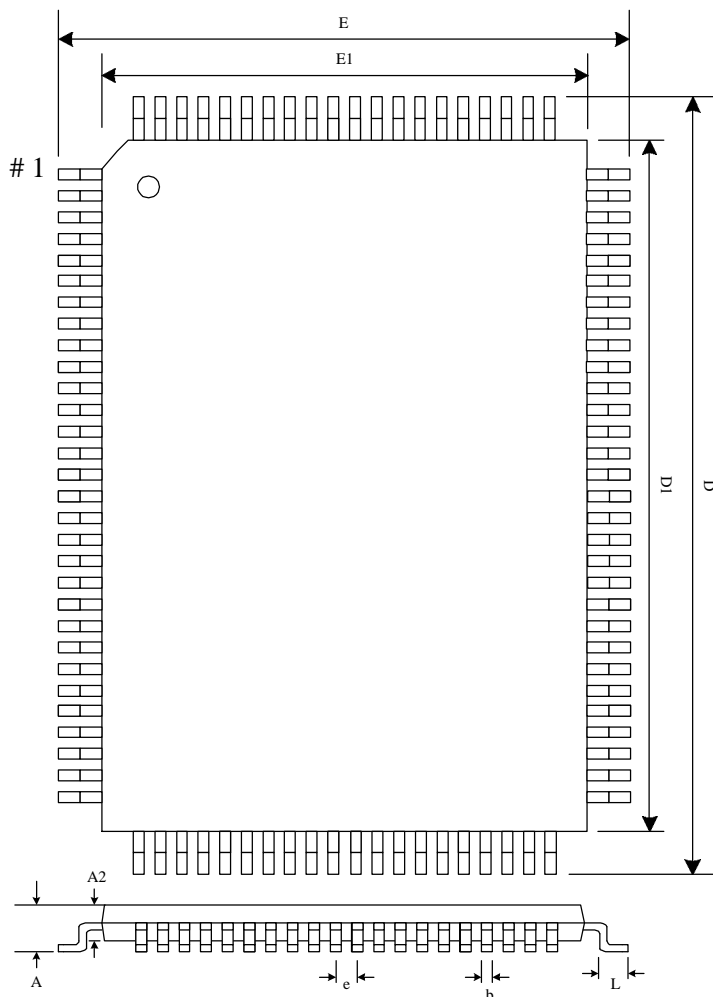
Note: CE# active in this timing diagram means that all chip enables CE#, CE2#, CE3#, CE2, and CE3 are active.

## READ/WRITE TIMING



Note: CE# active in this timing diagram means that all chip enables CE#, CE2#, CE3#, CE2, and CE3 are active.

## 100 Pin PQFP, 128 Pin PQFP, and 128 Pin TQFP Package Dimension



| Package      | PQFP       |       |       | TQFP       |       |       |
|--------------|------------|-------|-------|------------|-------|-------|
| No. of Leads | 128        |       |       | 128        |       |       |
| Symbol       | MIN        | NOM   | MAX   | MIN        | NOM   | MAX   |
| D            | 22.90      | 23.20 | 23.50 | 21.90      | 22.00 | 22.10 |
| D1           | 19.90      | 20.00 | 20.10 | 19.90      | 20.00 | 20.10 |
| E            | 16.90      | 17.20 | 17.50 | 15.90      | 16.00 | 16.10 |
| E1           | 13.90      | 14.00 | 14.10 | 13.90      | 14.00 | 14.10 |
| A            | 2.80       | 3.10  | 3.40  | 1.40       | 1.50  | 1.60  |
| A2           | 2.55       | 2.80  | 3.05  | 1.35       | 1.40  | 1.45  |
| L            | 0.73       | 0.88  | 1.03  | 0.45       | 0.60  | 0.75  |
| b            | 0.17       | 0.20  | 0.27  | 0.17       | 0.20  | 0.27  |
| e            | 0.50 Basic |       |       | 0.50 Basic |       |       |

Note: All dimensions are in Millimeters.

---

## Ordering Information

### **GVT 7164D64 X - X**

Galvantech Prefix

Part Number

Speed (5 = 5ns access/10ns cycle  
6 = 6ns access/12ns cycle  
7 = 7ns access/15ns cycle)Package (Q = 128 PIN PQFP,  
T = 128 PIN TQFP)