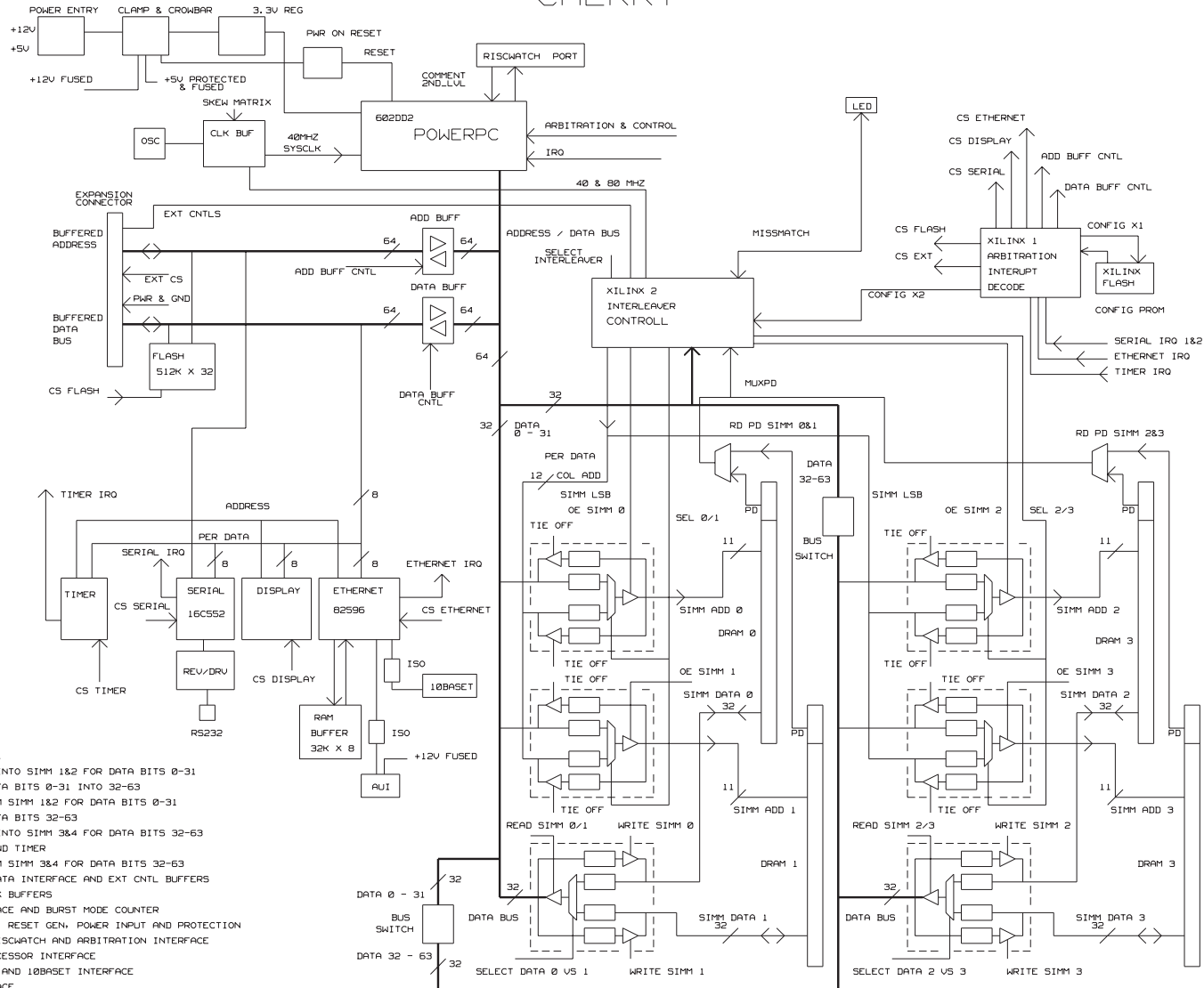


# CHERRY



## CONTENTS

1. OVERVIEW chart
2. ADDRESS MUX INTO SIMM 1&2 FOR DATA BITS 0-31
3. BUS SWITCH DATA BITS 0-31 INTO 32-63
4. DATA MUX FROM SIMM 1&2 FOR DATA BITS 0-31
5. BUS SWITCH DATA BITS 32-63
6. ADDRESS MUX INTO SIMM 3&4 FOR DATA BITS 32-63
7. LCD DISPLAY AND TIMER
8. DATA MUX FROM SIMM 3&4 FOR DATA BITS 32-63
9. 602 ADDRESS/DATA INTERFACE AND EXT CNTL BUFFERS
10. 602 I/O DEMUX BUFFERS
11. FLASH INTERFACE AND BURST MODE COUNTER
12. CLOCK BUFFER, RESET GEN, POWER INPUT AND PROTECTION
13. 602 JTAG / RSWATCH AND ARBITRATION INTERFACE
14. ETHERNET PROCESSOR INTERFACE
15. ETHERNET AUI AND 10BASET INTERFACE
16. DUART INTERFACE
17. EXPANSION INTERFACE PART 1
18. EXPANSION INTERFACE PART 2
19. DECOUPLING CAPS
20. NET TERMINATORS
21. NET TERMINATORS CONTINUED
22. SIGNAL XREF

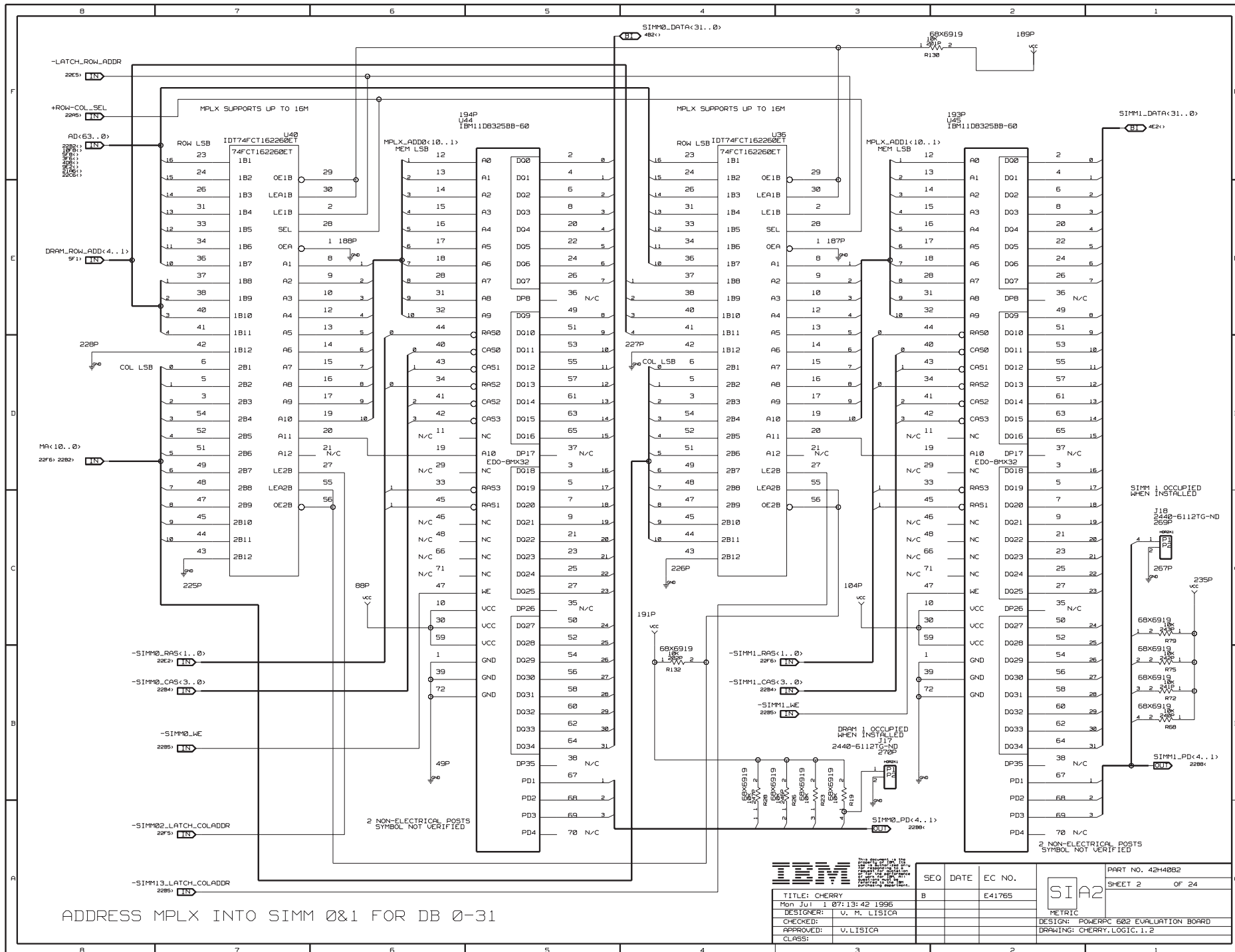
**IBM**


TITLE: CHERRY  
 Mon Jul 1 07:12:29 1996  
 DESIGNER: U. M. LISICA  
 CHECKED:  
 APPROVED: VINCENT LISICA  
 CLASS:

SEQ	DATE	EC NO.
B		E41765

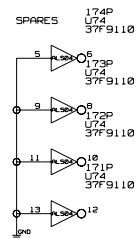
SI A2  
 METRIC

PART NO. 42H4082  
 SHEET 1 OF 24  
 DESIGN: POWERPC 602 EVALUATION BOARD  
 DRAWING: CHERRY.LOGIC.1.1

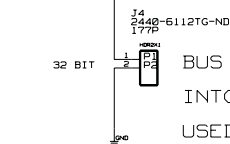


		<div>IBM PC AT 100MHz 100MHz 100MHz 100MHz 100MHz 100MHz 100MHz 100MHz 100MHz 100MHz 100MHz 100MHz 100MHz 100MHz 100MHz 100MHz 100MHz 100MHz 100MHz 100MHz 100MHz 100MHz 100MHz 100MHz 100MHz 100MHz 100MHz 100MHz 100MHz 100MHz 100MHz 100MHz 100MHz 100MHz 100MHz 100MHz 100MHz 100MHz 100MHz 100MHz 100MHz 100MHz 100MHz 100MHz 100MHz 100MHz 100MHz 100MHz 100MHz 100MHz 100MHz 100MHz 100MHz 100MHz 100MHz 100MHz 100MHz 100MHz 100MHz 100MHz 100MHz 100MHz 100MHz 100MHz 100MHz 100MHz 100MHz 100MHz 100MHz 100MHz 100MHz 100MHz 100MHz 100MHz 100MHz 100MHz 100MHz 100MHz 100MHz 100MHz 100MHz 100MHz 100MHz 100MHz 100MHz 100MHz 100MHz 100MHz 100MHz 100MHz 100MHz 100MHz 100MHz 100MHz 100MHz 100MHz 100MHz 100MHz 100MHz 100MHz 100MHz 100MHz 100MHz 100MHz 100MHz 100MHz 100MHz 100MHz 100MHz 100MHz 100MHz 100MHz 100MHz 100MHz 100MHz 100MHz 100MHz 100MHz 100MHz 100MHz 100MHz 100MHz 100MHz 100MHz 100MHz 100MHz 100MHz 100MHz 100MHz 100MHz 100MHz 100MHz 100MHz 100MHz 100MHz 100MHz 100MHz 100MHz 100MHz 100MHz 100MHz 100MHz 100MHz 100MHz 100MHz 100MHz 100MHz 100MHz 100MHz 100MHz 100MHz 100MHz 100MHz 100MHz 100MHz 100MHz 100MHz 100MHz 100MHz 100MHz 100MHz 100MHz 100MHz 100MHz 100MHz 100MHz 100MHz 100MHz 100MHz 100MHz 100MHz 100MHz 100MHz 100MHz 100MHz 100MHz 100MHz 100MHz 100MHz 100MHz 100MHz 100MHz 100MHz 100MHz 100MHz 100MHz 100MHz 100MHz 100MHz 100MHz 100MHz 100MHz 100MHz 100MHz 100MHz 100MHz 100MHz 100MHz 100MHz 100MHz 100MHz 100MHz 100MHz 100MHz 100MHz 100MHz 100MHz 100MHz 100MHz 100MHz 100MHz 100MHz 100MHz 100MHz 100MHz 100MHz 100MHz 100MHz 100MHz 100MHz 100MHz 100MHz 100MHz 100MHz 100MHz 100MHz 100MHz 100MHz 100MHz 100MHz 100MHz 100MHz 100MHz 100MHz 100MHz 100MHz 100MHz 100MHz 100MHz 100MHz 100MHz 100MHz 100MHz 100MHz 100MHz 100MHz 100MHz 100MHz 100MHz 100MHz 100MHz 100MHz 100MHz 100MHz 100MHz 100MHz 100MHz 100MHz 100MHz 100MHz 100MHz 100MHz 100MHz 100MHz 100MHz 100MHz 100MHz 100MHz 100MHz 100MHz 100MHz 100MHz 100MHz 100MHz 100MHz 100MHz 100MHz 100MHz 100MHz 100MHz 100MHz 100MHz 100MHz 100MHz 100MHz 100MHz 100MHz 100MHz 100MHz 100MHz 100MHz 100MHz 100MHz 100MHz 100MHz 100MHz 100MHz 100MHz 100MHz 100MHz 100MHz 100MHz 100MHz 100MHz 100MHz 100MHz 100MHz 100MHz 100MHz 100MHz 100MHz 100MHz 100MHz 100MHz 100MHz 100MHz 100MHz 100MHz 100MHz 100MHz 100MHz 100MHz 100MHz 100MHz 100MHz 100MHz 100MHz 100MHz 100MHz 100MHz 100MHz 100MHz 100MHz 100MHz 100MHz 100MHz 100MHz 100MHz 100MHz 100MHz 100MHz 100MHz 100MHz 100MHz 100MHz 100MHz 100MHz 100MHz 100MHz 100MHz 100MHz 100MHz 100MHz 100MHz 100MHz 100MHz 100MHz 100MHz 100MHz 100MHz 100MHz 100MHz 100MHz 100MHz 100MHz 100MHz 100MHz 100MHz 100MHz 100MHz 100MHz 100MHz 100MHz 100MHz 100MHz 100MHz 100MHz 100MHz 100MHz 100MHz 100MHz 100MHz 100MHz 100MHz 100MHz 100MHz 100MHz 100MHz 100MHz 100MHz 100MHz 100MHz 100MHz 100MHz 100MHz 100MHz 100MHz 100MHz 100MHz 100MHz 100MHz 100MHz 100MHz 100MHz 100MHz 100MHz 100MHz 100MHz 100MHz 100MHz 100MHz 100MHz 100MHz 100MHz 100MHz 100MHz 100MHz 100MHz 100MHz 100MHz 100MHz 100MHz 100MHz 100MHz 100MHz 100MHz 100MHz 100MHz 100MHz 100MHz 100MHz 100MHz 100MHz 100MHz 100MHz 100MHz 100MHz 100MHz 100MHz 100MHz 100MHz 100MHz 100MHz 100MHz 100MHz 100MHz 100MHz 100MHz 100MHz 100MHz 100MHz 100MHz 100MHz 100MHz 100MHz 100MHz 100MHz 100MHz 100MHz 100MHz 100MHz 100MHz 100MHz 100MHz 100MHz 100MHz 100MHz 100MHz 100MHz 100MHz 100MHz 100MHz 100MHz 100MHz 100MHz 100MHz 100MHz 100MHz 100MHz 100MHz 100MHz 100MHz 100MHz 100MHz 100MHz 100MHz 100MHz 100MHz 100MHz 100MHz 100MHz 100MHz 100MHz 100MHz 100MHz 100MHz 100MHz 100MHz 100MHz 100MHz 100MHz 100MHz 100MHz 100MHz 100MHz 100MHz 100MHz 100MHz 100MHz 100MHz 100MHz 100MHz 100MHz 100MHz 100MHz 100MHz 100MHz 100MHz 100MHz 100MHz 100MHz 100MHz 100MHz 100MHz 100MHz 100MHz 100MHz 100MHz 100MHz 100MHz 100MHz 100MHz 100MHz 100MHz 100MHz 100MHz 100MHz 100MHz 100MHz 100MHz 100MHz 100MHz 100MHz 100MHz 100MHz 100MHz 100MHz 100MHz 100MHz 100MHz 100MHz 100MHz 100MHz 100MHz 100MHz 100MHz 100MHz 100MHz 100MHz 100MHz 100MHz 100MHz 100MHz 100MHz 100MHz 100MHz 100MHz 100MHz 100MHz 100MHz 100MHz 100MHz 100MHz 100MHz 100MHz 100MHz 100MHz 100MHz 100MHz 100MHz 100MHz 100MHz 100MHz 100MHz 100MHz 100MHz 100MHz 100MHz 100MHz 100MHz 100MHz 100MHz 100MHz 100MHz 100MHz 100MHz 100MHz 100MHz 100MHz 100MHz 100MHz 100MHz 100MHz 100MHz 100MHz 100MHz 100MHz 100MHz 100MHz 100MHz 100MHz 100MHz 100MHz 100MHz 100MHz 100MHz 100MHz 100MHz 100MHz 100MHz 100MHz 100MHz 100MHz 100MHz 100MHz 100MHz 100MHz 100MHz 100MHz 100MHz 100MHz 100MHz 100MHz 100MHz 100MHz 100MHz 100MHz 100MHz 100MHz 100MHz 100MHz 100MHz 100MHz 100MHz 100MHz 100MHz 100MHz 100MHz 100MHz 100MHz 100MHz 100MHz 100MHz 100MHz 100MHz 100MHz 100MHz 100MHz 100MHz 100MHz 100MHz 100MHz 100MHz 100MHz 100MHz 100MHz 100MHz 100MHz 100MHz 100MHz 100MHz 100MHz 100MHz 100MHz 100MHz 100MHz 100MHz 100MHz 100MHz 100MHz 100MHz 100MHz 100MHz 100MHz 100MHz 100MHz 100MHz 100MHz 100MHz 100MHz 100MHz 100MHz 100MHz 100MHz 100MHz 100MHz 100MHz 100MHz 100MHz 100MHz 100MHz 100MHz 100MHz 100MHz 100MHz 100MHz 100MHz 100MHz 100MHz 100MHz 100MHz 100MHz 100MHz 100MHz 100MHz 100MHz 100MHz 100MHz 100MHz 100MHz 100MHz 100MHz 100MHz 100MHz 100MHz 100MHz 100MHz 100MHz 100MHz 100MHz 100MHz 100MHz 100MHz 100MHz 100MHz 100MHz 100MHz 100MHz 100MHz 100MHz 100MHz 100MHz 100MHz 100MHz 100MHz 100MHz 100MHz 100MHz 100MHz 100MHz 100MHz 100MHz 100MHz 100MHz 100MHz 100MHz 100MHz 100MHz 100MHz 100MHz 100MHz 100MHz 100MHz 100MHz 100MHz 100MHz 100MHz 100MHz 100MHz 100MHz 100MHz 100MHz 100MHz 100MHz 100MHz 100MHz 100MHz 100MHz 100MHz 100MHz 100MHz 100MHz 100MHz 100MHz 100MHz 100MHz 100MHz 100MHz 100MHz 100MHz 100MHz 100MHz 100MHz 100MHz 100MHz 100MHz 100MHz 100MHz 100MHz 100MHz 100MHz 100MHz 100MHz 100MHz 100MHz 100MHz 100MHz 100MHz 100MHz 100MHz 100MHz 100MHz 100MHz 100MHz 100MHz 100MHz 100MHz 100MHz 100MHz 100MHz 100MHz 100MHz 100MHz 100MHz 100MHz 100MHz 100MHz 100MHz 100MHz 100MHz 100MHz 100MHz 100MHz 100MHz 100MHz 100MHz 100MHz 100MHz 100MHz 100MHz 100MHz 100MHz 100MHz 100MHz 100MHz 100MHz 100MHz 100MHz 100MHz 100MHz 100MHz 100MHz 100MHz 100MHz 100MHz 100MHz 100MHz 100MHz 100MHz 100MHz 100MHz 100MHz 100MHz 100MHz 100MHz 100MHz 100MHz 100MHz 100MHz 100MHz 100MHz 100MHz 100MHz 100MHz 100MHz 100MHz 100MHz 100MHz 100MHz 100MHz 100MHz 100MHz 100MHz 100MHz 100MHz 100MHz 100MHz 100MHz 100MHz 100MHz 100MHz 100MHz 100MHz 100MHz 100MHz 100MHz 100MHz 100MHz 100MHz 100MHz 100MHz 100MHz 100MHz 100MHz 100MHz 100MHz 100MHz 100MHz 100MHz 100MHz 100MHz 100MHz 100MHz 100MHz 100MHz 100MHz 100MHz 100MHz 100MHz 100MHz 100MHz 100MHz 100MHz 100MHz 100MHz 100MHz 100MHz 100MHz 100MHz 100MHz 100MHz 100MHz 100MHz 100MHz 100MHz 100MHz 100MHz 100MHz 100MHz 100MHz 100MHz 100MHz 100MHz 100MHz 100MHz 100MHz 100MHz 100MHz 100MHz 100MHz 100MHz 100MHz 100MHz 100MHz 100MHz 100MHz 100MHz 100MHz 100MHz 100MHz 100MHz 100MHz 100MHz 100MHz 100MHz 100MHz 100MHz 100MHz 100MHz 100MHz 100MHz 100MHz 100MHz 100MHz 100MHz 100MHz 100MHz 100MHz 100MHz 100MHz 100MHz 100MHz 100MHz 100MHz 100MHz 100MHz 100MHz 100MHz 100MHz 100MHz 100MHz 100MHz 100MHz 100MHz 100MHz 100MHz 100MHz 100MHz 100MHz 100MHz 100MHz 100MHz 100MHz 100MHz 100MHz 100MHz 100MHz 100MHz 100MHz 100MHz 100MHz 100MHz 100MHz 100MHz 100MHz 100MHz 100MHz 100MHz 100MHz 100MHz 100MHz 100MHz 100MHz 100MHz 100MHz 100MHz 100MHz 100MHz 100MHz 100MHz 100MHz 100MHz 100MHz 100MHz 100MHz 100MHz 100MHz 100MHz 100MHz 100MHz 100MHz 100MHz 100MHz 100MHz 100MHz 100MHz 100MHz 100MHz 100MHz 100MHz 100MHz 100MHz 100MHz 100MHz 100MHz 100MHz 100MHz 100MHz 100MHz 100MHz 100MHz 100MHz 100MHz 100MHz 100MHz 100MHz 100MHz 100MHz 100MHz 100MHz 100MHz 100MHz 100MHz 100MHz 100MHz 100MHz 100MHz 100MHz 100MHz 100MHz 100MHz 100MHz 100MHz 100MHz 100MHz 100MHz 100MHz 100MHz 100MHz 100MHz 100MHz 100MHz 100MHz 100MHz 100MHz 100MHz 100MHz 100MHz 100MHz 100MHz 100MHz 100MHz 100MHz 100MHz 100MHz 100MHz 100MHz 100MHz 100MHz 100MHz 100MHz 100MHz 100MHz 100MHz 100MHz 100MHz 100MHz 100MHz 100MHz 100MHz 100MHz 100MHz 100MHz 100MHz 100MHz 100MHz 100MHz 100MHz 100MHz 100MHz 100MHz 100MHz 100MHz 100MHz 100MHz 100MHz 100MHz 100MHz 100MHz 100MHz 100MHz 100MHz 100MHz 100MHz 100MHz 100MHz 100MHz 100MHz 100MHz 100MHz 100MHz 100MHz 100MHz 100MHz 100MHz 100MHz 100MHz 100MHz 100MHz 100MHz 100MHz 100MHz 100MHz 100MHz 100MHz 100MHz 100MHz 100MHz 100MHz 100MHz 100MHz 100MHz 100MHz 100MHz 100MHz 100MHz 100MHz 100MHz 100MHz 100MHz 100MHz 100MHz 100MHz 100MHz 100MHz 100MHz 100MHz 100MHz 100MHz 100MHz 100MHz 100MHz 100MHz 100MHz 100MHz 100MHz 100MHz 100MHz 100MHz 100MHz 100MHz 100MHz 100MHz 100MHz 100MHz 100MHz 100MHz 100MHz 100MHz 100MHz 100MHz 100MHz 100MHz 100MHz 100MHz 100MHz 100MHz 100MHz 100MHz 100MHz 100MHz 100MHz 100MHz 100MHz 100MHz 100MHz 100MHz 100MHz 100MHz 100MHz 100MHz 100MHz 100MHz 100MHz 100MHz 100MHz 100MHz 100MHz 100MHz 100MHz 100MHz 100MHz 100MHz 100MHz 100MHz 100MHz 100MHz 100MHz 100MHz 100MHz 100MHz 100MHz 100MHz 100MHz 100MHz 100MHz 100MHz 100MHz 100MHz 100MHz 100MHz 100MHz 100MHz 100MHz 100MHz 100MHz 100MHz 100MHz 100MHz 100MHz 100MHz 100MHz 100MHz 100MHz 100MHz 100MHz 100MHz 100MHz 100MHz 100MHz 100MHz 100MHz 100MHz 100MHz 100MHz 100MHz 100MHz 100MHz 100MHz 100MHz 100MHz 100MHz 100MHz 100MHz 100MHz 100MHz 100MHz 100MHz 100MHz 100MHz 100MHz 100MHz 100MHz 100MHz 100MHz 100MHz 100MHz 100MHz 100MHz 100MHz 100MHz 100MHz 100MHz 100MHz 100MHz 100MHz 100MHz 100MHz 100MHz 100MHz 100MHz 100MHz 100MHz 100MHz 100MHz 100MHz 100MHz 100MHz 100MHz 100MHz 100MHz 100MHz 100MHz 100MHz 100MHz 100MHz 100MHz 100MHz 100MHz 100MHz 100MHz 100MHz 100MHz 100MHz 100MHz 100MHz 100MHz 100MHz 100MHz 100MHz 100MHz 100MHz 100MHz 100MHz 100MHz 100MHz 100MHz 100MHz 100MHz 100MHz 100MHz 100MHz 100MHz 100MHz 100MHz 100MHz 100MHz 100MHz 100MHz 100MHz 100MHz 100MHz 100MHz 100MHz 100MHz 100MHz 100MHz 100MHz 100MHz 100MHz 100MHz 100MHz 100MHz 100MHz 100MHz 100MHz 100MHz 100MHz 100MHz 100MHz 100MHz 100MHz 100MHz 100MHz 100MHz 100MHz 100MHz 100MHz 100MHz 100MHz 100MHz 100MHz 100MHz 100MHz 100MHz 100MHz 100MHz 100MHz 100MHz 100MHz 100MHz 100MHz 100MHz 100MHz 100MHz 100MHz 100MHz 100MHz 100MHz 100MHz 100MHz 100MHz 100MHz 100MHz 100MHz 100MHz 100MHz 100MHz 100MHz 100MHz 100MHz 100MHz 100MHz 100MHz 100MHz 100MHz 100MHz 100MHz 100MHz 100MHz 100MHz 100MHz 100MHz 100MHz 100MHz 100MHz 100MHz 100MHz 100MHz 100MHz 100MHz 100MHz 100MHz 100MHz 100MHz 100MHz 100MHz 100MHz 100MHz 100MHz 100MHz 100MHz 100MHz 100MHz 100MHz 100MHz 100MHz 100MHz 100MHz 100MHz 100MHz 100MHz 100MHz 100MHz 100MHz 100MHz 100MHz 100MHz 100MHz 100MHz 100MHz 100MHz 100MHz 100MHz 100MHz 100MHz 100MHz 100MHz 100MHz 100MHz 100MHz 100MHz 100MHz 100MHz 100MHz 100MHz 100MHz 100MHz 100MHz 100MHz 100MHz 100MHz 100MHz 100MHz 100MHz 100MHz 100MHz 100MHz 100MHz 100MHz 100MHz 100MHz 100MHz 100MHz 100MHz 100MHz 100MHz 100MHz 100MHz 100MHz 100MHz 100MHz 100MHz 100MHz 100MHz 100MHz 100MHz 100MHz 100MHz 100MHz 100MHz 100MHz 100MHz 100MHz 100MHz 100MHz 100MHz 100MHz 100MHz 100MHz 100MHz 100MHz 100MHz 100MHz 100MHz 100MHz 100MHz 100MHz 100MHz 100MHz 100MHz 100MHz 100MHz 100MHz 100MHz 100MHz 100MHz 100MHz 100MHz 100MHz 100MHz 100MHz 100MHz 100MHz 100MHz 100MHz 100MHz 100MHz 100MHz 100MHz 100MHz 100MHz 100MHz 100MHz 100MHz 100MHz 100MHz 100MHz 100MHz 100MHz 100MHz 100MHz 100MHz 100MHz 100MHz 100MHz 100MHz 100MHz 100MHz 100MHz 100MHz 100MHz 100MHz 100MHz 100MHz 100MHz 100MHz 100MHz 100MHz 100MHz 100MHz 100MHz 100MHz 100MHz 100MHz 100MHz 100MHz 100MHz 100MHz 100MHz 100MHz 100MHz 100MHz 100MHz 100MHz 100MHz 100MHz 100MHz 100MHz 100MHz 100MHz 100MHz 100MHz 100MHz</div>		
---------------------------------------------------------------------------------------	--	------------------------------------------------------------------------------------------------------------------------------------------------------------------------------------------------------------------------------------------------------------------------------------------------------------------------------------------------------------------------------------------------------------------------------------------------------------------------------------------------------------------------------------------------------------------------------------------------------------------------------------------------------------------------------------------------------------------------------------------------------------------------------------------------------------------------------------------------------------------------------------------------------------------------------------------------------------------------------------------------------------------------------------------------------------------------------------------------------------------------------------------------------------------------------------------------------------------------------------------------------------------------------------------------------------------------------------------------------------------------------------------------------------------------------------------------------------------------------------------------------------------------------------------------------------------------------------------------------------------------------------------------------------------------------------------------------------------------------------------------------------------------------------------------------------------------------------------------------------------------------------------------------------------------------------------------------------------------------------------------------------------------------------------------------------------------------------------------------------------------------------------------------------------------------------------------------------------------------------------------------------------------------------------------------------------------------------------------------------------------------------------------------------------------------------------------------------------------------------------------------------------------------------------------------------------------------------------------------------------------------------------------------------------------------------------------------------------------------------------------------------------------------------------------------------------------------------------------------------------------------------------------------------------------------------------------------------------------------------------------------------------------------------------------------------------------------------------------------------------------------------------------------------------------------------------------------------------------------------------------------------------------------------------------------------------------------------------------------------------------------------------------------------------------------------------------------------------------------------------------------------------------------------------------------------------------------------------------------------------------------------------------------------------------------------------------------------------------------------------------------------------------------------------------------------------------------------------------------------------------------------------------------------------------------------------------------------------------------------------------------------------------------------------------------------------------------------------------------------------------------------------------------------------------------------------------------------------------------------------------------------------------------------------------------------------------------------------------------------------------------------------------------------------------------------------------------------------------------------------------------------------------------------------------------------------------------------------------------------------------------------------------------------------------------------------------------------------------------------------------------------------------------------------------------------------------------------------------------------------------------------------------------------------------------------------------------------------------------------------------------------------------------------------------------------------------------------------------------------------------------------------------------------------------------------------------------------------------------------------------------------------------------------------------------------------------------------------------------------------------------------------------------------------------------------------------------------------------------------------------------------------------------------------------------------------------------------------------------------------------------------------------------------------------------------------------------------------------------------------------------------------------------------------------------------------------------------------------------------------------------------------------------------------------------------------------------------------------------------------------------------------------------------------------------------------------------------------------------------------------------------------------------------------------------------------------------------------------------------------------------------------------------------------------------------------------------------------------------------------------------------------------------------------------------------------------------------------------------------------------------------------------------------------------------------------------------------------------------------------------------------------------------------------------------------------------------------------------------------------------------------------------------------------------------------------------------------------------------------------------------------------------------------------------------------------------------------------------------------------------------------------------------------------------------------------------------------------------------------------------------------------------------------------------------------------------------------------------------------------------------------------------------------------------------------------------------------------------------------------------------------------------------------------------------------------------------------------------------------------------------------------------------------------------------------------------------------------------------------------------------------------------------------------------------------------------------------------------------------------------------------------------------------------------------------------------------------------------------------------------------------------------------------------------------------------------------------------------------------------------------------------------------------------------------------------------------------------------------------------------------------------------------------------------------------------------------------------------------------------------------------------------------------------------------------------------------------------------------------------------------------------------------------------------------------------------------------------------------------------------------------------------------------------------------------------------------------------------------------------------------------------------------------------------------------------------------------------------------------------------------------------------------------------------------------------------------------------------------------------------------------------------------------------------------------------------------------------------------------------------------------------------------------------------------------------------------------------------------------------------------------------------------------------------------------------------------------------------------------------------------------------------------------------------------------------------------------------------------------------------------------------------------------------------------------------------------------------------------------------------------------------------------------------------------------------------------------------------------------------------------------------------------------------------------------------------------------------------------------------------------------------------------------------------------------------------------------------------------------------------------------------------------------------------------------------------------------------------------------------------------------------------------------------------------------------------------------------------------------------------------------------------------------------------------------------------------------------------------------------------------------------------------------------------------------------------------------------------------------------------------------------------------------------------------------------------------------------------------------------------------------------------------------------------------------------------------------------------------------------------------------------------------------------------------------------------------------------------------------------------------------------------------------------------------------------------------------------------------------------------------------------------------------------------------------------------------------------------------------------------------------------------------------------------------------------------------------------------------------------------------------------------------------------------------------------------------------------------------------------------------------------------------------------------------------------------------------------------------------------------------------------------------------------------------------------------------------------------------------------------------------------------------------------------------------------------------------------------------------------------------------------------------------------------------------------------------------------------------------------------------------------------------------------------------------------------------------------------------------------------------------------------------------------------------------------------------------------------------------------------------------------------------------------------------------------------------------------------------------------------------------------------------------------------------------------------------------------------------------------------------------------------------------------------------------------------------------------------------------------------------------------------------------------------------------------------------------------------------------------------------------------------------------------------------------------------------------------------------------------------------------------------------------------------------------------------------------------------------------------------------------------------------------------------------------------------------------------------------------------------------------------------------------------------------------------------------------------------------------------------------------------------------------------------------------------------------------------------------------------------------------------------------------------------------------------------------------------------------------------------------------------------------------------------------------------------------------------------------------------------------------------------------------------------------------------------------------------------------------------------------------------------------------------------------------------------------------------------------------------------------------------------------------------------------------------------------------------------------------------------------------------------------------------------------------------------------------------------------------------------------------------------------------------------------------------------------------------------------------------------------------------------------------------------------------------------------------------------------------------	--	--

DRAM ACCESS PARMS  
FOR DRAMS 0&1 / 2&3  
MUST ALWAYS MATCH



-EN-SIMM2&3\_BITS\_31\_0  
22F34 17E711



BUS SWITCH FOR DRAM 2 & 3 DATA BITS 63 TO 32  
INTO 602 DATA BUS BITS 31 TO 0  
USED ONLY FOR 32 BIT MEMORY MODE

AD(63..0)  
DATA BITS 31..0

AD(63..0)  
DATA BITS 31..0

AD(63..0)  
DATA BITS 31..0

AD(63..0)  
DATA BITS 31..0

AD(63..0)  
DATA BITS 31..0

15K65919  
14.36

-EN-SIMM2&3\_BITS\_63\_32  
22F34 17E711

U74  
37F9110

-EN-SIMM2&3\_BITS\_63\_32  
22F34 17E711

IBM

THIS DOCUMENT IS THE PROPERTY OF IBM. IT IS LOANED TO YOU BY IBM. IT IS NOT TO BE REPRODUCED OR TRANSMITTED IN ANY FORM OR BY ANY MEANS, ELECTRONIC OR MECHANICAL, INCLUDING PHOTOCOPYING, RECORDING, OR BY ANY INFORMATION STORAGE AND RETRIEVAL SYSTEM, WITHOUT PERMISSION IN WRITING FROM THE INTERNATIONAL BUSINESS MACHINES CORPORATION.

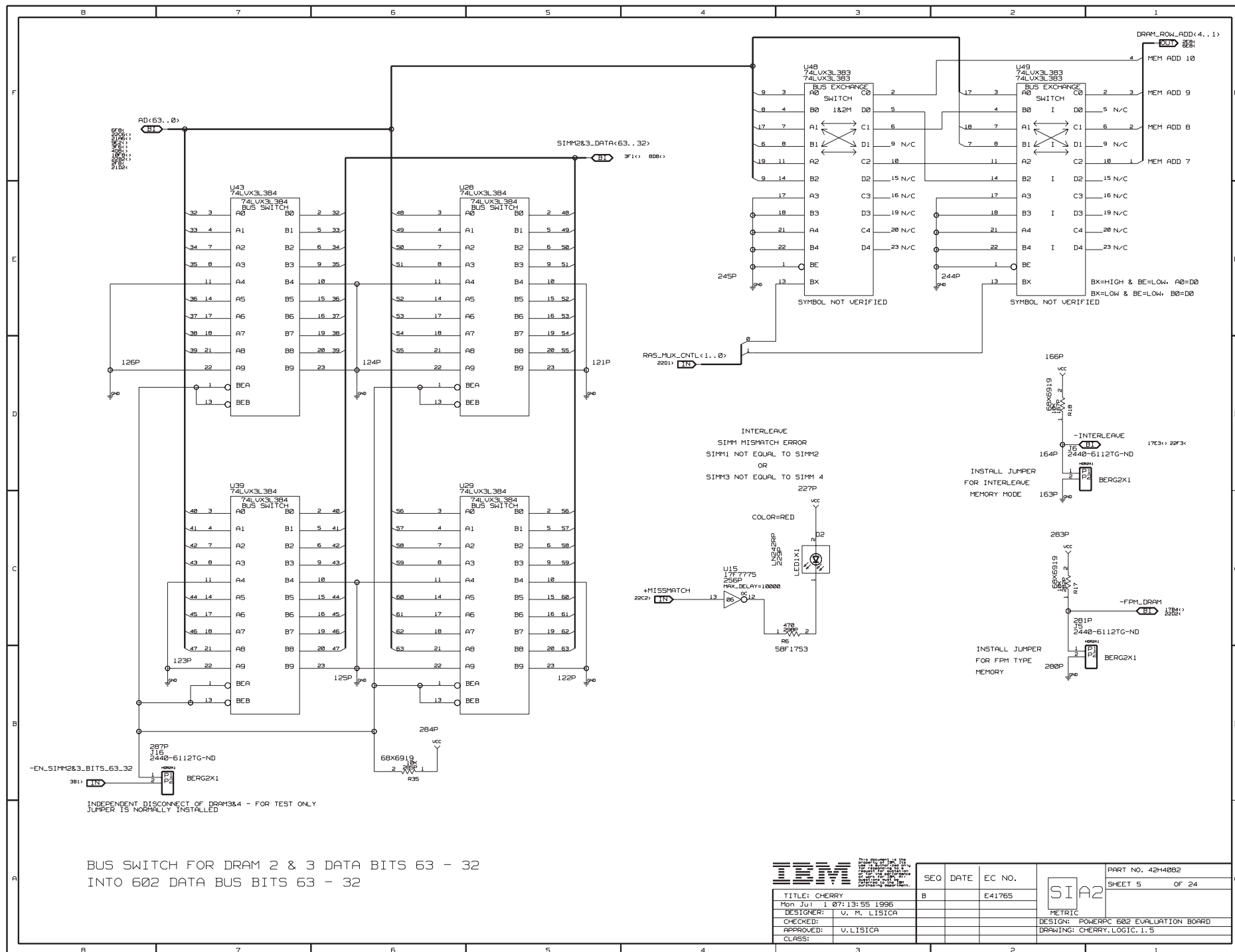
TITLE: CHERRY  
Mon Jul 1 07:13:48 1996  
DESIGNER: V. M. LISICA  
CHECKED:  
APPROVED: V. LISICA  
CLASS:

SEQ	DATE	EC NO.
B		E41765

SIA2

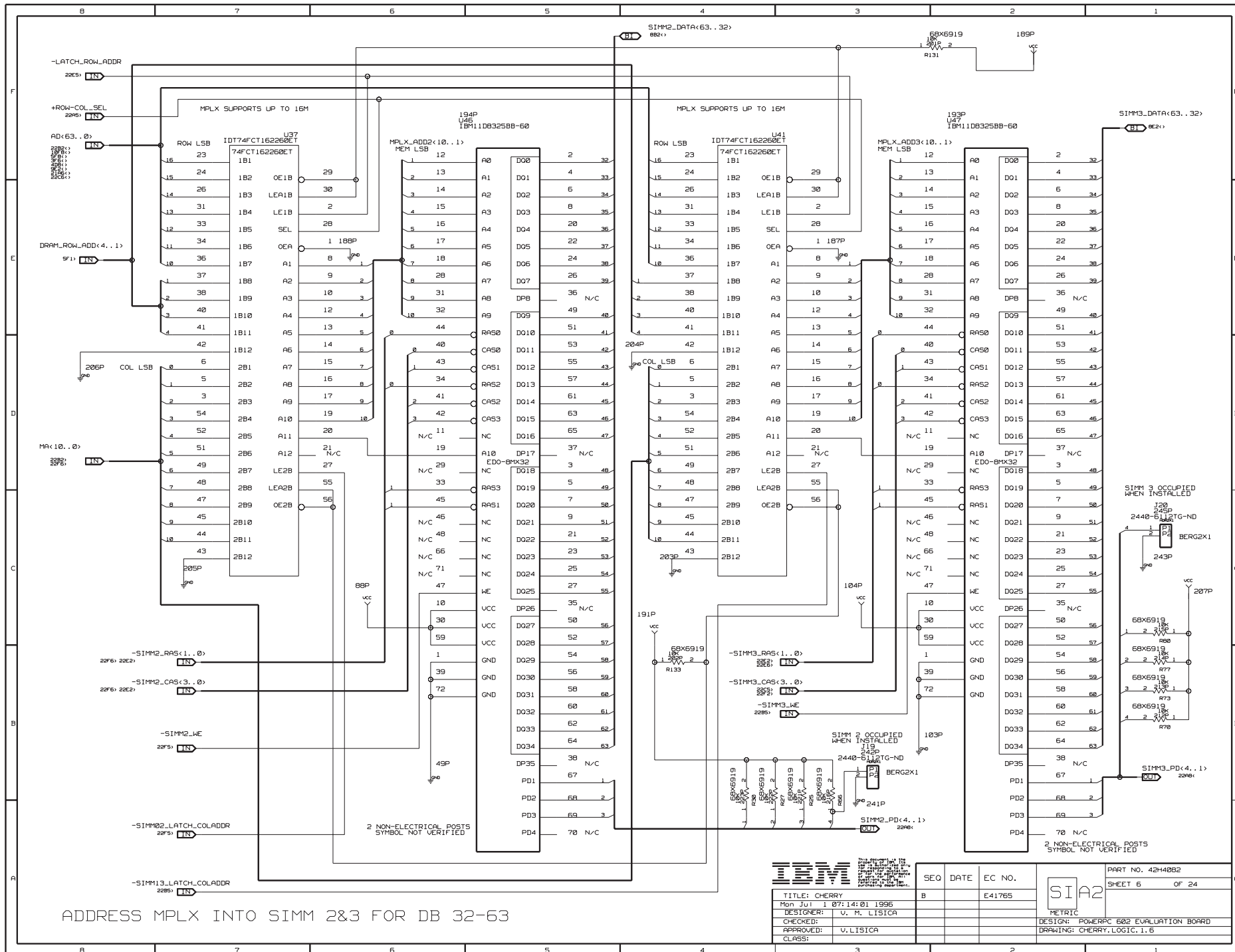
PART NO. 42H4082  
SHEET 3 OF 24  
METRIC  
DESIGN: POWERPC 602 EVALUATION BOARD  
DRAWING: CHERRY, LOGIC, 1.3





BUS SWITCH FOR DRAM 2 & 3 DATA BITS 63 - 32  
INTO 602 DATA BUS BITS 63 - 32

IBM		SEQ		DATE	EC NO.	SIA2		PART NO. 42H40B2
TITLE: CHERRY		B			E41765	SHEET 5		OF 24
Rev: JUL 1 07:13:55 1996						METRIC		
DESIGNER: V. M. LISICA						DESIGN: POWERPC 602 EVALUATION BOARD		
CHECKED:						DRAWING: CHERRY.LOGIC.1.5		
APPROVED: V. LISICA								
CLASS:								

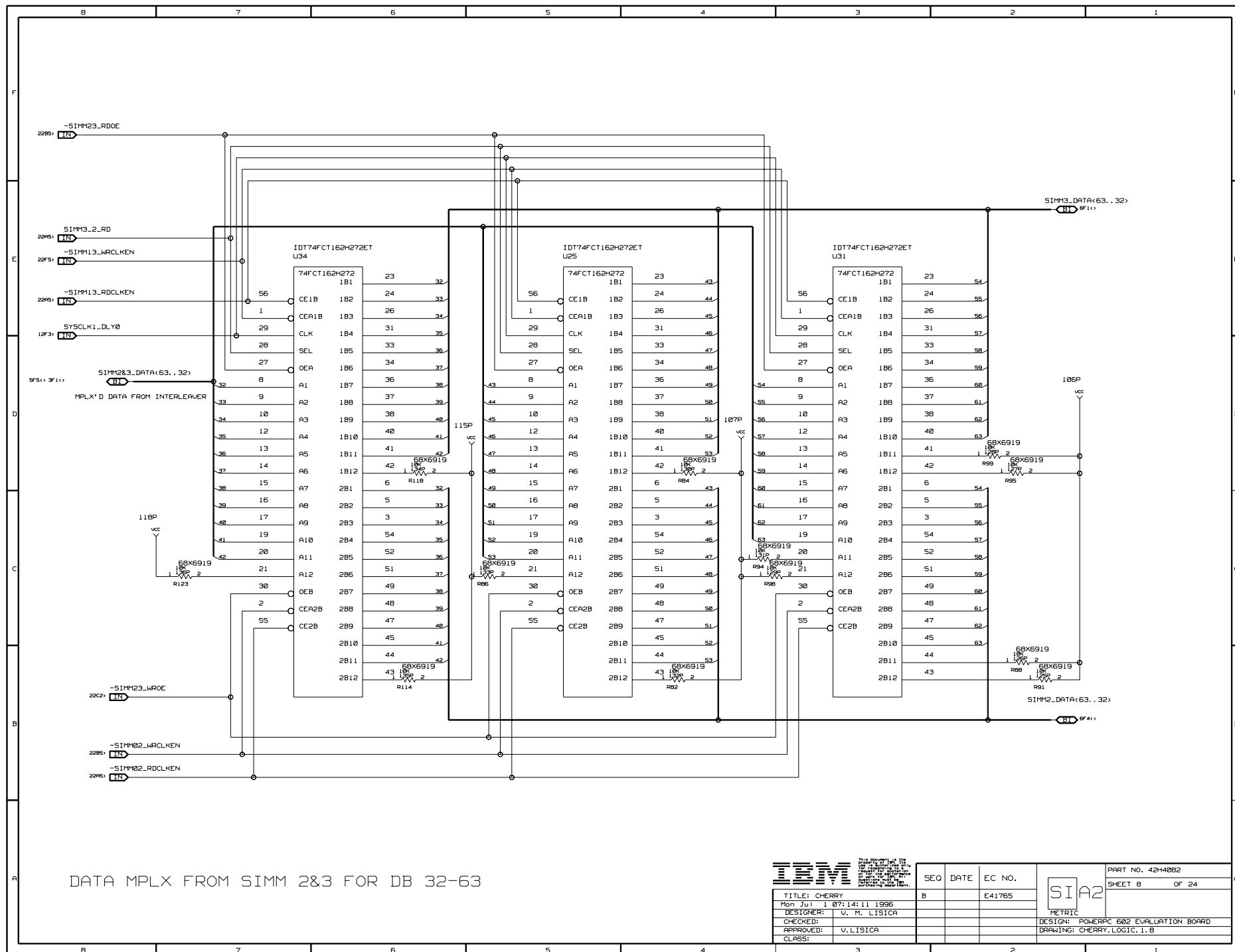


ADDRESS MPLX INTO SIMM 2&3 FOR DB 32-63

		<small>IBM POWERPC 602 EVALUATION BOARD DESIGNED BY: V. M. LISICA CHECKED BY: V. M. LISICA APPROVED BY: V. M. LISICA CLASS: 1.1.6</small>	
TITLE: CHERRY	Rev: JUL 1 07: 14:01 1996	DESIGNER: V. M. LISICA	CHECKED: V. M. LISICA
APPROVED: V. M. LISICA	CLASS: 1.1.6		

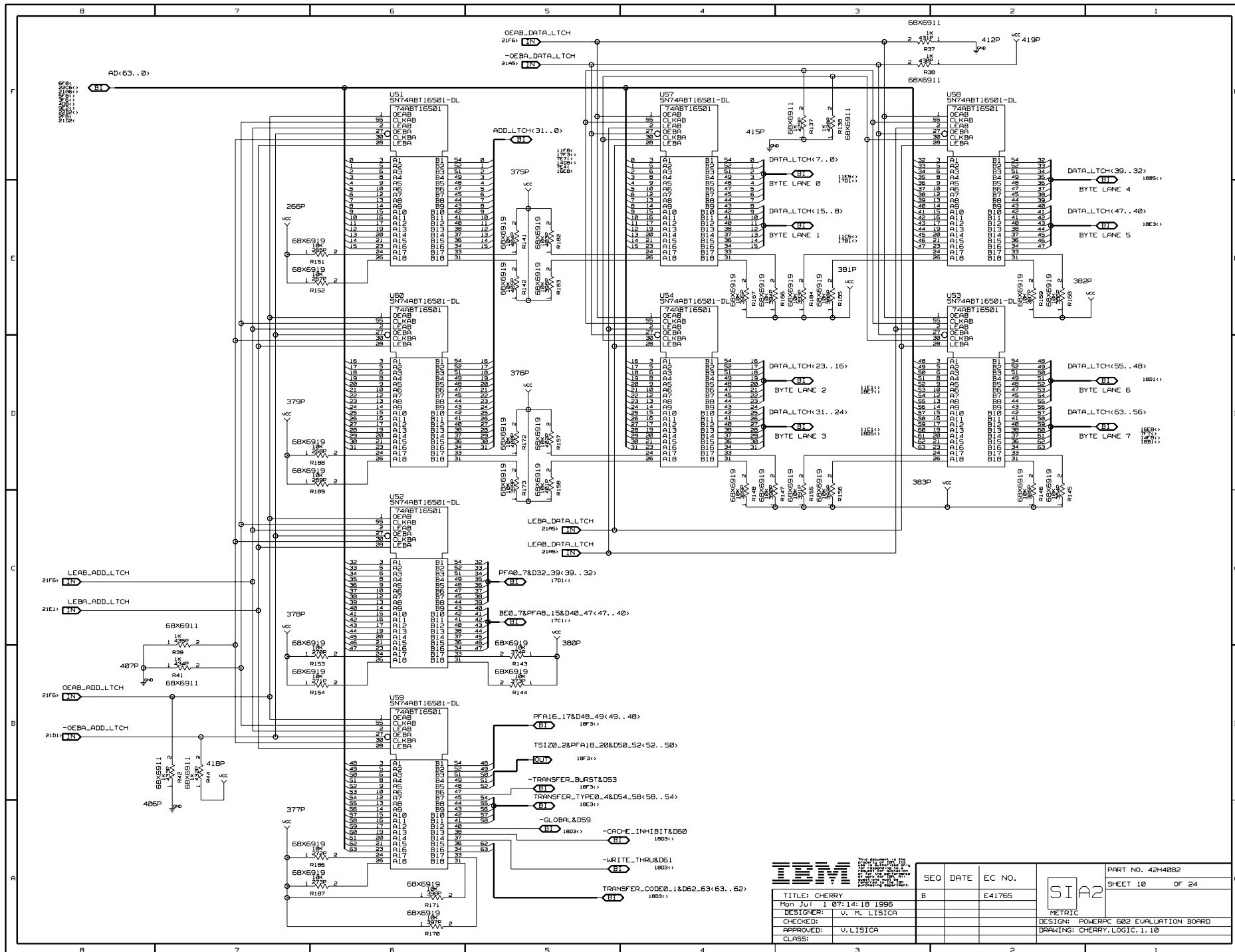
SEQ	DATE	EC NO.	SIA2	PART NO. 42H40B2
B		E41765		SHEET 6 OF 24
			METRIC	
			DESIGN: POWERPC 602 EVALUATION BOARD	
			DRAWING: CHERRY.LOGIC.1.6	



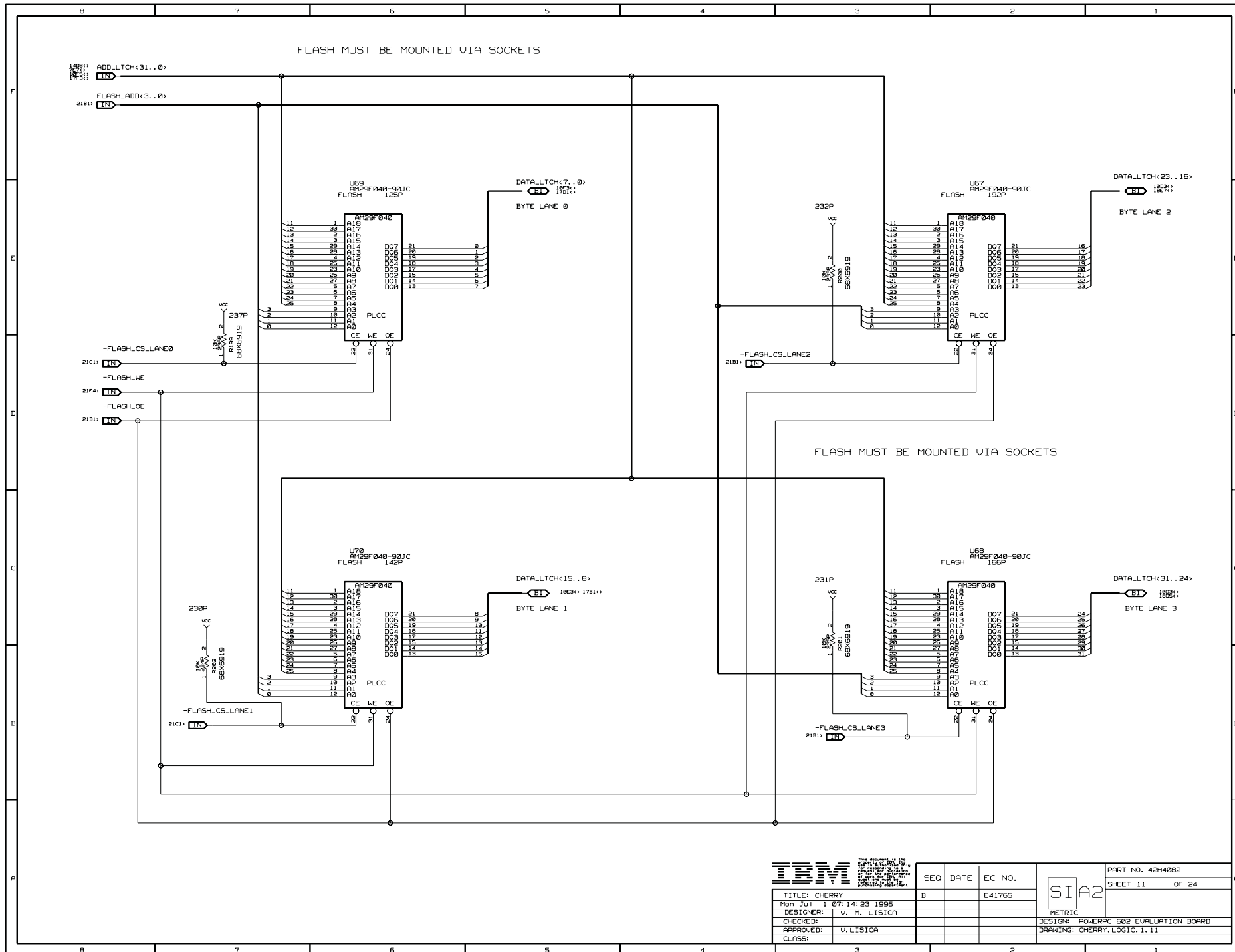


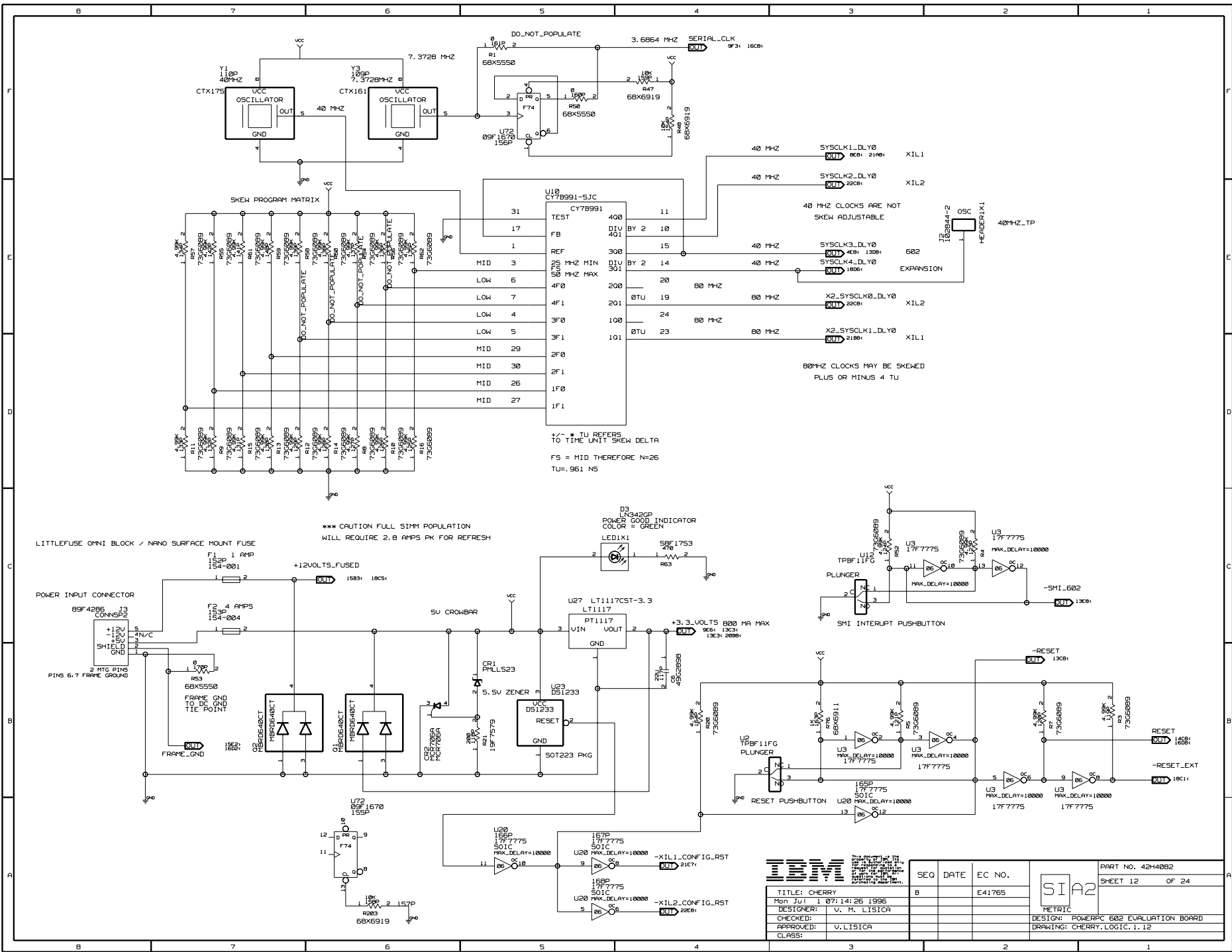






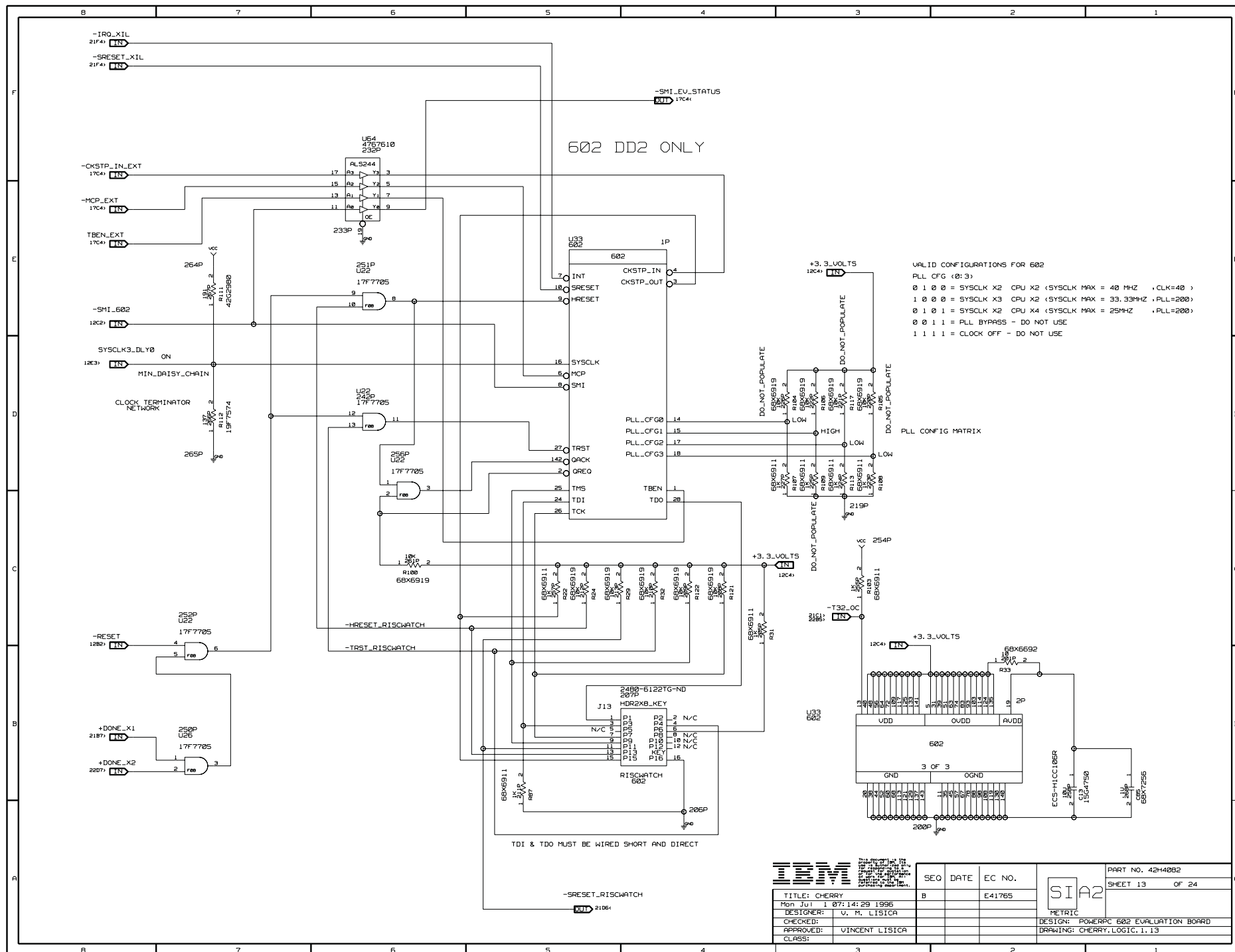


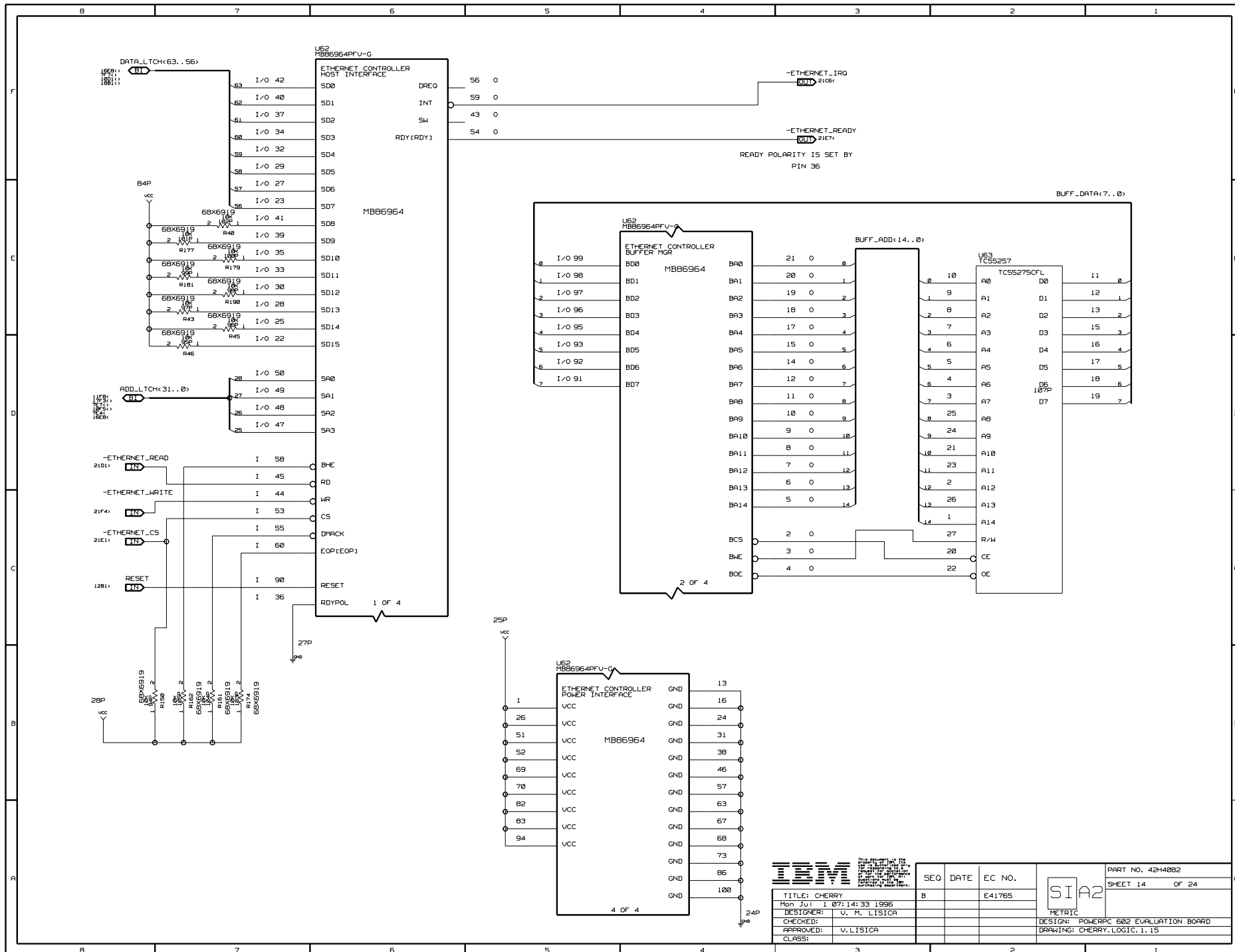
TITLE: CHERRY		SEQ	DATE	EC NO.	SIA2	PART NO. 42H40B2	
DESIGNER: V. M. LISTICA	Rev: 1.0	B		E41765		SHEET 10	OF 24
CHECKED: V. M. LISTICA					METRIC		
APPROVED: V. LISTICA					DESIGN: POWERPC 602 EVALUATION BOARD		
CLASS:					DRAWING: CHERRY.LOGIC.1.10		



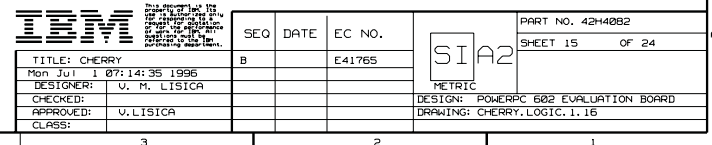


		IBM Corp. P.O. Box 114 Armonk, NY 10504 U.S.A. Tel: 914 899 1900 Fax: 914 899 1611		SEQ	DATE	EC NO.		PART NO. 42H40B2	
TITLE: CHERRY		B		E41765	SHEET 12 OF 24				
Mon Jul 1 07:14:26 1996						METRIC			
DESIGNER: V. M. LISICA						DESIGN: POWERPC 602 EVALUATION BOARD			
CHECKED: V. LISICA						DRAWING: CHERRY.LOGIC.1.12			
APPROVED: V. LISICA									
CLASS:									



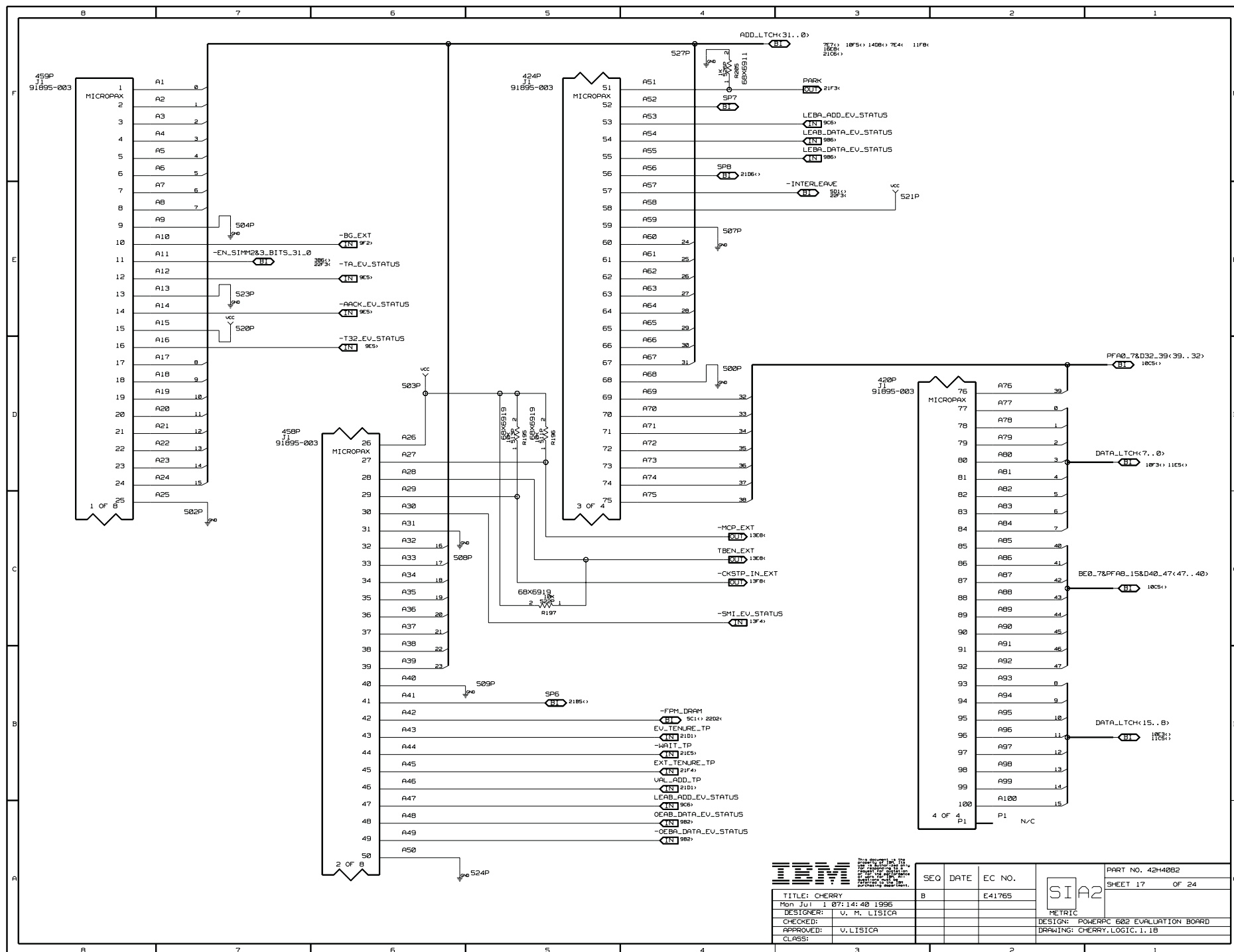


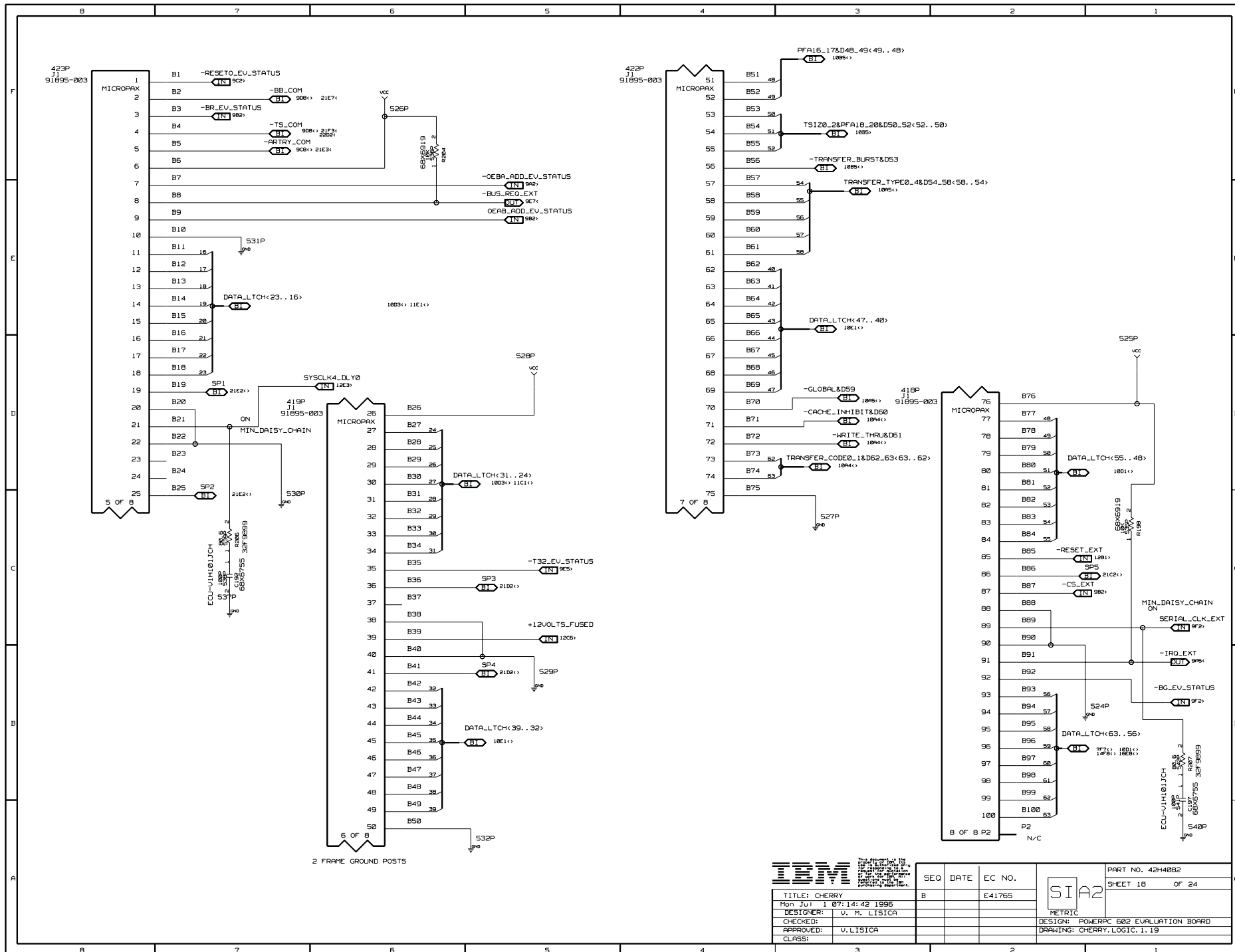
		SEQ DATE EC NO.		PART NO. 42H4082	
TITLE: CHERRY Mon Jul 1 07:14:33 1996 DESIGNER: V. M. LISICA CHECKED: V. M. LISICA APPROVED: V. M. LISICA CLASS:		B		E41765	
SIA2		METRIC		SHEET 14 OF 24	
DESIGN: POWERPC 602 EVALUATION BOARD		DRAWING: CHERRY.LOGIC.1.15			



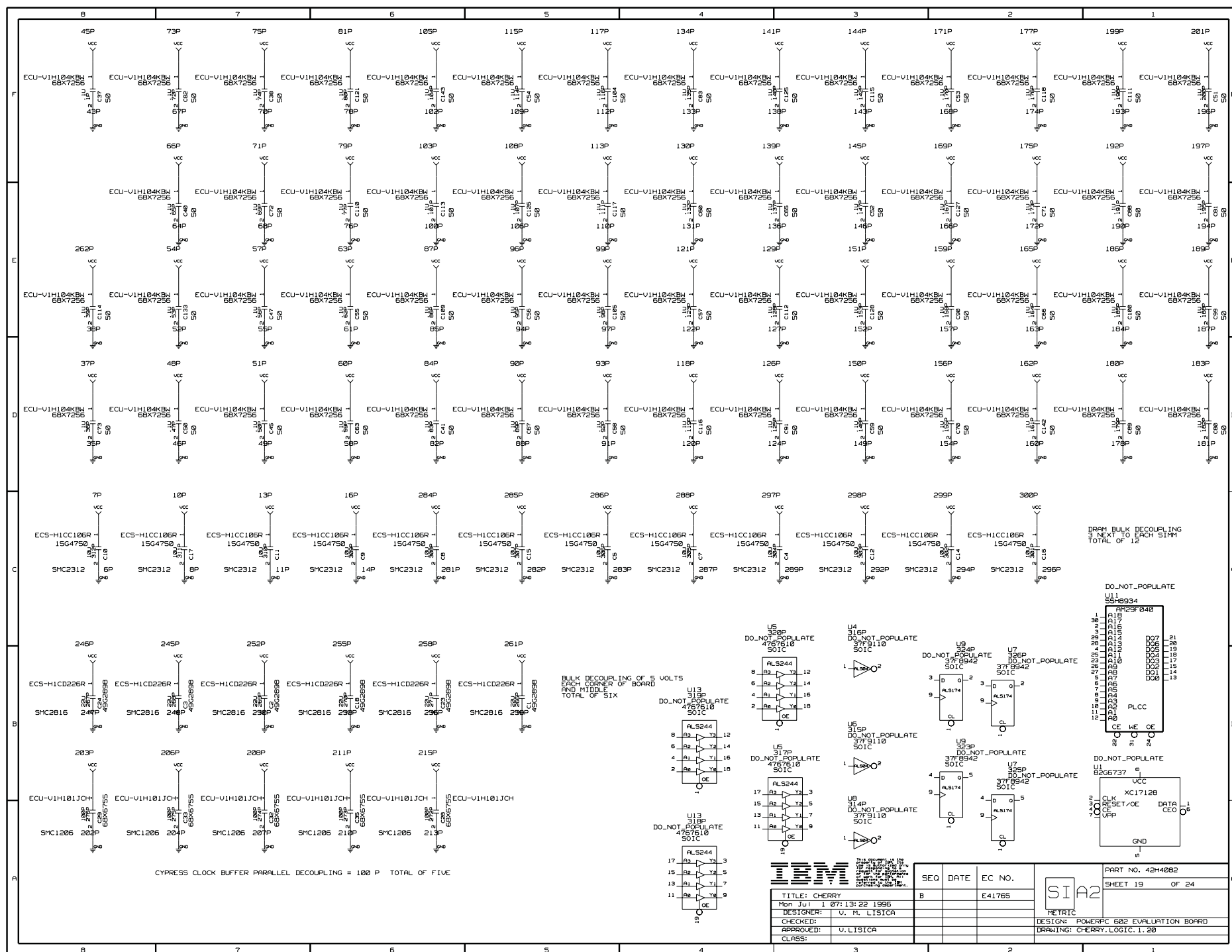


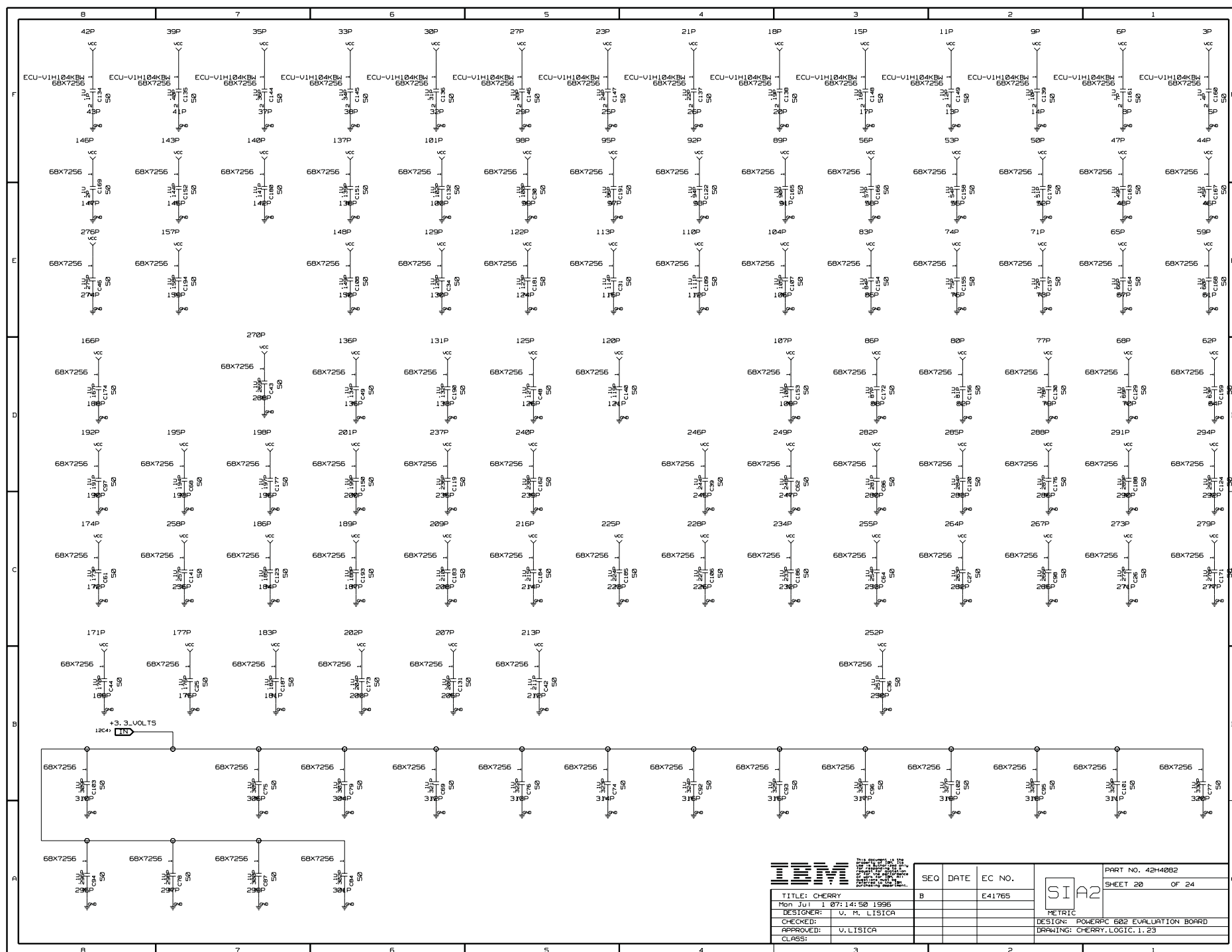


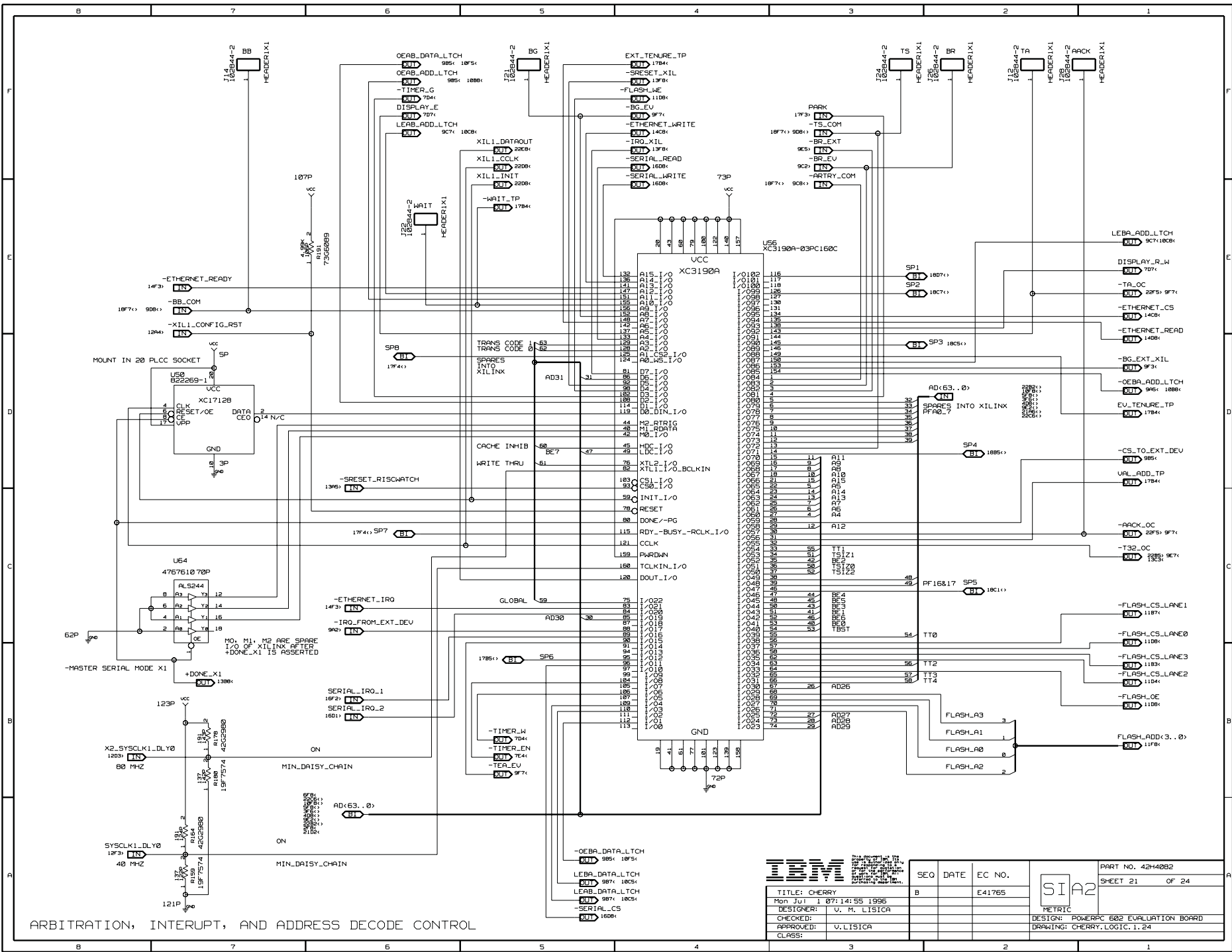







TITLE: CHERRY DATE: 107:14:42 1996 DESIGNER: V. M. LISICA CHECKED: V. LISICA APPROVED: V. LISICA CLASS:		SEQ: B DATE:		EC NO.: E41765 DATE:	
PART NO. 42H40B2 SHEET 18 OF 24		DESIGN: POWERPC 602 EVALUATION BOARD DRAWING: CHERRY.LOGIC.1.19			







ARBITRATION, INTERRUPT, AND ADDRESS DECODE CONTROL

		<small>THIS DOCUMENT CONTAINS NEITHER RECOMMENDATIONS NOR CONCLUSIONS OF THE CORPORATION. IT IS THE PROPERTY OF INTERNATIONAL BUSINESS MACHINES CORPORATION AND IS LOANED TO YOUR ORGANIZATION. IT AND ITS CONTENTS ARE NOT TO BE REPRODUCED IN ANY MANNER WITHOUT THE EXPRESS WRITTEN AUTHORIZATION OF INTERNATIONAL BUSINESS MACHINES CORPORATION.</small>		SEQ		DATE	EC NO.		PART NO. 42H4082	
TITLE: CHERRY		Mon Jul 1 07:14:55 1996		B		E41765	SHEET 21 OF 24			
DESIGNER: V. M. LISICA							METRIC			
CHECKED: V. LISICA										
APPROVED: V. LISICA							DESIGN: POWERPC 602 EVALUATION BOARD			
CLASS:							DRAWING: CHERRY.LOGIC.1.24			



[illegible]

	B	7	6	5	4	3	2	1
	*** Unit Cross-Reference *** --- For the entire design ---							
C1	CAPACITOR 1985	C185 CAPACITOR 2004	J4 HOR2K1 385	J4 HOR2K1 385	R82 RESISTOR 884	R190 RESISTOR 14E7		
C2	CAPACITOR 1987	C187 CAPACITOR 2002	J5 HOR2K1 502	J5 HOR2K1 502	R83 RESISTOR 884	R191 RESISTOR 21E8		
C3	CAPACITOR 1987	C188 CAPACITOR 2005	J6 HOR2K1 502	J6 HOR2K1 502	R84 RESISTOR 804	R192 RESISTOR 9F3		
C4	CAPACITOR 19C3	C189 CAPACITOR 19E6	J7 HEADR1K1 20E7	J7 HEADR1K1 20E7	R85 RESISTOR 4C5	R193 RESISTOR 16C7		
C5	CAPACITOR 19C5	C118 CAPACITOR 19E6	J8 HEADR1K1 20E5	J8 HEADR1K1 20E5	R86 RESISTOR 8C5	R194 RESISTOR 16C7		
C6	CAPACITOR 12B4	C111 CAPACITOR 19F1	J9 HEADR1K1 20C6	J9 HEADR1K1 20C6	R87 RESISTOR 13B5	R195 RESISTOR 17D5		
C7	CAPACITOR 19C4	C112 CAPACITOR 19C3	J10 HOR2K1 20C2	J10 HOR2K1 20C2	R88 RESISTOR 8B2	R196 RESISTOR 17D5		
C8	CAPACITOR 19C5	C113 CAPACITOR 19C5	J11 HEADR1K1 19E5	J11 HEADR1K1 19E5	R89 RESISTOR 4B2	R197 RESISTOR 17C5		
C9	CAPACITOR 19C6	C114 CAPACITOR 19E8	J12 HEADR1K1 21F2	J12 HEADR1K1 21F2	R90 RESISTOR 4D2	R198 RESISTOR 18C1		
C10	CAPACITOR 19C6	C115 CAPACITOR 19F3	J13 HOR2K1 19E5	J13 HOR2K1 19E5	R91 RESISTOR 8B2	R199 RESISTOR 11D7		
C11	CAPACITOR 19C7	C116 CAPACITOR 19D4	J14 HEADR1K1 21F7	J14 HEADR1K1 21F7	R92 RESISTOR 4C4	R200 RESISTOR 11E3		
C12	CAPACITOR 19C3	C117 CAPACITOR 19E5	J15 DCON15P4 15C2	J15 DCON15P4 15C2	R93 RESISTOR 4B2	R201 RESISTOR 11B3		
C13	CAPACITOR 19B2	C118 CAPACITOR 19F2	J16 HOR2K1 5B0	J16 HOR2K1 5B0	R94 RESISTOR 8C4	R202 RESISTOR 11B7		
C14	CAPACITOR 19C2	C119 CAPACITOR 2006	J17 HOR2K1 5B3	J17 HOR2K1 5B3	R95 RESISTOR 8D2	R203 RESISTOR 12A6		
C15	CAPACITOR 19C5	C120 CAPACITOR 2002	J18 HOR2K1 2C1	J18 HOR2K1 2C1	R96 RESISTOR 4C4	R204 RESISTOR 19F6		
C16	CAPACITOR 19C2	C121 CAPACITOR 19F6	J19 HOR2K1 6B3	J19 HOR2K1 6B3	R97 RESISTOR 4D2	R205 RESISTOR 17F4		
C17	CAPACITOR 19C7	C122 CAPACITOR 20E4	J20 HOR2K1 6C1	J20 HOR2K1 6C1	R98 RESISTOR 8C4	R206 RESISTOR 18C7		
C18	CAPACITOR 19B6	C123 CAPACITOR 20C7	J21 HEADR1K1 21F5	J21 HEADR1K1 21F5	R99 RESISTOR 8D2	R207 RESISTOR 18B1		
C19	CAPACITOR 19C3	C124 CAPACITOR 20D1	J22 HEADR1K1 21E5	J22 HEADR1K1 21E5	R100 RESISTOR 13C6	R208 RESISTOR 16C7		
C20	CAPACITOR 19C7	C125 CAPACITOR 19F3	J23 RJ45L8 15E2	J23 RJ45L8 15E2	R101 RESISTOR 9D5	T1 PE65723 15C4		
C21	CAPACITOR 19B7	C126 CAPACITOR 19E5	J24 HEADR1K1 21F3	J24 HEADR1K1 21F3	R102 RESISTOR 7E6	U1 AC17128 19B1		
C22	CAPACITOR 19C7	C127 CAPACITOR 19E2	J25 DCON6P4 16C2	J25 DCON6P4 16C2	R103 RESISTOR 13C3	U2 PLUNGER 12B4		
C23	CAPACITOR 19C7	C128 CAPACITOR 19C3	J26 HEADR1K1 21F2	J26 HEADR1K1 21F2	R104 RESISTOR 13D3	U3 06 12B2 12B3 12C2 12C3		
C24	CAPACITOR 19B6	C129 CAPACITOR 20D1	J27 DCON6P4 16F2	J27 DCON6P4 16F2	R105 RESISTOR 13D3	U4 AL504 19C3		
C25	CAPACITOR 19B6	C130 CAPACITOR 20D2	J28 HEADR1K1 21F2	J28 HEADR1K1 21F2	R106 RESISTOR 13D3	U5 AL5244 19B4 19C4		
C26	CAPACITOR 20C1	C131 MPR04BCT 12B6	Q1 MPR04BCT 12B6	Q1 MPR04BCT 12B6	R107 RESISTOR 13D3	U6 AL504 19B3		
C27	CAPACITOR 20C1	C132 CAPACITOR 20C5	Q2 MPR04BCT 12B7	Q2 MPR04BCT 12B7	R108 RESISTOR 13D3	U7 AL5174 19B2		
C28	CAPACITOR 20C1	C133 CAPACITOR 19E7	R1 RESISTOR 12F5	R1 RESISTOR 12F5	R109 RESISTOR 13D3	U8 AL504 19B3		
C29	CAPACITOR 19A8	C134 CAPACITOR 20F9	R2 RESISTOR 15D3	R2 RESISTOR 15D3	R110 RESISTOR 4B6	U9 AL5174 19B2 19C2		
C30	CAPACITOR 19A8	C135 CAPACITOR 20F7	R3 RESISTOR 12B1	R3 RESISTOR 12B1	R111 RESISTOR 13C7	U10 CY78B91 12E5		
C31	CAPACITOR 20E5	C136 CAPACITOR 20F6	R4 RESISTOR 13C7	R4 RESISTOR 13C7	R112 RESISTOR 13C7	U11 ANQ9F84B9 19C1		
C32	CAPACITOR 19A7	C137 CAPACITOR 20F4	R5 RESISTOR 12B3	R5 RESISTOR 12B3	R113 RESISTOR 13D3	U12 PLUNGER 12C3		
C33	CAPACITOR 20E5	C138 CAPACITOR 20F3	R6 RESISTOR 8E3	R6 RESISTOR 8E3	R114 RESISTOR 4B6	U13 AL5244 19B4 19B4		
C34	CAPACITOR 20E6	C139 CAPACITOR 20F2	R7 RESISTOR 12B2	R7 RESISTOR 12B2	R115 RESISTOR 4D6	U14 F251 22B7		
C35	CAPACITOR 19A6	C140 CAPACITOR 20D4	R8 RESISTOR 12D6	R8 RESISTOR 12D6	R116 RESISTOR 9D4	U15 06 5C4		
C36	CAPACITOR 20B3	C141 CAPACITOR 20C7	R9 RESISTOR 13D3	R9 RESISTOR 13D3	R117 RESISTOR 13D3	U16 F251 22B7		
C37	CAPACITOR 19B8	C142 CAPACITOR 19D2	R10 RESISTOR 12D6	R10 RESISTOR 12D6	R118 RESISTOR 8D6	U17 AL5244 9C7 22D7		
C38	CAPACITOR 19F7	C143 CAPACITOR 19F6	R11 RESISTOR 12D7	R11 RESISTOR 12D7	R119 RESISTOR 4C7	U18 74LVX3.384 3D3		
C39	CAPACITOR 20B4	C144 CAPACITOR 20F7	R12 RESISTOR 12D7	R12 RESISTOR 12D7	R120 RESISTOR 9D4	U19 74LVX3.384 3C3		
C40	CAPACITOR 19E7	C145 CAPACITOR 20F6	R13 RESISTOR 12D7	R13 RESISTOR 12D7	R121 RESISTOR 13C4	U20 06 12A3 12A6		
C41	CAPACITOR 19D6	C146 CAPACITOR 20F5	R14 RESISTOR 12D6	R14 RESISTOR 12D6	R122 RESISTOR 13C4	U21 KC138A 22C3		
C42	CAPACITOR 20B6	C147 CAPACITOR 20F5	R15 RESISTOR 12D7	R15 RESISTOR 12D7	R123 RESISTOR 8C7	U22 F88 13C7 13D6 13D6 13E6		
C43	CAPACITOR 20E7	C148 CAPACITOR 20F3	R16 RESISTOR 12D6	R16 RESISTOR 12D6	R124 RESISTOR 13C4	U23 DS1233 12B5		
C44	CAPACITOR 20E8	C149 CAPACITOR 20F2	R17 RESISTOR 5C2	R17 RESISTOR 5C2	R125 RESISTOR 9D5	U24 74FCT162H72 4E5		
C45	CAPACITOR 20E8	C150 CAPACITOR 20D6	R18 RESISTOR 5D2	R18 RESISTOR 5D2	R126 RESISTOR 9C5	U25 74FCT162H72 8E5		
C46	CAPACITOR 20E8	C151 CAPACITOR 20C6	R19 RESISTOR 2B4	R19 RESISTOR 2B4	R127 RESISTOR 9F4	U26 F88 13B7		
C47	CAPACITOR 20E8	C152 CAPACITOR 20E7	R20 RESISTOR 12B4	R20 RESISTOR 12B4	R128 RESISTOR 9F4	U27 L11117 12C5		
C48	CAPACITOR 20E8	C153 CAPACITOR 20D3	R21 RESISTOR 12B5	R21 RESISTOR 12B5	R129 RESISTOR 2F3	U28 74LVX3.384 5D6		
C49	CAPACITOR 20E5	C154 CAPACITOR 20C3	R22 RESISTOR 13C5	R22 RESISTOR 13C5	R130 RESISTOR 2F3	U29 74LVX3.384 5D6		
C50	CAPACITOR 20E5	C155 CAPACITOR 20E2	R23 RESISTOR 2B3	R23 RESISTOR 2B3	R131 RESISTOR 2F3	U30 74FCT162H72 4E3		
C51	CAPACITOR 19F1	C156 CAPACITOR 20D2	R24 RESISTOR 13C5	R24 RESISTOR 13C5	R132 RESISTOR 2B4	U31 74FCT162H72 8E3		
C52	CAPACITOR 19C3	C157 CAPACITOR 20E2	R25 RESISTOR 6A3	R25 RESISTOR 6A3	R133 RESISTOR 8B4	U32 74FCT162H72 4C7		
C53	CAPACITOR 19F2	C158 CAPACITOR 20E2	R26 RESISTOR 2B3	R26 RESISTOR 2B3	R134 RESISTOR 7D4	U33 6B2 9C4 12B3 13E5		
C54	CAPACITOR 19F5	C159 CAPACITOR 20D1	R27 RESISTOR 6A3	R27 RESISTOR 6A3	R135 RESISTOR 2B3	U34 74FCT162H72 8E7		
C55	CAPACITOR 19E6	C160 CAPACITOR 20F1	R28 RESISTOR 2B4	R28 RESISTOR 2B4	R136 RESISTOR 3C5	U35 M48182 7E3		
C56	CAPACITOR 19E6	C161 CAPACITOR 20F1	R29 RESISTOR 19C4	R29 RESISTOR 19C4	R137 RESISTOR 19C3	U36 74FCT16226B 2F3		
C57	CAPACITOR 19E4	C162 CAPACITOR 20D5	R30 RESISTOR 6A4	R30 RESISTOR 6A4	R138 RESISTOR 10F3	U37 74FCT16226B 6F7		
C58	CAPACITOR 19D5	C163 CAPACITOR 20E1	R31 RESISTOR 13C4	R31 RESISTOR 13C4	R139 RESISTOR 10F3	U38 74LVX3.384 3D4		
C59	CAPACITOR 19D5	C164 CAPACITOR 20E1	R32 RESISTOR 13C4	R32 RESISTOR 13C4	R140 RESISTOR 15D4	U39 74LVX3.384 5D7		
C60	CAPACITOR 19C4	C165 CAPACITOR 20E3	R33 RESISTOR 13B2	R33 RESISTOR 13B2	R141 RESISTOR 10E5	U40 74FCT16226B 2F7		
C61	CAPACITOR 20D9	C166 CAPACITOR 20E3	R34 POT 7C7	R34 POT 7C7	R142 RESISTOR 10E5	U41 74FCT16226B 6F3		
C62	CAPACITOR 20D9	C167 CAPACITOR 20E1	R35 RESISTOR 5B6	R35 RESISTOR 5B6	R143 RESISTOR 10B5	U42 74LVX3.384 5C4		
C63	CAPACITOR 19D6	C168 CAPACITOR 20E1	R36 RESISTOR 15D4	R36 RESISTOR 15D4	R144 RESISTOR 10B5	U43 74LVX3.384 5E7		
C64	CAPACITOR 20D3	C169 CAPACITOR 20E8	R37 RESISTOR 19F3	R37 RESISTOR 19F3	R145 RESISTOR 10C2	U44 EDO.BP332 2F6		
C65	CAPACITOR 19D6	C170 CAPACITOR 20E2	R38 RESISTOR 19F3	R38 RESISTOR 19F3	R146 RESISTOR 10C2	U45 EDO.BP332 2F2		
C66	CAPACITOR 19C3	C171 CAPACITOR 20C1	R39 RESISTOR 18B7	R39 RESISTOR 18B7	R147 RESISTOR 10C3	U46 EDO.BP332 6F6		
C67	CAPACITOR 19D6	C172 CAPACITOR 20D3	R40 RESISTOR 18C4	R40 RESISTOR 18C4	R148 RESISTOR 10C4	U47 EDO.BP332 6F3		
C68	CAPACITOR 20E7	C173 CAPACITOR 20B6	R41 RESISTOR 18B7	R41 RESISTOR 18B7	R149 RESISTOR 15C4	U48 74LVX3.383 5F3		
C69	CAPACITOR 20E7	C174 CAPACITOR 20D8	R42 RESISTOR 18B7	R42 RESISTOR 18B7	R150 RESISTOR 14B7	U49 74LVX3.383 5F2		
C70	CAPACITOR 20E7	C175 CAPACITOR 15C3	R43 RESISTOR 14E7	R43 RESISTOR 14E7	R151 RESISTOR 18C7	U50 AC17128 21D7		
C71	CAPACITOR 20B6	C176 CAPACITOR 20D2	R44 RESISTOR 18B7	R44 RESISTOR 18B7	R152 RESISTOR 10C7	U51 74ABT16501 10F6		
C72	CAPACITOR 19C7	C177 CAPACITOR 20D7	R45 RESISTOR 14D7	R45 RESISTOR 14D7	R153 RESISTOR 10B7	U52 74ABT16501 10C5		
C73	CAPACITOR 19C7	C178 CAPACITOR 15C3	R46 RESISTOR 14D7	R46 RESISTOR 14D7	R154 RESISTOR 10B7	U53 74ABT16501 10E2		
C74	CAPACITOR 20B6	C179 CAPACITOR 15C4	R47 RESISTOR 12F4	R47 RESISTOR 12F4	R155 RESISTOR 10C3	U54 74ABT16501 10E4		
C75	CAPACITOR 20B7	C180 CAPACITOR 20E7	R48 RESISTOR 12F4	R48 RESISTOR 12F4	R156 RESISTOR 10C3	U55 PE65745 15C3		
C76	CAPACITOR 20B6	C181 CAPACITOR 20E5	R49 RESISTOR 15D3	R49 RESISTOR 15D3	R157 RESISTOR 10B5	U56 KC138B 21E4		
C77	CAPACITOR 20B1	C182 CAPACITOR 15C2	R50 RESISTOR 12F5	R50 RESISTOR 12F5	R158 RESISTOR 10C5	U57 74ABT16501 10F4		
C78	CAPACITOR 20B7	C183 CAPACITOR 20D5	R51 RESISTOR 15D3	R51 RESISTOR 15D3	R159 RESISTOR 21A7	U58 74ABT16501 10F2		
C79	CAPACITOR 20B6	C184 CAPACITOR 20C5	R52 RESISTOR 15C4	R52 RESISTOR 15C4	R160 RESISTOR 15C4	U59 74ABT16501 10B6		
C80	CAPACITOR 19E1	C185 CAPACITOR 20C4	R53 RESISTOR 12B7	R53 RESISTOR 12B7	R161 RESISTOR 14B7	U60 74ABT16501 10C5		
C81	CAPACITOR 19E1	C186 CAPACITOR 20C3	R54 RESISTOR 12E6	R54 RESISTOR 12E6	R162 RESISTOR 14B7	U61 M48206 16C3		
C82	CAPACITOR 19F7	C187 CAPACITOR 20B7	R55 RESISTOR 12E7	R55 RESISTOR 12E7	R163 RESISTOR 15D7	U62 M86664 14B5 14E5 14F7 15D6		
C83	CAPACITOR 19F4	C188 CAPACITOR 20D1	R56 RESISTOR 12E6	R56 RESISTOR 12E6	R164 RESISTOR 21A7	U63 TC5557 14C2		
C84	CAPACITOR 20A6	C189 CAPACITOR 20E4	R57 RESISTOR 12E7	R57 RESISTOR 12E7	R165 RESISTOR 15D7	U64 AL5244 13F6 21C7		
C85	CAPACITOR 13B1	C190 CAPACITOR 20D6	R58 RESISTOR 12E7	R58 RESISTOR 12E7	R166 RESISTOR 10C3	U65 AL5244 8B4 9F3		
C86	CAPACITOR 20D3	C191 CAPACITOR 20C5	R59 RESISTOR 12E7	R59 RESISTOR 12E7	R167 RESISTOR 10C4	U66 PC16552 16F6		
C87	CAPACITOR 20D3	C192 CAPACITOR 19C7	R60 RESISTOR 10C2	R60 RESISTOR 10C2	R168 RESISTOR 10C2	U67 ANQ9F84B9 11E2		
C88	CAPACITOR 19E1	C193 CAPACITOR 20C6	R61 RESISTOR 12E7	R61 RESISTOR 12E7	R169 RESISTOR 10C2	U68 ANQ9F84B9 11C2		
C89	CAPACITOR 19D1	C194 CAPACITOR 20E7	R62 RESISTOR 12E6	R62 RESISTOR 12E6	R170 RESISTOR 10A6	U69 ANQ9F84B9 11E6		
C90	CAPACITOR 19E2	C195 CAPACITOR 19F3	R63 RESISTOR 12C4	R63 RESISTOR 12C4	R171 RESISTOR 10A6	U70 ANQ9F84B9 11C5		
C91	CAPACITOR 19D3	C196 CAPACITOR 15E4	R64 RESISTOR 20C7	R64 RESISTOR 20C7	R172 RESISTOR 10D5	U71 MAX208 16F3		
C92	CAPACITOR 20B4	C197 CAPACITOR 19A1	R65 RESISTOR 22C7	R65 RESISTOR 22C7	R173 RESISTOR 10C5	U72 F74 12A6 12F5		
C93	CAPACITOR 20B4	C198 CAPACITOR 15F3	R66 RESISTOR 6A3	R66 RESISTOR 6A3	R174 RESISTOR 14B7	U73 AL5244 5C4 8F6		
C94	CAPACITOR 20B4	C199 CAPACITOR 16F2	R67 RESISTOR 20D7	R67 RESISTOR 20D7	R175 RESISTOR 15B4	U74 AL504 3B6 3B2 3B6 20A6		
C95	CAPACITOR 20B6	CR1 ZENER2 12B5	R68 RESISTOR 2B1	R68 RESISTOR 2B1	R176 RESISTOR 15C7	Y1 05CHALF219A 12F7		
C96	CAPACITOR 20B6	CR2 MCF08A 12B6	R69 RESISTOR 14E7	R69 RESISTOR 14E7	R177 RESISTOR 14C7	Y2 CRISTA2 15B7		
C97	CAPACITOR 20D9	D1 LED1K1 15D3	R70 RESISTOR 6B1	R70 RESISTOR 6B1	R178 RESISTOR 21B7	Y3 05CHALF219A 12F6		
C98	CAPACITOR 20D9	D2 LED1K1 5C3	R71 RESISTOR 22C7	R71 RESISTOR 22C7	R179 RESISTOR 14E7			
C99	CAPACITOR 19E1	D3 LED1K1 12C5	R72 RESISTOR 2B1	R72 RESISTOR 2B1	R180 RESISTOR 14E7			
C100	CAPACITOR 19E1	D4 LED1K1 15C3	R73 RESISTOR 6B1	R73 RESISTOR 6B1	R181 RESISTOR 14E7			
C101	CAPACITOR 19E1	D5 LED1K1 15D3	R74 RESISTOR 22C7	R74 RESISTOR 22C7	R182 RESISTOR 14E7			
C102	CAPACITOR 19E1	DS1 BPC16117N 7E5	R75 RESISTOR 10C5	R75 RESISTOR 10C5	R183 RESISTOR 10C5			
C103	CAPACITOR 19E1	F1 FUSE 12C7	R76 RESISTOR 12B3	R76 RESISTOR 12B3	R184 RESISTOR 10C3			
C104	CAPACITOR 20B2	F2 FUSE 12C7	R77 RESISTOR 12B3	R77 RESISTOR 12B3	R185 RESISTOR 10C3			
C105	CAPACITOR 20B2	J1 MPR200 17D3 17D7 17F5 17F8 18D3 18D7 18F5	R78 RESISTOR 22E7	R78 RESISTOR 22E7	R186 RESISTOR 10C7			
C106	CAPACITOR 20B2	J2 HEADR1K1 19F9	R79 RESISTOR 2C1	R79 RESISTOR 2C1	R187 RESISTOR 10B7			
C107	CAPACITOR 20B2	J3 CON4P2 12C8	R80 RESISTOR 1C1	R80 RESISTOR 1C1	R188 RESISTOR 10			