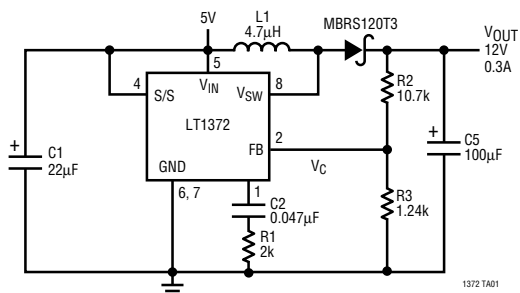


**Boost: +V to Higher +V (i.e. 5V to 12V), Flyback: +V to any +V or -V and Multiple Output (i.e. 5V to  $\pm 12V$ )**

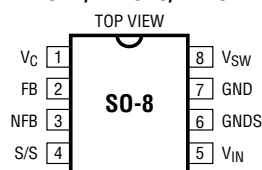
SWITCHING FREQUENCY	SWITCH CURRENT							
	1.25A	2.5A	3A	4A	5A	7.5A	8A	10A
40kHz	LT <sup>®</sup> 1072	LT1071			LT1070			
60kHz	LT1082*			LT1271			LT1270	LT1270A
100kHz	LT1172	LT1171		LT1269	LT1170			
150kHz						LT1268		
250kHz	LT1373							
500kHz	LT1372		LT1371					
1MHz	LT1377							

\*1A Switch Current

### LT1372 and LT1377: 500kHz and 1MHz 5V-to-12V Boost Converter

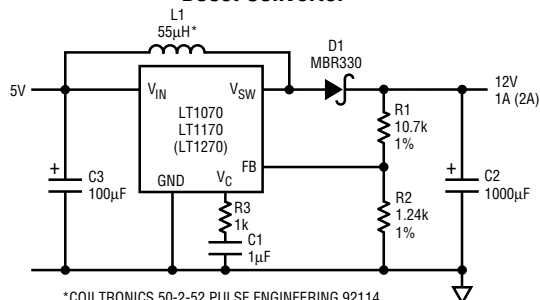


### LT1372/LT1373/LT1377



- Fixed 250kHz, 500kHz or 1MHz Current Mode PWM
- Uses Tiny 4.7μH Inductor
- All Surface Mount Components
- 1.5A On-Chip Power Switch
- 3mA Quiescent Current; 10μA in Shutdown (LT1372)
- 1mA Quiescent Current (LT1373)
- Easily Synchronizable
- Regulates Positive or Negative Outputs
- SO-8 Package

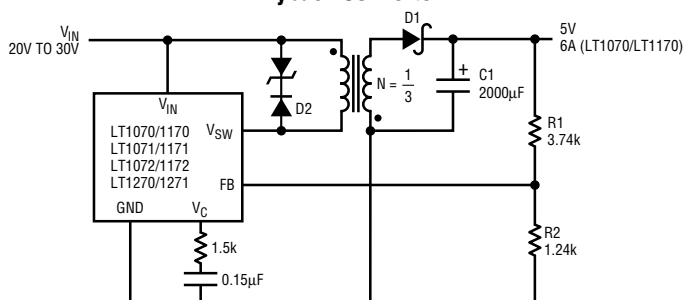
### Boost Converter



\*COILTRONICS 50-2-52 PULSE ENGINEERING 92114  
COMPONENTS ARE SELECTED FOR THE LT1170

LTIC ISRSG • 01

### Flyback Converter



LTIC ISRSG • 02

## Input Voltage Capability

DEVICE		INPUT (V)		MAXIMUM SWITCH VOLTAGE (V)
		MIN	MAX	
BOOST	LT1070/71/72	3	40	65
	LT1170/71/72	3	40	65
	LT1268/69/70/71	3	30	60
	LT1270A	3	30	60
	LT1070/71/72HV	3	60	75
	LT1170/71/72HV	3	60	75
	LT1082	3	75	100
	LT1372/73/77	2.7	30	35
BUCK	LT1074/76	8	45	75
	LT1074/6HV	8	64	84
	LT1176	8	35	50
	LT1376	6	30	30

## SwitcherCAD Design Software

SwitcherCAD is a powerful design tool which eases the task of selecting topologies, calculating operating points, and specifying component values and part numbers for the switching regulators listed above. Please contact your local Linear Technology Sales Rep for a copy of this program.

## Micropower Switching Regulators

For Micropower and small battery powered applications, please see the LT1073, LT1173, LT1110, LT1111, LT1300, LT1301, LT1302 and LT1303. For flash memory applications, see the LT1109, LT1109A, LT1301, LT1105 and LTC<sup>®</sup>1262.

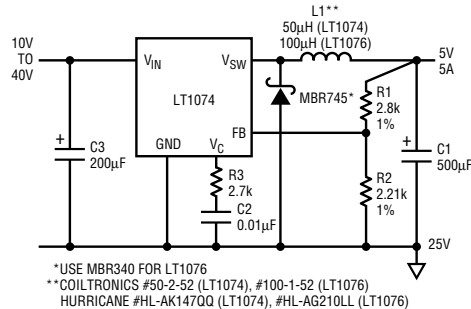
LT, LTC and LT are registered trademarks of Linear Technology Corporation.

Rev F 0197

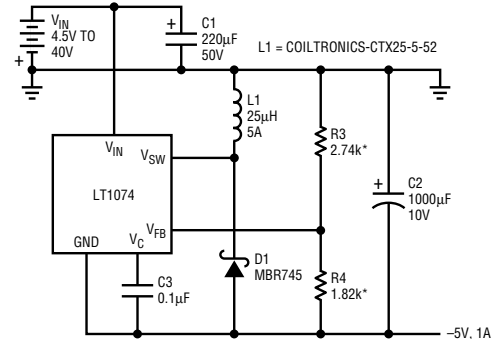
**Step-Down: +V to Lower +V (i.e. 12V to 5V), Inverting: +V to -V (i.e. 5V to -5V or -12V)**

### 5A Step-Down Converter

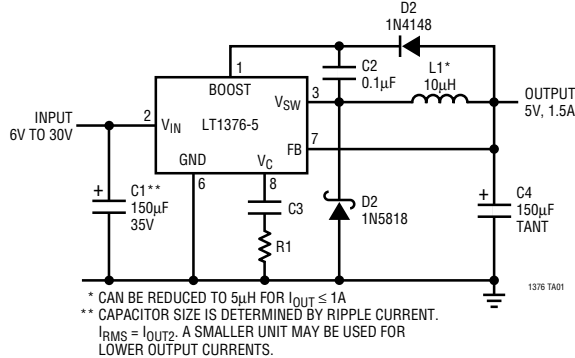
SWITCHING FREQUENCY	SWITCH CURRENT			
	1.2A	1.5A	2A	5A
100kHz	LT1176		LT1076	LT1074
500kHz		LT1376		



### Positive-to-Negative Converter

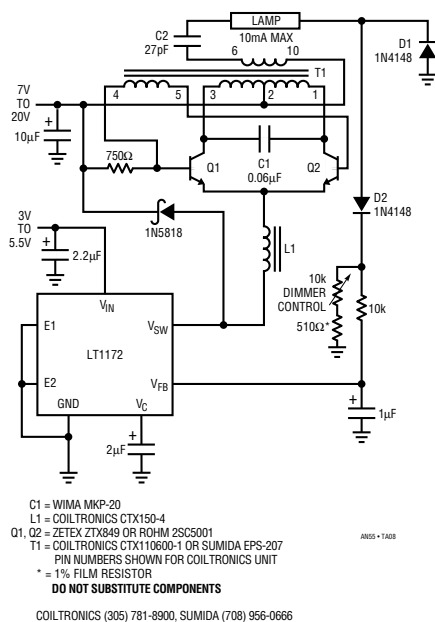


### LT1376: 500kHz 5V Buck Converter

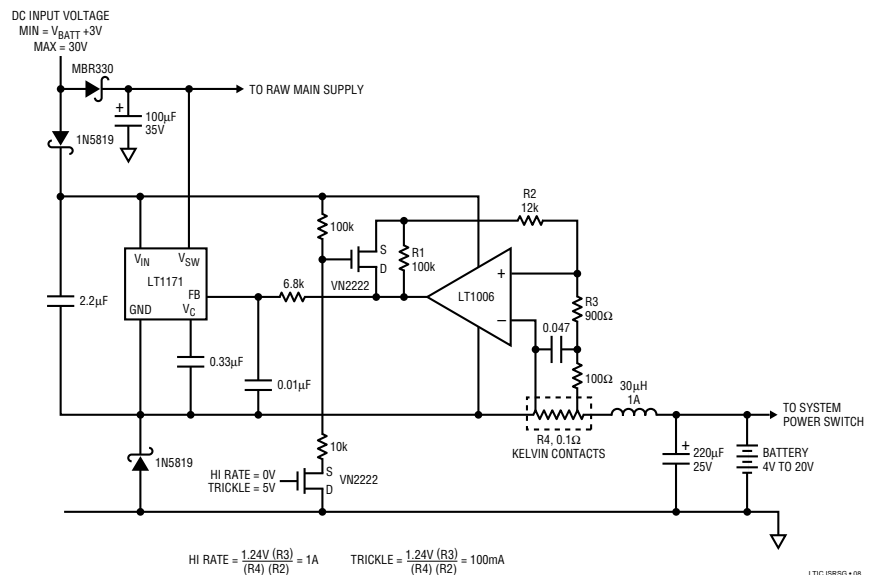


- Fixed 500kHz Current Mode PWM
- Uses Tiny 5µH Inductor
- All Surface Mount Components
- 1.5A 0.4Ω On-Chip Power Switch
- 2mA Quiescent Current; 20µA in Shutdown
- Easily Synchronizable
- SO-8 Package

### A 92% Efficient CCFL Supply for up to 10mA Loads



### High Efficiency Dual Rate Battery Charger



Details on these and many other applications appear in the individual device Data Sheets and Application Notes 19, 25, 29, 30, 35, 44, 46, 49, 51, 54, 55 and 58.