

SN54ACT1284, SN74ACT1284 7-BIT BUS INTERFACES WITH 3-STATE OUTPUTS

SCAS459B – NOVEMBER 1994 – REVISED APRIL 1996

- 3-State Outputs Directly Drive Bus Lines
- Flow-Through Architecture Optimizes PCB Layout
- Center-Pin V_{CC} and GND Configurations Minimize High-Speed Switching Noise
- ESD Protection Exceeds 2000 V Per MIL-STD-883, Method 3015; Exceeds 200 V Using Machine Model ($C = 200$ pF, $R = 0$)
- Complies With IEEE 1284-I (Level 1 Type) and IEEE 1284-II (Level 2 Type) Electrical Specifications
- Package Options Include Plastic Small-Outline (DW), Shrink Small-Outline (DB), Thin Shrink Small-Outline (PW), and DIP (N) Packages, Ceramic Chip Carriers (FK), Flat (W), and DIP (J) Packages

description

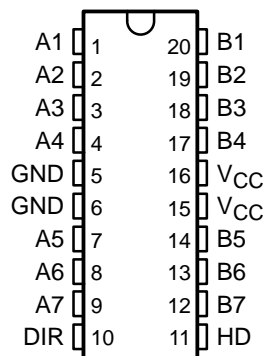
The 'ACT1284 are designed for asynchronous two-way communication between data buses. The control function minimizes external timing requirements.

The devices allow data transmission in either the A-to-B or the B-to-A direction for bits 1, 2, 3, and 4, depending on the logic level at the direction-control (DIR) input. Bits 5, 6, and 7, however, always transmit in the A-to-B direction.

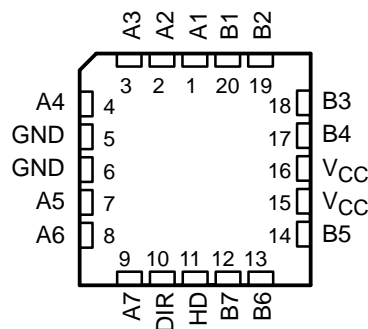
The output drive for each mode is determined by the high drive (HD) control pin. When HD is high, the high drive is delivered by the totem-pole configuration, and when HD is low, the outputs are open drain. This meets the drive requirements as specified in the IEEE 1284-I (level 1 type) and the IEEE 1284-II (level 2 type) parallel peripheral-interface specification.

The SN54ACT1284 is characterized for operation over the full military temperature range of -55°C to 125°C . The SN74ACT1284 is characterized for operation from 0°C to 70°C .

SN54ACT1284 . . . J OR W PACKAGE
SN74ACT1284 . . . DB, DW, N, OR PW PACKAGE
(TOP VIEW)



FK PACKAGE
(TOP VIEW)



FUNCTION TABLE

INPUTS		OUTPUT	MODE
DIR	HD		
L	L	Open drain	A to B: Bits 5, 6, 7
		Totem pole	B to A: Bits 1, 2, 3, 4
L	H	Totem pole	B to A: Bits 1, 2, 3, 4 and A to B: Bits 5, 6, 7
H	L	Open drain	A to B: Bits 1, 2, 3, 4, 5, 6, 7
H		Totem pole	A to B: Bits 1, 2, 3, 4, 5, 6, 7



Please be aware that an important notice concerning availability, standard warranty, and use in critical applications of Texas Instruments semiconductor products and disclaimers thereto appears at the end of this data sheet.

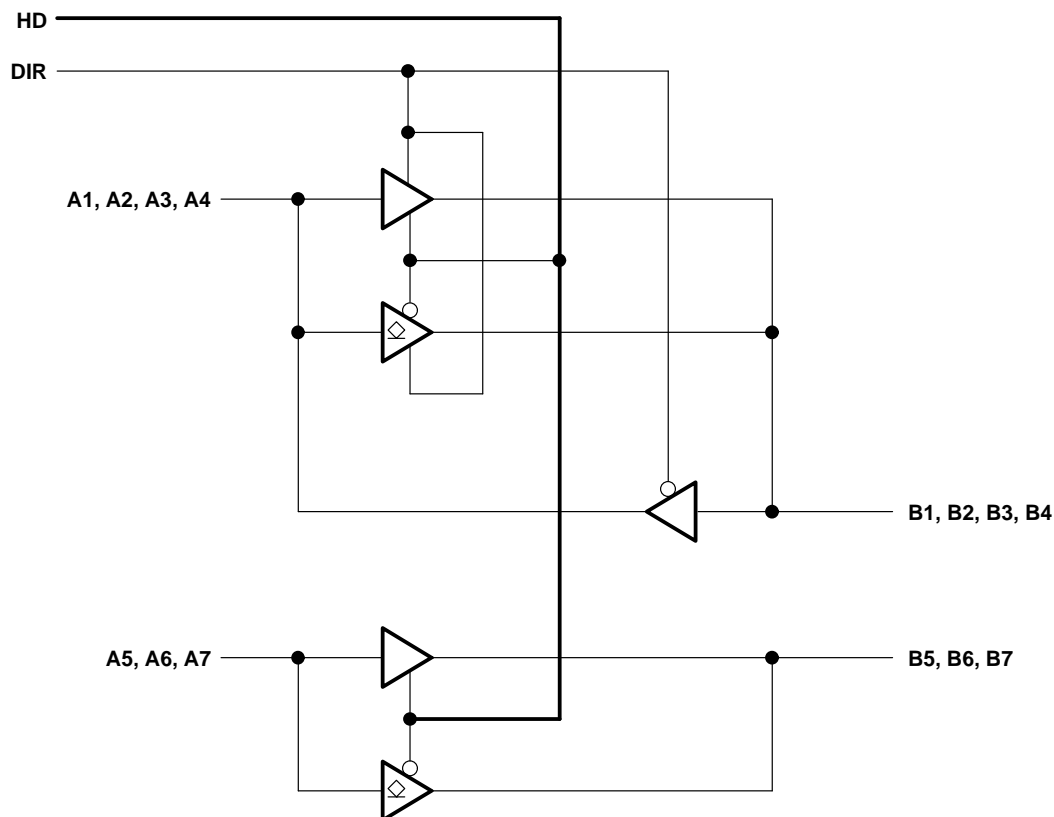
UNLESS OTHERWISE NOTED this document contains PRODUCTION DATA information current as of publication date. Products conform to specifications per the terms of Texas Instruments standard warranty. Production processing does not necessarily include testing of all parameters.

**TEXAS
INSTRUMENTS**

POST OFFICE BOX 655303 • DALLAS, TEXAS 75265

Copyright © 1996, Texas Instruments Incorporated

logic diagram (positive logic)



absolute maximum ratings over operating free-air temperature range (unless otherwise noted)[†]

Supply voltage range, V_{CC}	–0.5 V to 7 V
B-port input and output voltage range, V_I and V_O (see Notes 1 and 2)	–2 V to 7 V
A-port input and output voltage range, V_I and V_O (see Note 1)	–0.5 V to $V_{CC} + 0.5$ V
Input clamp current, I_{IK} ($V_I < 0$ or $V_I > V_{CC}$)	±20 mA
Output clamp current, I_{OK} ($V_O < 0$ or $V_O > V_{CC}$)	±50 mA
Continuous output current, I_O ($V_O = 0$ to V_{CC})	±50 mA
Continuous current through V_{CC} or GND	±200 mA
Maximum power dissipation at $T_A = 55^\circ\text{C}$ (in still air) (see Note 3):	
DB package	0.6 W
DW package	1.7 W
N package	1.3 W
PW package	0.7 W
Storage temperature range, T_{stg}	–65°C to 150°C

[†] Stresses beyond those listed under “absolute maximum ratings” may cause permanent damage to the device. These are stress ratings only, and functional operation of the device at these or any other conditions beyond those indicated under “recommended operating conditions” is not implied. Exposure to absolute-maximum-rated conditions for extended periods may affect device reliability.

- NOTES: 1. The input and output voltage ratings may be exceeded if the input and output current ratings are observed.
 2. The ac input voltage pulsewidth is limited to 20 ns if the input voltage goes more negative than –0.5 V.
 3. The maximum package power dissipation is calculated using a junction temperature of 150°C and a board trace length of 750 mils, except for the N package, which has a trace length of zero.

SN54ACT1284, SN74ACT1284

7-BIT BUS INTERFACES

WITH 3-STATE OUTPUTS

SCAS459B – NOVEMBER 1994 – REVISED APRIL 1996

recommended operating conditions

			SN54ACT1284		SN74ACT1284		UNIT
			MIN	MAX	MIN	MAX	
V _{CC}	Supply voltage		4.7	5.5	4.7	5.5	V
V _{IH}	High-level input voltage		2		2		V
V _{IL}	Low-level input voltage			0.8		0.8	V
V _I	Input voltage		0	V _{CC}	0	V _{CC}	V
V _O	Open drain output voltage	HD low	0	5.5	0	5.5	V
I _{OH}	High-level output current	B port, HD high		–14		–14	mA
		A port		–4		–4	
I _{OL}	Low-level output current	B port		14		14	mA
		A port		4		4	
T _A	Operating free-air temperature		–55	125	0	70	°C

electrical characteristics over recommended ranges of operating free-air temperature and supply voltage (unless otherwise noted)

PARAMETER		TEST CONDITIONS	V _{CC} [†]	SN54ACT1284			SN74ACT1284			UNIT
				MIN	TYP	MAX	MIN	TYP	MAX	
V _{hys}	Input hysteresis	V _{IT+} – V _{IT–} for all inputs	5 V	0.4			0.4			V
			4.7 V	0.2			0.2			
V _{OH}	B port	I _{OH} = –14 mA	4.7 V	2.4			2.4			V
	A port	I _{OH} = –50 μA	MIN to MAX	V _{CC} –0.2		V _{CC} –0.2				
		I _{OH} = –4 mA	4.7	3.7			3.7			
V _{OL}	B port	I _{OL} = 14 mA	4.7 V			0.4			0.4	V
	A port	I _{OL} = 50 μA				0.2			0.2	
		I _{OL} = 4 mA				0.4			0.4	
I _I		V _I = V _{CC} or GND	5.5 V			±1			±1	μA
I _{OZ}	A or B ports [‡]	V _O = V _{CC} or GND	5.5 V			±20			±20	μA
I _{OFF}	B port	V _I or V _O ≤ 7 V	0 V			±100			±100	μA
I _{CC}		V _I = V _{CC} or GND, I _O = 0	5.5 V			1.5			1.5	mA
C _i	Control inputs	V _I = V _{CC} or GND	5 V		4			4		pF
C _{io}	A or B ports	V _O = V _{CC} or GND	5 V		12			12		pF
Z _O	B port	I _{OH} = –20 mA, I _{OH} = –50 mA	5 V	8		30	8		30	Ω

[†] For I/O ports, the parameter I_{OZ} includes the input leakage current I_I.

[‡] For conditions shown as MIN or MAX, use the appropriate values under recommended operating conditions.

switching characteristics over recommended ranges of supply voltage and operating free-air temperature (unless otherwise noted) (see Figure 1)

PARAMETER		FROM (INPUT)	TO (OUTPUT)	SN54ACT1284		SN74ACT1284		UNIT
				MIN	MAX	MIN	MAX	
t _{PLH}	Totem pole	A or B	B or A	1	20	1	20	ns
t _{PHL}				1	20	1	20	
SR	Totem pole	B output		0.05	0.4	0.05	0.4	V/ns
t _{pd} (EN)	Totem pole	HD	B	1	20	1	20	ns
t _{pd} (DIS)				1	20	1	20	
t _r , t _f	Open drain	A	B	120		120		ns

PRODUCT PREVIEW information concerns products in the formative or design phase of development. Characteristic data and other specifications are design goals. Texas Instruments reserves the right to change or discontinue these products without notice.



POST OFFICE BOX 655303 • DALLAS, TEXAS 75265

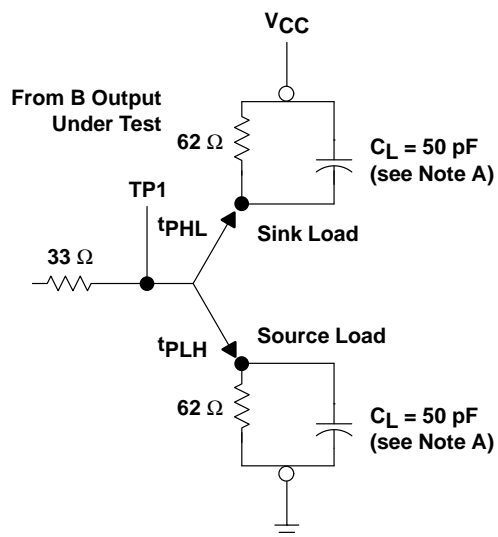
SN54ACT1284, SN74ACT1284

7-BIT BUS INTERFACES

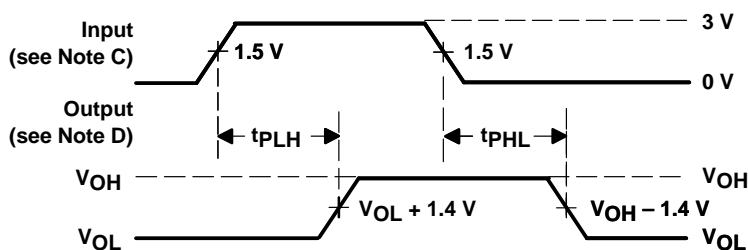
WITH 3-STATE OUTPUTS

SCAS459B – NOVEMBER 1994 – REVISED APRIL 1996

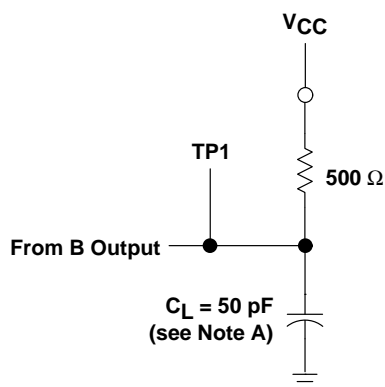
PARAMETER MEASUREMENT INFORMATION



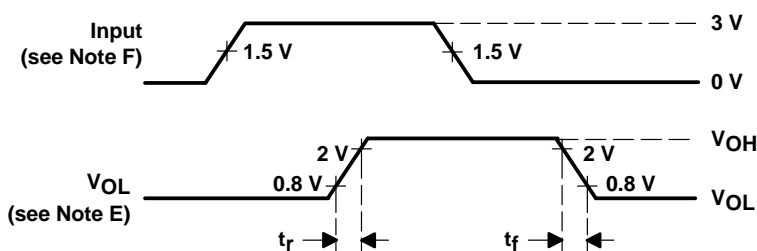
A-TO-B LOAD (totem pole)



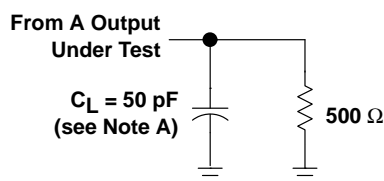
VOLTAGE WAVEFORMS MEASURED AT TP1
PROPAGATION DELAY TIMES (A to B)



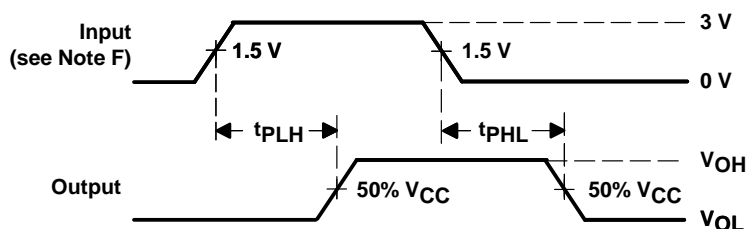
A-TO-B LOAD (open drain)



VOLTAGE WAVEFORMS MEASURED AT TP1 (B SIDE)



B-TO-A LOAD (totem pole)



VOLTAGE WAVEFORMS
PROPAGATION DELAY TIMES (B to A)

- NOTES:
- A. CL includes probe and jig capacitance.
 - B. The outputs are measured one at a time with one transition per measurement.
 - C. Input rise and fall times are 3 ns, 150 ns < pulsewidth < 10 μs for both low-to-high and high-to-low transitions.
 - D. Slew rate is defined as 10% and 90% of the transition times.
 - E. Rise and fall times, open drain, are < 120 ns.
 - F. Input rise and fall times are 3 ns.

Figure 1. Load Circuits and Voltage Waveforms

IMPORTANT NOTICE

Texas Instruments (TI) reserves the right to make changes to its products or to discontinue any semiconductor product or service without notice, and advises its customers to obtain the latest version of relevant information to verify, before placing orders, that the information being relied on is current.

TI warrants performance of its semiconductor products and related software to the specifications applicable at the time of sale in accordance with TI's standard warranty. Testing and other quality control techniques are utilized to the extent TI deems necessary to support this warranty. Specific testing of all parameters of each device is not necessarily performed, except those mandated by government requirements.

Certain applications using semiconductor products may involve potential risks of death, personal injury, or severe property or environmental damage ("Critical Applications").

TI SEMICONDUCTOR PRODUCTS ARE NOT DESIGNED, INTENDED, AUTHORIZED, OR WARRANTED TO BE SUITABLE FOR USE IN LIFE-SUPPORT APPLICATIONS, DEVICES OR SYSTEMS OR OTHER CRITICAL APPLICATIONS.

Inclusion of TI products in such applications is understood to be fully at the risk of the customer. Use of TI products in such applications requires the written approval of an appropriate TI officer. Questions concerning potential risk applications should be directed to TI through a local SC sales office.

In order to minimize risks associated with the customer's applications, adequate design and operating safeguards should be provided by the customer to minimize inherent or procedural hazards.

TI assumes no liability for applications assistance, customer product design, software performance, or infringement of patents or services described herein. Nor does TI warrant or represent that any license, either express or implied, is granted under any patent right, copyright, mask work right, or other intellectual property right of TI covering or relating to any combination, machine, or process in which such semiconductor products or services might be or are used.