

SN54HC590A, SN74HC590A 8-BIT BINARY COUNTERS WITH 3-STATE OUTPUT REGISTERS

SCLS039B – DECEMBER 1982 – REVISED JANUARY 1996

- 8-Bit Counter With Register
- High-Current 3-State Parallel Register Outputs Can Drive up to 15 LSTTL Loads
- Counter Has Direct Clear
- Package Options Include Plastic Small-Outline (D, DW), and Ceramic Flat (W) Packages, Ceramic Chip Carriers (FK), and Standard Plastic (N) and Ceramic (J) 300-mil DIPs

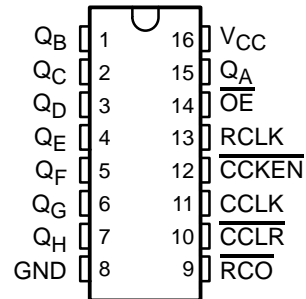
description

The 'HC590A contain an 8-bit binary counter that feeds an 8-bit storage register. The storage register has parallel outputs. Separate clocks are provided for both the binary counter and storage register. The binary counter features direct clear ($\overline{\text{CCLR}}$) and count-enable ($\overline{\text{CCKEN}}$) inputs. A ripple-carry ($\overline{\text{RCO}}$) output is provided for cascading. Expansion is easily accomplished for two stages by connecting $\overline{\text{RCO}}$ of the first stage to $\overline{\text{CCKEN}}$ of the second stage. Cascading for larger count chains can be accomplished by connecting $\overline{\text{RCO}}$ of each stage to the counter clock (CCLK) input of the following stage.

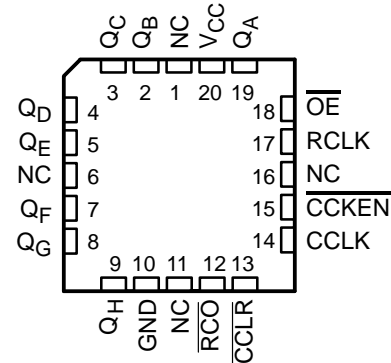
Both CCLK and the register clock (RCLK) input are positive-edge triggered. If both clocks are connected together, the counter state is always one count ahead of the register. Internal circuitry prevents clocking from the clock enable.

The SN54HC590A is characterized for operation over the full military temperature range of -55°C to 125°C . The SN74HC590A is characterized for operation from -40°C to 85°C .

SN54HC590A . . . J OR W PACKAGE
SN74HC590A . . . D, DW, OR N PACKAGE
(TOP VIEW)



SN54HC590A . . . FK PACKAGE
(TOP VIEW)



NC – No internal connection



Please be aware that an important notice concerning availability, standard warranty, and use in critical applications of Texas Instruments semiconductor products and disclaimers thereto appears at the end of this data sheet.

PRODUCTION DATA information is current as of publication date. Products conform to specifications per the terms of Texas Instruments standard warranty. Production processing does not necessarily include testing of all parameters.

**TEXAS
INSTRUMENTS**

POST OFFICE BOX 655303 • DALLAS, TEXAS 75265

Copyright © 1996, Texas Instruments Incorporated

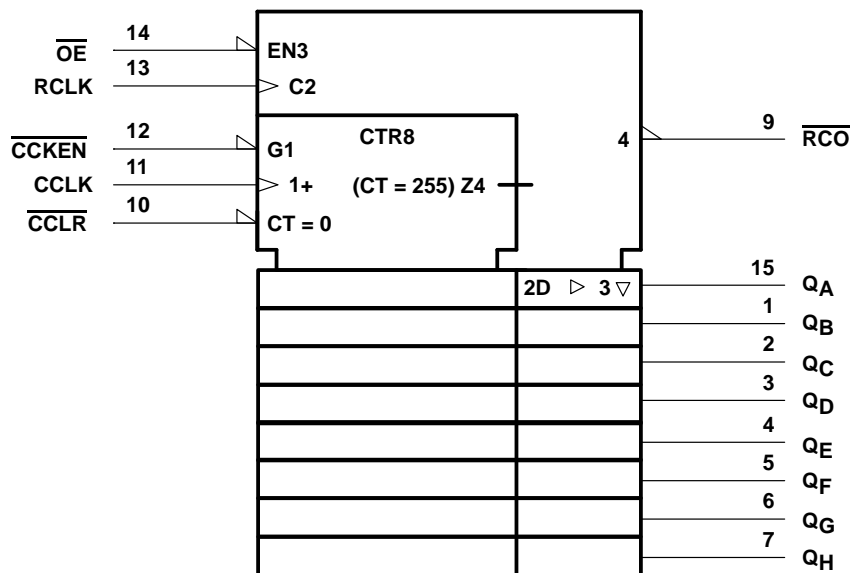
SN54HC590A, SN74HC590A

8-BIT BINARY COUNTERS

WITH 3-STATE OUTPUT REGISTERS

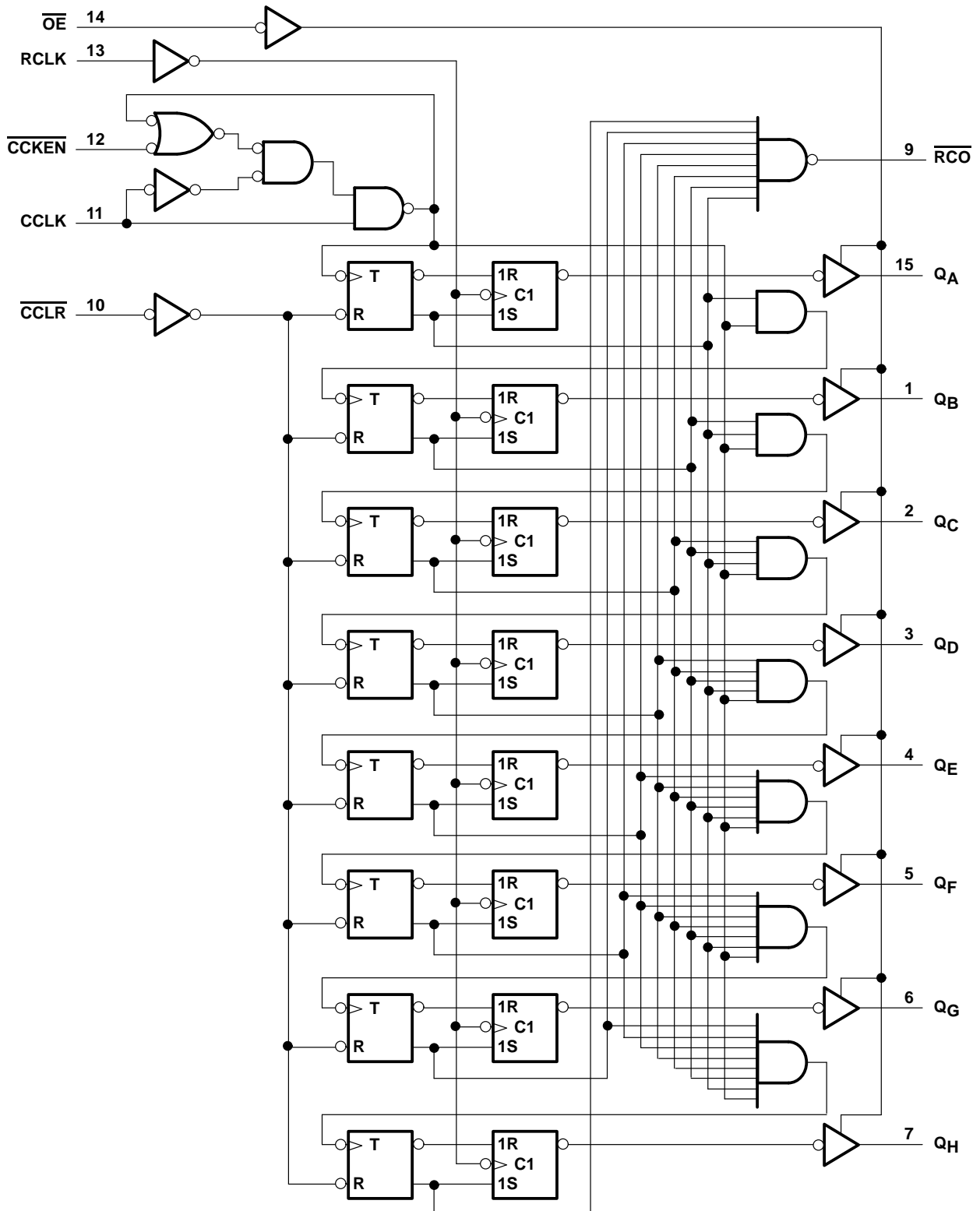
SCLS039B – DECEMBER 1982 – REVISED JANUARY 1996

logic symbol†



† This symbol is in accordance with ANSI/IEEE Std 91-1984 and IEC Publication 617-12. Pin numbers shown are for the D, DW, J, N, and W packages.

logic diagram (positive logic)



Pin numbers shown are for the D, DW, J, N, and W packages.

SN54HC590A, SN74HC590A

8-BIT BINARY COUNTERS

WITH 3-STATE OUTPUT REGISTERS

SCLS039B – DECEMBER 1982 – REVISED JANUARY 1996

absolute maximum ratings over operating free-air temperature range†

Supply voltage range, V_{CC}	–0.5 V to 7 V
Input clamp current, I_{IK} ($V_I < 0$ or $V_I > V_{CC}$) (see Note 1)	±20 mA
Output clamp current, I_{OK} ($V_O < 0$ or $V_O > V_{CC}$) (see Note 1)	±20 mA
Continuous output current, I_O ($V_O = 0$ to V_{CC})	±35 mA
Continuous current through V_{CC} or GND	±70 mA
Maximum power dissipation at $T_A = 55^\circ\text{C}$ (in still air) (see Note 2):	
D package	1.3 W
DW package	1 W
N package	1.1 W
Storage temperature range, T_{stg}	–65°C to 150°C

† Stresses beyond those listed under “absolute maximum ratings” may cause permanent damage to the device. These are stress ratings only, and functional operation of the device at these or any other conditions beyond those indicated under “recommended operating conditions” is not implied. Exposure to absolute-maximum-rated conditions for extended periods may affect device reliability.

NOTES: 1. The input and output voltage ratings may be exceeded if the input and output current ratings are observed.
2. The maximum package power dissipation is calculated using a junction temperature of 150°C and a board trace length of 750 mils, except for the N package, which has a trace length of zero.

recommended operating conditions

			SN54HC590A			SN74HC590A			UNIT
			MIN	NOM	MAX	MIN	NOM	MAX	
V_{CC}	Supply voltage		2	5	6	2	5	6	V
V_{IH}	High-level input voltage	$V_{CC} = 2\text{ V}$	1.5			1.5			V
		$V_{CC} = 4.5\text{ V}$	3.15			3.15			
		$V_{CC} = 6\text{ V}$	4.2			4.2			
V_{IL}	Low-level input voltage	$V_{CC} = 2\text{ V}$	0	0.5		0	0.5		V
		$V_{CC} = 4.5\text{ V}$	0	1.35		0	1.35		
		$V_{CC} = 6\text{ V}$	0	1.8		0	1.8		
V_I	Input voltage		0	V_{CC}		0	V_{CC}		V
V_O	Output voltage		0	V_{CC}		0	V_{CC}		V
t_t^\ddagger	Input transition (rise and fall) time	$V_{CC} = 2\text{ V}$	0	1000		0	1000		ns
		$V_{CC} = 4.5\text{ V}$	0	500		0	500		
		$V_{CC} = 6\text{ V}$	0	400		0	400		
T_A	Operating free-air temperature		–55	125		–40	85		°C

† If this device is used in the threshold region (from $V_{IL\text{max}} = 0.5\text{ V}$ to $V_{IH\text{min}} = 1.5\text{ V}$), there is a potential to go into the wrong state from induced grounding, causing double clocking. Operating with the inputs at $t_t = 1000\text{ ns}$ and $V_{CC} = 2\text{ V}$ will not damage the device; however, functionally, the CLK inputs are not ensured while in the shift, count, or toggle operating modes.

SN54HC590A, SN74HC590A
8-BIT BINARY COUNTERS
WITH 3-STATE OUTPUT REGISTERS
 SCLS039B – DECEMBER 1982 – REVISED JANUARY 1996

electrical characteristics over recommended operating free-air temperature range (unless otherwise noted)

PARAMETER	TEST CONDITIONS		V _{CC}	T _A = 25°C			SN54HC590A		SN74HC590A		UNIT
				MIN	TYP	MAX	MIN	MAX	MIN	MAX	
V _{OH}	V _I = V _{IH} or V _{IL}	I _{OH} = -20 µA	2 V	1.9	1.998		1.9		1.9		V
			4.5 V	4.4	4.499		4.4		4.4		
			6 V	5.9	5.999		5.9		5.9		
		RCO, I _{OH} = -4 mA	4.5 V	3.98	4.3		3.7		3.84		
		Q _A -Q _H , I _{OH} = -6 mA		3.98	4.3		3.7		3.84		
		RCO, I _{OH} = -5.2 mA	6 V	5.48	5.8		5.2		5.34		
		Q _A -Q _H , I _{OH} = -7.8 mA		5.48	5.8		5.2		5.34		
V _{OL}	V _I = V _{IH} or V _{IL}	I _{OL} = 20 µA	2 V		0.002	0.1		0.1		0.1	V
			4.5 V		0.001	0.1		0.1		0.1	
			6 V		0.001	0.1		0.1		0.1	
		RCO, I _{OL} = 4 mA	4.5 V		0.17	0.26		0.4		0.33	
		Q _A -Q _H , I _{OL} = 6 mA			0.17	0.26		0.4		0.33	
		RCO, I _{OL} = 5.2 mA	6 V		0.15	0.26		0.4		0.33	
		Q _A -Q _H , I _{OL} = 7.8 mA			0.15	0.26		0.4		0.33	
I _I	V _I = V _{CC} or 0		6 V		±0.1	±100		±1000		±1000	nA
I _{OZ}	V _O = V _{CC} or 0		6 V		±0.01	±0.5		±10		±5	µA
I _{CC}	V _I = V _{CC} or 0, I _O = 0		6 V			8		160		80	µA
C _i			2 V to 6 V		3	10		10		10	pF

SN54HC590A, SN74HC590A

8-BIT BINARY COUNTERS

WITH 3-STATE OUTPUT REGISTERS

SCLS039B – DECEMBER 1982 – REVISED JANUARY 1996

timing requirements over recommended operating free-air temperature range (unless otherwise noted)

		V _{CC}	T _A = 25°C		SN54HC590A		SN74HC590A		UNIT
			MIN	MAX	MIN	MAX	MIN	MAX	
f _{clock}	Clock frequency	2 V	0	4	0	2.5	0	3.2	MHz
		4.5 V	0	20	0	13		16	
		6 V	0	24	0	16	0	19	
t _w	Pulse duration	2 V	125		200		155		ns
		4.5 V	25		38		31		
		6 V	21		32		26		
	$\overline{\text{CCLR}}$ low	2 V	100		150		125		
		4.5 V	20		30		25		
		6 V	17		26		21		
t _{su}	$\overline{\text{CCKEN}}$ low before CCLK↑	2 V	100		150		125		ns
		4.5 V	20		30		25		
		6 V	17		26		21		
	$\overline{\text{CCLR}}$ high (inactive) before CCLK↑	2 V	100		150		125		
		4.5 V	20		30		25		
		6 V	17		26		21		
	CCLK↑ before RCLK↑†	2 V	100		150		125		
		4.5 V	20		30		25		
		6 V	17		26		21		
t _h	$\overline{\text{CCKEN}}$ low after CCLK↑	2 V	50		75		60		ns
		4.5 V	10		15		12		
		6 V	9		13		11		

† This setup time ensures that the register gets stable data from the counter outputs. The clocks may be tied together, in which case the register is one clock pulse behind the counter.

SN54HC590A, SN74HC590A
8-BIT BINARY COUNTERS
WITH 3-STATE OUTPUT REGISTERS
 SCLS039B – DECEMBER 1982 – REVISED JANUARY 1996

switching characteristics over recommended operating free-air temperature range, $C_L = 50 \text{ pF}$
 (unless otherwise noted) (see Figure 1)

PARAMETER	FROM (INPUT)	TO (OUTPUT)	V _{CC}	SN54HC590A				UNIT	
				T _A = 25°C			MIN		MAX
				MIN	TYP	MAX			
f _{max}			2 V	4	8		2.5	MHz	
			4.5 V	20	35		13		
			6 V	24	40		16		
t _{pd}	CCLK↑	$\overline{\text{RCO}}$	2 V		80	150	225	ns	
			4.5 V		20	31	45		
			6 V		15	26	38		
t _{PLH}	$\overline{\text{CCLR}}\downarrow$	$\overline{\text{RCO}}$	2 V		70	130	195	ns	
			4.5 V		18	28	39		
			6 V		14	23	33		
t _{pd}	RCLK↑	Q	2 V		70	140	210	ns	
			4.5 V		18	31	42		
			6 V		14	25	36		
t _{en}	$\overline{\text{OE}}\downarrow$	Q	2 V		80	125	185	ns	
			4.5 V		20	30	37		
			6 V		15	28	31		
t _{dis}	$\overline{\text{OE}}\uparrow$	Q	2 V		80	125	185	ns	
			4.5 V		20	30	37		
			6 V		15	28	31		
t _t [*]		$\overline{\text{RCO}}$	2 V		38	75	110	ns	
			4.5 V		8	15	22		
			6 V		6	13	19		
		Q	2 V		38	60	90		
			4.5 V		8	12	18		
			6 V		6	10	15		

* This parameter is not production tested for the SN54HC590A.

SN54HC590A, SN74HC590A
8-BIT BINARY COUNTERS
WITH 3-STATE OUTPUT REGISTERS

SCLS039B – DECEMBER 1982 – REVISED JANUARY 1996

switching characteristics over recommended operating free-air temperature range, $C_L = 50$ pF
(unless otherwise noted) (see Figure 1)

PARAMETER	FROM (INPUT)	TO (OUTPUT)	V _{CC}	SN74HC590A				UNIT	
				T _A = 25°C			MIN		MAX
				MIN	TYP	MAX			
f _{max}			2 V	4	8		3.2	MHz	
			4.5 V	20	35		16		
			6 V	24	40		19		
t _{pd}	CCLK↑	\overline{RCO}	2 V		80	150		190	ns
			4.5 V		20	30		38	
			6 V		15	26		33	
t _{PLH}	$\overline{CCLR}\downarrow$	\overline{RCO}	2 V		70	130		165	ns
			4.5 V		18	26		33	
			6 V		14	22		28	
t _{pd}	RCLK↑	Q	2 V		70	140		175	ns
			4.5 V		18	28		35	
			6 V		14	24		30	
t _{en}	$\overline{OE}\downarrow$	Q	2 V		80	125		155	ns
			4.5 V		20	25		31	
			6 V		15	21		26	
t _{dis}	$\overline{OE}\uparrow$	Q	2 V		80	125		155	ns
			4.5 V		20	25		31	
			6 V		15	21		26	
t _t		\overline{RCO}	2 V		38	75		95	ns
			4.5 V		8	15		19	
			6 V		6	13		16	
		Q	2 V		38	60		75	
			4.5 V		8	12		15	
			6 V		6	10		13	

SN54HC590A, SN74HC590A
8-BIT BINARY COUNTERS
WITH 3-STATE OUTPUT REGISTERS
 SCLS039B – DECEMBER 1982 – REVISED JANUARY 1996

switching characteristics over recommended operating free-air temperature range, $C_L = 150 \text{ pF}$ (unless otherwise noted) (see Figure 1)

PARAMETER	FROM (INPUT)	TO (OUTPUT)	V _{CC}	SN54HC590A			UNIT		
				T _A = 25°C				MIN	MAX
				MIN	TYP	MAX			
t _{pd}	RCLK↑	Q	2 V	100	300	447	ns		
			4.5 V	24	60	90			
			6 V	20	51	77			
t _{en}	\overline{OE}	Q	2 V	90	200	300	ns		
			4.5 V	23	40	60			
			6 V	19	34	51			
t _t [*]		Q	2 V	45	210	315	ns		
			4.5 V	17	42	63			
			6 V	13	36	53			

* This parameter is not production tested for the SN54HC590A.

switching characteristics over recommended operating free-air temperature range, $C_L = 150 \text{ pF}$ (unless otherwise noted) (see Figure 1)

PARAMETER	FROM (INPUT)	TO (OUTPUT)	V _{CC}	SN74HC590A				UNIT	
				T _A = 25°C			MIN		MAX
				MIN	TYP	MAX			
t _{pd}	RCLK↑	Q	2 V	100	300	380	ns		
			4.5 V	24	60	76			
			6 V	20	51	65			
t _{en}	\overline{OE}	Q	2 V	90	200	250	ns		
			4.5 V	23	40	50			
			6 V	19	34	43			
t _t		Q	2 V	45	210	265	ns		
			4.5 V	17	42	53			
			6 V	13	36	45			

operating characteristics, $T_A = 25^\circ\text{C}$

PARAMETER		TEST CONDITIONS	TYP	UNIT
C_{pd}	Power dissipation capacitance	No load	250	pF

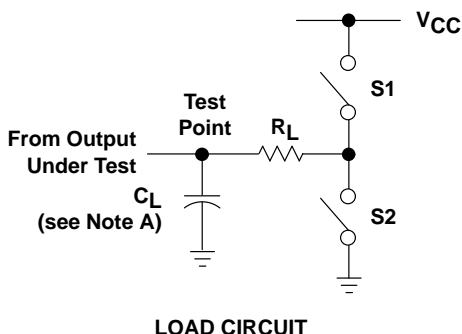
SN54HC590A, SN74HC590A

8-BIT BINARY COUNTERS

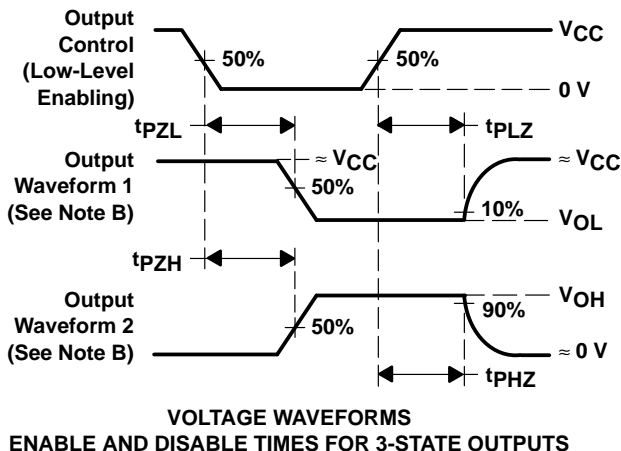
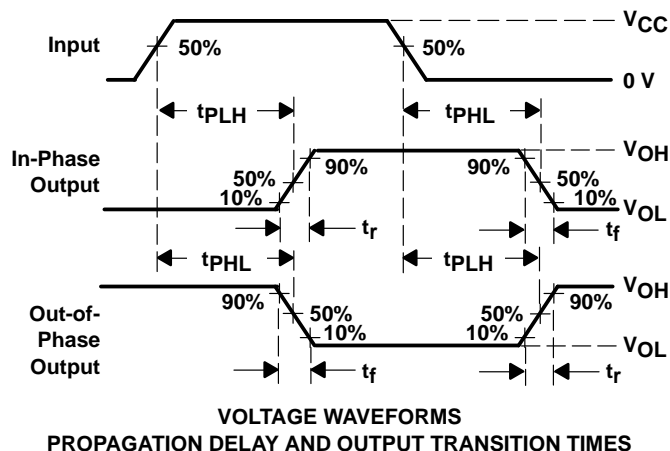
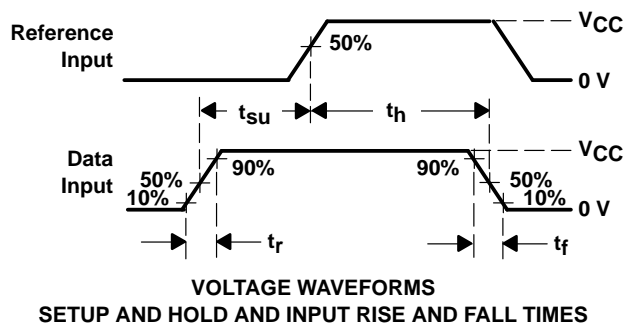
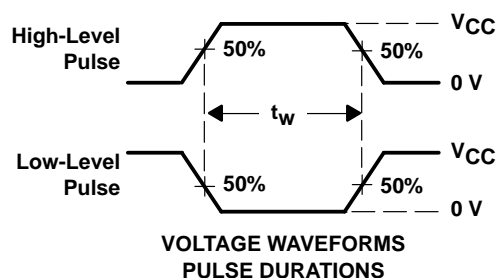
WITH 3-STATE OUTPUT REGISTERS

SCLS039B – DECEMBER 1982 – REVISED JANUARY 1996

PARAMETER MEASUREMENT INFORMATION



PARAMETER	R_L	C_L	S1	S2
t_{en}	1 k Ω	50 pF or 150 pF	Open	Closed
			Closed	Open
t_{dis}	1 k Ω	50 pF	Open	Closed
			Closed	Open
t_{pd} or t_t	—	50 pF or 150 pF	Open	Open



- NOTES:
- C_L includes probe and test-fixture capacitance.
 - Waveform 1 is for an output with internal conditions such that the output is low except when disabled by the output control. Waveform 2 is for an output with internal conditions such that the output is high except when disabled by the output control.
 - Phase relationships between waveforms were chosen arbitrarily. All input pulses are supplied by generators having the following characteristics: $PRR \leq 1$ MHz, $Z_O = 50 \Omega$, $t_r = 6$ ns, $t_f = 6$ ns.
 - For clock inputs, f_{max} is measured when the input duty cycle is 50%.
 - The outputs are measured one at a time with one input transition per measurement.
 - t_{PLZ} and t_{PHZ} are the same as t_{dis} .
 - t_{PZL} and t_{PZH} are the same as t_{en} .
 - t_{PLH} and t_{PHL} are the same as t_{pd} .

Figure 1. Load Circuit and Voltage Waveforms

IMPORTANT NOTICE

Texas Instruments (TI) reserves the right to make changes to its products or to discontinue any semiconductor product or service without notice, and advises its customers to obtain the latest version of relevant information to verify, before placing orders, that the information being relied on is current.

TI warrants performance of its semiconductor products and related software to the specifications applicable at the time of sale in accordance with TI's standard warranty. Testing and other quality control techniques are utilized to the extent TI deems necessary to support this warranty. Specific testing of all parameters of each device is not necessarily performed, except those mandated by government requirements.

Certain applications using semiconductor products may involve potential risks of death, personal injury, or severe property or environmental damage ("Critical Applications").

TI SEMICONDUCTOR PRODUCTS ARE NOT DESIGNED, INTENDED, AUTHORIZED, OR WARRANTED TO BE SUITABLE FOR USE IN LIFE-SUPPORT APPLICATIONS, DEVICES OR SYSTEMS OR OTHER CRITICAL APPLICATIONS.

Inclusion of TI products in such applications is understood to be fully at the risk of the customer. Use of TI products in such applications requires the written approval of an appropriate TI officer. Questions concerning potential risk applications should be directed to TI through a local SC sales office.

In order to minimize risks associated with the customer's applications, adequate design and operating safeguards should be provided by the customer to minimize inherent or procedural hazards.

TI assumes no liability for applications assistance, customer product design, software performance, or infringement of patents or services described herein. Nor does TI warrant or represent that any license, either express or implied, is granted under any patent right, copyright, mask work right, or other intellectual property right of TI covering or relating to any combination, machine, or process in which such semiconductor products or services might be or are used.