

SN5491A, SN54LS91, SN7491A, SN74LS91 8-BIT SHIFT REGISTERS

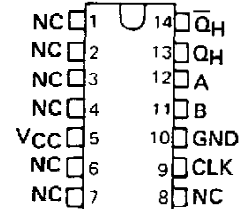
SDLS126

MARCH 1974 — REVISED MARCH 1988

- For applications in:
Digital Computer Systems
Data-Handling Systems
Control Systems

SN5491A, SN54LS91 . . . J PACKAGE
SN7491A . . . N PACKAGE
SN74LS91 . . . D OR N PACKAGE

(TOP VIEW)



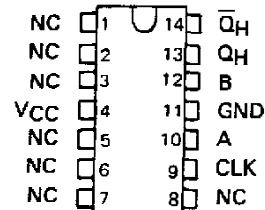
| TYPE | TYPICAL MAXIMUM CLOCK FREQUENCY | TYPICAL POWER DISSIPATION |
|-------|--|---------------------------------|
| '91A | 18 MHz | 175 mW |
| 'LS91 | 18 MHz | 60 mW |

description

These monolithic serial-in, serial-out, 8-bit shift registers utilize transistor-transistor logic (TTL) circuits and are composed of eight R-S master-slave flip-flops, input gating, and a clock driver. Single-rail data and input control are gated through inputs A and B and an internal inverter to form the complementary inputs to the first bit of the shift register. Drive for the internal common clock line is provided by an inverting clock driver. This clock pulse inverter/driver causes these circuits to shift information one bit on the positive edge of an input clock pulse.

SN5491A, SN54LS91 . . . W PACKAGE

(TOP VIEW)



NC - No internal connection

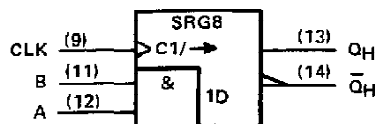
FUNCTION TABLE

| INPUTS AT t_n | | OUTPUTS AT $t_n + 8$ | |
|--------------------|---|-------------------------|-------------|
| A | B | Q_H | \bar{Q}_H |
| H | H | H | L |
| L | X | L | H |
| X | L | L | H |

t_n = Reference bit time,
clock low

$t_n + 8$ = Bit time after 8
low-to-high
clock transitions.

logic symbol†



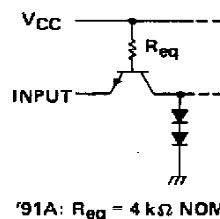
† This symbol is in accordance with ANSI/IEEE Std 91-1984 and IEC Publication 617-12.

schematics of inputs and outputs

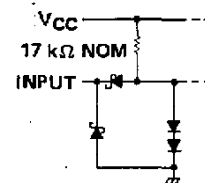
'91A

'LS91

EQUIVALENT OF EACH INPUT



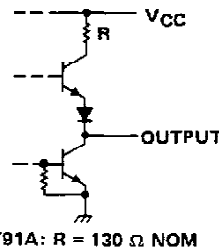
EQUIVALENT OF EACH INPUT



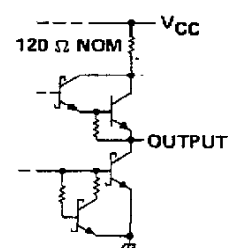
'91A

'LS91

TYPICAL OF BOTH OUTPUTS



TYPICAL OF BOTH OUTPUTS



PRODUCTION DATA documents contain information current as of publication date. Products conform to specifications per the terms of Texas Instruments standard warranty. Production processing does not necessarily include testing of all parameters.

TEXAS
INSTRUMENTS

POST OFFICE BOX 655012 • DALLAS, TEXAS 75265

SN54LS91, SN74LS91 8-BIT SHIFT REGISTERS

absolute maximum ratings over operating free-air temperature range (unless otherwise noted)

| | |
|--|----------------|
| Supply voltage, V_{CC} (see Note 1) | 7 V |
| Input voltage | 7 V |
| Operating free-air temperature range: SN54LS91 | -55°C to 125°C |
| SN74LS91 | 0°C to 70°C |
| Storage temperature range | -65°C to 150°C |

NOTES: 1. Voltage values are with respect to network ground terminal.

recommended operating conditions

| | SN54LS91 | | | SN74LS91 | | | UNIT |
|---------------------------------------|----------|-----|------|----------|-----|------|---------|
| | MIN | NOM | MAX | MIN | NOM | MAX | |
| Supply voltage, V_{CC} | 4.5 | 5 | 5.5 | 4.75 | 5 | 5.25 | V |
| High-level output current, I_{OH} | | | -400 | | | -400 | μ A |
| Low-level output current, I_{OL} | | | 4 | | | 8 | mA |
| Width of clock input pulse, t_W | 25 | | | 25 | | | ns |
| Setup time, t_{SU} (see Figure 1) | 25 | | | 25 | | | ns |
| Hold time, t_H (see Figure 1) | 0 | | | 0 | | | ns |
| Operating free-air temperature, T_A | -55 | | 125 | 0 | | 70 | °C |

electrical characteristics over recommended operating free-air temperature range (unless otherwise noted)

| PARAMETER | TEST CONDITIONS† | SN54LS91 | | | SN74LS91 | | | UNIT |
|---|---|------------------------|------|------|----------|------|------|------|
| | | MIN | TYP‡ | MAX | MIN | TYP‡ | MAX | |
| V _{IH} High-level input voltage | | 2 | | | 2 | | | V |
| V _{IL} Low-level input voltage | | | | 0.7 | | | 0.8 | V |
| V _{IK} Input clamp voltage | V _{CC} = MIN, I _I = -18 mA | | | -1.5 | | | -1.5 | V |
| V _{OH} High-level output voltage | V _{CC} = MIN, V _{IH} = 2 V, V _{IL} = V _{IL} max, I _{OH} = -400 μA | 2.5 | 3.5 | | 2.7 | 3.5 | | V |
| V _{OL} Low-level output voltage | V _{CC} = MIN, V _{IH} = 2 V, V _{IL} = V _{IL} max | I _{OL} = 4 mA | | 0.25 | 0.4 | 0.25 | 0.4 | V |
| | | I _{OL} = 8 mA | | | | 0.35 | 0.5 | |
| I _I Input current at maximum input voltage | V _{CC} = MAX, V _I = 7 V | | | 0.1 | | 0.1 | | mA |
| I _{IH} High-level input current | V _{CC} = MAX, V _I = 2.7 V | | | 20 | | 20 | | μA |
| I _{IL} Low-level input current | V _{CC} = MAX, V _I = 0.4 V | | | -0.4 | | -0.4 | | mA |
| I _{OS} Short-circuit output current § | V _{CC} = MAX | -20 | | -100 | -20 | | -100 | mA |
| I _{CC} Supply current | V _{CC} = MAX, See Note 3 | 12 | | 20 | 12 | | 20 | mA |

† For conditions shown as MIN or MAX, use the appropriate value specified under recommended operating conditions.

‡ All typical values are at $V_{CC} = 5 \text{ V}, T_A = 25^\circ\text{C}$.

§ Not more than one output should be shorted at a time, and duration of the short-circuit should not exceed one second.

NOTE 3: I_{CC} is measured after the eighth clock pulse with the output open and A and B inputs grounded.

switching characteristics, $V_{CC} = 5 \text{ V}, T_A = 25^\circ\text{C}$

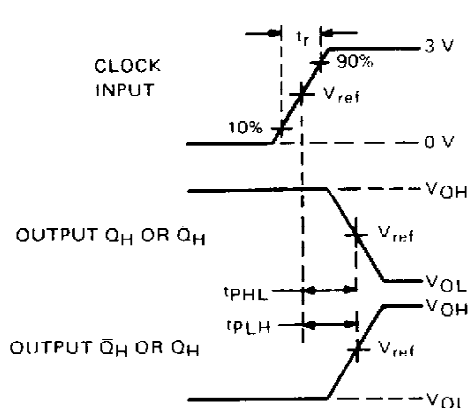
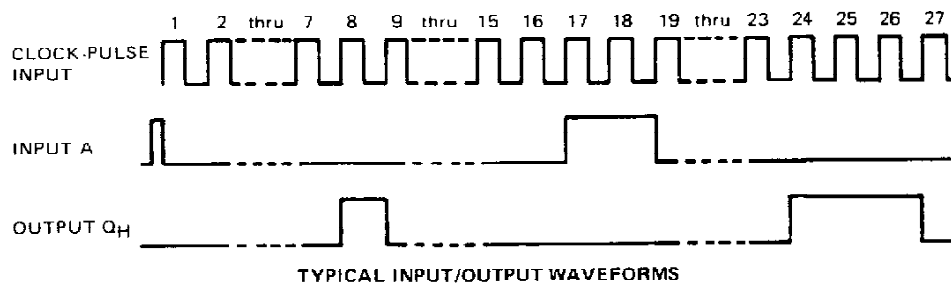
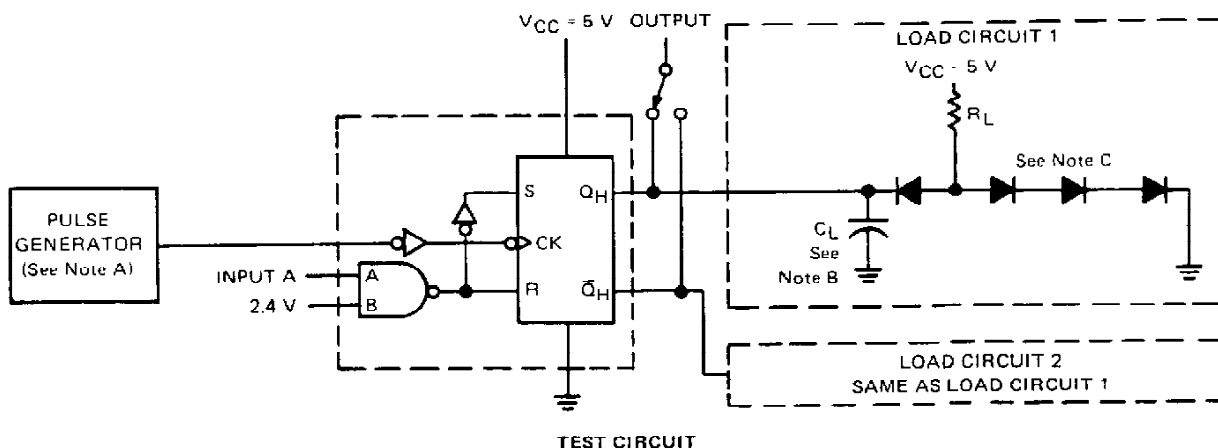
| PARAMETER | TEST CONDITIONS | MIN | TYP | MAX | UNIT |
|--|----------------------------|-----|-----|-----|------|
| f_{max} Maximum clock frequency | $C_L = 15 \text{ pF},$ | 10 | 18 | | MHz |
| t_{PLH} Propagation delay time, low-to-high-level output | $R_L = 2 \text{ k}\Omega,$ | | 24 | 40 | ns |
| t_{PHL} Propagation delay time, high-to-low-level output | See Figure 1 | | 27 | 40 | ns |

TEXAS
INSTRUMENTS

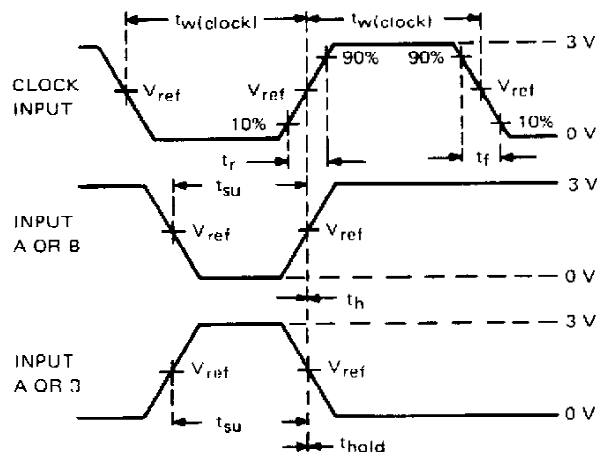
POST OFFICE BOX 655012 • DALLAS, TEXAS 75265

SN5491A, SN54LS91, SN7491A, SN74LS91 **8-BIT SHIFT REGISTERS**

PARAMETER MEASUREMENT INFORMATION



PROPAGATION DELAY TIMES VOLTAGE WAVEFORMS



SWITCHING TIMES VOLTAGE WAVEFORMS

- NOTES: A. The generator has the following characteristics: $t_{w(\text{clock})} = 500 \text{ ns}$, $\text{PRR} \leq 1 \text{ MHz}$, $Z_{\text{out}} \approx 50 \Omega$. For SN5491A/SN7491A, $t_r \leq 10 \text{ ns}$ and $t_f \leq 10 \text{ ns}$; for SN54LS91, $t_r = 15 \text{ ns}$, and $t_f = 6 \text{ ns}$.
 B. C_L includes probe and jig capacitance.
 C. All diodes are 1N3064 or equivalent.
 D. For SN5491A/SN7491A, $V_{\text{ref}} = 1.5 \text{ V}$; for SN54LS91/SN74LS91, $V_{\text{ref}} = 1.3 \text{ V}$.

FIGURE 1—SWITCHING TIMES

IMPORTANT NOTICE

Texas Instruments (TI) reserves the right to make changes to its products or to discontinue any semiconductor product or service without notice, and advises its customers to obtain the latest version of relevant information to verify, before placing orders, that the information being relied on is current.

TI warrants performance of its semiconductor products and related software to the specifications applicable at the time of sale in accordance with TI's standard warranty. Testing and other quality control techniques are utilized to the extent TI deems necessary to support this warranty. Specific testing of all parameters of each device is not necessarily performed, except those mandated by government requirements.

Certain applications using semiconductor products may involve potential risks of death, personal injury, or severe property or environmental damage ("Critical Applications").

TI SEMICONDUCTOR PRODUCTS ARE NOT DESIGNED, INTENDED, AUTHORIZED, OR WARRANTED TO BE SUITABLE FOR USE IN LIFE-SUPPORT APPLICATIONS, DEVICES OR SYSTEMS OR OTHER CRITICAL APPLICATIONS.

Inclusion of TI products in such applications is understood to be fully at the risk of the customer. Use of TI products in such applications requires the written approval of an appropriate TI officer. Questions concerning potential risk applications should be directed to TI through a local SC sales office.

In order to minimize risks associated with the customer's applications, adequate design and operating safeguards should be provided by the customer to minimize inherent or procedural hazards.

TI assumes no liability for applications assistance, customer product design, software performance, or infringement of patents or services described herein. Nor does TI warrant or represent that any license, either express or implied, is granted under any patent right, copyright, mask work right, or other intellectual property right of TI covering or relating to any combination, machine, or process in which such semiconductor products or services might be or are used.