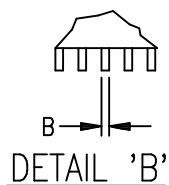
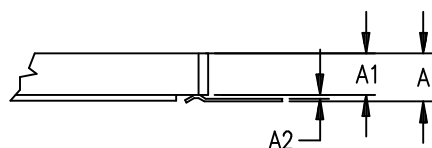
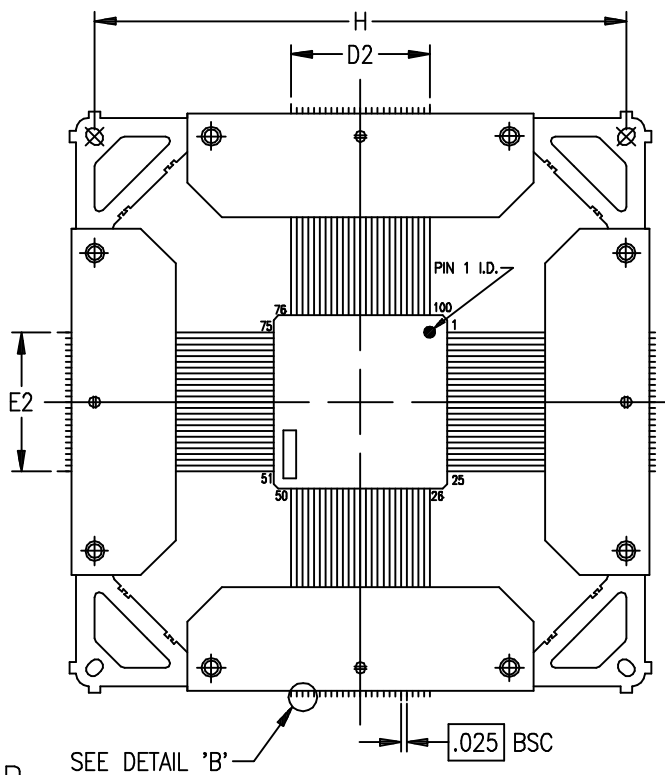
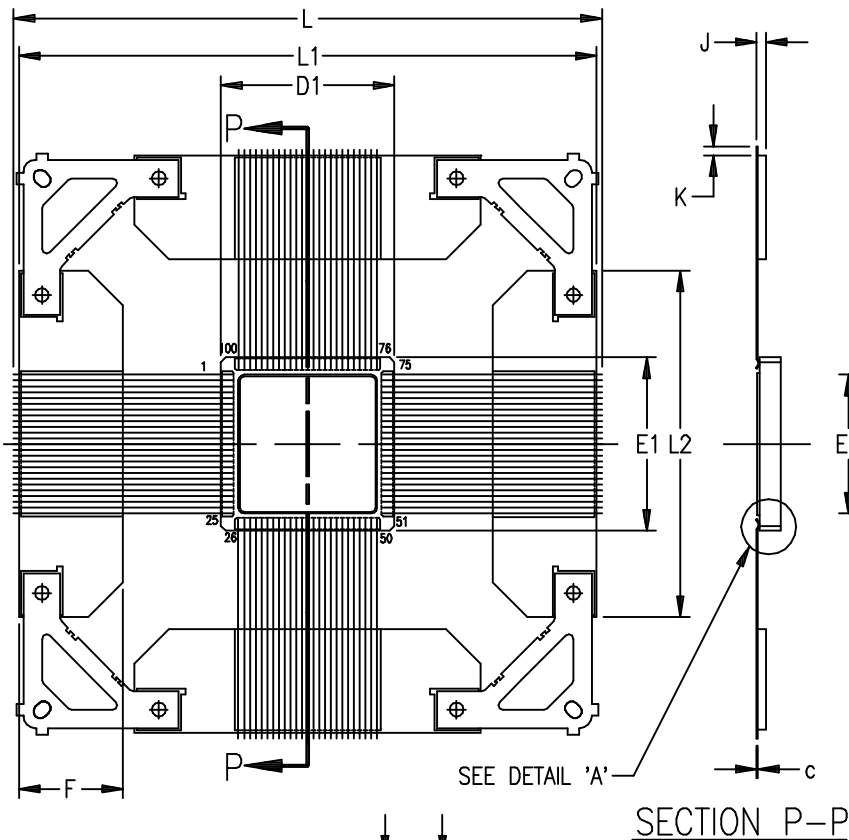


LID SIDE

NON LID SIDE



NOTES:

1. ALL DIMENSIONING AND TOLERANCING CONFORM TO ANSI Y14.5M-1982
2. SYMBOL "N" IS THE NUMBER OF TERMINALS.
3. PACKAGES ARE SHIPPED UNFORMED.
4. LEAD FINISH: GOLD (50 MICROINCHES MINIMUM) OVER NICKEL PER MIL-I-38535

SYMBOL	INCHES		
	MIN.	NOM.	MAX.
A	$\frac{1}{16}$	$\frac{1}{16}$.135
A1	$\frac{1}{16}$	$\frac{1}{16}$.115
A2	$\frac{1}{16}$	$\frac{1}{16}$.020
B	.006	.008	.012
C	.005	.006	.009
D1/E1	.740	.750	.765
D2/E2	.600 BSC		
F	.425	.450	.475
H	2.300 BSC		
J	.030	.035	.040
K	$\frac{1}{16}$	$\frac{1}{16}$.020
L	$\frac{1}{16}$	$\frac{1}{16}$	2.580
L1	2.490	2.500	2.510
L2	1.480	1.500	1.520
N	100		

100-PIN CERAMIC BRAZED CQFP (CB100)
(XC4000 VERSION)