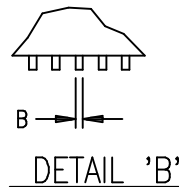
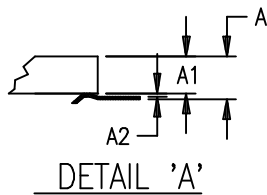
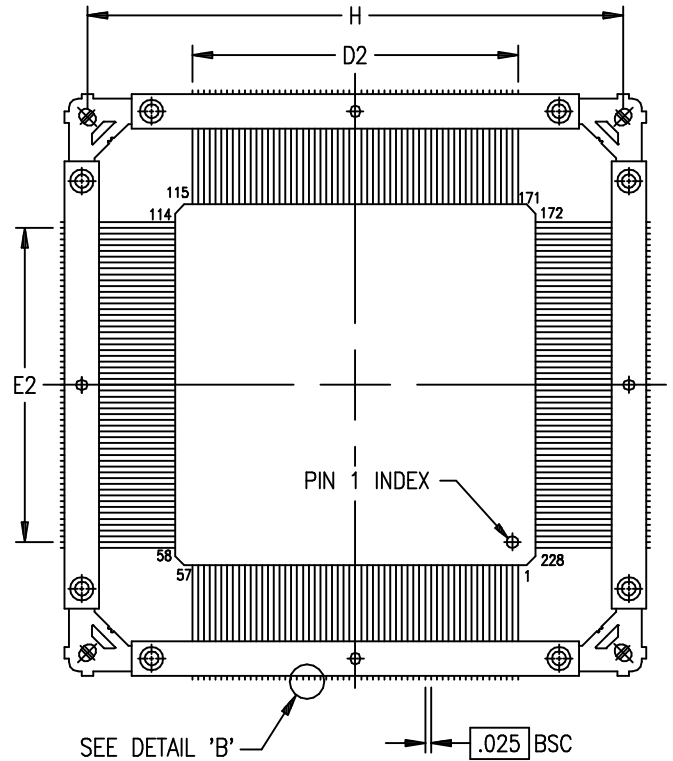
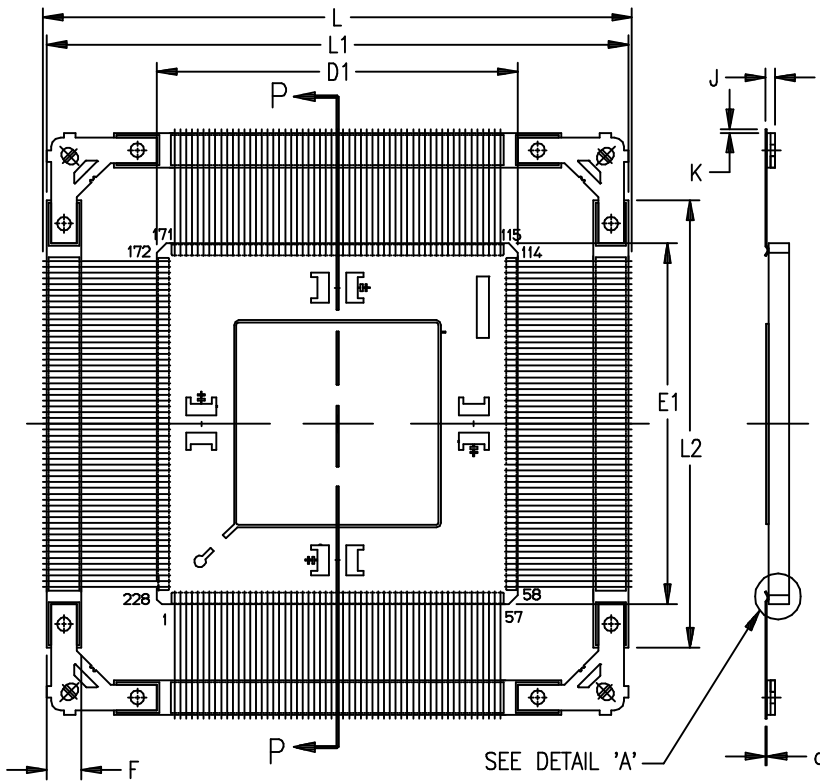


LID SIDE

NON LID SIDE



SECTION P-P

NOTES:

1. ALL DIMENSIONS AND TOLERANCES CONFORM TO ANSI Y14.5M-1982
2. SYMBOL "N" IS THE NUMBER OF TERMINALS.
3. PACKAGES ARE SHIPPED UNFORMED.
4. LEAD FINISH: GOLD (50 MICROINCHES MINIMUM) OVER NICKEL PER MIL-I-38535

SYMBOL	INCHES		
	MIN.	NOM.	MAX.
A	\times	\times	.130
A1	\times	\times	.110
A2	\times	\times	.020
B	.007	\times	.012
C	.005	.006	.009
D1/E1	1.534	1.550	1.570
D2/E2	1.400 BSC		
F	.125	.150	.175
H	2.300 BSC		
J	.030	.035	.040
K	\times	\times	.020
L	\times	\times	2.580
L1	2.480	2.500	2.530
L2	1.900	1.920	1.940
N	228		

228-PIN CERAMIC BRAZED CQFP (CB228)