



# PCMCIA Card Debugger/Exerciser

February 1997

Product Description 1.02

## Overview

Mobile Media Research's PCMCIA Card Debugger/Exerciser is designed for both hardware and software engineers in the development phase of a PCMCIA product.

Professional and Lite versions are available depending upon the needs and budget of the user. The features of each are listed below.

### Lite Version Features (SW-002-LV)

- Engineering debug software for PCMCIA hosts and cards
  - ◇ Supports 82365SL-compatible based hosts
- Fully compatible Microsoft Windows-based GUI
  - ◇ Provides easy control of host functions
  - ◇ Generates PCMCIA bus cycles on the selected socket
  - ◇ Allows direct access to PCIC registers
  - ◇ Integrates all functionality necessary for PCMCIA compatibility testing in one screen
- Supports basic and necessary PCMCIA debug and testing features:
  - ◇ Register access
  - ◇ I/O and memory window set-up
  - ◇ Socket configuration access

### Professional Version Features (SW-002-PV)

- All features of Lite version plus these debug and test features:
  - ◇ Card Configuration Register support, up to 16 registers, especially useful for multi-function cards
  - ◇ ATA card debug module (supports ATA interface)
  - ◇ Built-in CIS Parcel, with tuple browser to read the CIS
- Built-in command Macro/Interpreter

- ◇ Supports user programmable "Macro" commands to generate system cycles for PCMCIA host/card debug
- ◇ Up to eight user-defined command lines
- ◇ Trace, Normal and Step options
- ◇ Loop control capability
- ◇ Results displayed in monitor window

- Excellent for high-volume testing
- Ideal for Host or PC-Card debug, characterization and evaluation

### Additional Available Products

Mobile Media Research supplies a complete line of hardware and software products for PCMCIA design. Contact MMRI for additional information.

### Xilinx PCMCIA Fax/Modem Macro (SW-XM201)

A Xilinx FPGA-based macro for a PCMCIA fax/modem interface for implementing a complete fax/modem card using an external fax/modem chipset.

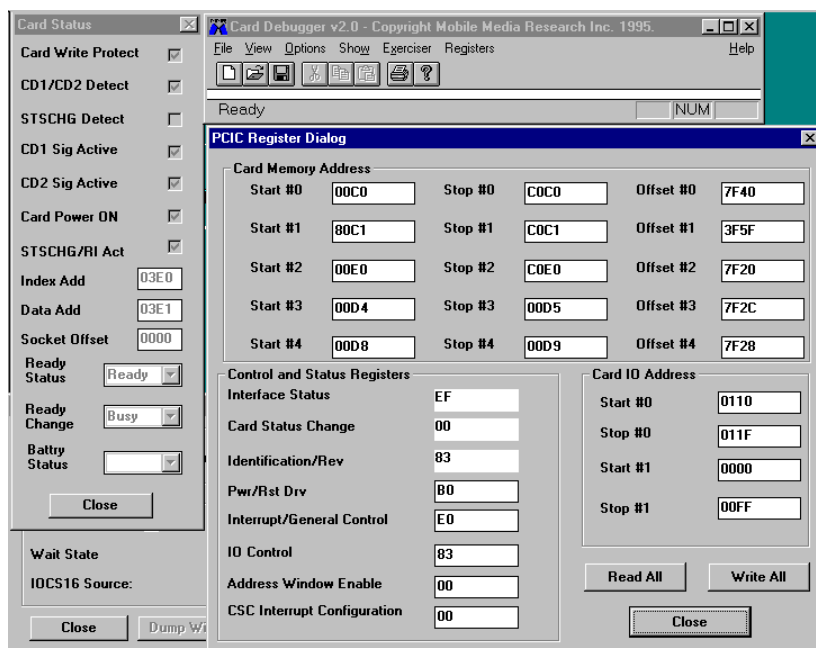


Figure 1. PCMCIA Card Debugger/Exerciser windows.

***Xilinx PCMCIA Library R1.2 (SW-XL200)***

A library of Xilinx FPGA-based PCMCIA interface macros that can be configured for custom backend PC-Card interfaces.

***PCMCIA Prototyping Card (SW-007)***

A Xilinx-based configurable development platform for designing and debugging PC-Cards.

***CIS Generator 1.2 (SW-006-2)***

This is a feature-rich, Windows-based compiler that automates the generation of a PCMCIA-compatible Card Information Structure.

**Ordering Information**

To purchase or make further inquiries about this or other MMRI products, contact Mobile Media directly:

Mobile Media Research, Inc.  
3550 Mowry Ave., Suite 101  
Fremont, CA 94538 USA  
Phone: 800-799-MMRI (6674)  
510-795-2212  
Fax: 510-795-2219  
E-mail: sales@mobmedres.com

URL: [www.mobmedres.com](http://www.mobmedres.com)

**Related Documentation and Information**

***Xilinx Programmable Logic***

For information on Xilinx programmable logic or development system software, contact your local Xilinx sales office, or:

Xilinx, Inc.  
2100 Logic Drive  
San Jose, CA 95124  
Phone: 408-559-7778  
Fax: 408-559-7114  
URL: [www.xilinx.com](http://www.xilinx.com)

For general Xilinx literature, contact:

Phone: 800-231-3386 (inside the US)  
408-879-5017 (outside the US)  
E-mail: [literature@xilinx.com](mailto:literature@xilinx.com)

For AllianceCORE™ specific information, contact:

Phone: 408-879-5381  
E-mail: [logicore@xilinx.com](mailto:logicore@xilinx.com)  
URL: [www.xilinx.com/products/logicore/logicore.htm](http://www.xilinx.com/products/logicore/logicore.htm)



**MOBILE MEDIA RESEARCH**



**The Programmable Logic Company<sup>SM</sup>**