

PPG-J and PPG-S Potentiometer Digitizer Kit Instructions

The Potentiometer Digitizer is a circuit which converts the position of two potentiometers into binary data that can be fed to, and interpreted by a microcomputer. The potentiometers may be conventional circular movement potentiometers, slide controls or potentiometers attached to a joystick. The digitizer's circuitry alternately converts each potentiometer's resistance into a seven bit binary count that is fed to your microcomputer thru the input side of a standard eight bit parallel interface. An updated value of each potentiometer's position is generated by the circuitry approximately fifty times a second. The eighth bit generated by the digitizer tells the computer which potentiometer's data is being presented. A "DATA READY" strobe and its compliment are generated by the circuitry making the board usable in either polling or interrupt driven computer systems.

This product as with all other Southwest Technical Products Corp. peripherals was designed to be as universal and as software independent as possible. All of the counting, timing and latching is done by hardware on the circuit board rather than software in the computer system. This not only makes the digitizer easier to use but saves computer time in an application where the computer needs all the time it can get just to update the graphics display. Interfacing can often be done thru the input side of the same interface that feeds the graphic terminal. If the graphic terminal is interfaced thru an eight bit parallel interface as is the SWTPC GT-61. Some applications will require the use of both the joystick and linear controls. In this case it will be necessary to use two separate digitizers with separate interfaces.

The entire unit is constructed on a 3" x 8" single sided circuit board. Since the voltage requirements for the board are a mere +12 to 18 VDC @ 20 ma., power for the board may be drawn from the computer system to which it is interfaced.

Circuit Board Assembly

Note: When assembling this kit, it is best that none of the components be soldered until all of the components of each group have been installed on the circuit board. This makes it much easier to interchange components if a mistake is made during assembly. Be sure to use a low wattage iron (not a gun) with a small tip. Do not use acid core solder or any type of paste flux. We will not guarantee or repair any kit on which either product has been used. Use only the solder supplied with the kit or a 60/40 alloy resin core equivalent.

- () Clean the copper side of the printed circuit board with Scotchbrite^R to remove the oxidation if there are any tarnished areas on the board.
- () Install all fifteen of the jumpers on the circuit board. Solder.
- () Install all of the resistors on the board excluding resistors R16 and R17. If you will be using the digitizer with the GT-61 Graphic Terminal, you may wish to use a different value of resistor for R6. See the "Inputting Data into your Computer" section of this instruction set. Solder.

- () Install all of the capacitors on the circuit board. Be sure to orient electrolytic capacitor C10 to match with the outline shown in the component layout drawing. Solder.
- () Install all of the diodes and transistors on the circuit board. Here again be sure to orient these components to match with the component layout drawing. Solder.

Note: MOS integrated circuits are susceptible to damage by static electricity. Although some degree of protection is provided internally within the integrated circuits, their cost demands the utmost in care. Before opening and/or installing any MOS integrated circuits you should ground your body and all metallic tools coming into contact with the leads, thru a 1 M ohm 1/4 watt resistor (supplied with the kit). The ground must be an "earth" ground such as a water pipe, and not the circuit board ground. As for the connection to your body, attach a clip lead to your watch or metal ID bracelet. Make absolutely sure you have the 1 Meg ohm resistor connected between you and the "earth" ground, otherwise you will be creating a dangerous shock hazard. Avoid touching the leads of the integrated circuits any more than necessary when installing them, even if you are grounded. On those MOS IC's being soldered in place; the tip of the soldering iron should be grounded as well (separately from your body ground) either with or without a 1 Meg ohm resistor. Most soldering irons having a three prong line cord plug already have a grounded tip. Static electricity should be an important consideration in cold, dry environments. It is less of a problem when it is warm and humid.

- () Install the integrated circuits on the circuit board. Integrated circuits IC1 thru IC3 are not MOS but IC4 thru IC7 are and should be installed as directed in the note above. Be sure to orient the IC's as shown in the component layout drawing. Solder.
- () Attach the fifteen pin female Molex connector to the edge of the circuit board. Solder.
- () Insert the small nylon indexing plug into the female connector pin marked with a small triangle on the bottom side of the board.
- () If you are building the joystick version of the digitizer, cut the four mounting tabs on the frame of the joystick using a pair of heavy duty wire cutters.
- () Depending upon which version of the digitizer you have, attach either the joystick or the slide controls to the R16 and R17 positions on the circuit board. Solder.
- () Carefully check the board over to be sure that all components have been installed correctly and that all connections have been soldered. This completes the PC board assembly.

How It Works

The joystick or potentiometer is wired as a voltage divider with its output going to an integrated, voltage to frequency converter. The voltage to frequency to converter (VFC for short) does just as its name implies. It generates a pulse output whose frequency is dependent upon the input voltage.

The relationship is linear so that no voltage in gives zero frequency out, maximum voltage in gives F_m frequency out and half voltage in gives $F_m/2$ frequency out. A separate VFC, IC1 and IC2, is provided for each potentiometer. A two input multiplexer alternately gates the output of either one or the other converter into seven bit counter, IC7. A separate timebase oscillator, IC3, constantly oscillates at a frequency of approximately 100 Hz. This oscillator's output is inverted by multiplexer IC5A where it appears as the "NEW DATA" strobe. Upon the negative transition of this strobe, seven bit counter IC7 is reset and starts counting at a rate dependent upon the frequency of the VFC being gated into the counter. Upon the positive transition of the "NEW DATA" strobe, six bit latch IC4 and D flip-flop IC6B latch onto and hold the counter's data until the completion of the next measuring cycle. This same positive transition flips D flip-flop IC6A to let the computer gate in the output of the other VFC and being that it is the V/H output lets the computer know which VFC data is being presented at its outputs. A logical one at the V/H output means the vertical or IC2 data is being presented while a logical zero at the output means that horizontal or IC1 data is being presented. Of course the vertical/horizontal terminology depends on the orientation of the circuit board so in this case vertical is defined to be in the same axis as the length of the board while horizontal is in the same axis as the width of the board. Power for the board is provided by two integrated on board regulators. One provides the 5 VDC required by the CMOS IC's while the other provides the +8 VDC power required by the two VFC's.

Attaching the Unit to your System

All connections to the board are made thru a fifteen pin connector along the edge of the circuit board. A minimum, twelve wire multiconductor or flat ribbon cable (not supplied with the kit) is recommended for connecting the board to the computer's parallel interface. The drivers on the digitizer are CMOS for simplicity and low power consumption and thus require that you keep your interconnecting cable as short as possible. Do not try to drive a load greater than one standard TTL load with any of the data or data ready outputs. A chassis has not been provided for the digitizer since some users will wish to have more than one board mounted in the same enclosure.

Inputting Data into your Computer

New data is latched into the data holding registers IC4 and IC6B every time the "NEW DATA" line goes high and the "NEW DATA" line goes low. If you try to simultaneously latch this data into your computer's interface latches, you may have problems because the "NEW DATA" strobe gets to the interface before the new data does. This problem can best be solved by clocking data into your computer's interface on the falling edge of the "NEW DATA" strobe. If your interface will respond to rising edges only, then use the "NEW DATA" output. If you try to use the full seven bits that are output by the unit, you will not get valid data if the count is so high that it overflows and starts the counter over again. To avoid this problem, it is best to just use six of the seven available data bits and use the seventh bit to check for overflow. Having six bits will give you a maximum count of 111111_2 or 40_{16} which is more than enough resolution. When inputting data, you should first look at bit seven, the overflow bit, and if set, define the data as 40_{16} in your program.

This gives the unit 64_{10} vertical and 64_{10} horizontal data positions which is more than enough resolution for most applications.

If you are using the unit with the SWTPC GT-61 Graphic Terminal, you will find it advantageous to make the unit's vertical count a maximum of 96_{10} or 60_{16} rather than 40_{16} to match the vertical count of the GT-61 Graphic Terminal. This may be done by changing resistor R6 from a 6.8K ohm 1/4 watt resistor to a 4.7K ohm 1/4 watt resistor. You will then have to look at the full seven bits of data in your program and define the output as being 60_{16} if the count output is greater than 60_{16} .

Testing and Calibration

To calibrate the unit you will need to write a program to continually read and display the data outputs of the digitizer. You should then set the joystick control or potentiometers for maximum count and adjust potentiometers R14 and R15 for the maximum numerical count that you desire from the board. You will see a maximum one digit fluctuation in the count being displayed. This is normal and if it creates a problem in your particular application, it can be taken care of in software. A sample program for the SWTPC 6800 Computer System is listed and may be used for reference if you will be using the digitizer with a computer other than a SWTPC 6800.

Parts List - PPG Potentiometer Digitizer Kit

Resistors

___	R1	10K ohm 1/4 watt resistor
___	R2	100K ohm 1/4 watt resistor
___	R3	6.8K ohm 1/4 watt resistor
___	R4	10K ohm 1/4 watt resistor
___	R5	100K ohm 1/4 watt resistor
___	R6	6.8K ohm or 4.7K ohm 1/4 watt resistor (see instructions)
___	R7	4.7K ohm 1/4 watt resistor
___	R8	150K ohm 1/4 watt 1% resistor
___	R9	4.7K ohm 1/4 watt resistor
___	R10	4.7K ohm 1/4 watt resistor
___	R11	47K ohm 1/4 watt resistor
___	R12	2.2K ohm 1/4 watt resistor
___	R13	2.2K ohm 1/4 watt resistor
___	R14	5K ohm precision trimmer resistor
___	R15	5K ohm precision trimmer resistor
___	R16	10K ohm potentiometer on joystick or slide potentiometer
___	R17	10K ohm potentiometer on joystick or slide potentiometer
___	R18	2.2K ohm 1/4 watt resistor

Capacitors

___	C1	1000 pfd film capacitor
___	C2	0.01 mfd film capacitor
___	C3	0.022 mfd film capacitor
___	C4	1000 pfd film capacitor
___	C5	0.01 mfd film capacitor
___	C6	0.022 mfd film capacitor
___	C7	0.1 mfd film capacitor
___	C8	0.1 mfd disk capacitor
___	C9	1000 pfd film capacitor
___	C10*	33 mfd @ 25 VDC electrolytic capacitor

Note: All components flagged with a * must be oriented as shown in the component layout drawing.

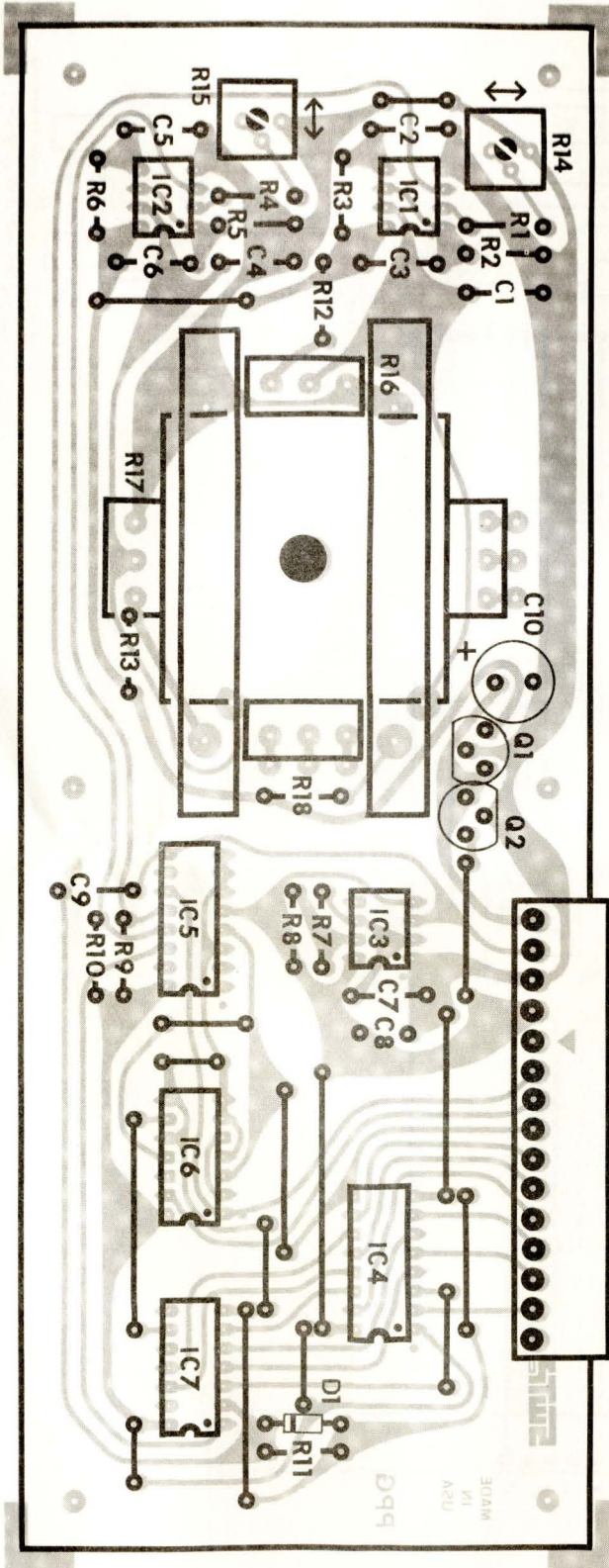
Diodes and Transistors

___	Q1*	78L08 voltage regulator
___	Q2*	78L05 voltage regulator
___	D1*	1N4148 silicon diode

Integrated Circuits

___	IC1*	4151 voltage to frequency converter (Raytheon)
___	IC2*	4151 voltage to frequency converter (Raytheon)
___	IC3*	555 timer integrated circuit
___	IC4*	4174 or 14174 6 bit latch
___	IC5*	4053 or 14053 triple 2input MUX
___	IC6*	4012B or 14013B dual D flip-flop
___	IC7*	4024 or 14024 7 bit counter

Note: All components flagged with a * must be oriented as shown in the component layout drawing.



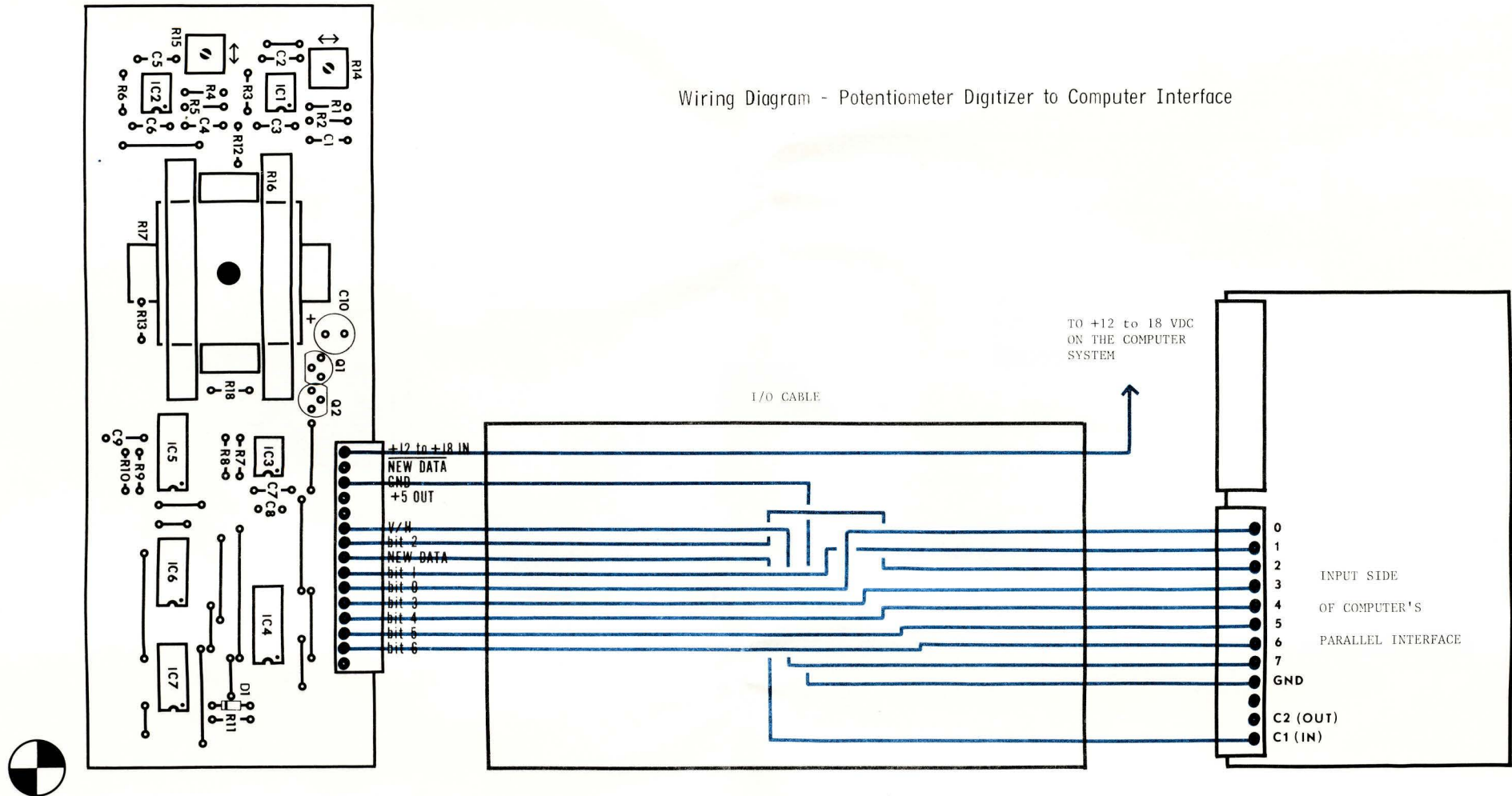
+12 to +18 IN
 NEW DATA
 GND
 +5 OUT

V/H
 bit 2
 NEW DATA
 bit 1
 bit 0
 bit 3
 bit 4
 bit 5
 bit 6

MADE
 IN
 USA
 999



Wiring Diagram - Potentiometer Digitizer to Computer Interface



PPG Potentiometer Digitizer Diagnostic for the SWTPC 6800 Computer System PPGTST-1

This diagnostic is one designed to locate problems in, or calibrate the PPG Potentiometer Digitizer when it is interfaced to a SWTPC 6800 Computer System thru a MP-L Parallel Interface board. It is assumed that before loading this program, the rest of the system is functioning normally with no problems. The program itself uses 128 words of memory and it is meant to be loaded into the computer system's lower 2K memory board. The diagnostic may be loaded either from tape or instruction by instruction using Mikbug^R starting from address 0020₁₆ and going thru address 009F₁₆. The address of the parallel interface to which the digitizer is attached must be loaded into addresses A002 and A003 using Mikbug^R before the program is initiated. The most significant byte goes into A002 while the least significant byte goes into A003. The starting addresses of the various interface ports are given below:

<u>Port</u>	<u>Address in Hex</u>
I/O #0	8000
I/O #1	8004 (reserved for control interface)
I/O #2	8008
I/O #3	800C
I/O #4	8010
I/O #5	8014
I/O #6	8018
I/O #7	801C

The program counter addresses, A048 and A049, must also be set to 0020 before the program is initiated. The program may then be started as described in the "Go to User's Program" section of the Engineering Note 100 in the Operating System section of your yellow notebook. Once initiated, the program may be stopped only by depressing the "RESET" button. The program may then be restarted after resetting the program counter addresses to 0020₁₆ and retyping a G for "Go to User Program".

The diagnostic reads the horizontal and vertical data being output by the digitizer and displays the data in hexadecimal form on the control terminal's display. The data is output in column form with the horizontal data first followed by the vertical data. The data is continually read and displayed for calibration and test purposes. As the digitizer control(s) are moved the data should change accordingly. The unit may be calibrated by setting the control(s) for maximum count and adjusting potentiometers R14 and R15 for the desired maximum numerical count which will usually be 40₁₆ unless you are using the SWTPC GT-61 Graphic Terminal where you will want to make a resistor change on the digitizer as called for in its assembly instructions and set potentiometer R15 for a maximum count of 60₁₆ instead of 40₁₆.

Don't forget when using the digitizer that it must get its power from the computer system to which it is interfaced, otherwise you won't get any data out of the unit. You can derive power from the SWTPC 6800 Computer System from the +12 buss available at the lower connector edge of the MP-L Parallel Interface board to which it is attached.

Never install or remove the interface board when the system is powered up. Doing so is not only hazardous to the equipment, but bypasses the normal power-up sequence required by the internal registers within the 6820 integrated circuit in order to guarantee proper operation. Also be careful when attaching the computer's +12 volt supply to the digitizer board since the +12 volt buss is not fused.

				NAM	PPGTST-1
00010				OPT	0
00020				OPT	S
00030				ORG	\$0020
00040	0020			LIX	#CLRSCN
00050	0020	CE	0085	JSR	FDATA1
00060	0023	BD	E07E	LDA A	##3D
00070	0026	86	3D	LDX	PARADR
00080	0028	FE	A002	LDA B	##00
00090	002B	C6	00	STA B	2, X
00100	002D	E7	02	STA A	3, X
00110	002F	A7	03	LDA A	3, X
00120	0031	A6	03	AND A	##80
00130	0033	84	80	BEQ	LOOP1
00140	0035	27	FA	LDA A	2, X
00150	0037	A6	02	TAB	
00160	0039	16		AND A	##80
00170	003A	84	80	BNE	LOOP1
00180	003C	26	F3	AND B	##7F
00190	003E	C4	7F	STA B	LOPOS
00200	0040	F7	0083	LDA A	3, X
00210	0043	A6	03	AND A	##80
00220	0045	84	80	BEQ	LOOP2
00230	0047	27	FA	LDA A	2, X
00240	0049	A6	02	TAB	
00250	004B	16		AND A	##80
00260	004C	84	80	BNE	SKIP1
00270	004E	26	08	LDX	ERRSTR
00280	0050	FE	0091	JSR	FDATA1
00290	0053	BD	E07E	BRA	LOOP1
00300	0056	20	D9	AND B	##7F
00310	0058	C4	7F	STA B	HIPOS
00320	005A	F7	0084	LDA A	LOPOS
00330	005D	B6	0083	JSR	OUTHL
00400	0060	BD	E067	LDA A	LOPOS
00410	0063	B6	0083	JSR	OUTHR
00420	0066	BD	E06B	JSR	OUTS
00430	0069	BD	E0CC	LDA A	HIPOS
00440	006C	B6	0084	JSR	OUTHL
00510	006F	BD	E067	LDA A	HIPOS
00520	0072	B6	0084	JSR	OUTHR
00530	0075	BD	E06B	JSR	OUTS
00540	0078	CE	008B	LDX	#CRLF
00550	007B	BD	E07E	JSR	FDATA1
00560	007E	FE	A002	LDX	PARADR
00570	0081	20	AE	BRA	LOOP1
00580	0083	00	LOPOS	FCB	\$00
00590	0084	00	HIPOS	FCB	\$00
00600	0085	0D	CLRSCN	FCB	\$0D, \$0A, \$10, \$16, \$00, \$04
	0086	0A			
	0087	10			
	0088	16			
	0089	00			
	008A	04			
00610	A002	PARADR	EQU		\$A002

00620	008B 0D	CRLF	FCB	\$0D, \$0A, \$00, \$00, \$00, \$04
	008C 0A			
	008D 00			
	008E 00			
	008F 00			
	0090 04			
00630	0091 53	ERRSTR	FCC	/SEQUENCE ERROR/
	0092 45			
	0093 51			
	0094 55			
	0095 45			
	0096 4E			
	0097 43			
	0098 45			
	0099 20			
	009A 45			
	009B 52			
	009C 52			
	009D 4F			
	009E 52			
00640	009F 04		FCB	\$04
00670	A048		ORG	\$A048
00680	A048 0020		FDB	\$20
00690	A002		ORG	\$A002
00700	A002 801C		FDB	\$801C
00710	E07E	PDATA1	EQU	\$E07E
00720	E067	OUTH1	EQU	\$E067
00730	E06B	OUTH1	EQU	\$E06B
00740	E0CC	OUTS	EQU	\$E0CC
00750			END	
START	0026			
LOOP1	0031			
LOOP2	0043			
SKIP1	0058			
SKIP2	0060			
SKIP3	0069			
SKIP4	006F			
SKIP5	0078			
LOPOS	0083			
HIP0S	0084			
CLRSCN	0085			
PARADR	A002			
CRLF	008B			
ERRSTR	0091			
PDATA1	E07E			
OUTH1	E067			
OUTH1	E06B			
OUTS	E0CC			

TOTAL ERRORS 00000

CT-64 TERMINAL SYSTEM



- * 64 OR 32 CHARACTERS PER LINE
- * UPPER AND lower case LETTERS
- * FULL 8 BIT MEMORY
- * 128 CHARACTER ASCII SET
- * 110/220 Volt 50-60 Hz POWER SUPPLY
- * SCROLLING OR PAGE MODE OPERATION
- * CONTROL CHARACTER DECODING—32 COMBINATION
- * PRINTS CONTROL CHARACTERS
- * USABLE WITH ANY 8 BIT ASCII COMPUTER
- * REVERSED BACKGROUND — **HIGHLIGHTING**

COMPLETE WITH — Chassis and cover, cursor control, 110-1200 Baud serial interface and keyboard. Optional monitor show in photo available.

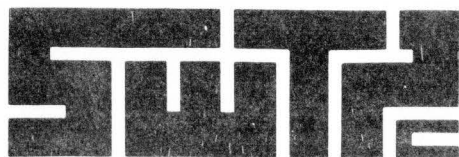
Now you can buy it. The terminal that has all the features that people have been asking us to include. The CT-64 has all the functions that you could want in a terminal and they may be operated by either switches, or through a software program.

All cursor movements, home-up and erase, erase to end of line, erase to end of frame, read on, read off, cursor on, cursor off, screen reversal, scroll, no scroll, solid cursor, blinking cursor, page selection and a beeper to warn you of end of page; all are provided for your use in the CT-64.

You may also switch from upper case only teletype style operation to upper-lower case typewriter style operation. You can reverse the field on individual words to highlight them, or you can reverse the whole screen.

CT-64 is complete with keyboard, power supply serial interface and case. A matching 9 inch monitor with coordinated covers is also available to make a complete system.

CT-64 Terminal Kit	\$325.00
MM-1 Monitor (assembled)	\$175.00



219 W. Rhapsody

San Antonio, Texas 78216

You are right, it's just what I have been asking for.

- Enclose is \$325.00 for the CT-64
- Send the MM-1 monitor too. Send Data
- or BAC _____ # _____
- or MC _____ Ex Date _____

NAME _____

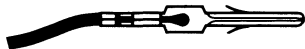
ADDRESS _____

CITY _____ STATE _____ ZIP _____

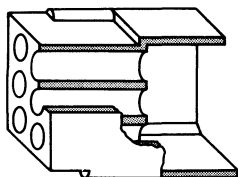
Southwest Technical Products Corp.
219 W. Rhapsody, San Antonio, Texas 78216

Connector Reference Sheet

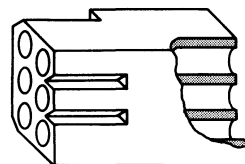
In order to avoid confusion in distinguishing between the various connectors supplied with our many kits, we are including this connector reference sheet with the kit instruction set. We have had a great many customers interchange the male and female connector shells when assembling their kits so we have clearly illustrated each connector along with its proper name and gender on this reference sheet. All are shown actual size.



Male Pin



Molex Female Shell Connector



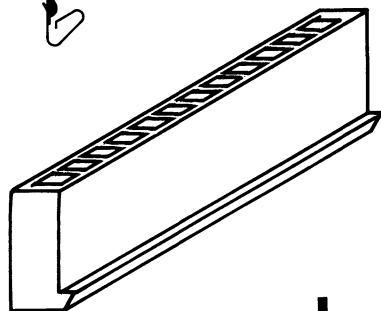
Molex Male Shell Connector



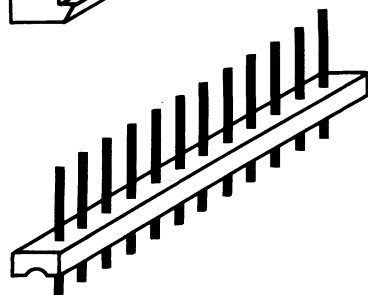
Female Pin



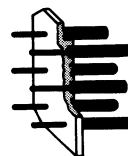
Pin for Harness Connector



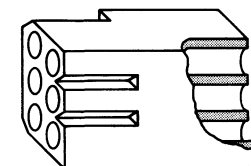
Harness Connector



Straight Pin Edge Connector



Molex Wafercon®



Molex Male Shell Connector



Male Solder Tail Pin
PC Type



Female Solder Tail Pin
PC Type